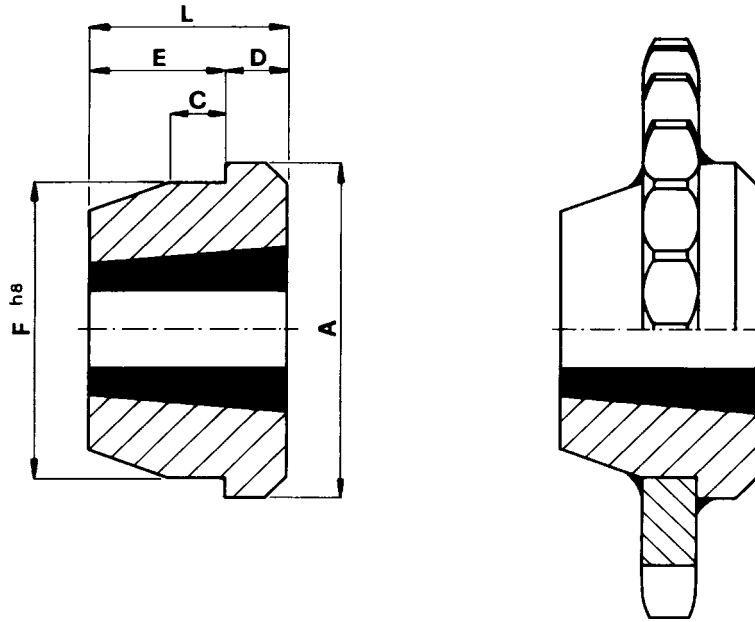


# Weld-on-Hub "European" Metric Taper-Bushings



Part No.	Bushing*	Outside Dia.					Seat Dia. Ø F <sup>h8</sup>
		Ø A	L	C	D	E	
WHTL.1210	1210	70	25	10	9	16	60
WHTL.1610	1610	83	25	10	9	16	70
WHTL.1615	1615	83	38	11	16	22	70
WHTL.2012	2012	95	32	12	12	20	90
WHTL.2517BSW	2517 BSW	127	44	13	19	25	110
WHTL.3020	3020	152	50	15	20	30	130
WHTL.3030	3030	152	76	19	25	51	130
WHTL.3535BSW	3535 BSW	184	87	25	32	57	155
WHTL.4040	4040	225	102	32	32	70	195
WHTL.4545BSW	4545 BSW	254	114	38	38	76	220
WHTL.5050	5050	276	127	38	38	89	242

\*Bushing types 2517, 2525, 3535 and 4545 are made to "European" specifications, with 1/2" x 12tpi BSW set screws. BSW (British Whitworth) threads are completely interchangeable with ANSI (American Standard Unified) except in the case of 1/2".