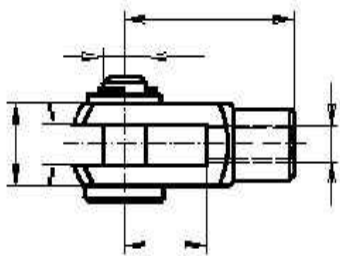


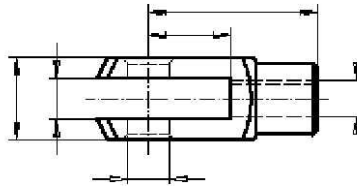
# Fork Joint

With Carter Pin (FJ)  
DIN 71751



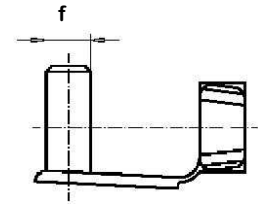
# Clevis

(C)  
DIN 71752



# ES Pins

(ES)  
Norm 01



Part Number			Size	a	b	c	d	e	f	Weight g		
FJ	C	ES								FJ	C	ES
FJ4x8R	C4x8R	ES4x8	4 x 8	8	4	8	16	M 4	4	6	5	1.5
FJ4x16R	C4x16R		4 x 16	8	4	16	24	M 4	4	8	7	
FJ5x10R	C5x10R	ES5x10	5 x 10	10	5	10	20	M 5	5	10	9	2.7
FJ5x20R	C5x20R	ES5x20	5 x 20	10	5	20	30	M 5	5	14	13	2.9
FJ6x12R	C6x12R	ES6x12	6 x 12	12	6	12	24	M 6	6	16	15	4.6
FJ6x24R	C6x24R	ES6x24	6 x 24	12	6	24	36	M 6	6	23	22	5.0
FJ8x16R	C8x16R	ES8x16	8 x 16	16	8	16	32	M 8	8	38	37	10.4
FJ8x32R	C8x32R	ES8x32	8 x 32	16	8	32	48	M 8	8	55	54	11.5
FJ10x20R	C10x20R	ES10x20	10 x 20	20	10	20	40	M 10	10	80	74	19.0
FJ10x40R	C10x40R	ES10x40	10 x 40	20	10	40	60	M 10	10	120	116	20.3
FJ12x24R	C12x24R	ES12x24	12 x 24	24	12	24	48	M 12	12	125	121	33.5
FJ12x48R	C12x48R	ES12x48	12 x 48	27	12	48	72	M 12	12	180	175	34.5
FJ14x28R	C14x28R	ES14x28	14 x 28	27	14	28	56	M 14	14	190	178	45.0
FJ14x56R	C14x56R	ES14x56	14 x 56	27	14	56	85	M 14	14	265	258	50.0
FJx16x32R	C16x32R	ES16x32	16 x 32	32	16	32	64	M 16	16	300	282	70.0
FJ16x64R	C16x64R	ES16x64	16 x 64	32	16	64	96	M 16	16	430	410	71.5

Stainless Steel and Left Hand Threads shown below

Ordering examples:

FJ10x40R = Fork Joint, Size 10 x 40, Right Hand Threads

FJ10x40L = Fork Joint, Size 10 x 40, Left Hand Threads

FJ10x40R SS = Fork Joint, Size 10 x 40, Right Hand Threads, Stainless Steel

C8x16R = Clevis, Size 8 x 16, Right Hand Threads

C8x16L = Clevis, Size 8 x 16, Left Hand Threads

C8x16R SS = Clevis, Size 8 x 16, Right Hand Threads, Stainless Steel

ES14x56 = ES Pin, Size 14 x 56,



American Metric® Corporation