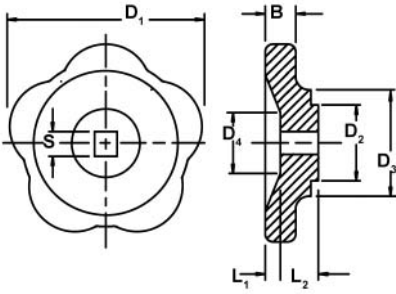


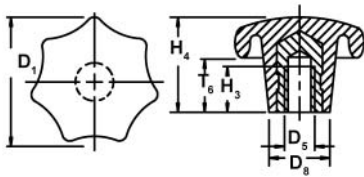
# Machine Handles

## HAND WHEEL (DIN 388) HARD PLASTIC



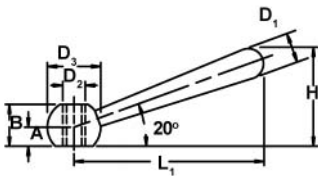
PART NO.	D <sub>1</sub>	S (H11)	B	D <sub>2</sub>	D <sub>3</sub>	D <sub>4</sub>	L <sub>1</sub>	L <sub>2</sub>
HW 6	50	6	10	22	30	22	12	6
HW 7	63	7	11	22	34	24	12	8
HW 8	80	8	12	28	38	28	14	8
HW 9	100	9	14	28	42	30	14	11
HW 10	125	10	16	34	48	32	16	12

## STAR KNOB (DIN 6336) HARD PLASTIC WITH STEEL INSERT



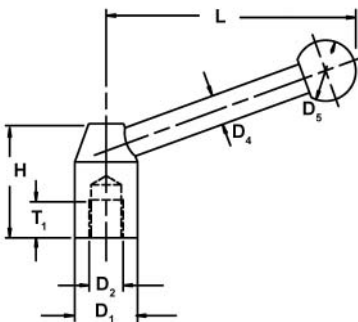
PART NO.	D <sub>1</sub>	D <sub>5</sub>	D <sub>6</sub>	H <sub>3</sub>	H <sub>4</sub>	T <sub>6</sub>
HSK M4	20	M 4	10	7	13	7.5
HSK M5	25	M 5	12	8	16	9.5
HSK M6	32	M 6	14	10	20	12
HSK M8	40	M 8	18	13	25	14
HSK M10X50	50	M 10	22	17	32	18
HSK M10X63	63	M 10	26	21	40	22
HSK M12X63	63	M 12	26	21	40	22
HSK M12X80	80	M 12	35	25	50	30

## CLAMPING LEVER (DIN 99) STEEL



PART NO.	D <sub>1</sub>	D <sub>2</sub>	D <sub>3</sub>	L <sub>1</sub>	H	A	B
HCL M5	6	M 5	10	38	19	3	7.5
HCL M6	8	M 6	12	48	24	4	9.5
HCL M8	10	M 8	16	60	30.5	5	12.5
HCL M10	13	M 10	20	76	38	6	15
HCL M12	16	M 12	25	95	47	7.5	19
HCL M16	20	M 16	32	119	59.5	10	25
HCL M20	25	M 20	40	152	75.7	12.5	31
HCL M24	32	M 24	50	190	97	18	41

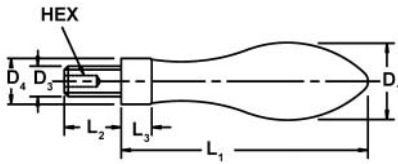
## OPERATING LEVER, STEEL



PART NO.	D <sub>1</sub>	D <sub>2</sub>	D <sub>4</sub>	D <sub>5</sub>	H	L	T <sub>1</sub>
HOL M8	20	M 8	8	20	33	70	15
HOL M10	22	M 10	8	20	37	82	15
HOL M12X25	25	M 12	10	25	42	96	18
HOL M12X28	28	M 12	12	30	47	110	18
HOL M16X32	32	M 16	12	32	52	124	23
HOL M16X36	36	M 16	14	35	58	138	24
HOL M20X40	40	M 20	16	40	64	152	27
HOL M20X45	45	M 20	16	40	71	170	30

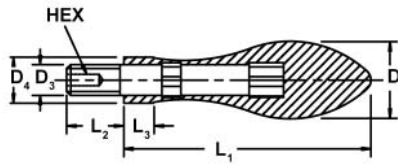
# Machine Handles

## SOLID BALL GRIP (DIN 39) STEEL



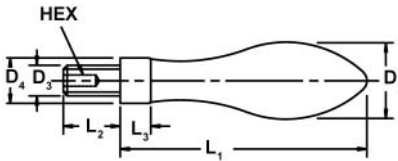
PART NO.	D <sub>1</sub>	D <sub>3</sub>	D <sub>4</sub> (H13)	L <sub>1</sub>	L <sub>2</sub>	L <sub>3</sub>	HEX
HSBG M4 S	10	M 4	7	32	7	4	-
HSBG M5 S	13	M 5	8	40	9	5	-
HSBG M6 S	16	M 6	10	50	11	7	3
HSBG M8 S	20	M 8	13	64	13	8	4
HSBG M10 S	25	M 10	16	80	14	10	5
HSBG M12 S	32	M 12	20	100	21	13	6
HSBG M16 S	36	M 16	22	112	26	14	8

## SOLID BALL GRIP (DIN 39) HARD PLASTIC WITH STEEL INSERT



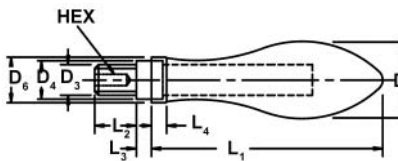
PART NO.	D <sub>1</sub>	D <sub>3</sub>	D <sub>4</sub> (H13)	L <sub>1</sub>	L <sub>2</sub>	L <sub>3</sub>	HEX
HSBG M8 P	20	M 8	13	64	13	8	4
HSBG M10 P	25	M 10	16	80	14	10	5
HSBG M12 P	32	M 12	20	100	21	13	6

## SOLID BALL GRIP (DIN 39) ALUMINUM



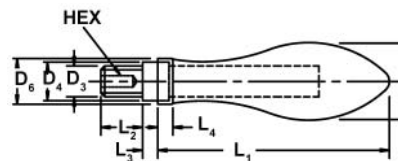
PART NO.	D <sub>1</sub>	D <sub>3</sub>	D <sub>4</sub> (H13)	L <sub>1</sub>	L <sub>2</sub>	L <sub>3</sub>	HEX
HSBG M6 A	16	M 6	10	50	13	7	3
HSBG M8 A	20	M 8	13	64	16	8	4
HSBG M10 A	25	M 10	16	80	20	12	5
HSBG M12 A	32	M 12	20	100	25	16	6
HSBG M16 A	36	M 16	22	112	28	16	8

## ROTATING BALL GRIP (DIN 98) STEEL



PART NO.	D <sub>1</sub>	D <sub>3</sub>	D <sub>4</sub> (H13)	D <sub>6</sub>	L <sub>1</sub>	L <sub>2</sub>	L <sub>3</sub>	L <sub>4</sub>	HEX
HRBG M6 S	16	M 6	10	14	49	11	5.5	5	3
HRBG M8 S	20	M 8	13	18	61	13	6	6	4
HRBG M10 S	25	M 10	16	21	75	14	8	6.5	5
HRBG M12 S	32	M 12	20	26	95	21	10.5	8	6
HRBG M16 S	36	M 16	22	29	106	26	11	9	8

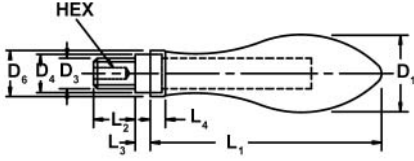
## ROTATING BALL GRIP (DIN 98) HARD PLASTIC \ STEEL INSERT



PART NO.	D <sub>1</sub>	D <sub>3</sub>	D <sub>4</sub> (H13)	D <sub>6</sub>	L <sub>1</sub>	L <sub>2</sub>	L <sub>3</sub>	L <sub>4</sub>	HEX
HRBG M6 P	16	M 6	10	14	49	11	5.5	5	3
HRBG M8 P	20	M 8	13	18	61	13	6	6	4
HRBG M10 P	25	M 10	16	21	75	14	8	6.5	5
HRBG M12 P	32	M 12	20	26	95	21	10.5	8	6
HRBG M16 P	36	M 16	22	29	106	26	11	9	8

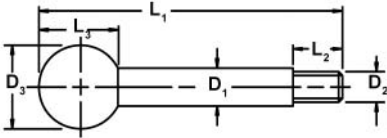
# Machine Handles

## ROTATING BALL GRIP (DIN 98) ALUMINUM



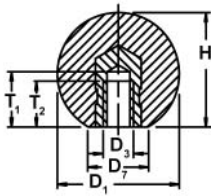
PART NO.	D <sub>1</sub>	D <sub>3</sub>	D <sub>4</sub> (H13)	D <sub>6</sub>	L <sub>1</sub>	L <sub>2</sub>	L <sub>3</sub>	L <sub>4</sub>	HEX
HRBG M6 A	16	M 6	10	14	49	11	5.5	5	3
HRBG M8 A	20	M 8	13	18	61	13	6	6	4
HRBG M10 A	25	M 10	16	21	75	14	8	6.5	5
HRBG M12 A	32	M 12	20	26	95	21	10.5	8	6
HRBG M16 A	36	M 16	22	29	106	26	11	9	8

## BALL LEVER, STEEL WITH HARD PLASTIC KNOB



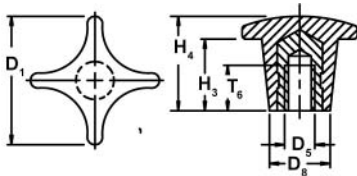
PART NO.	D <sub>1</sub>	D <sub>2</sub>	D <sub>3</sub>	L <sub>1</sub>	L <sub>2</sub>	L <sub>3</sub>
HBL M6	8	M 6	20	89	9	18
HBL M8	10	M 8	25	111	11	22.5
HBL M10	12	M 10	32	139	14	29
HBL M12	14	M 12	35	176	16	32.5

## BALL KNOB (DIN 319) HARD PLASTIC WITH STEEL INSERT



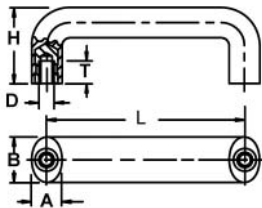
PART NO.	D <sub>1</sub>	D <sub>3</sub>	H	D <sub>7</sub>	T <sub>1</sub>	T <sub>2</sub>
HBK M4	16	M4	15	8	7.2	6
HBK M5	20	M5	18	12	9.1	7.5
HBK M6	25	M 6	22.5	15	11	9
HBK M8	32	M 8	29	18	14.5	12
HBK M10	40	M 10	37	22	18	15
HBK M12	50	M 12	46	27	21	18

## CROSS KNOB (DIN 6335) HARD PLASTIC WITH STEEL INSERT



PART NO.	D <sub>1</sub>	D <sub>5</sub>	D <sub>8</sub>	H <sub>3</sub>	H <sub>4</sub>	T <sub>6</sub>
HCK M4	20	M4	10	6	13	7.5
HCK M5	25	M5	12	8	16	9.5
HCK M6	32	M 6	14	10	20	12
HCK M8	40	M 8	18	13	25	14
HCK M10	50	M 10	22	20	32	18
HCK M12	63	M 12	26	25	40	22
HCK M16	80	M 16	35	30	50	30

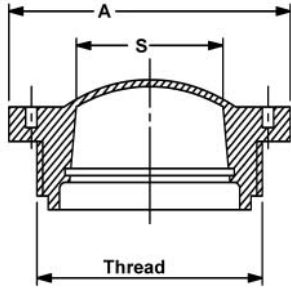
## BAR HANDLE, HARD PLASTIC WITH STEEL INSERT



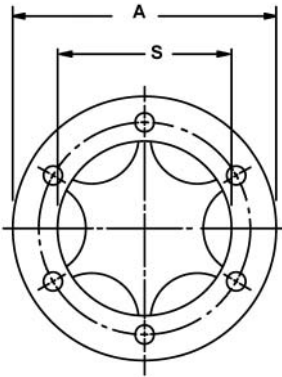
PART NO.	L ± 0.5	A	B	D	H	T
HBH M6	86	17	26	M 6	43	12
HBH M8X117	117	20	30	M 8	54	13
HBH M8X179	179	20	30	M 8	62	13

# Oil Sight Glasses

## OIL LEVEL SIGHT PLUG TYPE SKE PLASTIC

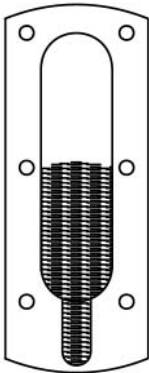


PART NO.	THREAD	A	S
SKE M12	M 12 x 1.0	20 mm	6 mm
SKE M16	M 16 x 1.5	24 mm	9 mm
SKE M20	M 20 x 1.5	28 mm	12 mm
SKE M24	M 24 x 1.5	35 mm	16 mm
SKE M26	M 26 x 1.5	35 mm	16 mm
SKE M27	M 27 x 1.5	35 mm	16 mm
SKE M30	M 30 x 1.5	37 mm	20 mm
SKE M33	M 33 x 1.5	40 mm	22 mm
SKE M35	M 35 x 1.5	45 mm	25 mm
SKE M42	M 42 x 1.5	50 mm	28 mm
SKE M48	M 48 x 1.5	63 mm	33 mm
SKE M60	M 60 x 2.0	70 mm	43 mm



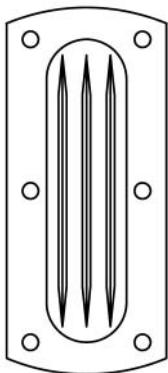
## OIL LEVEL SIGHT PLUG TYPE SKA PLASTIC

PART NO.	A	S	HOLES
SKA 48	48 mm	24 mm	4 x Ø 5.0 mm
SKA 70	70 mm	45 mm	6 x Ø 5.0 mm
SKA 98	98 mm	66 mm	6 x Ø 6.5 mm
SKA 128	128 mm	98 mm	6 x Ø 6.5 mm
SKA 170	170 mm	138 mm	6 x Ø 7.0 mm



## OIL LEVEL SIGHT WINDOW TYPE ST PLASTIC

PART NO.	OIL GLASS	OUTSIDE DIM.	HOLES
ST 33.5 x 13	33.5 x 13 mm	61 x 31 mm	4 x Ø 4.2 mm
ST 54 x 13	54 x 13 mm	81 x 31 mm	6 x Ø 4.2 mm
ST 74 x 13	74 x 13 mm	101 x 31 mm	6 x Ø 4.2 mm
ST 99 x 13	99 x 13 mm	127 x 31 mm	6 x Ø 4.2 mm

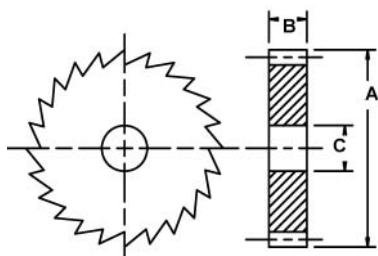


## OIL LEVEL SIGHT WINDOW TYPE SR ALUMINUM WITH PLASTIC SIGHT

PART NO.	OIL GLASS	OUTSIDE DIM.	HOLES
SR 39 x 18	39 x 18 mm	60 x 45 mm	4 x Ø 5.5 mm
SR 59 x 18	59 x 18 mm	80 x 45 mm	4 x Ø 5.5 mm
SR 79 x 18	79 x 18 mm	100 x 45 mm	6 x Ø 5.5 mm
SR 104 x 18	104 x 18 mm	125 x 45 mm	6 x Ø 5.5 mm
SR 139 x 18	139 x 18 mm	160 x 45 mm	8 x Ø 5.5 mm
SR 179 x 18	179 x 18 mm	200 x 45 mm	10 x Ø 5.5 mm
SR 229 x 18	229 x 18 mm	250 x 45 mm	12 x Ø 5.5 mm

# Ratchets And Ratchet Wheels

## STEEL RATCHET WHEELS



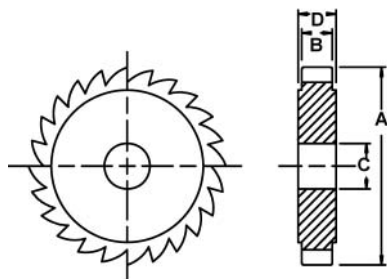
PART NO.	TEETH	PITCH	A	B	C (H7)
RWS 20X4	20	3.14	20	4	6
RWS 30X9	30	3.14	20	9	6
RWS 40X4	40	3.14	40	4	10
RWS 60X4	60	3.14	60	4	15
RWS 80X4	80	3.14	80	4	15
RWS 20X6	20	4.71	30	6	8
RWS 40X6	40	4.71	60	6	12
RWS 60X6	60	4.71	90	6	15
RWS 80X6	80	4.71	120	6	20
RWS 100X6	100	4.71	150	6	20
RWS 120X9	120	4.71	180	9	20
RWS 140X9	140	4.71	210	9	25
RWS 160X9	160	4.71	240	9	25

## STEEL RATCHETS



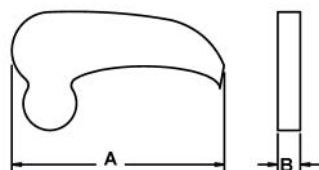
PART NO.	A	B	R
RS 4	49.5	4	9
RS 6	49.5	6	9
RS 9	75	9	13

## CAST IRON RATCHET WHEELS



PART NO.	TEETH	A	B	C	D
RWC 8X10	8	60	10	13	15
RWC 21X18	21	122	18	28	23

## CAST IRON RATCHETS



PART NO.	A	B
RC 10	41	10
RC 16	98	16