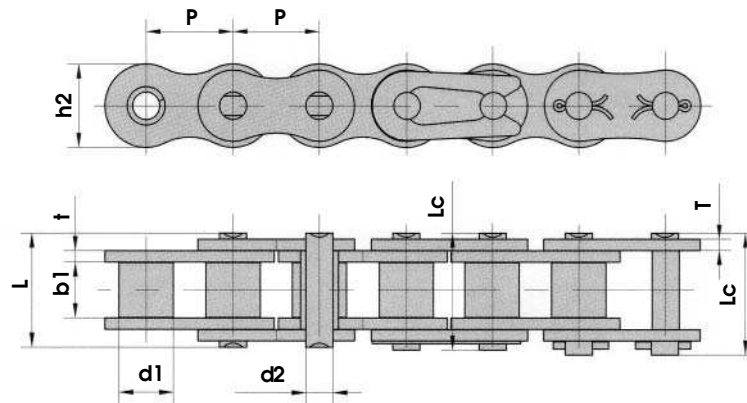


# American Standard (ANSI) Chain Stainless Steel Roller Chains

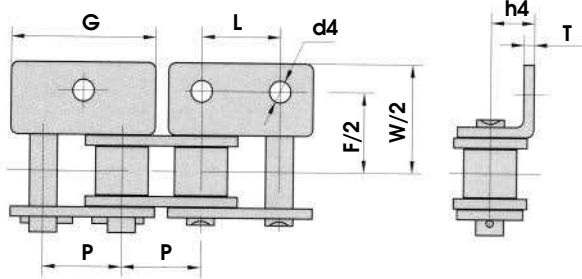


ANSI Chain No.	Pitch P	Roller Diameter d1 max.	Width Between Inner Plates b1 min.	Pin Diameter d2 max.	Pin Length		Inner Plate Depth h2 max	Plate Thickness t/T max	Breaking Load Q kN	Weight Per Ft q lbs / ft
					L max.	Lc max.				
25SS	0.250	0.130	0.125	0.091	0.311	0.331	0.236	0.031	2.5/568	0.07
35SS	0.375	0.200	0.188	0.141	0.488	0.519	0.354	0.051	5.5/1250	0.15
40SS	0.500	0.313	0.309	0.156	0.654	0.701	0.472	0.059	9.6/2182	0.29
41SS	0.500	0.306	0.246	0.141	0.541	0.591	0.390	0.051	6.0/1360	0.21
50SS	0.625	0.400	0.370	0.200	0.815	0.874	0.594	0.080	15.2/3455	0.47
60SS	0.750	0.469	0.495	0.234	1.020	1.091	0.709	0.095	21.7/4932	0.69
80SS	1.000	0.625	0.620	0.312	1.287	1.378	0.945	0.128	38.9/8841	1.19
100SS	1.250	0.750	0.744	0.375	1.591	1.760	1.181	0.157	60.0/13636	1.79
120SS	1.500	0.875	0.993	0.437	1.980	2.138	1.406	0.189	72.5/16477	2.60
140SS	1.750	1.000	0.993	0.500	2.142	2.323	1.614	0.220	94.0/21363	3.49

# American Standard (ANSI) Chain Stainless Steel Conveyor Chain Attachments

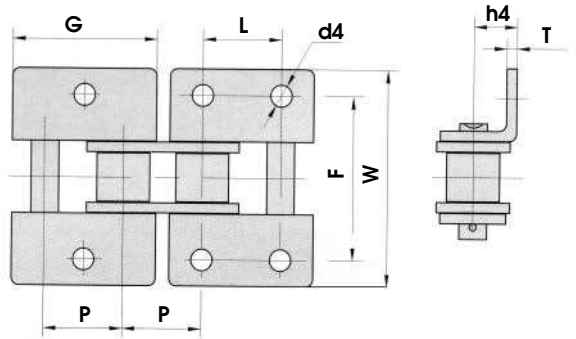
WA-1

WA-2



WK-1

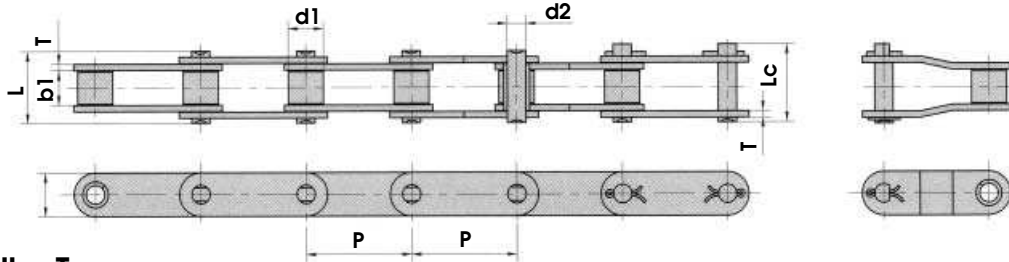
WK-2



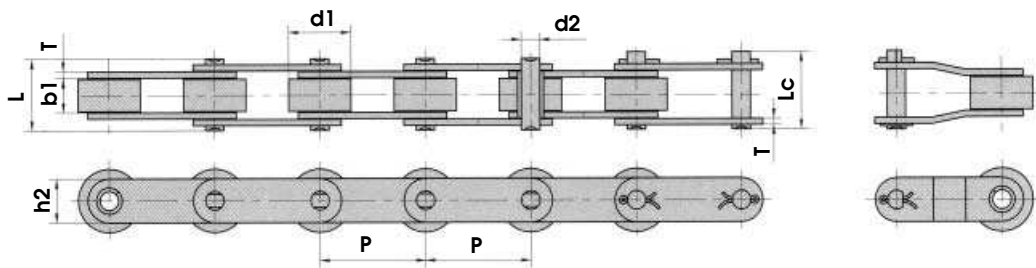
ANSI Chain No.	P	G	L	F	W	T	h4	d4
40SS	0.500	0.906	0.500	1.000	1.402	0.059	0.311	0.134
50SS	0.625	1.134	0.625	1.252	1.843	0.080	0.406	0.217
60SS	0.750	1.364	0.750	1.500	2.220	0.095	0.469	0.217
80SS	1.000	1.807	1.000	2.000	2.882	0.128	0.626	0.268
100SS	1.250	2.270	1.250	2.500	3.535	0.157	0.780	0.362

# American Standard (ANSI) Chain Double Pitch Stainless Steel Roller Chains

## Small Roller Type



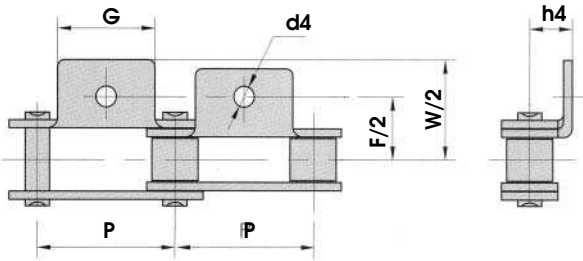
## Large Roller Type



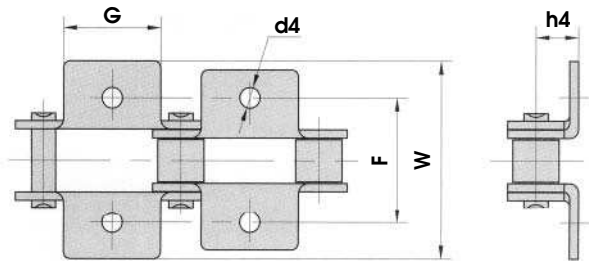
ANSI Chain No.	Pitch P	Roller Diameter d1 max.	Width Between Inner Plates b1 min.	Pin Diameter d2 max.	Pin Length		Inner Plate Depth h2 max	Plate Thickness T max	Breaking Load Q kN	Weight Per Ft q lbs / ft
					L max.	Lc max.				
C2040SS	1.000	0.313	0.309	0.156	0.654	0.701	0.472	0.059	9.6/2182	0.23
C2042SS	1.000	0.625	0.309	0.156	0.654	0.701	0.472	0.059	9.6/2182	0.39
C2040HSS	1.000	0.313	0.309	0.156	0.740	0.783	0.472	0.080	9.6/2182	0.30
C208BSS	1.000	0.335	0.305	0.175	0.657	0.717	0.465	0.063	12.0/2727	0.25
C208BLSS	1.000	0.625	0.305	0.175	0.657	0.717	0.465	0.063	12.0/2727	0.41
C2050SS	1.250	0.400	0.370	0.200	0.815	0.874	0.591	0.080	15.2/3455	0.36
C2052SS	1.250	0.750	0.370	0.200	0.815	0.874	0.591	0.080	15.2/3455	0.59
C2060SS	1.500	0.469	0.495	0.234	1.020	1.091	0.709	0.095	21.7/4932	0.51
C2062SS	1.500	0.875	0.495	0.234	1.020	1.091	0.709	0.095	21.7/4932	0.74
C2060HSS	1.500	0.469	0.495	0.234	1.150	1.244	0.709	0.128	21.7/4932	0.66
C2062HSS	1.500	0.875	0.495	0.234	1.150	1.244	0.709	0.128	21.7/4932	0.95
C2080SS	2.000	0.625	0.620	0.312	1.287	1.437	0.945	0.128	38.9/8841	0.96
C2082SS	2.000	1.125	0.620	0.312	1.287	1.437	0.945	0.128	38.9/8841	1.43
C2080HSS	2.000	0.625	0.620	0.312	1.425	1.551	0.945	0.157	38.9/8841	1.17
C2082HSS	2.000	1.125	0.620	0.312	1.425	1.551	0.945	0.157	38.9/8841	1.65
C2100SS	2.500	0.750	0.744	0.375	1.591	1.760	1.181	0.157	60.0/13636	1.38
C2102SS	2.500	1.562	0.744	0.375	1.591	1.760	1.181	0.157	60.0/13636	2.22
C2100HSS	2.500	0.750	0.744	0.375	1.717	1.846	1.181	0.189	60.0/13636	1.64
C2102HSS	2.500	1.562	0.744	0.375	1.717	1.846	1.181	0.189	60.0/13636	2.47

# American Standard (ANSI) Chain Double Pitch Stainless Steel Conveyor Chain Attachments

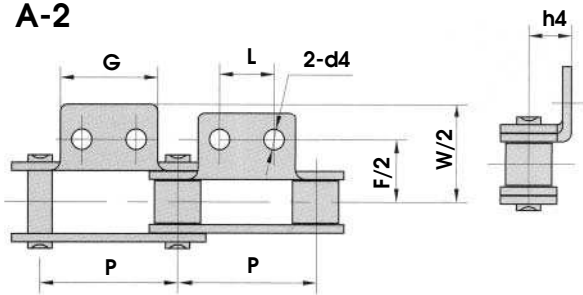
**A-1**



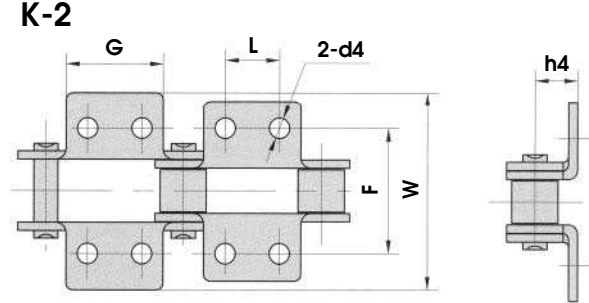
**K-1**



**A-2**

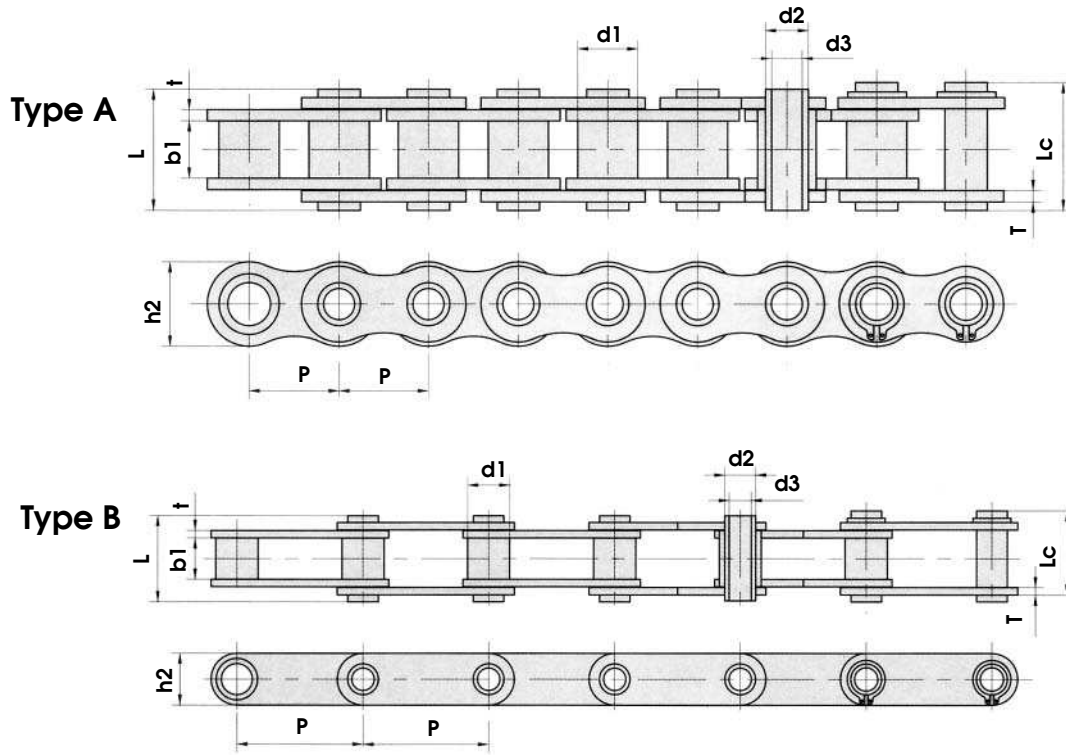


**K-2**



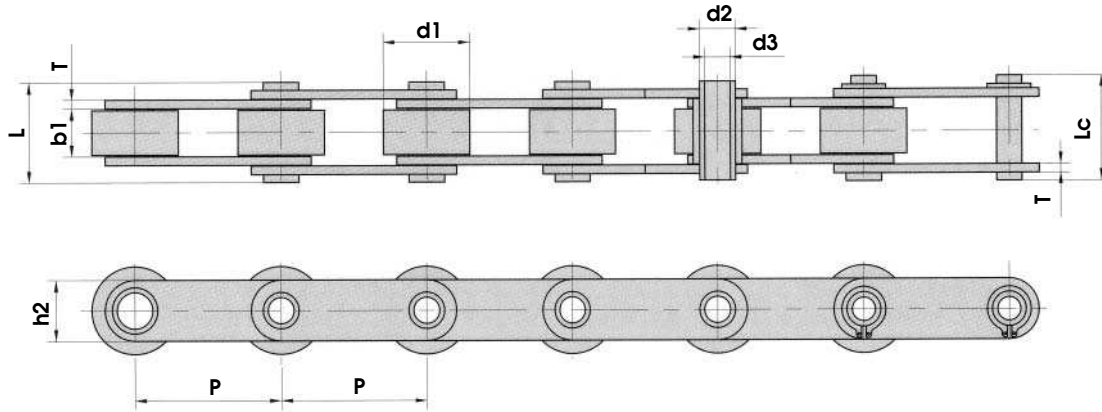
ANSI Chain No.	P	G	L	F	W	h4	d4
C2040SS	1.000	0.752	0.374	1.000	1.559	0.358	0.134
C2042SS	1.000	0.752	0.374	1.000	1.559	0.358	0.134
C208BSS	1.000	0.913	0.500	1.000	1.559	0.358	0.177
C208BLSS	1.000	0.913	0.500	1.000	1.559	0.358	0.177
C2050SS	1.250	0.937	0.469	1.252	1.929	0.437	0.217
C2052SS	1.250	0.937	0.469	1.252	1.929	0.437	0.217
C2060SS	1.500	1.126	0.563	1.689	2.669	0.579	0.217
C2062SS	1.500	1.126	0.563	1.689	2.669	0.579	0.217
C2060HSS	1.500	1.126	0.563	1.689	2.669	0.579	0.217
C2062HSS	1.500	1.126	0.563	1.689	2.669	0.579	0.217
C2080SS	2.000	1.500	0.752	2.189	3.457	0.752	0.268
C2082SS	2.000	1.500	0.752	2.189	3.457	0.752	0.268
C2080HSS	2.000	1.500	0.752	2.189	3.457	0.752	0.268
C2082HSS	2.000	1.500	0.752	2.189	3.457	0.752	0.268
C2100SS	2.500	1.874	0.937	2.622	4.232	0.921	0.362
C2102SS	2.500	1.874	0.937	2.622	4.232	0.921	0.362
C2100HSS	2.500	1.874	0.937	2.598	4.232	0.921	0.362
C2102HSS	2.500	1.874	0.937	2.598	4.232	0.921	0.362

# American Standard (ANSI) Chain Stainless Steel Hollow Pin Chains



ANSI Chain No.	Type	Pitch P	Bush Diameter d1 max.	Width Between Inner Plates b1 min.	Pin Diameter		Pin Length		Inner Plate Depth h2 max	Plate Thick-ness t/T max	Breaking Load Q <sub>0</sub> kN	Weight Per Ft q lbs / ft
					d2 max.	d3 min.	L max.	Lc max.				
80BH9FSS	A	0.500	0.335	0.305	0.258	0.177	0.646	0.693	0.465	0.063/0.051	7.8/1773	0.26
40HPSS	A	0.500	0.313	0.309	0.222	0.157	0.650	0.693	0.472	0.059	7.7/1750	0.25
50HPSS	A	0.625	0.400	0.370	0.277	0.202	0.815	0.862	0.594	0.080	14.0/3182	0.42
60HPSS	A	0.750	0.469	0.500	0.327	0.236	1.016	1.055	0.709	0.095	16.8/3818	0.59
80HPSS	A	1.003	0.625	0.620	0.449	0.317	1.280	1.331	0.945	0.128	35.0/7955	1.04
C2040HPSS	B	1.000	0.313	0.309	0.222	0.157	0.650	0.693	0.472	0.059	7.7/1750	0.21
C2050HPSS	B	1.250	0.400	0.370	0.284	0.202	0.807	0.858	0.591	0.080	14.3/3250	0.35
C2060HPSS	B	1.500	0.469	0.500	0.327	0.236	1.016	1.055	0.669	0.095	16.8/3818	0.47
C2080HPSS	B	2.000	0.625	0.620	0.449	0.317	1.280	1.331	0.945	0.128	35.0/7955	0.83

# American Standard (ANSI) Chain Stainless Steel Hollow Pin Chains



ANSI Chain No.	Pitch P	Roller Diameter d1 max.	Width Between Inner Plates b1 min.	Pin Diameter		Pin Length		Inner Plate Depth h2 max	Plate Thickness T max	Breaking Load Q <sub>0</sub> kN	Weight Per Ft q lbs / ft
				d2 max.	d3 min.	L max.	Lc max.				
C2042HPSS	1.000	0.625	0.309	0.222	0.157	0.650	0.693	0.472	0.059	7.7/1750	0.36
C2052HPSS	1.250	0.750	0.375	0.284	0.202	0.807	0.858	0.591	0.080	14.3/3250	0.58
C2062HPSS	1.500	0.875	0.500	0.327	0.236	1.016	1.055	0.669	0.095	16.8/3818	0.79
C2082HPSS	2.000	1.125	0.620	0.449	0.317	1.276	1.331	0.945	0.128	35.0/7955	1.30
C2042H-HPSS	1.000	0.625	0.309	0.222	0.157	0.740	0.783	0.472	0.080	7.7/1750	0.44
C2052H-HPSS	1.250	0.750	0.375	0.284	0.202	0.870	0.921	0.591	0.095	14.3/3250	0.66
C2062H-HPSS	1.500	0.875	0.500	0.327	0.236	1.150	1.189	0.669	0.128	16.8/3818	0.92
C2082H-HPSS	2.000	1.125	0.620	0.449	0.317	1.425	1.480	0.945	0.157	35.0/7955	1.50