

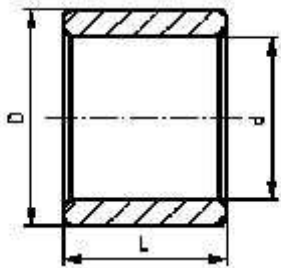
Metric Nylon Sleeve Bearings

Injection molded polyimide 6.6



Part No.	ID d	OD D	L	Wt. g	Part No.	ID d	OD D	L	Wt. g	Part No.	ID d	OD D	L	Wt. g
N8-12x10	8	12	10	1.0	N20-24x15	20	24	15	2.5	N32-36x30	32	36	30	
N8-14x10	8	14	10	2.0	N20-25x15	20	25	15	3.0	N32-40x30	32	40	30	15.5
N10-12x10	10	12	10	0.5	N20-26x20	20	26	20	5.0	N40-45x40	40	45	40	14.5
N10-14x10	10	14	10	1.0	N20-28x20	20	28	20	7.0	N40-48x40	40	48	40	
N10-16x10	10	16	10	1.5	N20-30x20	20	30	20	9.0	N40-50x40	40	50	40	32.0
N12-14x10	12	14	10	0.7	N25-30x20	25	30	20	5.0	N50-58x50	50	56	50	
N12-16x10	12	16	10	1.0	N25-30x32	25	30	32	7.8	N50-60x50	50	60	50	48.5
N12-18x14	12	18	14	1.0	N25-32x20	25	32	20	7.0	N54-62x60	54	62	60	
N15-20x15	15	20	15	2.5	N25-35x20	25	35	20	10.5	N54-70x60	60	70	60	68.0
N15-22x15	15	22	15	3.0	N28-32x20	28	32	20	5.0					
N15-25x15	15	25	15	3.5	N28-38x19	28	38	19	6.0					
N16-20x15	16	20	15	2.0	N30-35x20	30	35	20	5.7					
N16-22x15	16	22	15	3.2	N30-36x30	30	36	30	10.5					
N16-24x15	16	24	15	4.2	N30-40x30	30	40	30	12.0					

Part No. = ID - OD x LENGTH

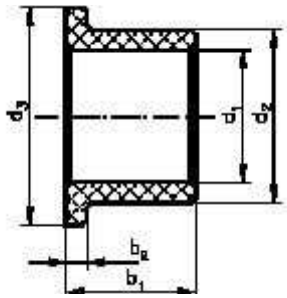


PTFE (Teflon® type material) Sleeve Split Bearings



Part No.	ID d	OD D	L	Wt. g	Part No.	ID d	OD D	L	Wt. g	Part No.	ID d	OD D	L	Wt. g
ST3-4.5x4	3	4.5	4	0.1	ST12-14x10	12	14	10	3.0	ST25-28x25	25	28	25	23.9
ST3-4.5x5	3	4.5	5	0.3	ST12-14x12	12	14	12	3.7	ST25-28x30	25	28	30	28.4
ST3-4.5x6	3	4.5	6	0.4	ST12-14x15	12	14	15	4.7	ST25-28x40	25	28	40	37.3
ST4-5.5x4	4	5.5	4	0.3	ST12-14x20	12	14	20	6.1	ST26-30x15	26	30	15	15.6
ST4-5.5x6	4	5.5	6	0.6	ST14-16x10	14	16	10	3.6	ST26-29x20	26	29	20	26.1
ST4-5.5x8	4	5.5	8	0.9	ST14-16x20	14	16	20	7.1	ST26-29x30	26	29	30	39.0
ST5-7x5	5	7	5	0.7	ST15-14x10	15	17	10	3.8	ST28-32x20	28	32	20	28.8
ST5-7x8	5	7	8	1.1	ST15-17x12	15	17	12	4.5	ST28-32x25	28	32	25	39.0
ST6-8x5	6	8	5	0.7	ST15-17x15	15	17	15	5.7	ST30-34x12	30	34	12	17.5
ST6-8x6	6	8	6	0.9	ST15-17x20	15	17	20	7.6	ST30-34x15	30	34	15	22.9
ST6-8x10	6	8	10	1.7	ST16-18x10	16	18	10	4.6	ST30-34x20	30	34	20	30.9
ST7-9x10	7	9	10	1.8	ST16-18x15	16	18	15	6.1	ST30-34x30	30	34	30	46.1
ST8-10x6	8	10	6	1.2	ST16-18x20	16	18	20	8.1	ST30-34x35	30	34	35	53.0
ST8-10x8	8	10	8	1.7	ST16-18x25	16	18	25	10.1	ST32-36x20	32	36	20	32.0
ST8-10x10	8	10	10	2.1	ST18-20x20	18	20	20	8.9	ST32-36x25	32	36	25	40.2
ST9-11x10	9	11	10	2.2	ST20-23x10	20	23	10	7.5	ST35-39x20	35	39	20	35.4
ST10-12x6	10	12	6	1.9	ST20-23x12	20	23	12	6.8	ST35-39x40	35	39	40	70.8
ST10-12x8	10	12	8	2.0	ST20-23x15	20	23	15	11.6	ST38-42x30	38	42	30	56.9
ST10-12x10	10	12	10	2.5	ST20-23x20	20	23	20	15.1	ST40-44x20	40	44	20	40.0
ST10-12x12	10	12	12	2.9	ST20-23x30	20	23	30	23.0	ST10-44x30	40	44	30	60.2
ST10-12x15	10	12	15	3.8	ST22-25x20	22	25	20	16.6	ST40-44x50	40	44	50	101.5
ST10-12x20	10	12	20	5.3	ST24-27x25	24	27	25	23.8	ST50-55x30	50	55	30	95.0
ST12-14x6	12	14	6	1.7	ST25-28x15	25	28	15	14.2	ST50-55x50	50	55	50	159.9
ST12-14x8	12	14	8	2.0	ST25-28x20	25	28	20	10.0					

Part No. = ID - OD x LENGTH



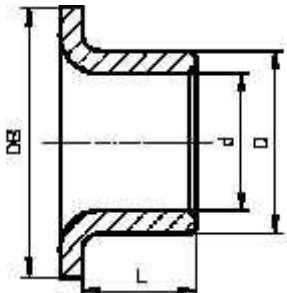
Metric Nylon Flange Bearings

Injection molded polyamide 6.6



Part No.	d ₁	d ₂	b ₁	d ₃	b ₂	Wt. g	Part No.	d ₁	d ₂	b ₁	d ₃	b ₂	Wt. g
N6-10x8-15x1.5	6	10	8	15	1.5	0.8	N25-32x20-40x3	25	30	20	36	3	6.0
N8-12x6-16x2	8	12	6	16	2	0.8		25	32	20	40	3	8.5
N8-14x10-20x2	8	14	10	20	2	1.7	N25-35x20-45x3	25	35	20	45	3	12.7
N10-12x6-16x2	10	12	6	16	2	0.6	N25-35x30-45x4	25	35	30	45	4	18.5
N10-14x10-20x2	10	14	10	20	2	1.3	N28-32x30-40x4	28	32	30	40	4	8.0
							N28-38x30-48x4	28	38	30	48	4	20.0
N10-16x10-20x2	10	16	10	20	2	1.8	N30-32x30-40x4	30	32	30	40	4	5.0
N12-14x10-20x2	12	14	10	20	2	1.0							
N12-16x10-20x2	12	16	10	20	2	1.5	N30-35x30-45x4	30	35	30	45	4	11.5
N14-20x24-30x2	14	20	24	30	2	2.8	N30-38x30-48x4	30	38	30	48	4	17.0
N16-20x15-28x2	16	20	15	28	2	2.8	N32-35x30-45x4	32	35	30	45	4	10.0
							N32-38x30-48x4	32	38	30	48	4	18.5
N16-22x15-30x2	16	22	15	30	2	4.0	N32-40x30-50x4	32	40	30	50	4	19.0
N16-24x15-30x2	16	24	15	30	2	5.0							
N20-24x15-30x2	20	24	15	30	2	3.0	N40-44x40-54x5	40	44	40	54	5	16.5
N20-25x15-30x2	20	25	15	30	2	3.5	N40-48x40-58x5	40	48	40	58	5	30.0
N20-26x12-30x2	20	26	12	30	2	3.5	N40-50x40-60x5	40	50	40	60	5	36.0
							N50-56x50-70x5	50	56	50	70	5	42.0
N20-26x15-32x2	20	26	15	32	2	4.5	N50-60x50-70x5	50	60	50	70	5	52.0
N20-26x20-32x3	20	26	20	32	3	5.8	N60-70x60-80x5	60	70	60	80	5	74.0
N20-30x20-36x3	20	30	20	36	3	9.7							

Part No. = ID - OD x LENGTH - FLANGE OD X FLANGE THICKNESS



PTFE (Teflon® type material) Flange Split Bearings



Part No.	d	D	L	DB	Wt. g	Part No.	d	D	L	DB	Wt. g
ST3-4.6x5-7	3	4.6	5.0	7	0.3	ST15-17x17-23	15	17	17.0	23	8.5
ST4-5.6x5-9	4	5.6	5.0	9	0.5	ST16-18x17-24	16	18	17.0	24	9.1
ST5-7x6-10	5	7	6.0	10	0.9	ST18-20x12-26	18	20	12.0	26	6.6
ST6-8x7-12	6	8	7.0	12	1.4	ST20-23x11.5-30	20	23	11.5	30	13.7
ST8-10x5.5-15	8	10	5.5	15	1.9	ST22-25x21.5-33	22	25	21.5	33	21.0
ST8-10x9.5-15	8	10	9.5	15	2.3	ST25-28x26.5-35	25	28	26.5	35	27.3
ST10-12x9-18	10	12	9.0	18	2.9	ST30-34x30-42	30	34	30.0	42	53.3
ST10-12x12-18	10	12	12.0	18	4.0	ST35-39x26-47	35	39	26.0	47	46.0
ST12-14x17-20	12	14	17.0	20	5.6	ST35-39x40-49	35	39	40.0	49	81.4
ST14-16x17-22	14	16	17.0	22	6.2	ST40-44x26-53	40	44	26.0	53	92.0
ST15-17x12-23	15	17	12.0	23	5.0	ST50-55x22-60	50	55	22.0	60	145.8

Part No. = ID - OD x LENGTH - FLANGE OD