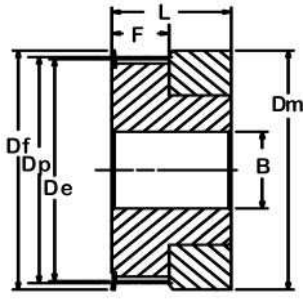
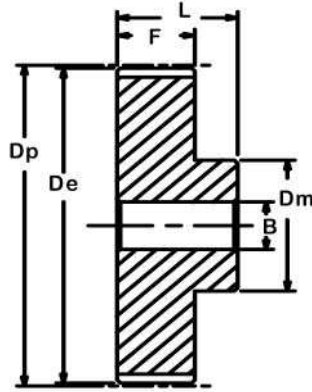


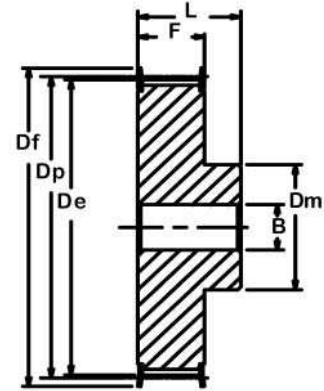
# HTD<sup>®</sup> Synchronous Belt Pulleys



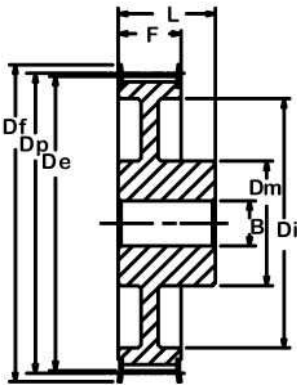
Type 1F



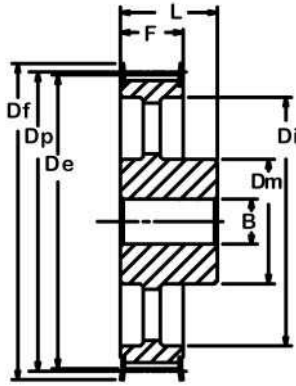
Type 6



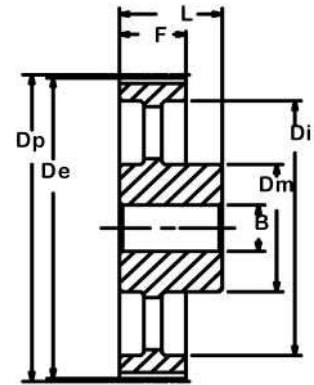
Type 6F



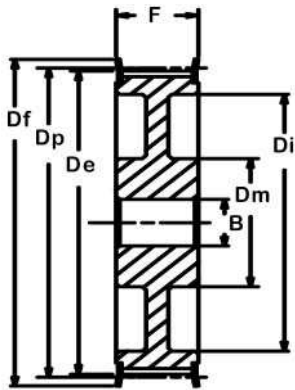
Type 6WF



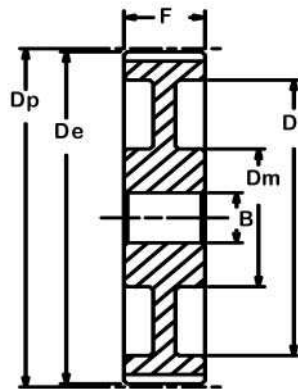
Type 6AF



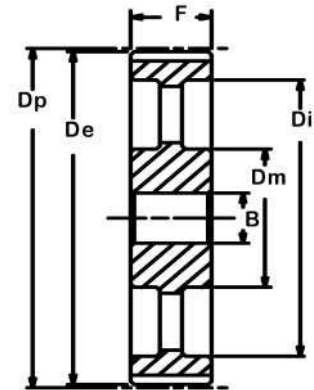
Type 6A



Type 10WF



Type 10W



Type 10A



# HTD® Synchronous Belt Pulleys



## 3 mm Pitch x 6 mm Belt Width

Part No.	Type/Mat.	Teeth	Dp	De	Approx. Df	Dm	F	L	Bore* <sup>2</sup> ±1 mm	Weight kg	Flange Size* <sup>1</sup>
3M10X6	1F/A	10	9.55	8.79	13.0	13.0	7.2	14.5	3		6x13x0.5
3M12X6	1F/A	12	11.46	10.70	15.0	15.0	7.2	14.5	4		8x15x0.5
3M14X6	1F/A	14	13.37	12.61	16.0	16.0	7.2	14.5	4		9.5x16x0.5
3M15X6	1F/A	15	14.32	13.56	17.5	17.0	7.2	14.5	4		10.5x17.5x0.5
3M16X6	2F/A	16	15.28	14.52	18.0	10.0	9.8	17.5	6.0		11.6x17.5x0.5
3M18X6	2F/A	18	17.19	16.43	19.5	11.0	9.8	17.5	6.0		12.2x20x0.5
3M20X6	2F/A	20	19.10	18.34	23.0	13.0	9.8	17.5	6.0		14x23x0.5
3M21X6	2F/A	21	20.05	19.29	25.0	14.0	9.8	17.5	6.0		15x25x0.5
3M22X6	2F/A	22	21.01	20.25	25.0	14.0	9.8	17.5	6.0		15x25x0.5
3M24X6	2F/A	24	22.92	22.16	25.0	14.0	9.8	17.5	6.0		15x25x0.5
3M26X6	2F/A	26	24.83	24.07	28.0	16.0	9.8	17.5	6.0		20x28x0.5
3M28X6	2F/A	28	26.74	25.98	32.0	18.0	9.8	17.5	6.0		23x32x0.5
3M30X6	2F/A	30	28.65	27.89	32.0	20.0	9.8	17.5	6.0		23x32x0.5
3M32X6	2F/A	32	30.56	29.80	37.0	22.0	9.8	17.5	6.0		25x36x0.5
3M36X6	2F/A	36	34.38	33.62	38.0	26.0	10.3	18.0	6.0		28x39x0.5
3M40X6	2F/A	40	38.20	37.44	43.0	28.0	10.3	18.0	6.0		30.5x42x0.5
3M44X6	2F/A	44	42.02	41.26	48.0	33.0	10.3	18.0	6.0		37x48x0.5
3M48X6	2	48	45.84	45.08		33.0	10.3	18.6	8.0		40x51x0.5
3M60X6	2	60	57.30	56.54		33.0	10.3	18.6	8.0		33x44x0.5
3M72X6	2	72	68.75	67.99		33.0	10.3	18.6	8.0		66x75x0.5

\* Weights upon request\*

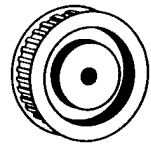
## 3 mm Pitch x 9 mm Belt Width

Part No.	Type/Mat.	Teeth	Dp	De	Approx. Df	Dm	F	L	Bore* <sup>2</sup> ±1 mm	Weight kg	Flange Size* <sup>1</sup>
3M10X9	1F/A	10	9.55	8.79	13.0	13.0	10.2	17.5		0.004	6x13x0.5
3M12X9	1F/A	12	11.46	10.70	15.0	15.0	10.2	17.5		0.006	8x15x0.5
3M14X9	1F/A	14	13.37	12.61	16.0	16.0	10.2	17.5		0.007	9.5x16x0.5
3M15X9	1F/A	15	14.32	13.56	17.5	17.0	10.2	17.5		0.008	10.5x17.5x0.5
3M16X9	6F/A	16	15.28	14.52	18.0	10.0	12.8	20.6	6.0	0.007	11.6x17.5x0.5
3M18X9	6F/A	18	17.19	16.43	19.5	11.0	12.8	20.6	6.0	0.008	12.2x20x0.5
3M20X9	6F/A	20	19.10	18.34	23.0	13.0	12.8	20.6	6.0	0.010	14x23x0.5
3M21X9	6F/A	21	20.05	19.29	25.0	14.0	12.8	20.6	6.0	0.013	15x25x0.5
3M22X9	6F/A	22	21.01	20.25	25.0	14.0	12.8	20.6	6.0	0.014	15x25x0.5
3M24X9	6F/A	24	22.92	22.16	25.0	14.0	12.8	20.6	6.0	0.016	15x25x0.5
3M26X9	6F/A	26	24.83	24.07	28.0	16.0	12.8	20.6	6.0	0.018	20x28x0.5
3M28X9	6F/A	28	26.73	25.98	32.0	18.0	12.8	20.6	6.0	0.024	23x32x0.5
3M30X9	6F/A	30	28.65	27.89	32.0	20.0	12.8	20.6	6.0	0.028	23x32x0.5
3M32X9	6F/A	32	30.56	29.80	37.0	22.0	12.8	20.6	6.0	0.032	25x36x0.5
3M36X9	6F/A	36	34.38	33.62	38.0	26.0	13.4	22.2	6.0	0.045	28x39x0.5
3M40X9	6F/A	40	38.20	37.44	43.0	28.0	13.4	22.2	6.0	0.055	30.5x42x0.5
3M44X9	6F/A	44	42.02	41.26	48.0	33.0	13.4	22.2	6.0	0.074	37x48x0.5
3M48X9	6/A	48	45.84	45.08		33.0	13.4	22.2	8.0	0.106	
3M60X9	6/A	60	57.30	56.54		33.0	13.4	22.2	8.0	0.106	
3M72X9	6/A	72	68.75	67.99		33.0	13.4	22.2	8.0	0.145	





# HTD® Synchronous Belt Pulleys

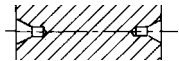


## 3 mm Pitch x 15 mm Belt Width

Part No.	Type/ Mat.	Teeth	Dp	De	Approx. Df	Dm	F	L	Bore*2 ±1 mm	Weight kg	Flange Size*1
3M10X15	1F/A	10	9.55	8.79	13.0	13.0	17.0	26.0		0.006	6x13x0.5
3M12X15	1F/A	12	11.46	10.70	15.0	15.0	17.0	26.0		0.008	8x15x0.5
3M14X15	1F/A	14	13.37	12.61	16.0	16.0	17.0	26.0		0.010	9.5x16x0.5
3M15X15	1F/A	15	14.32	13.56	17.5	17.0	17.0	26.0		0.012	10.5x17.5x0.5
3M16X15	6F/A	16	15.28	14.52	18.0	10.0	19.5	26.0	6.0	0.010	11.6x17.5x0.5
3M18X15	6F/A	18	17.19	16.43	19.5	11.0	19.5	26.0	6.0	0.012	12.2x20x0.5
3M20X15	6F/A	20	19.10	18.34	23.0	13.0	19.5	26.0	6.0	0.014	14x23x0.5
3M21X15	6F/A	21	20.05	19.29	25.0	14.0	19.5	26.0	6.0	0.016	15x25x0.5
3M22X15	6F/A	22	21.01	20.25	25.0	14.0	19.5	26.0	6.0	0.018	15x25x0.5
3M24X15	6F/A	24	22.92	22.16	25.0	14.0	19.5	26.0	6.0	0.020	15x25x0.5
3M26X15	6F/A	26	24.83	24.07	28.0	16.0	19.5	26.0	6.0	0.027	20x28x0.5
3M28X15	6F/A	28	26.73	25.98	32.0	18.0	19.5	26.0	6.0	0.031	23x32x0.5
3M30X15	6F/A	30	28.65	27.89	32.0	20.0	19.5	26.0	6.0	0.035	23x32x0.5
3M32X15	6F/A	32	30.56	29.80	37.0	22.0	19.5	26.0	6.0	0.042	25x36x0.5
3M36X15	6F/A	36	34.38	33.62	38.0	26.0	20.0	30.0	6.0	0.060	28x39x0.5
3M40X15	6F/A	40	38.20	37.44	43.0	28.0	20.0	30.0	6.0	0.075	30.5x42x0.5
3M44X15	6F/A	44	42.02	41.26	48.0	33.0	20.0	30.0	6.0	0.095	37x48x0.5
3M48X15	6/A	48	45.84	45.08		33.0	20.0	30.0	8.0	0.103	
3M60X15	6/A	60	57.30	56.54		33.0	20.0	30.0	8.0	0.150	
3M72X15	6/A	72	68.75	67.99		33.0	20.0	30.0	8.0	0.212	

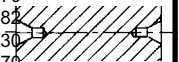
\*1 Recommended flange size (I.D. x O.D. x Thickness); steel.  
 Material: /A = Aluminum • /C = Cast Iron • /S = Steel  
 Metric tolerances correspond to ISO standard H9 for bores and  
 keyways. Inch tolerances correspond to ANSI B17.1 for bores  
 and keyways.

\*2 Center holes provided if no bore size listed



## 5 mm Pitch x 9 mm Belt Width

Part No.	Type/ Mat.	Teeth	Dp	De	Approx. Df	Dm	F	L	Bore*2 ±1 mm	Weight kg	Flange Size*1
5M12X9	6F/S	12	19.10	17.96	23.0	13.0	14.5	20.0	6.0	0.028	14x23x1
5M14X9	6F/S	14	22.28	21.14	25.0	14.0	14.5	20.0	6.0	0.034	15x25x1
5M15X9	6F/S	15	23.87	22.73	28.0	16.0	14.5	20.0	6.0	0.042	17.8x28x1
5M16X9	6F/S	16	25.46	24.32	28.0	16.5	14.5	20.0	6.0	0.050	17.8x28x1
5M18X9	6F/S	18	28.65	27.51	32.0	20.0	14.5	20.0	6.0	0.070	23x32x1
5M20X9	6F/S	20	31.83	30.69	37.0	23.0	14.5	22.5	6.0	0.094	25x36x1
5M21X9	6F/S	21	33.42	32.28	38.0	24.0	14.5	22.5	6.0	0.110	26.5x38x1
5M22X9	6F/S	22	35.01	33.87	38.0	25.5	14.5	22.5	6.0	0.118	28x39x1
5M24X9	6F/S	24	38.20	37.06	43.0	27.0	14.5	22.5	6.0	0.145	30.5x42x1
5M26X9	6F/S	26	41.38	40.24	44.0	30.0	14.5	22.5	6.0	0.170	32.5x44x1
5M28X9	6F/S	28	44.56	43.42	48.0	30.5	14.5	22.5	6.0	0.200	37x48x1
5M30X9	6F/S	30	47.75	46.60	51.0	35.0	14.5	22.5	6.0	0.236	40x51x1
5M32X9	6F/S	32	50.93	49.79	54.0	38.0	14.5	22.5	8.0	0.270	43x54x1
5M36X9	6F/S	36	57.30	56.16	60.0	38.0	14.5	22.5	8.0	0.324	47x60x1
5M40X9	6F/S	40	63.66	62.52	70.0	38.0	14.5	22.5	8.0	0.400	56x71x1
5M44X9	6W/A	44	70.03	68.89		38.0	14.5	25.5	8.0	0.170	
5M48X9	6W/A	48	76.39	75.25		45.0	14.5	25.5	8.0	0.182	
5M60X9	6W/A	60	95.49	94.35		45.0	14.5	25.5	8.0	0.230	
5M72X9	6W/A	72	114.59	113.45		45.0	14.5	25.5	8.0	0.270	





# HTD® Synchronous Belt Pulleys



## 5 mm Pitch x 15 mm Belt Width

Part No.	Type/ Mat.	Teeth	Dp	De	Approx. Df	Dm	F	L	Bore* <sup>2</sup> ±1 mm	Weight kg	Flange Size* <sup>1</sup>
5M12X15	6F/S	12	19.10	17.96	23.0	13.0	20.5	26.0	6.0	0.034	14x23x1
5M14X15	6F/S	14	22.28	21.14	25.0	14.0	20.5	26.0	6.0	0.046	15x25x1
5M15X15	6F/S	15	23.87	22.73	28.0	16.0	20.5	26.0	6.0	0.056	17.8x28x1
5M16X15	6F/S	16	25.46	24.32	28.0	16.5	20.5	26.0	6.0	0.064	17.8x28x1
5M18X15	6F/S	18	28.65	27.51	32.0	20.0	20.5	26.0	6.0	0.086	23x32x1
5M20X15	6F/S	20	31.83	30.69	37.0	23.0	20.5	26.0	6.0	0.112	25x36x1
5M21X15	6F/S	21	33.42	32.28	38.0	24.0	20.5	26.0	6.0	0.130	26.5x38x1
5M22X15	6F/S	22	35.01	33.87	38.0	25.5	20.5	26.0	6.0	0.140	28x39x1
5M24X15	6F/S	24	38.20	37.06	43.0	27.0	20.5	28.0	6.0	0.180	30.5x42x1
5M26X15	6F/S	26	41.38	40.24	44.0	30.0	20.5	28.0	6.0	0.220	32.5x44x1
5M28X15	6F/S	28	44.56	43.42	48.0	30.5	20.5	28.0	6.0	0.250	37x48x1
5M30X15	6F/S	30	47.75	46.60	51.0	35.0	20.5	28.0	6.0	0.300	40x51x1
5M32X15	6F/S	32	50.93	49.79	54.0	38.0	20.5	28.0	8.0	0.350	43x54x1
5M34X15	6F/S	34	54.10	52.96	57.0	38.0	20.5	28.0	8.0	0.385	46x57x1
5M36X15	6F/S	36	57.30	56.16	60.0	38.0	20.5	28.0	8.0	0.426	47x60x1
5M40X15	6F/S	40	63.66	62.52	70.0	38.0	20.5	28.0	8.0	0.520	56x71x1
5M44X15	6W/A	44	70.03	68.89		38.0	20.5	30.0	8.0	0.225	
5M48X15	6W/A	48	76.39	75.25		38.0	20.5	30.0	8.0	0.287	
5M60X15	6W/A	60	95.49	94.35		50.0	20.5	30.0	8.0	0.305	
5M72X15	6W/A	72	114.59	113.45		50.0	20.5	30.0	8.0	0.365	

\*<sup>1</sup>Recommended flange size (I.D. x O.D. x Thickness); steel.  
 Material: /A = Aluminum • /C = Cast Iron • /S = Steel  
 Metric tolerances correspond to ISO standard H9 for bores and  
 keyways. Inch tolerances correspond to ANSI B17.1 for bores  
 and keyways.

\*<sup>2</sup> Center holes pro-  
 vided if no bore size  
 listed

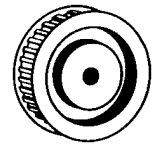
## 5 mm Pitch x 25 mm Belt Width

Part No.	Type/ Mat.	Teeth	Dp	De	Approx. Df	Dm	Di	F	L	Bore* <sup>2</sup> ±1 mm	Weight kg	Flange Size* <sup>1</sup>
5M12X25	6F/S	12	19.10	17.96	23.0	13.0		30.5	36.0	6.0	0.050	14x23x1
5M14X25	6F/S	14	22.28	21.14	25.0	14.0		30.5	36.0	6.0	0.070	15x25x1
5M15X25	6F/S	15	23.87	22.73	28.0	16.0		30.5	36.0	6.0	0.080	17.8x28x1
5M16X25	6F/S	16	25.46	24.32	28.0	16.5		30.5	36.0	6.0	0.100	17.8x28x1
5M18X25	6F/S	18	28.65	27.51	32.0	20.0		30.5	36.0	6.0	0.120	23x32x1
5M20X25	6F/S	20	31.83	30.69	37.0	23.0		30.5	36.0	6.0	0.160	25x36x1
5M21X25	6F/S	21	33.42	32.28	38.0	24.0		30.5	38.0	6.0	0.190	26.5x38x1
5M22X25	6F/S	22	35.01	33.87	38.0	25.5		30.5	38.0	6.0	0.210	28x39x1
5M24X25	6F/S	24	38.20	37.06	43.0	27.0		30.5	38.0	6.0	0.250	30.5x42x1
5M26X25	6F/S	26	41.38	40.24	44.0	30.0		30.5	38.0	6.0	0.300	32.5x44x1
5M28X25	6F/S	28	44.56	43.42	48.0	30.5		30.5	38.0	6.0	0.350	37x48x1
5M30X25	6F/S	30	47.75	46.60	51.0	35.0		30.5	38.0	6.0	0.420	40x51x1
5M32X25	6F/S	32	50.93	49.79	54.0	38.5		30.5	38.0	8.0	0.480	43x54x1
5M36X25	6F/S	36	57.30	56.16	60.0	38.0		30.5	38.0	8.0	0.590	47x60x1
5M40X25	6F/S	40	63.66	62.52	70.0	38.0		30.5	38.0	8.0	0.740	56x71x1
5M44X25	6/A	44	70.03	68.89		38.0		30.5	40.0	8.0	0.320	
5M48X25	6W/A	48	76.39	75.25		38.0		30.5	40.0	8.0	0.275	
5M60X25	6W/A	60	95.49	94.35		50.0		30.5	40.0	8.0	0.435	
5M72X25	6W/A	72	114.59	113.45		50.0		30.5	40.0	8.0	0.525	





# HTD® Synchronous Belt Pulleys



## 8 mm Pitch x 20 mm Belt Width

Part No.	Type/ Mat.	Teeth	Dp	De	Approx. Df	Dm	Di	F	L	Bore* <sup>2</sup> ±1 mm	Weight kg	Flange Size* <sup>1</sup>
8M22X20	6F/S	22	56.02	54.65	60	43		28	38	12	0.54	47x60x1.5
8M24X20	6F/S	24	61.12	59.75	67	45		28	38	12	0.65	52x66x1.5
8M26X20	6F/S	26	66.21	64.85	70	50		28	38	12	0.80	53x70x1.5
8M28X20	6F/S	28	71.30	70.08	75	50		28	38	14-16	0.87	60x75x1.5
8M30X20	6F/S	30	76.39	75.13	83	55		28	38	14-16	1.02	64x82.5x1.5
8M32X20	6F/S	32	81.49	80.16	87	60		28	38	14-16	1.20	72x87x1.5
8M34X20	6F/S	34	86.58	85.22	91	70		28	38	14-16	1.40	73x91x1.5
8M36X20	6F/S	36	91.67	90.30	97	70		28	38	14-16	1.55	79x97x1.5
8M38X20	6F/S	38	96.77	95.39	102	75		28	38	14-16	1.65	82.5x102x1.5
8M40X20	6F/S	40	101.86	100.49	106	75		28	38	14-16	1.74	90x106x1.5
8M44X20	6F/S	44	112.05	110.67	120	75		28	38	14-16	2.10	99.5x120x1.5
8M48X20	6F/S	48	122.23	120.86	128	75		28	38	14-16	2.44	107x128x1.5
8M56X20	6WF/S	56	142.60	141.23	150	80	117	28	38	14-16	2.60	130x150x1.5
8M64X20	6WF/S	64	162.97	161.60	168	80	137	28	38	14-16	2.90	148x168x1.5
8M72X20	6AF/S	72	183.35	181.97	192	80	158	28	38	14-16	3.10	173x192x1.5
8M80X20	6A/C	80	203.72	202.35		90	180	28	38	14-16	3.80	
8M90X20	6A/C	90	229.18	227.81		90	204	28	38	14-16	4.20	
8M112X20	6A/C	112	285.21	283.83		90	260	28	38	16	5.20	
8M144X20	6A/C	144	366.69	365.32		90	341	28	38	20	7.50	
8M168X20	6A/C	168	427.81	426.44		100	402	28	38	20	10.00	
8M192X20	6A/C	192	488.92	487.55		100	463	28	38	20	14.40	

\*1 Recommended flange size (I.D. x O.D. x Thickness); steel.  
 Material: /A = Aluminum • /C = Cast Iron • /S = Steel  
 Metric tolerances correspond to ISO standard H9 for bores and  
 keyways. Inch tolerances correspond to ANSI B17.1 for bores  
 and keyways.

\*2 Center holes pro-  
 vided if no bore size  
 listed



## 8 mm Pitch x 30 mm Belt Width

Part No.	Type/ Mat.	Teeth	Dp	De	Approx. Df	Dm	Di	F	L	Bore* <sup>2</sup> ±1 mm	Weight kg	Flange Size* <sup>1</sup>
8M22X30	6F/S	22	56.02	54.65	60	43		38	48	12	0.69	47x60x1.5
8M24X30	6F/S	24	61.12	59.75	67	45		38	48	12	0.84	52x66x1.5
8M26X30	6F/S	26	66.21	64.85	70	50		38	48	12	1.00	53x70x1.5
8M28X30	6F/S	28	71.30	70.08	75	50		38	48	14-16	1.12	60x75x1.5
8M30X30	6F/S	30	76.39	75.13	83	55		38	48	14-16	1.32	64x82.5x1.5
8M32X30	6F/S	32	81.49	80.16	87	60		38	48	14-16	1.53	72x87x1.5
8M34X30	6F/S	34	86.58	85.22	91	70		38	48	14-16	1.80	73x91x1.5
8M36X30	6F/S	36	91.67	90.30	97	70		38	48	14-16	1.99	79x97x1.5
8M38X30	6F/S	38	96.77	95.39	102	75		38	48	14-16	2.27	82.5x102x1.5
8M40X30	6F/S	40	101.86	100.49	106	75		38	48	14-16	2.40	90x106x1.5
8M44X30	6F/S	44	112.05	110.67	120	75		38	48	14-16	2.80	99.5x120x1.5
8M48X30	6F/S	48	122.23	120.86	128	75		38	48	14-16	3.20	107x128x1.5
8M56X30	6WF/S	56	142.60	141.23	150	80	117	38	48	14-16	3.60	130x150x1.5
8M64X30	6WF/S	64	162.97	161.60	168	80	138	38	48	14-16	4.30	148x168x1.5
8M72X30	6AF/S	72	183.35	181.97	192	80	158	38	48	14-16	4.80	173x192x1.5
8M80X30	6A/C	80	203.72	202.35		90	180	38	48	14-16	5.10	
8M90X30	6A/C	90	229.18	227.81		90	204	38	48	14-16	5.70	
8M112X30	6A/C	112	285.21	283.83		90	260	38	48	16	6.80	
8M144X30	6A/C	144	366.69	365.32		90	341	38	48	20	9.30	
8M168X30	6A/C	168	427.81	426.44		100	402	38	48	20	11.40	
8M192X30	6A/C	192	488.92	487.55		100	463	38	48	20	16.00	



# HTD® Synchronous Belt Pulleys

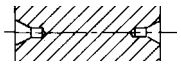


## 8 mm Pitch x 50 mm Belt Width

Part No.	Type/ Mat.	Teeth	Dp	De	Approx. Df	Dm	Di	F	L	Bore* <sup>2</sup> ±1 mm	Weight kg	Flange Size* <sup>1</sup>
8M22X50	6F/S	22	56.02	54.65	60	43		60	70	12	1.00	47x60x1.5
8M24X50	6F/S	24	61.12	59.75	67	45		60	70	12	1.23	52x66x1.5
8M26X50	6F/S	26	66.21	64.84	70	50		60	70	12	1.50	53x70x1.5
8M28X50	6F/S	28	71.30	70.08	75	50		60	70	16	1.67	60x75x1.5
8M30X50	6F/S	30	76.39	75.13	83	55		60	70	16	1.97	64x82.5x1.5
8M32X50	6F/S	32	81.49	80.16	87	60		60	70	16	2.27	72x87x1.5
8M34X50	6F/S	34	86.58	85.22	91	70		60	70	16	2.69	73x91x1.5
8M36X50	6F/S	36	91.67	90.30	97	70		60	70	16	2.97	79x97x1.5
8M38X50	6F/S	38	96.77	95.39	102	75		60	70	16	3.23	82.5x102x1.5
8M40X50	6F/S	40	101.86	100.49	106	75		60	70	18	3.50	90x106x1.5
8M44X50	6F/S	44	112.05	110.67	120	75		60	70	18	3.90	99.5x120x1.5
8M48X50	6F/S	48	122.23	120.86	128	80		60	70	18	4.30	107x128x1.5
8M56X50	10WF/S	56	142.60	141.23	150	90	117	60	60	18	5.00	130x150x1.5
8M64X50	10WF/S	64	162.97	161.60	168	100	137	60	60	18	5.60	148x168x1.5
8M72X50	10AF/S	72	183.35	181.97	192	100	158	60	60	18	6.80	173x192x1.5
8M80X50	10A/C	80	203.72	202.35		110	180	60	60	18	6.90	
8M90X50	10A/C	90	229.18	227.81		110	204	60	60	18	8.60	
8M112X50	10A/C	112	285.21	283.83		110	260	60	60	18	9.60	
8M144X50	10A/C	144	366.69	365.32		110	341	60	60	20	13.80	
8M168X50	10A/C	168	427.81	426.44		120	402	60	60	20	16.00	
8M192X50	10A/C	192	488.92	487.55		130	463	60	60	20	22.40	

\*<sup>1</sup>Recommended flange size (I.D. x O.D. x Thickness); steel.  
Material: /A = Aluminum • /C = Cast Iron • /S = Steel  
Metric tolerances correspond to ISO standard H9 for bores and keyways. Inch tolerances correspond to ANSI B17.1 for bores and keyways.

\*<sup>2</sup> Center holes provided if no bore size listed



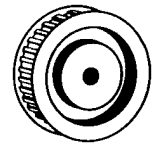
## 8 mm Pitch x 85 mm Belt Width

Part No.	Type/ Mat.	Teeth	Dp	De	Approx. Df	Dm	Di	F	L	Bore* <sup>2</sup> ±1 mm	Weight kg	Flange Size* <sup>1</sup>
8M22X85	6F/S	22	56.02	54.65	60	43		95	105	12	1.55	47x60x1.5
8M24X85	6F/S	24	61.12	59.75	67	45		95	105	12	1.90	52x66x1.5
8M26X85	6F/S	26	66.21	64.84	70	50		95	105	12	2.25	53x70x1.5
8M28X85	6F/S	28	71.30	70.08	75	50		95	105	16	2.55	60x75x1.5
8M30X85	6F/S	30	76.39	75.13	83	55		95	105	16	3.00	64x82.5x1.5
8M32X85	6F/S	32	81.49	80.16	87	60		95	105	16	3.57	72x87x1.5
8M34X85	6F/S	34	86.58	85.22	91	70		95	105	16	4.00	73x91x1.5
8M36X85	6F/S	36	91.67	90.30	97	70		95	105	16	4.50	79x97x1.5
8M38X85	6F/S	38	96.77	95.39	102	75		95	105	16	4.90	82.5x102x1.5
8M40X85	6F/S	40	101.86	100.49	106	75		95	105	16	5.20	90x106x1.5
8M44X85	6F/S	44	112.05	110.67	120	75		95	105	18	6.60	99.5x120x1.5
8M48X85	6F/S	48	122.23	120.86	128	80		95	105	18	7.60	107x128x1.5
8M56X85	6F/S	56	142.60	141.23	148	90		95	105	20	9.80	130x150x1.5
8M64X85	10WF/S	64	162.97	161.60	168	100	137	95	95	20	10.40	148x168x1.5
8M72X85	10AF/S	72	183.35	181.97	192	100	158	95	95	20	11.40	173x192x1.5
8M80X85	10A/C	80	203.72	202.35		110	180	95	95	20	13.20	
8M90X85	10A/C	90	229.18	227.81		110	204	95	95	20	16.30	
8M112X85	10A/C	112	285.21	283.83		110	260	95	95	25	21.50	
8M144X85	10A/C	144	366.69	365.32		110	341	95	95	25	23.60	
8M168X85	10A/C	168	427.81	426.44		120	402	95	95	25	26.10	
8M192X85	10A/C	192	488.92	487.55		130	463	95	95	25	30.60	





# HTD® Synchronous Belt Pulleys



## 14 mm Pitch x 40 mm Belt Width

Part No.	Type/ Mat.	Teeth	Dp	De	Approx. Df	Dm	Di	F	L	Bore* <sup>2</sup> ±1 mm	Weight kg	Flange Size* <sup>1</sup>
14M28X40	6F/S	28	124.78	122.12	128	100		54	69	24	4.73	107x128x2.5
14M29M40	6F/S	29	129.23	126.57	142	100		54	69	24	5.09	112x138x2.5
14M30X40	6F/S	30	133.69	130.99	142	100		54	69	24	5.45	112x138x2.5
14M32X40	6F/S	32	142.60	139.88	158	100		54	69	24	6.17	122x154x2.5
14M34X40	6F/S	34	151.52	148.79	158	100		54	69	24	6.88	130x160x2.5
14M36X40	6F/S	36	160.43	157.68	168	100		54	69	24	7.60	135x168x2.5
14M38X40	6F/S	38	169.34	166.60	184	120		54	69	24	8.28	145x183x2.5
14M40X40	6F/S	40	178.25	175.49	192	120		54	69	24	9.26	150x188x2.5
14M44X40	6F/S	44	196.08	193.28	211	120		54	69	24	10.32	173x211x2.5
14M48X40	6WF/C	48	213.90	211.11	226	135	172	54	69	24	11.50	190x226x2.5
14M56X40	6WF/C	56	249.55	246.76	265	135	207	54	69	28	13.05	225x256x2.5
14M64X40	6WF/C	64	285.21	282.41	296	135	242	54	69	28	14.40	260x296x2.5
14M72X40	6A/C	72	320.86	318.06		135	278	54	69	28	16.90	
14M80X40	6A/C	80	356.51	353.71		135	314	54	69	28	18.50	
14M90X40	6A/C	90	401.07	398.28		135	358	54	69	28	20.00	
14M112X40	6A/C	112	499.11	496.32		135	456	54	69	28	26.70	
14M144X40	6A/C	144	641.71	638.92		135	600	54	69	28	35.00	
14M168X40	6A/C	168	748.66	745.87		135	706	54	69	28	44.20	
14M192X40	6A/C	192	855.62	852.82		135	813	54	69	28	52.20	
14M216X40	6A/C	216	962.57	959.76		150	920	54	69	28	60.00	

\*<sup>1</sup>Recommended flange size (I.D. x O.D. x Thickness); steel.  
 Material: /A = Aluminum • /C = Cast Iron • /S = Steel  
 Metric tolerances correspond to ISO standard H9 for bores and  
 keyways. Inch tolerances correspond to ANSI B17.1 for bores  
 and keyways.

\*<sup>2</sup> Center holes provided if no bore size listed



## 14 mm Pitch x 55 mm Belt Width

Part No.	Type/ Mat.	Teeth	Dp	De	Approx. Df	Dm	Di	F	L	Bore* <sup>2</sup> ±1 mm	Weight kg	Flange Size* <sup>1</sup>
14M28X55	6F/S	28	124.78	122.12	128	100		70	85	24	5.60	107x128x2.5
14M29X55	6F/S	29	129.23	126.57	142	100		70	85	24	6.10	112x138x2.5
14M30X55	6F/S	30	133.69	130.99	142	100		70	85	24	6.60	112x138x2.5
14M32X55	6F/S	32	142.60	139.88	158	100		70	85	24	7.60	122x154x2.5
14M34X55	6F/S	34	151.52	148.79	158	100		70	85	24	8.60	130x160x2.5
14M36X55	6F/S	36	160.43	157.68	168	100		70	85	24	9.60	135x168x2.5
14M38X55	6F/S	38	169.34	166.60	184	120		70	85	24	10.80	145x183x2.5
14M40X55	6F/S	40	178.25	175.49	192	120		70	85	24	11.20	150x188x2.5
14M44X55	6F/S	44	196.08	193.28	211	120		70	85	24	12.50	173x211x2.5
14M48X55	10WF/C	48	213.90	211.11	226	135	172	70	70	24	13.70	190x226x2.5
14M56X55	10WF/C	56	249.55	246.76	265	135	207	70	70	28	14.50	225x256x2.5
14M64X55	10WF/C	64	285.21	282.41	296	135	242	70	70	28	15.60	260x296x2.5
14M72X55	10A/C	72	320.86	318.06		135	278	70	70	28	16.90	
14M80X55	10A/C	80	356.51	353.71		135	314	70	70	28	20.00	
14M90X55	10A/C	90	401.07	398.28		135	358	70	70	28	22.60	
14M112X55	10A/C	112	499.11	496.32		135	456	70	70	28	29.50	
14M144X55	10A/C	144	641.71	638.92		135	600	70	70	28	39.00	
14M168X55	10A/C	168	748.66	745.87		135	706	70	70	28	48.50	
14M192X55	10A/C	192	855.62	852.82		135	813	70	70	28	57.80	
14M216X55	10A/C	216	962.57	959.76		150	920	70	70	28	67.00	



# HTD® Synchronous Belt Pulleys



## 14 mm Pitch x 85 mm Belt Width

Part No.	Type/Mat.	Teeth	Dp	De	Approx. Df	Dm	Di	F	L	Bore* <sup>2</sup> ±1 mm	Weight kg	Flange Size* <sup>1</sup>
14M28X85	6F/S	28	124.78	122.12	128	100		102	117	24	7.70	107x128x2.5
14M29X85	6F/S	29	129.23	126.57	142	100		102	117	24	8.40	112x138x2.5
14M30X85	6F/S	30	133.69	130.99	142	100		102	117	24	9.10	112x138x2.5
14M32X85	6F/S	32	142.60	139.88	158	100		102	117	24	10.50	122x154x2.5
14M34X85	6F/S	34	151.52	148.79	158	100		102	117	24	11.90	130x160x2.5
14M36X85	6F/S	36	160.43	157.68	168	100		102	117	32	13.20	135x168x2.5
14M38X85	6F/S	38	169.34	166.60	184	120		102	117	32	15.15	145x183x2.5
14M40X85	6F/S	40	178.25	175.49	192	135		102	117	32	17.10	150x188x2.5
14M44X85	6F/S	44	196.08	193.28	211	135		102	117	32	23.30	173x211x2.5
14M48X85	6F/S	48	213.90	211.11	226	150		102	117	32	25.00	190x226x2.5
14M56X85	10WF/C	56	249.55	246.76	265	150	207	102	102	32	25.00	225x256x2.5
14M64X85	10WF/C	64	285.21	282.41	296	150	242	102	102	32	30.50	260x296x2.5
14M72X85	10A/C	72	320.86	318.06		150	278	102	102	32	28.80	
14M80X85	10A/C	80	356.51	353.71		150	314	102	102	32	30.10	
14M90X85	10A/C	90	401.07	398.28		150	358	102	102	32	33.00	
14M112X85	10A/C	112	499.11	496.32		150	456	102	102	32	41.80	
14M144X85	10A/C	144	641.71	638.92		150	600	102	102	32	52.40	
14M168X85	10A/C	168	748.66	745.87		150	706	102	102	32	60.30	
14M192X85	10A/C	192	855.62	852.82		165	813	102	102	32	70.20	
14M216X85	10A/C	216	962.57	959.76		165	920	102	102	32	81.00	

\*1 Recommended flange size (I.D. x O.D. x Thickness); steel.  
 Material: /A = Aluminum • /C = Cast Iron • /S = Steel  
 Metric tolerances correspond to ISO standard H9 for bores and keyways. Inch tolerances correspond to ANSI B17.1 for bores and keyways.

\*2 Center holes provided if no bore size listed



## 14 mm Pitch x 115 mm Belt Width

Part No.	Type/Mat.	Teeth	Dp	De	Approx. Df	Dm	Di	F	L	Bore* <sup>2</sup> ±1 mm	Weight kg	Flange Size* <sup>1</sup>
14M28X115	6F/S	28	124.78	122.12	128	100		133	148	32	9.20	107x128x2.5
14M29X115	6F/S	29	129.23	126.57	142	100		133	148	32	10.20	112x138x2.5
14M30X115	6F/S	30	133.69	130.99	142	100		133	148	32	11.20	112x138x2.5
14M32X115	6F/S	32	142.60	139.88	158	100		133	148	32	13.20	122x154x2.5
14X34X115	6F/S	34	151.52	148.79	158	100		133	148	32	14.80	130x160x2.5
14M36X115	6F/S	36	160.43	157.68	168	120		133	148	32	16.60	135x168x2.5
14X38X115	6F/S	38	169.34	166.60	184	120		133	148	32	19.20	145x183x2.5
14M40X115	6F/S	40	178.25	175.49	192	135		133	148	32	20.56	150x188x2.5
14M44X115	6F/S	44	196.08	193.28	211	140		133	148	32	21.93	173x211x2.5
14M48X115	6F/S	48	213.90	211.11	226	150		133	148	32	25.00	190x226x2.5
14M56X115	6F/S	56	249.55	246.76	265	150		133	148	32	27.50	225x256x2.5
14M64X115	10WF/C	64	285.21	282.41	296	150	242	133	133	32	30.10	260x296x2.5
14M72X115	10A/C	72	320.86	318.06		150	278	133	133	32	32.83	
14M80X115	10A/C	80	356.51	353.71		150	314	133	133	32	35.55	
14M90X115	10A/C	90	401.07	398.28		150	358	133	133	32	41.00	
14M112X115	10A/C	112	499.11	496.32		150	456	133	133	32	54.40	
14M144X115	10A/C	144	641.71	638.92		165	600	133	133	32	67.80	
14M168X115	10A/C	168	748.66	745.87		165	706	133	133	32	75.80	
14M192X115	10A/C	192	855.62	852.82		165	813	133	133	32	88.30	
14M216X115	10A/C	216	962.57	959.76		165	920	133	133	32	98.00	

