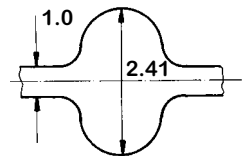


HTD® Synchronous Belts



3 mm Pitch

Belt Length	Belt Length Double Pitch	No. Teeth
111-3 M	-	37
117-3 M	-	39
120-3 M	-	40
123-3 M	-	41
126-3 M	-	42
129-3 M	-	43
141-3 M	-	47
144-3 M	-	48
150-3 M	-	50
156-3 M	-	52
159-3 M	-	53
165-3 M	-	55
168-3 M	-	56
171-3 M	-	57
174-3 M	-	58
177-3 M	-	59
180-3 M	-	60
183-3 M	-	61
186-3 M	-	62
192-3 M	-	64
195-3 M	-	65
201-3 M	-	67
204-3 M	-	68
207-3 M	-	69
210-3 M	-	70
213-3 M	-	71
216-3 M	-	72
225-3 M	-	75
237-3 M	-	79
240-3 M	-	80
243-3 M	-	81
246-3 M	-	82
249-3 M	-	83
252-3 M	-	84
255-3 M	-	85
261-3 M	-	87
264-3 M	-	88
267-3 M	-	89
276-3 M	-	92
282-3 M	-	94
285-3 M	-	95
288-3 M	-	96
291-3 M	-	97
294-3 M	-	98
300-3 M	-	100
306-3 M	-	102
312-3 M	-	104
315-3 M	-	105
318-3 M	-	106
330-3 M	-	110
333-3 M	-	111
336-3 M	-	112
339-3 M	-	113
345-3 M	-	115
357-3 M	-	119
363-3 M	-	121
366-3 M	-	122
384-3 M	-	128
390-3 M	-	130
393-3 M	-	131
420-3 M	-	140

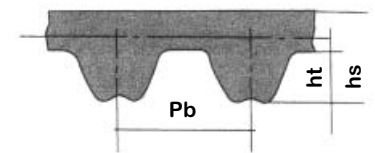
3 mm Pitch

Belt Length	Belt Length Double Pitch	No. Teeth
426-3 M	-	142
447-3 M	-	149
462-3 M	-	154
474-3 M	-	158
477-3 M	-	159
480-3 M	-	160
483-3 M	-	161
486-3 M	-	162
489-3 M	-	163
495-3 M	-	165
501-3 M	D501 3M	167
513-3 M	D513 3M	171
519-3 M	-	173
522-3 M	D522 3M	174
525-3 M	D525 3M	175
531-3 M	D531 3M	177
537-3 M	D537 3M	179
558-3 M	-	186
564-3 M	D564 3M	188
570-3 M	-	190
-	D576 3M	192
582-3 M	-	194
591-3 M	-	197
594-3 M	-	198
597-3 M	D597 3M	199
600-3 M	-	200
606-3 M	D606 3M	202
-	D609 3M	203
612-3 M	D612 3M	204
615-3 M	-	205
633-3 M	D633 3M	211
-	D639 3M	213
648-3 M	-	216
669-3 M	D669 3M	223
672-3 M	-	224
675-3 M	D675 3M	225
-	D699 3M	233
708-3 M	-	236
711-3 M	D711 3M	237
738-3 M	-	246
-	D750 3M	250
753-3 M	D753 3M	251
-	D801 3M	267
804-3 M	-	268
-	D813 3M	271
816-3 M	-	272
822-3 M	-	274
843-3 M	D843 3M	281
882-3 M	-	294
-	D885 3M	295
888-3 M	-	296
-	D936 3M	312
945-3 M	-	315
960-3 M	-	320
1041-3 M	-	347
1062-3 M	-	354
1068-3 M	-	356
1071-3 M	D1071 3M	357
1125-3 M	D1125 3M	375
1176-3 M	-	392
1245-3 M	D1245 3M	418

3 mm Pitch

Belt Length	Belt Length Double Pitch	No. Teeth
-	D1260 3M	420
1263-3 M	D1263 3M	421
-	D1344 3M	448
-	D1401 3M	467
1500-3 M	-	500
1530-3 M	-	510
1569-3 M	D1569 3M	523
1587-3 M	-	529
1589-3 M	-	530
-	D1800 3M	600
1863-3 M	-	621
-	D2388 3M	796
-	D2640 3M	880
-	D3000 3M	1000

Note:
American Metric Corporation's Advanced Polymer Group has developed a new state-of-the-art revolutionary molding process whereby special profiles can be produced at very minimal cost. If you need it, We can produce it.



Also Available in RPP Tooth

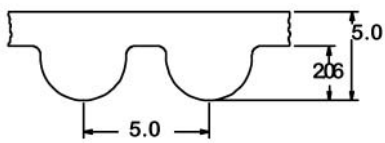
Standard Belt Width (mm)	6	9	15
--------------------------	---	---	----

Ordering Example:

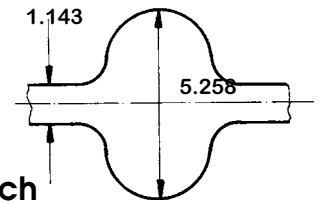
1113M6
111----- Length (mm)
3M----- Pitch
6----- Width (mm)

Ordering Example:

DG633M6
D----- Double
633----- Length (mm)
3M----- Pitch
6----- Width (mm)



HTD® Synchronous Belts



5 mm Pitch

Belt Length	Belt Length Double Pitch	No. Teeth
120-5 M	-	24
125-5 M	-	25
180-5 M	-	36
225-5 M	-	45
255-5 M	-	51
265-5 M	-	53
270-5 M	-	54
275-5 M	-	55
280-5 M	-	56
295-5 M	-	59
300-5 M	-	60
305-5 M	-	61
325-5 M	-	65
330-5 M	-	66
340-5 M	-	68
345-5 M	-	69
350-5 M	-	70
355-5 M	-	71
360-5 M	-	72
365-5 M	-	73
370-5 M	-	74
375-5 M	-	75
385-5 M	-	77
400-5 M	-	80
405-5 M	-	81
415-5 M	-	83
425-5 M	D425 5M	85
450-5 M	-	90
460-5 M	-	92
475-5 M	D475 5M	95
490-5 M	-	98
500-5 M	D500 5M	100
520-5 M	D520 5M	104
525-5 M	-	105
535-5 M	D535 5M	107
540-5 M	D540 5M	108
550-5 M	D550 5M	110
560-5 M	D560 5M	112
565-5 M	D565 5M	113
575-5 M	D575 5M	115
580-5 M	-	116
600-5 M	D600 5M	120
610-5 M	-	122
615-5 M	D615 5M	123
620-5 M	D620 5M	124
625-5 M	D625 5M	125
630-5 M	D630 5M	126
635-5 M	D635 5M	127
640-5 M	D640 5M	128
645-5 M	D645 5M	129
650-5 M	-	130
-	D655 5M	131
665-5 M	D655 5M	133
670-5 M	D670 5M	134
-	D690 5M	138
-	D695 5M	139
700-5 M	D700 5M	140
710-5 M	D710 5M	142
720-5 M	-	144
740-5 M	D740 5M	148
-	D745 5M	149

5 mm Pitch

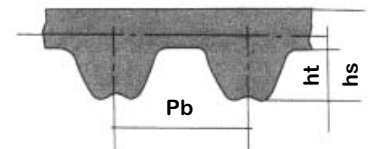
Belt Length	Belt Length Double Pitch	No. Teeth
750-5 M	D750 5M	150
755-5 M	D755 5M	151
-	D770 5M	154
775-5 M	-	155
800-5 M	D800 5M	160
-	D810 5M	162
825-5 M	D825 5M	165
-	D830 5M	166
835-5 M	D835 5M	167
-	D845 5M	169
850-5 M	D850 5M	170
860-5 M	D860 5M	172
-	D870 5M	174
890-5 M	D890 5M	178
900-5 M	D900 5M	180
-	D920 5M	184
925-5 M	D925 5M	185
-	D930 5M	186
935-5 M	D935 5M	187
940-5 M	D940 5M	188
950-5 M	D950 5M	190
-	D960 5M	192
965-5 M	-	193
-	D975 5M	195
980-5 M	-	196
1000-5 M	D1000 5M	200
-	D1025 5M	205
1035-5 M	-	207
1050-5 M	D1050 5M	210
1100-5 M	D1100 5M	220
1125-5 M	D1125 5M	225
1135-5 M	-	227
-	D1145 5M	229
1150-5 M	-	230
-	D1180 5M	236
-	D1185 5M	237
1200-5 M	D1200 5M	240
-	D1225 5M	245
1270-5 M	D1270 5M	254
-	D1280 5M	256
-	D1295 5M	259
1300-5 M	D1300 5M	260
-	D1350 5M	270
-	D1380 5M	276
-	D1400 5M	280
1420-5 M	D1420 5M	284
1425-5 M	-	285
1450-5 M	-	290
-	D1455 5M	291
1500-5 M	D1500 5M	300
1595-5 M	D1595 5M	319
1600-5 M	-	320
-	D1615 5M	323
1690-5 M	-	338
-	D1700 5M	340
1720-5 M	-	344
1790-5 M	-	358
1800-5 M	D1800 5M	360
1870-5 M	D1870 5M	374
1895-5 M	-	379
2000-5 M	D2000 5M	400

5 mm Pitch

Belt Length	Belt Length Double Pitch	No. Teeth
-	D2050 5M	410
2100-5 M	-	420
2110-5 M	-	422
2350-5 M	D2350 5M	470
2525-5 M	-	505
-	D3255 5M	651
-	D3750 5M	750

Note:

American Metric Corporation's Advanced Polymer Group has developed a new state-of-the-art revolutionary molding process whereby special profiles can be produced at very minimal cost. If you need it, We can produce it.



Also Available in RPP Tooth

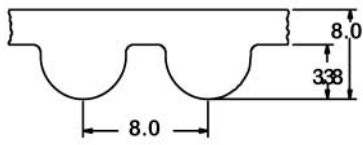
Ordering Example:

1205M9
 120----- Length (mm)
 5M----- Pitch
 9----- Width (mm)

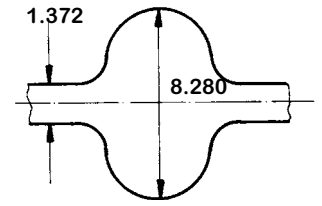
Ordering Example:

D4255M9
 D ----- Double
 425----- Length (mm)
 5M----- Pitch
 9----- Width (mm)

Standard Belt Width (mm)	9	15	25
--------------------------	---	----	----



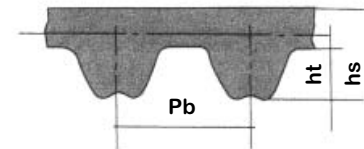
HTD® Synchronous Belts



8 mm Pitch

Belt Length	Belt Length Double Pitch	No. Teeth
288-8 M	-	36
320-8M	-	40
352-8 M	-	44
376-8M	-	47
416-8 M	-	52
424-8M	-	53
472-8 M	-	59
480-8M	D480 8M	60
512-8M	D512 8M	64
520-8 M	-	65
536-8M	D536 8M	67
560-8M	D560 8M	70
576-8M	D576 8M	72
600-8M	D600 8M	75
608-8M	-	76
624-8M	D624 8M	78
632-8M	D632 8M	79
640-8M	D640 8M	80
656-8M	D656 8M	82
680-8 M	D680 8M	85
712-8 M	D712 8M	89
720-8M	D720 8M	90
760-8M	D760 8M	95
776-8M	D776 8M	97
784-8M	D784 8M	98
800-8M	D800 8M	100
824-8 M	-	103
840-8M	D840 8M	105
848-8 M	-	106
856-8 M	D856 8M	107
-	D864 8M	108
-	D872 8M	109
880-8M	D880 8M	110
896-8 M	D896 8M	112
912-8M	D912 8M	114
920-8M	D920 8M	115
-	D928 8M	116
960-8M	D960 8M	120
-	D968 8M	121
976-8M	-	122
1000-8M	D1000 8M	125
1040-8M	D1040 8M	130
1056-8 M	D1056 8M	132
1064-8M	-	133
1080-8M	D1080 8M	135
1096-8 M	-	137
-	D1104 8M	138
1120-8M	D1120 8M	140
1128-8M	-	141
-	D1136 8M	142
1152-8M	D1152 8M	144
1160-8M	-	145
-	D1168 8M	146
1184-8 M	D1184 8M	148
1200-8M	D1200 8M	150
1216-8M	D1216 8M	152
1224-8M	D1224 8M	153
1248-8 M	D1248 8M	156
1256-8M	D1256 8M	157
1264-8M	D1264 8M	158
1280-8M	D1280 8M	160

Belt Length	Belt Length Double Pitch	No. Teeth
1304-8M	D1304 8M	163
-	D1312 8M	164
1328-8M	D1328 8M	166
1344-8 M	-	168
1360-8M	D1360 8M	170
-	D1392 8M	174
1400-8 M	D1400 8M	175
1424-8M	D1424 8M	178
1432-8M	-	179
1440-8M	D1440 8M	180
-	D1480 8M	185
1520-8M	D1520 8M	190
1552-8 M	-	194
-	D1576 8M	197
1600-8M	D1600 8M	200
1680-8 M	-	210
1696-8M	D1696 8M	212
1728-8 M	-	216
1760-8M	D1760 8M	220
-	D1792 8M	224
1800-8M	D1800 8M	225
-	D1896 8M	237
1904-8 M	D1904 8M	238
1936-8 M	-	242
2000-8M	D2000 8M	250
2104-8 M	D2104 8M	263
2080-8M	-	260
2240-8M	D2240 8M	280
2248-8M	D2248 8M	281
2272-8M	D2272 8M	284
-	D2392 8M	299
2400-8M	D2400 8M	300
2504-8 M	-	313
2600-8M	D2600 8M	325
2800-8M	D2800 8M	350
3008-8 M	-	376
3048-8 M	D3048 8M	381
-	D3120 8M	390
3280-8 M	-	410
3408-8 M	-	426
3600-8 M	-	450
3808-8 M	-	476
4400-8M	D4400 8M	550



Also Available in RPP Tooth

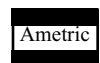
Standard Belt Width (mm)	20	30	50	85
--------------------------	----	----	----	----

Ordering Example:

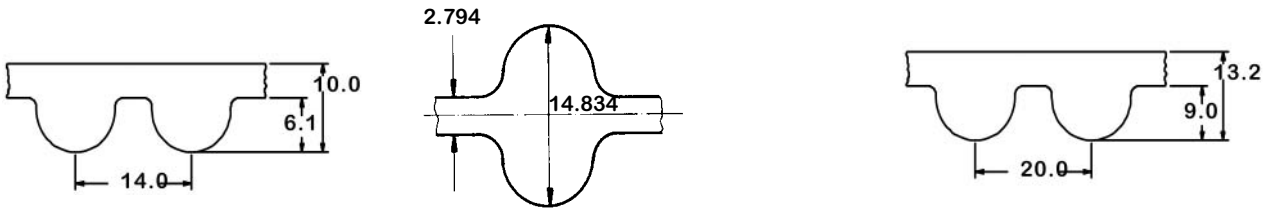
376M20
 376----- Length (mm)
 8M----- Pitch
 20----- Width (mm)

Ordering Example:

D480M20
 D ----- Double
 480----- Length (mm)
 8M----- Pitch
 20----- Width (mm)



HTD® Synchronous Belts



14 mm Pitch

Belt Length	Belt Length Double Pitch	No. Teeth
826-14M	-	59
924-14M	-	66
966-14M	D966 14M	69
-	D1036 14M	74
1092-14M	-	78
-	D1120 14M	80
1190-14M	D1190 14M	85
-	D1246 14M	89
1400-14M	D1400 14M	100
-	D1414 14M	101
-	D1540 14M	110
-	D1568 14M	112
1610-14M	D1610-14M	115
-	D1750 14M	125
1778-14M	D1778-14M	127
-	D1806 14M	129
-	D1848 14M	132
1890-14M	D1890-14M	135
-	D1960 14M	140
-	D2002 14M	143
2100-14M	D2100-14M	150
-	D2198 14M	157
-	D2240 14M	160
2310-14M	D2310-14M	165
2450-14M	D2450-14M	175
2590-14M	D2590-14M	185
2800-14M	D2800-14M	200
-	D3108 14M	222
3150-14M	D3150-14M	225
3360-14M	-	240
3500-14M	D3500 14M	250
3850-14M	-	275
4004-14M	-	286
4326-14M	-	309
4578-14M	-	327

20 mm Pitch

Belt Length	Belt Length Double Pitch	No. Teeth
2000-20M		100
2500-20M		125
3200-20M		160
3220-20M		161
3400-20M		170
3800-20M		190
4200-20M		210
4600-20M		230
5000-20M		250
5200-20M		260
5400-20M		270
5600-20M		280
5800-20M		290
6000-20M		300

Standard Belt Width (mm)	40	55	85	115	170
--------------------------	----	----	----	-----	-----

Standard Belt Width (mm)	115	170	230	290	340
--------------------------	-----	-----	-----	-----	-----

Ordering Example:

RPP Ordering Example:

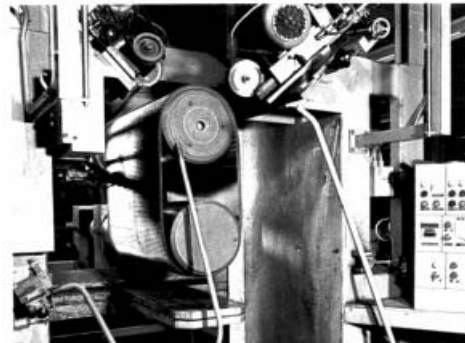
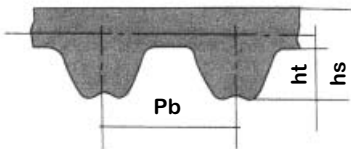
200020M115
 2000 ----- Length (mm)
 20M ----- Pitch
 115 ----- Width (mm)

120R5M15
 120 ----- Length (mm)
 R5M ----- Pitch
 15 ----- Width (mm)

Ordering Example:

82614M40
 826 ----- Length (mm)
 14M ----- Pitch
 40 ----- Width (mm)

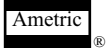
D161014M40
 D ----- Double Pitch
 1610 ----- Length (mm)
 14M ----- Pitch
 40 ----- Width (mm)



Produced in our South Carolina Plant

Also Available in RPP Tooth

American Metric® Corporation



GROUP: 093

1-093-110606