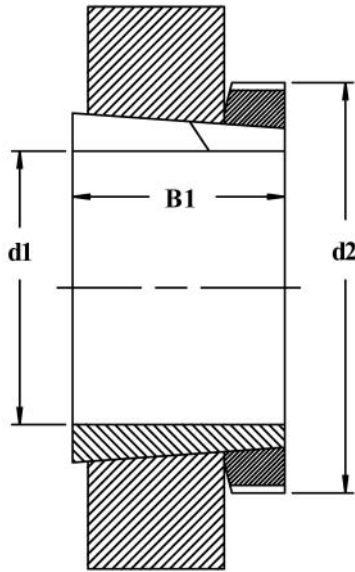
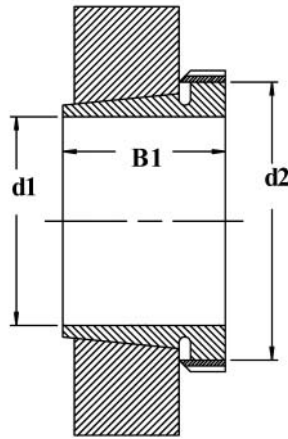


# Adapter Sleeves With Nut And Washer



Size	Weight kg	d1	Dimensions in mm	
			B1	d2
<b>H2 Series</b>				
H 204	0.041	17	24	32
H 205	0.070	20	26	38
H 206	0.099	25	27	45
H 207	0.130	30	29	52
H 208	0.170	35	31	58
H 209	0.230	40	33	65
H 210	0.270	45	35	70
H 211	0.310	50	37	75
H 212	0.350	55	38	80
H 213	0.400	60	40	85
H 214	0.590	60	41	92
H 215	0.710	65	43	98
H 216	0.880	70	46	105
H 217	1.000	75	50	110
H 218	1.200	80	52	120
H 219	1.320	85	55	125
H 220	1.500	90	58	130
H 221	1.700	95	60	140
H 222	1.900	100	63	145
H 3024	1.950	110	72	145
H 3026	2.850	115	80	155
H 3028	3.150	125	82	165
H 3030	3.900	135	87	180
H 3032	5.200	140	93	190
H 3034	6.000	150	101	200
H 3036	6.850	160	109	210
H 3038	7.450	170	112	220
H 3040	9.200	180	120	240
<b>H3 Series</b>				
H 304	0.045	17	28	32
H 305	0.075	20	29	38
H 306	0.110	25	31	45
H 307	0.140	30	35	52
H 308	0.190	35	36	58
H 309	0.250	40	39	65
H 310	0.300	45	42	70
H 311	0.340	50	45	75
H 312	0.390	55	47	80
H 313	0.460	60	50	85
H 314	0.720	60	52	92
H 315	0.830	65	55	98
H 316	1.000	70	59	105
H 317	1.200	75	63	110
H 318	1.350	80	65	120
H 319	1.550	85	68	125
H 320	1.700	90	71	130
H 321	2.000	95	74	140
H 322	2.200	100	77	145
H 3120	1.800	90	76	130
H 3122	2.250	100	81	145
H 3124	2.650	110	88	155
H 3126	3.650	115	92	165
H 3128	4.350	125	97	180
H 3130	5.500	135	111	195
H 3132	7.650	140	119	210
H 3134	8.400	150	122	220
H 3136	9.500	160	131	230
H 3138	11.000	170	141	240
H 3140	12.000	180	150	250
<b>H23 Series</b>				
H 2304	0.049	17	31	32
H 2305	0.087	20	35	38
H 2306	0.130	25	38	45
H 2307	0.170	30	43	52
H 2308	0.220	35	46	58
H 2309	0.280	40	50	65
H 2310	0.360	45	55	70
H 2311	0.420	50	59	75
H 2312	0.480	55	62	80
H 2313	0.550	60	65	85
H 2314	0.900	60	68	92
H 2315	1.050	65	73	98
H 2316	1.300	70	78	105
H 2317	1.450	75	82	110
H 2318	1.700	80	86	120
H 2319	1.900	85	90	125
H 2320	2.150	90	97	130
H 2322	2.750	100	105	145
H 2324	3.200	110	112	155
H 2326	4.600	115	121	165
H 2328	5.550	125	131	180
H 2330	6.600	135	139	195
H 2332	9.150	140	147	210
H 2334	10.000	150	154	220
H 2336	11.000	160	161	230
H 2338	12.500	170	169	240
H 2340	14.000	180	176	250

# Withdrawal Sleeves

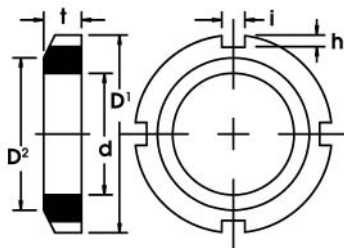


Size	Weight kg	Dimensions in mm		
		d1	B1	d2
<b>AH 30 ..., AH32</b>				
AH 308	0.090	35	29	45
AH 309	0.110	40	31	50
AH 310	0.160	45	35	60
AH 311	0.190	50	37	65
AH 312	0.220	55	40	70
AH 313	0.250	60	42	75
AH 314	0.280	65	43	80
AH 315	0.310	70	45	85
AH 316	0.370	75	48	90
AH 317	0.480	80	52	100
AH 318	0.520	85	53	105
AH 319	0.590	90	57	110
AH 320	0.660	95	59	115
AH 322	1.260	100	63	130
AH 3122	1.280	100	68	125
AH 3024	1.150	110	60	130
AH 3124	1.670	110	75	140
AH 3026	1.410	120	67	140
AH 3126	1.870	120	78	150
AH 3028	1.550	130	68	150
AH 3128	2.210	130	83	160
AH 3030	1.760	140	72	160
AH 3130	2.700	140	96	170
AH 3032	2.060	150	77	170
AH 3132	3.210	150	103	180
AH 3232	4.080	150	124	180
<b>AH 23 ..., AH 22</b>				
AH 2308	0.130	35	40	45
AH 2309	0.160	40	44	50
AH 2310	0.240	45	50	60
AH 2311	0.290	50	54	65
AH 2312	0.340	55	57	70
AH 2313	0.400	60	61	75
AH 2314	0.530	65	65	85
AH 2315	0.610	70	69	90
AH 2316	0.670	75	72	95
AH 2317	0.750	80	75	100
AH 2318	0.850	85	80	105
AH 2319	0.980	90	85	110
AH 2320	1.230	95	90	120
AH 2322	2.110	100	98	130
AH 2324	2.470	110	105	140
AH 2326	3.020	120	115	150
AH 2328	3.600	130	125	160
AH 2330	4.220	140	135	170
AH 2332	4.720	150	140	180

Size	Weight kg	Dimensions in mm		
		d1	B1	d2
<b>AHX30...,AHX32</b>				
AHX 310	0.140	45	35	55
AHX 311	0.160	50	37	60
AHX 312	0.190	55	40	65
AHX 313	0.230	60	42	70
AHX 317	0.430	80	52	95
AHX 318	0.460	85	53	100
AHX 3218	0.580	85	63	100
AHX 319	0.530	90	57	105
AHX 320	0.590	95	59	110
AHX 3120	0.650	95	64	110
AHX 3220	0.770	95	73	110
AHX 322	0.710	105	63	120
AHX 3122	0.760	105	68	120
AHX 3222	1.040	105	82	125
AHX 3024	0.750	115	60	130
AHX 3124	0.950	115	75	130
AHX 3224	1.300	115	90	135
AHX 3026	0.930	125	67	140
AHX 3126	1.080	125	78	140
AHX 3226	1.580	125	98	145
AHX 3028	1.010	135	68	150
AHX 3128	1.260	135	83	150
AHX 3228	1.840	135	104	155
AHX 3030	1.120	145	72	160
AHX 3130	1.790	145	96	165
AHX 3230	2.200	145	114	165
<b>AHX 23</b>				
AHX 2310	0.210	45	50	55
AHX 2311	0.250	50	54	60
AHX 2312	0.300	55	58	65
AHX 2313	0.370	60	61	70
AHX 2314	0.470	65	64	80
AHX 2315	0.530	70	68	85
AHX 2316	0.600	75	71	90
AHX 2317	0.670	80	74	95
AHX 2318	0.780	85	79	100
AHX 2319	0.880	90	85	105
AHX 2320	1.000	95	90	110
AHX 2322	1.350	105	98	125
AHX 2324	1.600	115	105	135
AHX 2326	1.970	125	115	145
AHX 2328	2.330	135	125	155
AHX 2330	2.820	145	135	165

# Nuts For Shafts And Withdraw Sleeves (Series KM)

## DIN 981 - ISO 2982

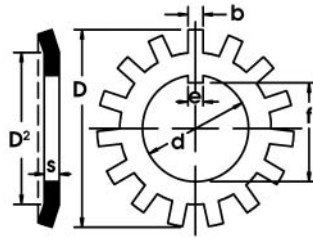


Type	Weight kg	Thread	d	D <sup>1</sup>	D <sup>2</sup>	t	i	h	For Washer
KM 0	0.005	M10x0.75	10	18	13.5	4	3	2	MB 0
KM 1	0.007	M12x1	12	22	17	4	3	2	MB 1
KM 2	0.010	M15x1	15	25	21	5	4	2	MB 2
KM 3	0.013	M17x1	17	28	24	5	4	2	MB 3
KM 4	0.019	M20x1	20	32	26	6	4	2	MB 4
KM 5	0.025	M25x1.5	25	38	32	7	5	2	MB 5
KM 6	0.043	M30x1.5	30	45	38	7	5	2	MB 6
KM 7	0.053	M35x1.5	35	52	44	8	5	2	MB 7
KM 8	0.085	M40x1.5	40	58	50	9	6	2.5	MB 8
KM 9	0.120	M45x1.5	45	65	56	10	6	2.5	MB 9
KM 10	0.150	M50x1.5	50	70	61	11	6	2.5	MB 10
KM 11	0.160	M55x2	55	75	67	11	7	3	MB 11
KM 12	0.170	M60x2	60	80	73	11	7	3	MB 12
KM 13	0.200	M65x2	65	85	79	12	7	3	MB 13
KM 14	0.240	M70x2	70	92	85	12	8	3.5	MB 14
KM 15	0.290	M75x2	75	98	90	13	8	3.5	MB 15
KM 16	0.400	M80x2	80	105	95	15	8	3.5	MB 16
KM 17	0.450	M85x2	85	110	102	16	8	3.5	MB 17
KM 18	0.560	M90x2	90	120	108	16	10	4	MB 18
KM 19	0.660	M95x2	95	125	113	17	10	4	MB 19
KM 20	0.700	M100x2	100	130	120	18	10	4	MB 20
KM 21	0.850	M105x2	105	140	126	18	12	5	MB 21
KM 22	0.970	M110x2	110	145	133	19	12	5	MB 22
KM 23	1.010	M115x2	115	150	137	19	12	5	MB 23
KM 24	1.080	M120x2	120	155	138	20	12	5	MB 24
KM 25	1.190	M125x2	125	160	148	21	12	5	MB 25
KM 26	1.250	M130x2	130	165	149	21	12	5	MB 26
KM 27	1.550	M135x2	135	175	160	22	14	6	MB 27
KM 28	1.560	M140x2	140	180	160	22	14	6	MB 28
KM 29	2.000	M145x2	145	190	172	24	14	6	MB 29
KM 30	2.030	M150x2	150	195	171	24	14	6	MB 30
KM 31	2.210	M155x3	155	200	182	25	16	7	MB 31
KM 32	2.590	M160x3	160	210	182	25	16	7	MB 32
KM 33	2.430	M165x3	165	210	193	26	16	7	MB 33
KM 34	2.800	M170x3	170	220	193	26	16	7	MB 34
KM 36	3.070	M180x3	180	230	203	27	18	8	MB 36
KM 38	3.390	M190x3	190	240	214	28	18	8	MB 38
KM 40	3.690	M200x3	200	250	226	29	18	8	MB 40

Also available in stainless steel.

# Locking Washers For Nuts On Shafts (Series MB)

## DIN 5406 - ISO 2982



Type	Weight g(kg/100)	d	D	D <sup>2</sup>	e	f	s	b	For Nut
MB 0	1.30	10	21	13.5	3	8.5	1.00	3	KM 0
MB 1	1.90	12	25	17	3	10.5	1.00	3	KM 1
MB 2	2.50	15	28	21	4	13.5	1.00	4	KM 2
MB 3	3.10	17	32	24	4	15.5	1.00	4	KM 3
MB 4	3.50	20	36	26	4	18.5	1.00	4	KM 4
MB 5	6.40	25	42	32	5	23.0	1.25	5	KM 5
MB 6	7.80	30	49	38	5	27.5	1.25	5	KM 6
MB 7	10.40	35	57	44	6	32.5	1.25	5	KM 7
MB 8	12.30	40	62	50	6	37.5	1.25	6	KM 8
MB 9	15.20	45	69	56	6	42.5	1.25	6	KM 9
MB 10	16.00	50	74	61	6	47.5	1.25	6	KM 10
MB 11	19.60	55	81	67	8	52.5	1.25	7	KM 11
MB 12	25.30	60	86	73	8	57.5	1.50	7	KM 12
MB 13	29.00	65	92	79	8	62.5	1.50	7	KM 13
MB 14	33.40	70	98	85	8	66.5	1.50	8	KM 14
MB 15	35.60	75	104	90	8	71.5	1.50	8	KM 15
MB 16	46.40	80	112	95	10	76.5	1.75	8	KM 16
MB 17	52.40	85	119	102	10	81.5	1.75	8	KM 17
MB 18	62.30	90	126	108	10	86.5	1.75	10	KM 18
MB 19	67.00	95	133	113	10	91.5	1.75	10	KM 19
MB 20	76.50	100	142	120	12	96.5	1.75	10	KM 20
MB 21	82.60	105	145	126	12	100.5	1.75	12	KM 21
MB 22	94.00	110	154	133	12	105.5	1.75	12	KM 22
MB 23	108.00	115	159	137	12	110.5	2.00	12	KM 23
MB 24	105.00	120	164	138	14	115.0	2.00	12	KM 24
MB 25	118.00	125	170	148	14	120.0	2.00	12	KM 25
MB 26	113.00	130	175	149	14	125.0	2.00	12	KM 26
MB 27	144.00	135	185	160	14	130.0	2.00	14	KM 27
MB 28	142.00	140	192	160	16	135.0	2.00	14	KM 28
MB 29	168.00	145	202	172	16	140.0	2.00	14	KM 29
MB 30	155.00	150	205	171	16	145.0	2.00	14	KM 30
MB 31	209.00	155	212	182	16	147.5	2.50	16	KM 31
MB 32	222.00	160	217	182	18	154.0	2.50	16	KM 32
MB 33	241.00	165	222	193	18	157.5	2.50	16	KM 33
MB 34	247.00	170	232	193	18	164.0	2.50	16	KM 34
MB 36	268.00	180	242	203	20	174.0	2.50	18	KM 36
MB 38	278.00	190	252	214	20	184.0	2.50	18	KM 38
MB 40	293.00	200	262	226	20	194.0	2.50	18	KM 40

Also available in stainless steel.