



Inch O-Rings

(In Standard and Food Grade)
NBR 70 Buna Nitrile
NBR 90 Buna Nitrile
EPDM 70 Ethylene-Propylene
Viton 75 Fluorocarbon
NBR 90 Buna Nitrile Backup Rings



AS 568 A Number	ID Inch	OD Inch	W Inch
-001	1/32	3/32	1/32
-002	3/64	9/64	3/64
-003	1/16	3/16	1/16
-004	5/64	13/64	1/16
-005	3/32	7/32	1/16
-006	1/8	1/4	1/16
-007	5/32	9/32	1/16
-008	3/16	5/16	1/16
-009	7/32	11/32	1/16
-010	1/4	3/8	1/16
-011	5/16	7/16	1/16
-012	3/8	1/2	1/16
-013	7/16	9/16	1/16
-014	1/2	5/8	1/16
-015	9/16	11/16	1/16
-016	5/8	3/4	1/16
-017	11/16	13/16	1/16
-018	3/4	7/8	1/16
-019	13/16	15/16	1/16
-020	7/8	1	1/16
-021	15/16	1-1/16	1/16
-022	1	1-1/8	1/16
-023	1-1/16	1-3/16	1/16
-024	1-1/8	1-1/4	1/16
-025	1-3/16	1-5/16	1-16
-026	1-1/4	1-3/8	1/16
-027	1-5/16	1-7/16	1/16
-028	1-3/8	1-1/2	1/16
-029	1-1/2	1-5/8	1/16
-030	1-5/8	1-3/4	1/16
-031	1-3/4	1-7/8	1/16
-032	1-7/8	2	1/16
-033	2	2-1/8	1/16
-034	2-1/8	2-1/4	1/16
-035	2-1/4	2-3/8	1/16
-036	2-3/8	2-1/2	1/16
-037	2-1/2	2-5/8	1/16
-038	2-5/8	2-3/4	1/16
-039	2-3/4	2-7/8	1/16
-040	2-7/8	3	1/16
-041	3	3-1/8	1/16
-042	3-1/4	3-3/8	1/16
-043	3-1/2	3-5/8	1/16
-044	3-3/4	3-7/8	1/16
-045	4	4-1/8	1/16
-046	4-1/4	4-3/8	1/16
-047	4-1/2	4-5/8	1/16
-048	4-3/4	4-7/8	1/16
-049	5	5-1/8	1/16
-050	5-1/4	5-3/8	1/16
-102	1/16	1/4	3/32
-103	3/32	9/32	3/32
-104	1/8	5/16	3/32
-105	5/32	11/32	3/32
-106	3/16	3/8	3/32
-107	7/32	13/32	3/32
-108	1/4	7/16	3/32
-109	5/16	1/2	3/32
-110	3/8	9/16	3/32
-111	7/16	5/8	3/32
-112	1/2	11/16	3/32
-113	9/16	3/4	3/32
-114	5/8	13/16	3/32
-115	11/16	7/8	3/32
-116	3/4	15/16	3/32

AS 568 A Number	ID Inch	OD Inch	W Inch
-117	13/16	1	3/32
-118	7/8	1-1/16	3/32
-119	15/16	1-1/8	3/32
-120	1	1-3/16	3/32
-121	1-1/16	1-1/4	3/32
-122	1-1/8	1-5/16	3/32
-123	1-3/16	1-3/8	3/32
-124	1-1/4	1-7/16	3/32
-125	1-5/16	1-1/2	3/32
-126	1-3/8	1-9/16	3/32
-127	1-7/16	1-5/8	3/32
-128	1-1/2	1-11/16	3/32
-129	1-9/16	1-3/4	3/32
-130	1-5/8	1-13/16	3/32
-131	1-11/16	1-7/8	3/32
-132	1-3/4	1-15/16	3/32
-133	1-13/16	2	3/32
-134	1-7/8	2-1/16	3/32
-135	1-15/16	2-1/8	3/32
-136	2	2-3/16	3/32
-137	2-1/16	2-1/4	3/32
-138	2-1/8	2-5/16	3/32
-139	2-3/16	2-3/8	3/32
-140	2-1/4	2-7/16	3/32
-141	2-5/16	2-1/2	3/32
-142	2-3/8	2-9/16	3/32
-143	2-7/16	2-5/8	3/32
-144	2-1/2	2-11/16	3/32
-145	2-9/16	2-3/4	3/32
-146	2-5/8	2-13/16	3/32
-147	2-11/16	2-7/8	3/32
-148	2-3/4	2-15/16	3/32
-149	2-13/16	3	3/32
-150	2-7/8	3-1/16	3/32
-151	3	3-3/16	3/32
-152	3-1/4	3-7/16	3/32
-153	3-1/2	3-11/16	3/32
-154	3-3/4	3-15/16	3/32
-155	4	4-3/16	3/32
-156	4-1/4	4-7/16	3/32
-157	4-1/2	4-11/16	3/32
-158	4-3/4	4-15/16	3/32
-159	5	5-3/16	3/32
-160	5-1/4	5-7/16	3/32
-161	5-1/2	5-11/16	3/32
-162	5-3/4	5-15/16	3/32
-163	6	6-3/16	3/32
-164	6-1/4	6-7/16	3/32
-165	6-1/2	6-11/16	3/32
-166	6-3/4	6-15/16	3/32
-167	7	7-3/16	3/32
-168	7-1/4	7-7/16	3/32
-169	7-1/2	7-11/16	3/32
-170	7-3/4	7-15/16	3/32
-171	8	8-3/16	3/32
-172	8-1/4	8-7/16	3/32
-173	8-1/2	8-11/16	3/32
-174	8-3/4	8-15/16	3/32
-175	9	9-3/16	3/32
-176	9-1/4	9-7/16	3/32
-177	9-1/2	9-11/16	3/32
-178	9-3/4	9-15/16	3/32
-201	3/16	7/16	1/8
-202	1/4	1/2	1/8
-203	5/16	9/16	1/8

AS 568 A Number	ID Inch	OD Inch	W Inch
-204	3/8	5/8	1/8
-205	7/16	11/16	1/8
-206	1/2	3/4	1/8
-207	9/16	13/16	1/8
-208	5/8	7/8	1/8
-209	11/16	15/16	1/8
-210	3/4	1	1/8
-211	13/16	1-1/16	1/8
-212	7/8	1-1/8	1/8
-213	15/16	1-3/16	1/8
-214	1	1-1/4	1/8
-215	1-1/16	1-5/16	1/8
-216	1-1/8	1-3/8	1/8
-217	1-3/16	1-7/16	1/8
-218	1-1/4	1-1/2	1/8
-219	1-5/16	1-9/16	1/8
-220	1-3/8	1-5/8	1/8
-221	1-7/16	1-11/16	1/8
-222	1-1/2	1-3/4	1/8
-223	1-5/8	1-7/8	1/8
-224	1-3/4	2	1/8
-225	1-7/8	2-1/8	1/8
-226	2	2-1/4	1/8
-227	2-1/8	2-3/8	1/8
-228	2-1/4	2-1/2	1/8
-229	2-3/8	2-5/8	1/8
-230	2-1/2	2-3/4	1/8
-231	2-5/8	2-7/8	1/8
-232	2-3/4	3	1/8
-233	2-7/8	3-1/8	1/8
-234	3	3-1/4	1/8
-235	3-1/8	3-3/8	1/8
-236	3-1/4	3-1/2	1/8
-237	3-3/8	3-5/8	1/8
-238	3-1/2	3-3/4	1/8
-239	3-5/8	3-7/8	1/8
-240	3-3/4	4	1/8
-241	3-7/8	4-1/8	1/8
-242	4	4-1/4	1/8
-243	4-1/8	4-3/8	1/8
-244	4-1/4	4-1/2	1/8
-245	4-3/8	4-5/8	1/8
-246	4-1/2	4-3/4	1/8
-247	4-5/8	4-7/8	1/8
-248	4-3/4	5	1/8
-249	4-7/8	5-1/8	1/8
-250	5	5-1/4	1/8
-251	5-1/8	5-3/8	1/8
-252	5-1/4	5-1/2	1/8
-253	5-3/8	5-5/8	1/8
-254	5-1/2	5-3/4	1/8
-255	5-5/8	5-7/8	1/8
-256	5-3/4	6	1/8
-257	5-7/8	6-1/8	1/8
-258	6	6-1/4	1/8
-259	6-1/4	6-1/2	1/8
-260	6-1/2	6-3/4	1/8
-261	6-3/4	7	1/8
-262	7	7-1/4	1/8
-263	7-1/4	7-1/2	1/8
-264	7-1/2	7-3/4	1/8
-265	7-3/4	8	1/8
-266	8	8-1/4	1/8
-267	8-1/4	8-1/2	1/8
-268	8-1/2	8-3/4	1/8



Inch O-Rings

(In Standard and Food Grade)
NBR 70 Buna Nitrile
NBR 90 Buna Nitrile
EPDM 70 Ethylene-Propylene
Viton 75 Fluorocarbon
NBR 90 Buna Nitrile Backup Rings



AS 568 A Number	ID Inch	OD Inch	W Inch
-269	8-3/4	9	1/8
-270	9	9-1/4	1/8
-271	9-1/4	9-1/2	1/8
-272	9-1/2	9-3/4	1/8
-273	9-3/4	10	1/8
-274	10	10-1/4	1/8
-275	10-1/2	10-3/4	1/8
-276	11	11-1/4	1/8
-277	11-1/2	11-3/4	1/8
-278	12	12-1/4	1/8
-279	13	13-1/4	1/8
-280	14	14-1/4	1/8
-281	15	15-1/4	1/8
-282	16	16-1/4	1/8
-283	17	17-1/4	1/8
-284	18	18-1/4	1/8
-309	7/16	13/16	3/16
-310	1/2	7/8	3/16
-311	9/16	15/16	3/16
-312	5/8	1	3/16
-313	11/16	1-1/16	3/16
-314	3/4	1-1/8	3/16
-315	13/16	1-3/16	3/16
-316	7/8	1-1/4	3/16
-317	15/16	1-5/16	3/16
-318	1	1-3/8	3/16
-319	1-1/16	1-7/16	3/16
-320	1-1/8	1-1/2	3/16
-321	1-3/16	1-9/16	3/16
-322	1-1/4	1-5/8	3/16
-323	1-5/16	1-11/16	3/16
-324	1-3/8	1-3/4	3/16
-325	1-1/2	1-7/8	3/16
-326	1-5/8	2	3/16
-327	1-3/4	2-1/8	3/16
-328	1-7/8	2-1/4	3/16
-329	2	2-3/8	3/16
-330	2-1/8	2-1/2	3/16
-331	2-1/4	2-5/8	3/16
-332	2-3/8	2-3/4	3/16
-333	2-1/2	2-7/8	3/16
-334	2-5/8	3	3/16
-335	2-3/4	3-1/8	3/16
-336	2-7/8	3-1/4	3/16
-337	3	3-3/8	3/16
-338	3-1/8	3-1/2	3/16
-339	3-1/4	3-5/8	3/16
-340	3-3/8	3-3/4	3/16
-341	3-1/2	3-7/8	3/16
-342	3-5/8	4	3/16
-343	3-3/4	4-1/8	3/16
-344	3-7/8	4-1/4	3/16
-345	4	4-3/8	3/16
-346	4-1/8	4-1/2	3/16
-347	4-1/4	4-5/8	3/16
-348	4-3/8	4-3/4	3/16
-349	4-1/2	4-7/8	3/16
-350	4-5/8	5	3/16
-351	4-3/4	5-1/8	3/16
-352	4-7/8	5-1/4	3/16
-353	5	5-3/8	3/16
-354	5-1/8	5-1/2	3/16
-355	5-1/4	5-5/8	3/16
-356	5-3/8	5-3/4	3/16
-357	5-1/2	5-7/8	3/16

AS 568 A Number	ID Inch	OD Inch	W Inch
-358	5-5/8	6	3/16
-359	5-3/4	6-1/8	3/16
-360	5-7/8	6-1/4	3/16
-361	6	6-3/8	3/16
-362	6-1/4	6-5/8	3/16
-363	6-1/2	6-7/8	3/16
-364	6-3/4	7-1/8	3/16
-365	7	7-3/8	3/16
-366	7-1/4	7-5/8	3/16
-367	7-1/2	7-7/8	3/16
-368	7-3/4	8-1/8	3/16
-369	8	8-3/8	3/16
-370	8-1/4	8-5/8	3/16
-371	8-1/2	8-7/8	3/16
-372	8-3/4	9-1/8	3/16
-373	9	9-3/8	3/16
-374	9-1/4	9-5/8	3/16
-375	9-1/2	9-7/8	3/16
-376	9-3/4	10-1/8	3/16
-377	10	10-3/8	3/16
-378	10-1/2	10-7/8	3/16
-379	11	11-3/8	3/16
-380	11-1/2	11-7/8	3/16
-381	12	12-3/8	3/16
-382	13	13-3/8	3/16
-383	14	14-3/8	3/16
-384	15	15-3/8	3/16
-385	16	16-3/8	3/16
-386	17	17-3/8	3/16
-387	18	18-3/8	3/16
-388	19	19-3/8	3/16
-389	20	20-3/8	3/16
-390	21	21-3/8	3/16
-391	22	22-3/8	3/16
-392	23	23-3/8	3/16
-393	24	24-3/8	3/16
-394	25	25-3/8	3/16
-395	26	26-3/8	3/16
-425	4-1/2	5	1/4
-426	4-5/8	5-1/8	1/4
-427	4-3/4	5-1/4	1/4
-428	4-7/8	5-3/8	1/4
-429	5	5-1/2	1/4
-430	5-1/8	5-5/8	1/4
-431	5-1/4	5-3/4	1/4
-432	5-3/8	5-7/8	1/4
-433	5-1/2	6	1/4
-434	5-5/8	6-1/8	1/4
-435	5-3/4	6-1/4	1/4
-436	5-7/8	6-3/8	1/4
-437	6	6-1/2	1/4
-438	6-1/4	6-3/4	1/4
-439	6-1/2	7	1/4
-440	6-3/4	7-1/4	1/4
-441	7	7-1/2	1/4
-442	7-1/4	7-3/4	1/4
-443	7-1/2	8	1/4
-444	7-3/4	8-1/4	1/4
-445	8	8-1/2	1/4
-446	8-1/2	9	1/4
-447	9	9-1/2	1/4
-448	9-1/2	10	1/4
-449	10	10-1/2	1/4
-450	10-1/2	11	1/4
-451	11	11-1/2	1/4

AS 568 A Number	ID Inch	OD Inch	W Inch
-452	11-1/2	12	1/4
-453	12	12-1/2	1/4
-454	12-1/2	13	1/4
-455	13	13-1/2	1/4
-456	13-1/2	14	1/4
-457	14	14-1/2	1/4
-458	14-1/2	15	1/4
-459	15	15-1/2	1/4
-460	15-1/2	16	1/4
-461	16	16-1/2	1/4
-462	16-1/2	17	1/4
-463	17	17-1/2	1/4
-464	17-1/2	18	1/4
-465	18	18-1/2	1/4
-466	18-1/2	19	1/4
-467	19	19-1/2	1/4
-468	19-1/2	20	1/4
-469	20	20-1/2	1/4
-470	21	21-1/2	1/4
-471	22	22-1/2	1/4
-472	23	23-1/2	1/4
-473	24	24-1/2	1/4
-474	25	25-1/2	1/4
-475	26	26-1/2	1/4
-901	TUBE	3/32	-
-902	TUBE	1/8	-
-903	TUBE	3/16	-
-904	TUBE	1/4	-
-905	TUBE	5/16	-
-906	TUBE	3/8	-
-907	TUBE	7/16	-
-908	TUBE	1/2	-
-909	TUBE	9/16	-
-910	TUBE	5/8	-
-911	TUBE	11/16	-
-912	TUBE	3/4	-
-913	TUBE	13/16	-
-914	TUBE	7/8	-
-916	TUBE	1	-
-918	TUBE	1-1/8	-
-920	TUBE	1-1/4	-
-924	TUBE	1-1/2	-
-928	TUBE	1-3/4	-
-932	TUBE	2	-

Part Number Examples:

NBR 70 Buna Nitrile

013 NBR 70

013 NBR 70 FDA

NBR 90 Buna Nitrile

112 NBR 90

112 NBR 90 FDA

EPDM 70 Ethylene-Propylene

212 EPDM 70

212 EPDM 70 FDA

Viton 75 Fluorocarbon

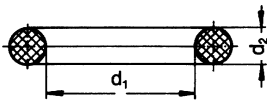
130 VITON 75

130 VITON 75 FDA

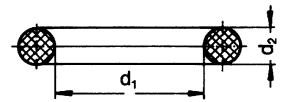
NBR 90 Buna Nitrile Backup Rings

029 NBR 70 BR

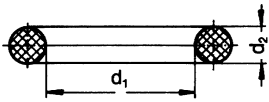




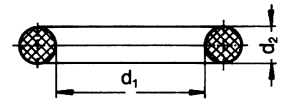
Nitrile (NB-70) O-Rings (70 Shore A Durometer)



Inside Diameter x Cross Section									
1.5x1.5	7.8x1.9	11.91x2.62	16x1.5	21x3	27.1x1.6	35x3	42x2	50x5	60x3
1.78x1.78			16x2	21x3.5	27.3x2.4	35x3.5	42x2.5	50x6	60x3.5
	8x1	12x1	16x2.5	21.3x2.4		35x4	42x3	50.2x3	60x4
2x1	8x1.25	12x1.5	16x3	21.5x1.5	28x2	35x5	42x3.5		60x5
2.5x1.5	8x1.5	12x1.7	16x3.5	21.6x2.4	28x2.5	35.1x1.6	42x4	51x2.5	60x5.7
2.5x1.6	8x1.9	12x2	16x4		28x3	35.2x3	42x4.5	51x4	60x7
2.54x1.02	8x2	12x2.5	16.3x2.4	22x1.5	28x3.5	35.2x5.7	42x5	51x5.5	
2.6x1.2	8x2.4	12x3	16.6x2.4	22x2	28x4	35.5x2	42.2x3	51.2x5.7	61x2
2.6x1.9	8x2.5	12x3.5		22x2.5	28x5				61x2.5
2.8x1.6	8x3	12x4	17x1	22x3		36x1.5	43x1.5	52x2	
	8x3.5	12x4.5	17x1.5	22x3.5	29x2	36x2	43x2	52x2.5	62x2
3x1	8x4	12.1x1.6	17x2	22x4	29x3	36x2.5	43x3.5	52x3	62x3
3x1.5	8.3x2.4	12.3x2.1	17x2.5	22x5	29x3.5	36x3		52x3.5	62x4
3x2	8.5x1	12.3x2.4	17x3	22.1x1.6	29x6	36x3.5	44x2	52x4	62x5
3.1x1.6	8.5x1.5	12.37x2.62	17x3.5	22.2x3	29.2x3	36x4	44x2.5	52.2x5.7	62x6
3.2x1.8	8.6x2.4	12.5x1.5	17x4		29.5x2	36.2x3	44x3	52.39x3.53	62.2x3
3.3x2.4	8.73x1.78	12.5x2.5	17.3x2.4	23x1	29.5x3	36.2x5.7	44x3.5		
3.5x1.5	8.8x1.9	12.6x2.4	17.5x1.5	23x1.5	29.6x2.4		44x4	53x2	63x2
3.9x1.8	8.9x1.9		17.6x2.4	23x2		37x1.5	44.2x3	53x2.5	63x2.5
	8.9x2.7	13x1	17.8x2.4	23x2.5	30x1.5	37x2	44.45x3.53	53x3	63x3.5
4x1		13x1.25	17.96x2.62	23x3	30x2	37x2.5	44.5x3	53x4	63x4
4x1.5	9x1	13x1.5		23x3.5	30x2.5	37x3		53x4.5	63x5.5
4x1.75	9x1.5	13x2	18x1	23x4	30x3	37x3.5	45x1.5	53x5	
4x2	9x2	13x2.5	18x1.5	23x5	30x3.5	37x4	45x2	53.97x3.53	64x2
4x2.5	9x2.5	13x3	18x2	23.17x5.33	30x4	37.1x1.6	45x2.5		64x3
4x3	9x3	13x3.5	18x2.5	23.3x2.4	30x5	37.2x3	45x3	54x3	64x4
4.1x1.6	9x3.5	13x4	18x3	23.4x3.53	30.2x3	37.2x5.7	45x3.5	54x4	64x6
4.3x2.4	9x4	13x5	18x3.5			37.5x3	45x4	54.3x5.7	64.2x5.7
4.5x1.5	9.1x1.6	13.1x1.6	18x4	24x2	31x1.5	37.69x3.53	45x5	54.5x3	64.5x3
4.6x2	9.19x2.62	13.1x2.62	18x5	24x2.5	31x2		45x7		64.6x2.4
4.7x1.6	9.25x1.78	13.3x2.4	18.1x1.6	24x3	31x3	38x2	45.84x1.78	55x1.2	
4.9x1.9	9.3x2.4	13.5x1	18.2x3	24x3.5	31x3.5	38x2.5		55x2	65x2
	9.5x1	13.5x2	18.3x2.4	24x4	31x4	38x3	46x2	55x2.5	65x2.5
	9.5x1.5	13.5x2.5	18.3x3.6	24x5.5	31x4.5	38x3.5	46x3	55x3	65x3
5x1	9.5x1.6	13.8x2.4	18.4x2.7	24.2x3	31.2x3	38x4	46x3.5	55x3.5	65x4
5x1.5	9.5x2.5		18.6x2.4	24.3x2.4		38x4.5		55x4	65x5
5x2	9.52x1.78	14x1	18.66x3.53	24.5x3	32x1.5	38x5	47x2	55x5	
5x2.5	9.6x2.4	14x1.5			32x2	38x8	47x2.5	55.24x2.62	66x2
5x3	9.62x2.4	14x1.78	19x1.5	25x1	32x2.5		47x3	55.3x5.7	66x3
5.3x2.4	9.92x2.62	14x2	19x2	25x1.5	32x3	39x2	47x3.5		66x4
5.5x1.5		14x2.5	19x2.5	25x2	32x3.5	39x2.5	47x4	56x1.5	
5.6x2.4	10x1	14x2.7	19x3	25x2.5	32x4	39x3	47x5.5	56x2	67x2.5
5.7x1.9	10x1.5	14x3	19x3.5	25x3	32x5	39x3.5	47x6	56x2.5	67x3
	10x2	14x4	19x4	25x3.5	32.2x3	39.2x3	47.63x3.53	56x3	67x4
6x1	10x2.2	14x1.6	19.2x3	25x4	32.5x3	39.2x5.7		56x3.5	67.2x5.7
6x1.5	10x2.5	14.1x1.6	19.2x3	25x5		39.45x1.78	48x1	56x4	
6x2	10x3	14.3x2.4	19.3x2.4	25x6	33x1.5	39.5x2	48x2	56x5	68x2
6x2.5	10x3.5	14.5x3	19.5x1.78	25x8	33x2	39.5x2.5	48x2.5	56.2x3	68x2.5
6x3	10x4	14.6x2.4	19.6x2.4	25x8	33x2.5	39.5x3	48x3		68x3
6.3x2.4	10x5	14.8x2.4	19.99x5.33	25.1x1.6	33x3		48x3.5	57x3	68x4
6.35x1.78	10.1x1.6			25.3x2.4	33x3.5	40x1.5	48x4	57x3.5	
6.4x1.9	10.3x2.4	15x1	20x1	25.5x3	33x4	40x2	48x5	57x4	69x3
6.75x1.78	10.5x1.5	15x1.5	20x1.5		33x5	40x2.5	48x6	57.2x3	69.2x5.7
6.8x1.9	10.5x2.7	15x1.78	20x2	26x1.2	33.3x2.4	40x3			69.44x3.53
	10.82x1.78	15x2	20x2.5	26x1.5	26x2	40x3.5	49x1.5	58x1.5	69.5x3
7x1		15x2.5	20x3	26x2	26x2.5	40x4	49x3	58x2	69.6x2.4
7x1.5	11x1	15x3	20x3.5	26x3	26x3	40x4.5	49x3.5	58x2.5	
7x2	11x1.5	15x3.5	20x4	26x3.5	26x2.3	40x5	49x4.5	58x3	70x2
7x2.5	11x1.9	15x4	20x5	26x4	26.2x3	40x5.5	49.2x5.7	58x3.5	70x2.5
7x3	11x2	15x4.5		26.2x3	26.58x3.53	40x6x3.2	49.21x3.53	58.74x3.53	70x3
7x4	11x2.5	15x5	20.1x1.6	26.58x3.53			49.5x3		70x3.5
7.1x1.6	11x3	15.08x2.62	20.2x3		27x1.5	41x1.5		59x3	70x4
7.2x1.9	11x3.5	15.3x2.4	20.3x2.4	27x2	27x2	41x2	50x1.5	59.2x5.7	70x5
7.3x2.4	11.1x1.6	15.5x2.5	20.5x1.8	27x2.5	27x3	41x3	50x2	59.5x3	70x5.5
7.5x1.3	11.3x2.4	15.6x1.78	20.63x2.62	27x3	27x3.5	41x3.5	50x2.5	59.7x5.7	70x5.7
7.5x1.5	11.5x1.5	15.88x2.62		27x4	27x5	41x4	50x3		
7.5x1.8	11.5x2.5		21x1.5	27x4	27x5	41.5x3	50x3.5	60x2	71x1.5
7.5x2	11.5x3	16x1	21x2	27x5	27x6		50x4	60x2.5	71x3
7.5x2.5	11.8x2.4	16x1.25	21x2.5				50x4.5		71x4



Nitrile (NB-70) O-Rings (70 Shore A Durometer)



Inside Diameter x Cross Section								
72x1.5	85x2.5	100x5	119.5x3	140x5	175x3	219.5x3		
72x2	85x3	100x5.33		140x5.7			340x3.5	
72x3	85x4	100x6	120x2	140x8	175x5	220x3	340x4	
72x4	85x5		120x2.5		175x6	220x3.5		
72x9	85x6	102x3	120x3	142x3	175x7	220x8	349.2x5.7	
72.2x5.7		102x4	120x3.2	142x4				
	86x2		120x3.5		177x3	224x3.8	367x3.5	
73x2.5	86x2.5	103x3	120x4	144x3				
73x3.5	86x3		120x5	144.2x5.7	179x3	225x6	370x5	
73x5	86x4	104x2.5	120.7x5.33	144.3x5.7				
73.02x3.53	86x8	104x4		144.5x3	180x3	228x4	380x8	
		104x5	122x3		180x4			
74x2	88x3.5	104.2x5.7		145x2.5	180x5	229x6	429x6	
74x3	88x6	104.5x3	123x3	145x3	180x5.7	229.3x5.7		
74x4			123x7	145x4			435x8	
74x7	89.2x3	105x2			182x4	230x5		
74.2x5.7	89.2x5.7	105x3	124x3	148x3			470x6	
74.5x3	89.5x3	105x4	124.2x5.7		184x3.5	234x4		
	89.6x5.7	105x5	124.5x3	149.2x5.7	184x4	240x5	480x6	
75x2					184x8			
75x3	90x1.5	106x2	125x2.5	150x3	184.2x5.7			
75x4	90x2		125x3	150x4	184.5x3	243x7		
75x5	90x2.5	108x3	125x4	150x5				
	90x3	108x10	125x5	150x6	189.2x5.7	245x5		
76x1.5	90x3.5				189.3x5.7			
76x2.5	90x4	109.2x5.7	126x3	152.5x2.5	189.5x3	249.2x5.7		
76x3	90x5	109.5x3						
76x4			128x3	154x3	190x3	250x5		
	91x3.5	110x2		154.2x5.7	190x4			
77x4	91.7x1.78	110x2.5	129x3		190x5	256x3.5		
77.5x2.62		110x3	129.2x5.7	155x3				
	92x2.5	110x3.5	129.5x3	155x4	192x3	259.2x5.7		
78x3.5	92x3	110x4				259.3x5.7		
78x4	92x4	110x4.5	130x3	158x4	194x3			
78x4.3		110x5	130x3.5	158x6	194.5x3	260x5		
78x5	94x2	110x6	130x4	158x7				
	94x2.5	110x7	130x5		195x3.5	264x4		
79x1.78	94x3		130x6	159x3	195x5			
79x2.5	94x3.5	111x3				265x4		
79x3	94.5x3	111x3.5	131x2.5	160x3	199.2x5.7	265x5		
79x5				160x4	199.5x3	265x8		
79.2x5.7	95x2.5	112x3	132x3	160x5				
79.5x3	95x3	112x6	132x4	160x5.7	200x4	270x5		
	95x4		132x8	160x6	200x5	270x6		
80x1.5	95x5	114x2			200x6			
80x2	95x6	114x3	134x3	161x3.5		272x4		
80x2.5		114x4	134.2x5.7		202x4			
80x3	96x2	114x7	134.3x5.7	164.2x5.7		280x3		
80x3.5	96x3	114.2x5.7	134.5x3	164.3x5.7	203x3	280x5		
80x4	96x4	114.3x5.7		164.5x3		280x6		
80x5	96x6	114.5x3	135x2.5		205x8	280x8		
80x5.5			135x3	165x5				
	97.2x5.7	115x2	135x4	165x7	208x3.5	290x8		
81.2x5.7	97x3	115x2.5			208x7			
	97x4	115x3	136x5	166.7x6.99		297x4		
82x3		115x4.1			210x3			
82x3.5	98x2.5	115x5	137x3	168x5	210x4	300x6		
82x4	98x3		137x4	168x7	210x5	300x7		
82x5	98x4	116x3.5						
		116x4	138x6	169x2.4	213x3	307x5		
84x3	99x3			169.2x5.7				
84x3.5	99.2x5.7	117x2.5	139x4	169.5x3	214x5	310x3		
84x4	99.5x3	117x3.5	139x5			310x5		
84.2x5.7	99.6x5.7	117x4	139.2x5.7	170x3	216x4			
84.3x5.7			139.5x3	170x4		325x4		
84.5x3	100x2	118x4		170x5	218x6			
	100x2.5		140x2	170x6		333x4		
85x2	100x3	119.3x5.7	140x3	170x7	219.1x8.4			
	100x3.5		140x3.5			339.2x5.7		
	100x4		140x4	174x3	219.2x5.7			

Special O-Rings

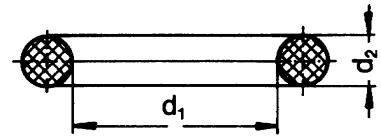
Standard elastomer compounds available.

DIN abbreviation / Material	
NB	Nitrile-Butadiene-Rubber
AC	Acrylate-Rubber
SI	Silicone-Rubber
FP	Fluorocarbon-Rubber (Viton)
EP	Ethylene-Propylene-Rubber
CR	Chloroprene-Rubber
SB	Styrol-Butadiene-Rubber
BU	Butyl-Rubber
NR	Natural Rubber
FS	Fluorosilicone-Rubber

Hardness of compounds available.
Standard hardness is 70 Shore A.

Hardness Shore A	60	70	80	90
Hardness IRHD	63	73	83	92
Allowed deviation ± 5 Testing of hardness according to DIN 53 505				

British Standard
French Standard
Swedish Standard
Standard DIN ISO 3601



Properties of Available Materials

	NB	FP	SI	EP	CR	NR	BU	CSM	PTFE
Tensile strength, unsupported	5	5	6	5	3	1	4	5	1
Tensile strength, supported	2	3	4	3	2	1	3	3	1
Elongation at break	2	3	4	3	2	1	2	3	3
Rebound elasticity	3	5	3	3	3	2	6	4	na
Wear resistance	2	4	5	3	2	2	3	3	3
Tearing resistance	3	3	6	3	2	2	3	4	2
Resistance opposition to electric flow	4	4	1	2	3	1	2	4	1
Resistance to aging	3	1	1	1	2	3	2	2	1
Ozone resistance	3	1	1	1	2	4	2	2	1
Fuel resistance	1	1	5	5	2	6	6	2	1
Oil and grease resistance	1	1	1	4	2	6	6	2	1
Acid resistance	4	1	5	1	2	3	2	2	1
Alkali resistance	3	1	5	2	2	3	2	2	1
Hot water	3	2	5	2	3	3	1	3	1
High temperature range C°	+130	+220	+200	+150	+120	+90	+140	+130	+260
Low temperature range C°	-40	-25	-80	-40	-30	-50	-40	-40	-190

1 = excellent 4 = moderate
2 = very good 5 = minimal
3 = good 6 = insufficient

Inquire for additional standard and nonstandard sizes.

O-Ring Assortment Kits

Kit "C" NB 70 Shore A

Kit C		O-Rings NB 70 Shore 30 sizes = 425 pieces				
20 x 3.0 x 1.5	20 x 5.0 x 1.5	20 x 7.0 x 1.5	20 x 9.0 x 1.5	20 x 11.0 x 1.5		
20 x 6.0 x 2	20 x 8.0 x 2	20 x 10.0 x 2	20 x 12.0 x 2	20 x 14.0 x 2		
15 x 6.3 x 2.4	15 x 8.3 x 2.4	15 x 11.3 x 2.4	15 x 13.3 x 2.4	15 x 17.3 x 2.4		
15 x 5.0 x 2.5	15 x 7.0 x 2.5	15 x 10.0 x 2.5	15 x 12.0 x 2.5	15 x 15.0 x 2.5		
10 x 10 x 3	10 x 12.0 x 3	10 x 14.0 x 3	10 x 16.0 x 3	10 x 18.0 x 3		
5 x 20.2 x 3	5 x 22.2 x 3	5 x 24.2 x 3	5 x 26.2 x 3	5 x 30.2 x 3		

Kit "C VITON" FP 80 Shore A

Kit C Viton		O-Rings FP 80 Shore 30 sizes = 425 pieces				
20 x 3.0 x 1.5	20 x 5.0 x 1.5	20 x 7.0 x 1.5	20 x 9.0 x 1.5	20 x 11.0 x 1.5		
20 x 6.0 x 2	20 x 8.0 x 2	20 x 10.0 x 2	20 x 12.0 x 2	20 x 14.0 x 2		
15 x 6.3 x 2.4	15 x 8.3 x 2.4	15 x 11.3 x 2.4	15 x 13.3 x 2.4	15 x 17.3 x 2.4		
15 x 5.0 x 2.5	15 x 7.0 x 2.5	15 x 10.0 x 2.5	15 x 12.0 x 2.5	15 x 15.0 x 2.5		
10 x 10 x 3	10 x 12.0 x 3	10 x 14.0 x 3	10 x 16.0 x 3	10 x 18.0 x 3		
5 x 20.2 x 3	5 x 22.2 x 3	5 x 24.2 x 3	5 x 26.2 x 3	5 x 30.2 x 3		

Kit "D" NB 70 Shore A

Kit D		O-Rings NB 70 Shore 24 sizes = 285 pieces				
15 x 18.0 x 2	15 x 20.0 x 2	15 x 22.0 x 3	15 x 25.0 x 3	15 x 28.2 x 3	15 x 30.2 x 3	
10 x 32.2 x 3	10 x 36.2 x 3	15 x 25.0 x 4	15 x 30.0 x 4	15 x 32.0 x 4	15 x 34.0 x 4	
15 x 36.0 x 4	10 x 38.0 x 4	10 x 40.0 x 4	10 x 44.0 x 4	10 x 48.0 x 4	10 x 50.0 x 4	
10 x 25.0 x 5	10 x 30.0 x 5	10 x 35.0 x 5	10 x 40.0 x 5	5 x 45.0 x 5	5 x 50.0 x 5	

Kit "D VITON" FP 80 Shore A

Kit D Viton		O-Rings FP 80 Shore 24 sizes = 285 pieces				
15 x 18.0 x 2	15 x 20.0 x 2	15 x 22.0 x 3	15 x 25.0 x 3	15 x 28.2 x 3	15 x 30.2 x 3	
10 x 32.2 x 3	10 x 36.2 x 3	15 x 25.0 x 4	15 x 30.0 x 4	15 x 32.0 x 4	15 x 34.0 x 4	
15 x 36.0 x 4	10 x 38.0 x 4	10 x 40.0 x 4	10 x 44.0 x 4	10 x 48.0 x 4	10 x 50.0 x 4	
10 x 25.0 x 5	10 x 30.0 x 5	10 x 35.0 x 5	10 x 40.0 x 5	5 x 45.0 x 5	5 x 50.0 x 5	

Kit "E" NB 70 Shore A

Kit E		O-Rings NB 70 Shore 32 sizes = 428 pieces				
20 x 3.0 x 2	20 x 5.0 x 2	18 x 6.0 x 2	18 x 8.0 x 2	17 x 10.0 x 2	17 x 13.0 x 2	
14 x 10.0 x 2.5	14 x 12.0 x 2.5	14 x 14.0 x 2.5	14 x 15.0 x 2.5	14 x 16.0 x 2.5	14 x 18.0 x 2.5	
14 x 20.0 x 2.5	14 x 21.0 x 2.5	14 x 22.0 x 2.5	12 x 19.0 x 3	12 x 20.0 x 3	12 x 22.0 x 3	
12 x 24.0 x 3	12 x 25.0 x 3	12 x 27.0 x 3	12 x 28.0 x 3	12 x 30.0 x 3	12 x 32.0 x 3	
12 x 33.0 x 3	12 x 35.0 x 3	12 x 36.0 x 3	12 x 38.0 x 3	9 x 39.0 x 4	9 x 42.0 x 4	
9 x 45.0 x 4					9 x 48.0 x 4	

Kit "SPLICE" NB 70 Shore A

Kit Splice		O-Rings NB 70 Shore 9 sizes x 3 feet (914 mm)	
<p>(1x) Razor Blade (1x) Tube of Adhesive (1x) Splicing & Cutting Jig (1x) Ø1.5 mm x 914 mm O-Ring NB 70 Shore A Cord (1x) Ø2.0 mm x 914 mm O-Ring NB 70 Shore A Cord (1x) Ø2.5 mm x 914 mm O-Ring NB 70 Shore A Cord (1x) Ø3.0 mm x 914 mm O-Ring NB 70 Shore A Cord (1x) Ø3.5 mm x 914 mm O-Ring NB 70 Shore A Cord (1x) Ø4.0 mm x 914 mm O-Ring NB 70 Shore A Cord (1x) Ø5.0 mm x 914 mm O-Ring NB 70 Shore A Cord (1x) Ø6.0 mm x 914 mm O-Ring NB 70 Shore A Cord (1x) Ø8.5 mm x 914 mm O-Ring NB 70 Shore A Cord</p>			

Kit "A" NB 70 Shore A

Kit A		O-Rings NB 70 Shore 30 sizes = 340 pieces									
20 x 2.90 x 1.78	20 x 3.68 x 1.78	20 x 4.48 x 1.78	20 x 5.28 x 1.78	20 x 6.07 x 1.78	15 x 12.37 x 2.62	15 x 13.95 x 2.62	10 x 15.54 x 2.62	10 x 17.13 x 2.62	10 x 18.72 x 2.62		
20 x 7.66 x 1.78	20 x 9.25 x 1.78	15 x 10.82 x 1.78	15 x 12.42 x 1.78	10 x 14.0 x 1.78	5 x 20.29 x 2.62	5 x 21.89 x 2.62	5 x 23.47 x 2.62	5 x 18.64 x 3.53	5 x 20.22 x 3.53		
10 x 15.60 x 1.78	5 x 17.16 x 1.78	5 x 18.77 x 1.78	15 x 9.19 x 2.62	15 x 10.78 x 2.62	5 x 21.82 x 3.53	5 x 23.40 x 3.53	5 x 24.99 x 3.53	5 x 26.58 x 3.53	5 x 28.17 x 3.53		

O-Ring Cord

NB 70 Nitrile O-Ring Cord

Part No.	Diameter mm
1.50	Ø1.50
1.60	Ø1.60
1.78	Ø1.78
2.00	Ø2.00
2.40	Ø2.40
2.50	Ø2.50
2.62	Ø2.62
2.70	Ø2.70
3.00	Ø3.00
3.20	Ø3.20
3.50	Ø3.50
3.53	Ø3.53
3.60	Ø3.60
4.00	Ø4.00
4.50	Ø4.50
4.75	Ø4.75
5.00	Ø5.00
5.33	Ø5.33
5.50	Ø5.50
5.70	Ø5.70
6.00	Ø6.00
6.35	Ø6.35
6.40	Ø6.40
6.50	Ø6.50
6.99	Ø6.99
7.00	Ø7.00
7.50	Ø7.50
8.00	Ø8.00
8.40	Ø8.40
8.50	Ø8.50
9.00	Ø9.00
9.50	Ø9.50
10.00	Ø10.00
11.00	Ø11.00
12.00	Ø12.00
12.50	Ø12.50
12.70	Ø12.70
13.00	Ø13.00
14.00	Ø14.00
15.00	Ø15.00
16.00	Ø16.00
17.00	Ø17.00
18.00	Ø18.00
19.00	Ø19.00
20.00	Ø20.00
22.00	Ø22.00
25.00	Ø25.00
30.00	Ø30.00

FP 70 Viton O-Ring Cord

Part No.	Diameter mm
2.00V	Ø2.00
2.40V	Ø2.40
2.50V	Ø2.50
2.62V	Ø2.62
3.00V	Ø3.00
3.50V	Ø3.50
3.53V	Ø3.53
4.00V	Ø4.00
4.50V	Ø4.50
5.00V	Ø5.00
5.33V	Ø5.33
5.50V	Ø5.50
5.70V	Ø5.70
6.00V	Ø6.00
6.35V	Ø6.35
6.50V	Ø6.50
6.99V	Ø6.99
7.00V	Ø7.00
7.50V	Ø7.50
8.00V	Ø8.00
8.40V	Ø8.40
8.50V	Ø8.50
9.00V	Ø9.00
10.00V	Ø10.00
11.00V	Ø11.00
12.00V	Ø12.00
13.00V	Ø13.00
14.00V	Ø14.00
15.00V	Ø15.00
16.00V	Ø16.00
18.00V	Ø18.00
20.00V	Ø20.00
22.00V	Ø22.00
25.00V	Ø25.00
30.00V	Ø30.00

SI 60 Silicone O-Ring Cord (red)

Part No.	Diameter mm
1.50S	Ø1.50
1.60S	Ø1.60
1.78S	Ø1.78
2.00S	Ø2.00
2.40S	Ø2.40
2.50S	Ø2.50
2.62S	Ø2.62
3.00S	Ø3.00
3.50S	Ø3.50
3.53S	Ø3.53
4.00S	Ø4.00
4.50S	Ø4.50
5.00S	Ø5.00
5.33S	Ø5.33
5.50S	Ø5.50
5.70S	Ø5.70
6.00S	Ø6.00
6.35S	Ø6.35
6.50S	Ø6.50
6.99S	Ø6.99
7.00S	Ø7.00
7.50S	Ø7.50
8.00S	Ø8.00
8.40S	Ø8.40
8.50S	Ø8.50
9.00S	Ø9.00
10.00S	Ø10.00
11.00S	Ø11.00
12.00S	Ø12.00
13.00S	Ø13.00
14.00S	Ø14.00
15.00S	Ø15.00
16.00S	Ø16.00
17.00S	Ø17.00
18.00S	Ø18.00
19.00S	Ø19.00
20.00S	Ø20.00

O-Ring Cord sold in 1m increments.