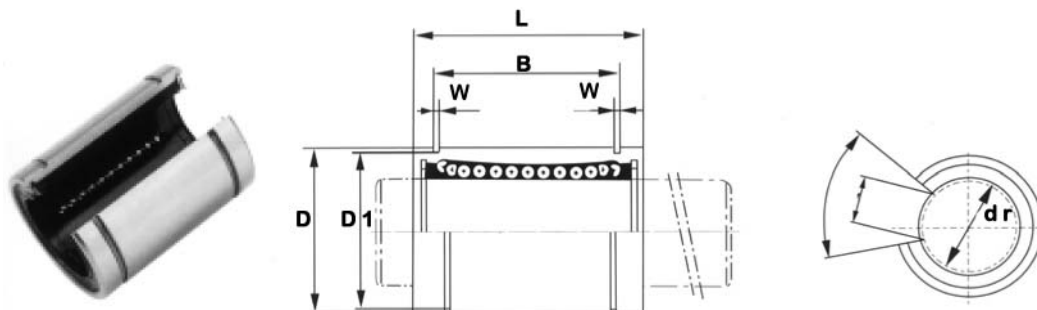
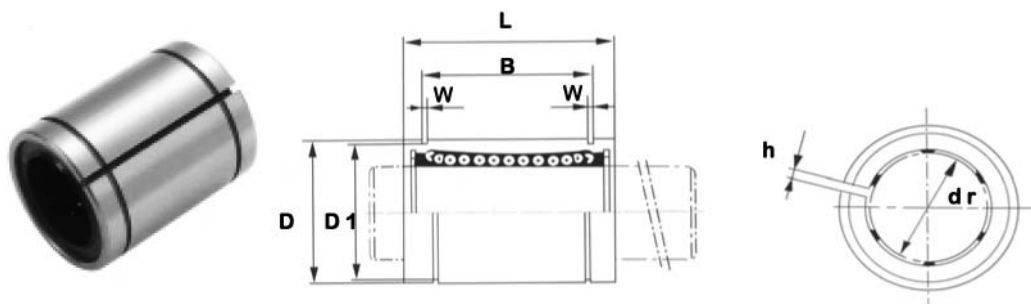


American Standard Linear Bearings Standard Type

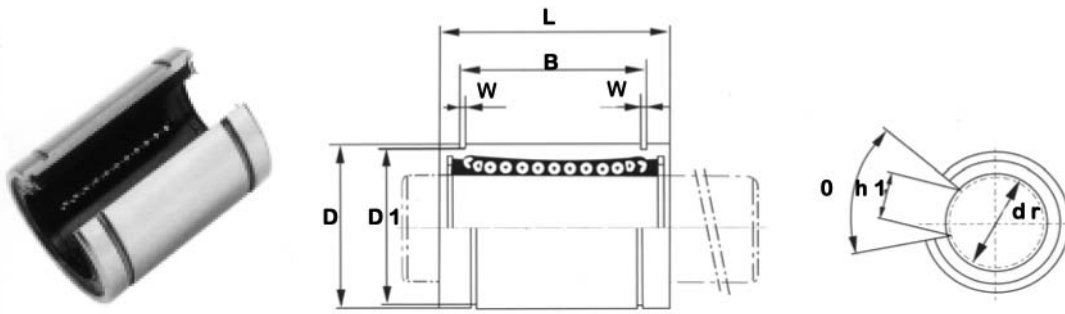


Part Number	No. of Ball Rows	Main Diameters											Basic Load Rating	
		Inscribed Circle Diameter		Outer Diameter		Length		Outer Locking Groove			Eccentricity (max)	Dynamic C (kgf)	Static Co (kgf)	
		dr	Tolerance	D	Tolerance	L	Tolerance	B	Tolerance	D1				W
LMB 04 UU	3	1/4	0	0.500	0	0.750	0	0.511	0	0.469	0.039	0.012	21	27
LMB 06 UU	4	3/8	0	0.625	0	0.875	0	0.639	0	0.588	0.039	0.012	23	32
LMB 08 UU	4	1/2	0	0.875	0	1.250	0	0.963	0	0.821	0.046	0.012	52	80
LMB 10 UU	4	5/8	0	1.125	0	1.500	0	1.104	0	1.059	0.056	0.012	79	120
LMB 12 UU	5	3/4	0	1.250	0	1.625	0	1.166	0	1.176	0.056	0.015	88	140
LMB 16 UU	5	1	0	1.563	0	2.250	0	1.755	0	1.469	0.068	0.015	100	160
LMB 20 UU	6	1 1/4	0	2.000	0	2.625	0	2.005	0	1.886	0.068	0.020	160	280
LMB 24 UU	6	1 1/2	0	2.375	0	3.000	0	2.412	0	2.239	0.086	0.020	220	410
LMB 32 UU	6	2	0	3.000	0	4.000	0	3.192	0	2.838	0.103	0.025	390	810



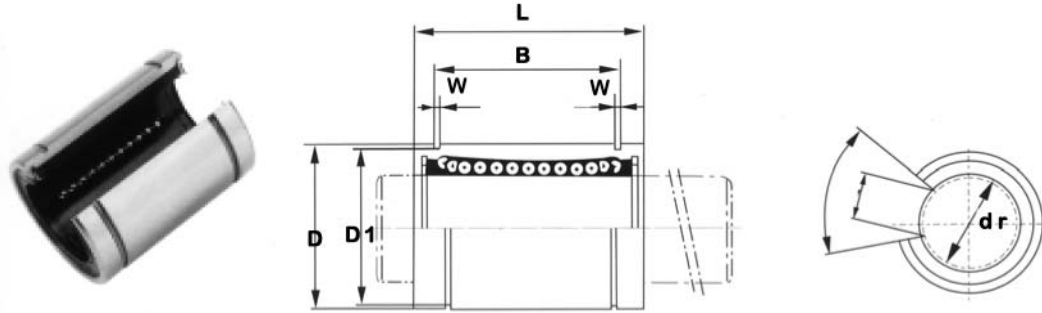
Part Number	No. of Ball Rows	Main Diameters											Basic Load Rating		
		Inscribed Circle Diameter		Outer Diameter		Length		Outer Locking Groove			Eccentricity (max)	Dynamic C (kgf)	Static Co (kgf)		
		dr	Tolerance	D	Tolerance	L	Tolerance	B	Tolerance	D1				W	h
LMB 04 UUAJ	3	1/4	0	0.500	0	0.750	0	0.511	0	0.469	0.039	1/25	0.012	21	27
LMB 06 UUAJ	4	3/8	0	0.625	0	0.875	0	0.639	0	0.588	0.039	1/25	0.012	23	32
LMB 08 UUAJ	4	1/2	0	0.875	0	1.250	0	0.963	0	0.821	0.046	3/50	0.012	52	80
LMB 10 UUAJ	4	5/8	0	1.125	0	1.500	0	1.104	0	1.059	0.056	3/50	0.012	79	120
LMB 12 UUAJ	5	3/4	0	1.250	0	1.625	0	1.166	0	1.176	0.056	3/50	0.015	88	140
LMB 16 UUAJ	5	1	0	1.563	0	2.250	0	1.755	0	1.469	0.068	3/50	0.015	100	160
LMB 20 UUAJ	6	1 1/4	0	2.000	0	2.625	0	2.005	0	1.886	0.068	1/10	0.020	160	280
LMB 24 UUAJ	6	1 1/2	0	2.375	0	3.000	0	2.412	0	2.239	0.086	3/25	0.020	220	410
LMB 32 UUAJ	6	2	0	3.000	0	4.000	0	3.192	0	2.838	0.103	3/25	0.025	390	810

American Standard Linear Bearings Open Type

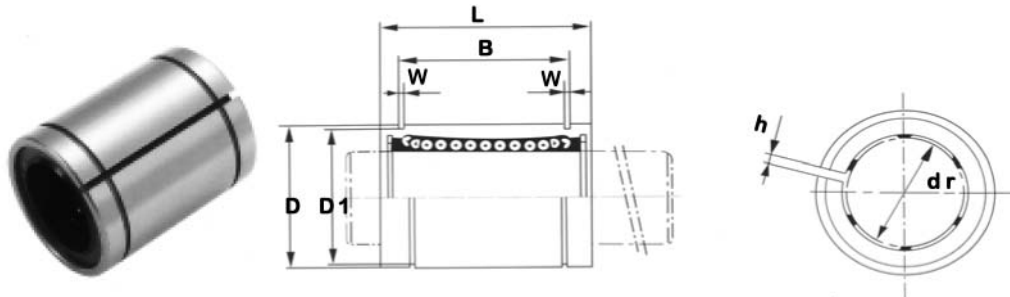


Part Number	No. of Ball Rows	Main Diameters												Basic Load Rating		
		Inscribed Circle Diameter		Outer Diameter		Length		Outer Locking Groove			Eccentricity (max)	Dynamic C (kgf)	Static Co (kgf)			
		dr	Tolerance	D	Tolerance	L	Tolerance	B	Tolerance	D1				W	h1	0
LMB 08 UUOP	3	1/2	0	0.875	0	1.250	0	0.963	0	0.821	0.046	0.340	80°	0.012	52	80
LMB 10 UUOP	3	5/8	0	1.125	0	1.500	0	1.104	0	1.059	0.056	0.375	80°	0.012	79	120
LMB 12 UUOP	4	3/4	0	1.250	0	1.625	0	1.166	0	1.176	0.056	0.438	60°	0.015	88	140
LMB 16 UUOP	4	1	0	1.563	0	2.250	0	1.755	0	1.469	0.068	0.563	50°	0.015	100	160
LMB 20 UUOP	5	1 1/4	0	2.000	0	2.625	0	2.005	0	1.886	0.068	0.625	50°	0.020	160	280
LMB 24 UUOP	5	1 1/2	0	2.375	0	3.000	0	2.412	0	2.239	0.086	0.750	50°	0.020	220	410
LMB 32 UUOP	5	2	0	3.000	0	4.000	0	3.192	0	2.838	0.103	1.000	50°	0.025	390	810

European Standard Linear Bearings Standard Type

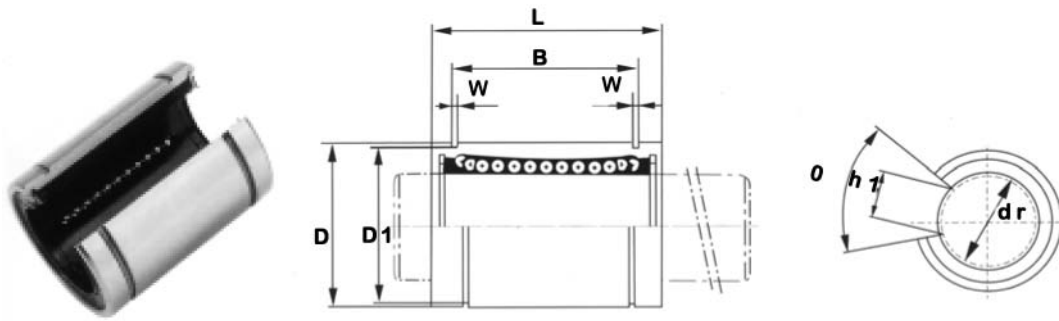


Part Number	No. of Ball Rows	Main Diameters										Eccentricity (max)	Basic Load Rating	
		Inscribed Circle Diameter		Outer Diameter		Length		Outer Locking Groove					Dynamic C (kgf)	Static Co (kgf)
		dr	Tolerance	D	Tolerance	L	Tolerance	B	Tolerance	D1	W			
LME 05 UU	4	5	0.008	12	0	22	0	14.5	0	11.5	1.1	0.012	21	27
LME 08 UU	4	8	0.008	16	0	25	0	16.5	0	15.2	1.1	0.012	27	41
LME 12 UU	4	12	0.008	22	0	32	0	22.9	0	21.0	1.3	0.012	52	79
LME 16 UU	5	16	0.009	26	0	36	0	24.9	0	24.9	1.3	0.012	59	91
LME 20 UU	5	20	0.009	32	0	45	0	31.5	0	30.3	1.6	0.015	88	140
LME 25 UU	6	25	0.011	40	0	58	0	44.1	0	37.5	1.9	0.015	100	160
LME 30 UU	6	30	0.011	47	0	68	0	52.1	0	44.5	1.9	0.015	160	280
LME 40 UU	6	40	0.013	62	0	80	0	60.6	0	59.0	2.2	0.017	220	400
LME 50 UU	6	50	0.013	75	0	100	0	77.6	0	72.0	2.7	0.017	390	810
LME 60 UU	6	60	0.013	90	0	125	0	101.7	0	86.5	3.2	0.020	480	1020



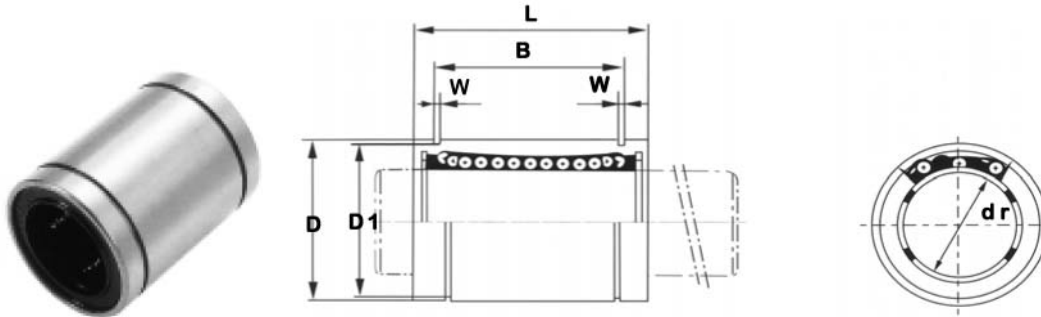
Part Number	No. of Ball Rows	Main Diameters											Eccentricity (max)	Basic Load Rating	
		Inscribed Circle Diameter		Outer Diameter		Length		Outer Locking Groove				Dynamic C (kgf)		Static Co (kgf)	
		dr	Tolerance	D	Tolerance	L	Tolerance	B	Tolerance	D1	W				h
LME 05 UUAJ	4	5	0.008	12	0	22	0	14.5	0	11.5	1.10	1	0.012	21	27
LME 08 UUAJ	4	8	0.008	16	0	25	0	16.5	0	15.2	1.10	1	0.012	27	41
LME 12 UUAJ	4	12	0.008	22	0	32	0	22.9	0	21	1.30	1.5	0.012	52	79
LME 16 UUAJ	5	16	0.009	26	0	36	0	24.9	0	24.9	1.30	1.5	0.012	59	91
LME 20 UUAJ	5	20	0.009	32	0	45	0	31.5	0	30.3	1.60	2	0.015	88	140
LME 25 UUAJ	6	25	0.011	40	0	58	0	44.1	0	37.5	1.85	2	0.015	100	160
LME 30 UUAJ	6	30	0.011	47	0	68	0	52.1	0	44.5	1.85	2	0.015	160	280
LME 40 UUAJ	6	40	0.013	62	0	80	0	60.6	0	59	2.15	3	0.017	220	400
LME 50 UUAJ	6	50	0.013	75	0	100	0	77.6	0	72	2.65	3	0.017	390	810
LME 60 UUAJ	6	60	0.013	90	0	125	0	101.7	0	86.5	3.15	3	0.020	480	1020

European Standard Linear Bearings

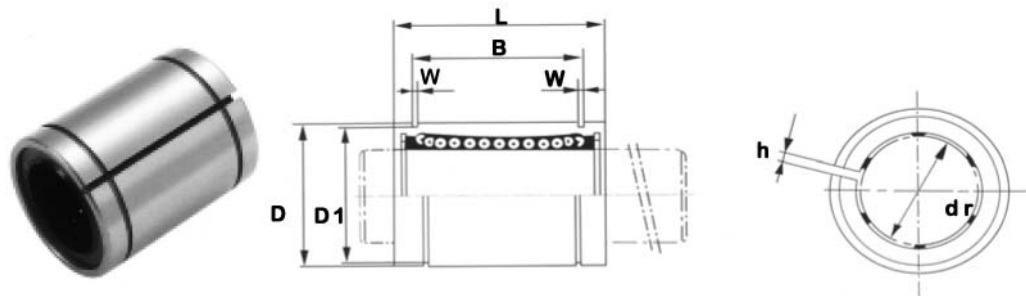


Part Number	No. of Ball Rows	Main Diameters												Eccentricity (max)	Basic Load Rating	
		Inscribed Circle Diameter		Outer Diameter		Length		Outer Locking Groove				Dynamic C (kgf)	Static Co (kgf)			
		dr	Tolerance	D	Tolerance	L	Tolerance	B	Tolerance	D1	W				h1	0
LME 16 UUOP	4	16	0.009	26	0	36	0	24.9	0	24.9	1.3	10	78°	0.012	59	91
LME 20 UUOP	4	20	0.009	32	0	45	0	31.5	0	30.3	1.6	10	60°	0.015	88	140
LME 25 UUOP	5	25	0.011	40	0	58	0	44.1	0	37.5	1.85	12.5	60°	0.015	100	160
LME 30 UUOP	5	30	0.011	47	0	68	0	52.1	0	44.5	1.85	12.5	60°	0.015	160	280
LME 40 UUOP	5	40	0.013	62	0	80	0	60.6	0	59	2.15	16.8	60°	0.017	220	400
LME 50 UUOP	5	50	0.013	75	0	100	0	77.6	0	72	2.65	21	60°	0.017	390	810
LME 60 UUOP	5	60	0.013	90	0	125	0	101.7	0	86.5	3.15	27.2	60°	0.020	480	1020

Japanese Standard Linear Bearings Standard Type

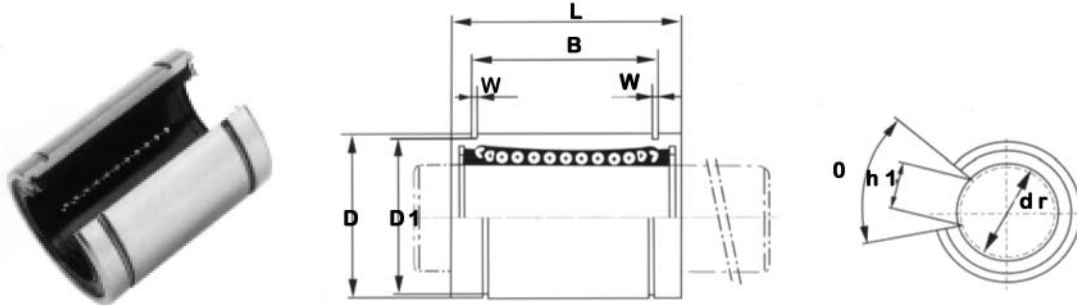


Part Number	No. of Ball Rows	Main Diameters										Eccentricity (max)	Basic Load Rating	
		Inscribed Circle Diameter		Outer Diameter		Length		Outer Locking Groove					Dynamic C (kgf)	Static Co (kgf)
		dr	Tolerance	D	Tolerance	L	Tolerance	B	Tolerance	D1	W			
LM 04 UU	4	4	0	8	0	12	0	-	0	-	1.1	0.008	9	13
LM 05 UU	4	5	0	10	0	15	0	10.2	0	9.6	1.1	0.008	17	21
LM 06 UU	4	6	0	12	0	19	0	13.5	0	11.5	1.1	0.012	21	27
LM 08 UU	4	8	0	15	0	24	0	17.5	0	14.3	1.1	0.012	27	41
LM 10 UU	4	10	0	19	0	29	0	22	0	18	1.3	0.012	38	56
LM 12 UU	4	12	0	21	0	30	0	23	0	20	1.3	0.012	42	61
LM 13 UU	4	13	0	23	0	32	0	23	0	22	1.3	0.012	52	79
LM 16 UU	5	16	0	28	0	37	0	26.5	0	27	1.6	0.012	79	120
LM 20 UU	5	20	0	32	0	42	0	30.5	0	30.5	1.6	0.015	88	140
LM 25 UU	6	25	0	40	0	59	0	41	0	38	1.85	0.015	100	160
LM 30 UU	6	30	0	45	0	64	0	44.5	0	43	1.85	0.015	160	220
LM 35 UU	6	35	0	52	0	70	0	49.5	0	49	2.1	0.020	170	320
LM 40 UU	6	40	0	60	0	80	0	60.5	0	57	2.1	0.020	220	410
LM 50 UU	6	50	0	80	0	100	0	74	0	76.5	2.6	0.020	390	810
LM 60 UU	6	60	0	90	0	110	0	85	0	86.5	3.15	0.025	480	1020



Part Number	No. of Ball Rows	Main Diameters										Eccentricity (max)	Basic Load Rating		
		Inscribed Circle Diameter		Outer Diameter		Length		Outer Locking Groove					Dynamic C (kgf)	Static Co (kgf)	
		dr	Tolerance	D	Tolerance	L	Tolerance	B	Tolerance	D1	W				h
LM 05 UUAJ	-	-	0	-	0	-	0	-	0	-	-	-	0.012	-	-
LM 06 UUAJ	4	6	0	12	0	19	0	13.5	0	11.5	1.1	1	0.012	21	27
LM 08 UUAJ	4	8	0	15	0	24	0	17.5	0	14.3	1.1	1	0.012	27	41
LM 10 UUAJ	4	10	0	19	0	29	0	22	0	18	1.3	1	0.012	38	56
LM 12 UUAJ	4	12	0	21	0	30	0	23	0	20	1.3	1.5	0.012	42	61
LM 13 UUAJ	4	13	0	23	0	32	0	23	0	22	1.3	1.5	0.012	52	79
LM 16 UUAJ	5	16	0	28	0	37	0	26.5	0	278	1.6	1.5	0.012	79	120
LM 20 UUAJ	5	20	0	32	0	42	0	30.5	0	30.5	1.6	1.5	0.015	88	140
LM 25 UUAJ	6	25	0	40	0	59	0	41	0	38	1.85	2	0.015	100	160
LM 30 UUAJ	6	30	0	45	0	64	0	44.5	0	43	1.85	2.5	0.015	160	280
LM 35 UUAJ	6	35	0	52	0	70	0	49.5	0	49	2.1	2.5	0.020	170	320
LM 40 UUAJ	6	40	0	60	0	80	0	60.5	0	57	2.1	3	0.020	220	410
LM 50 UUAJ	6	50	0	80	0	100	0	74	0	76.5	2.6	3	0.020	390	810
LM 60 UUAJ	6	60	0	90	0	110	0	85	0	86.5	3.15	3	0.025	480	1020

Japanese Standard Linear Bearings Open Type



Part Number	No. of Ball Rows	Main Diameters												Basic Load Rating		
		Inscribed Circle Diameter		Outer Diameter		Length		Outer Locking Groove			Eccentricity (max)	Dynamic C (kgf)	Static Co (kgf)			
		dr	Tolerance	D	Tolerance	L	Tolerance	B	Tolerance	D1				W	h1	0
LM 12 UUOP	3	12	0	21	0	30	0	23	0	20	1.3	8	80°	0.012	42	61
LM 13 UUOP	3	13	0	23	0	32	0	23	0	22	1.3	9	80°	0.012	52	79
LM 16 UUOP	4	16	0	28	0	37	0	26.5	0	27	1.6	11	80°	0.012	79	120
LM 20 UUOP	4	20	0	32	0	42	0	30.5	0	30.5	1.6	11	60°	0.015	88	140
LM 25 UUOP	5	25	0	40	0	59	0	41	0	38	1.85	12	60°	0.015	100	160
LM 30 UUOP	5	30	0	45	0	64	0	44.5	0	43	1.85	15	60°	0.150	160	280
LM 35 UUOP	5	35	0	52	0	70	0	49.5	0	49	2.1	17	60°	0.020	170	320
LM 40 UUOP	5	40	0	60	0	80	0	60.5	0	57	2.1	20	60°	0.020	220	410
LM 50 UUOP	5	50	0	80	0	100	0	74	0	76.5	2.6	25	60°	0.020	390	810

LOW COST – GREAT PROTECTION

Ensure the long and short term protection of expensive linear systems with Ametric's lubricants. Our staff Ph.D. chemist has formulated one lubricant to protect during daily usage of linear systems and another formulation to provide long term protection with a paraffinic wax suspension spray.

AMETRIC® GUARD MOISTURE PROTECTION



Daily Protection

Lubricates with P.T.F.E.
Water Displacement
Corrosion Inhibitor
Non-Flammable
19 oz.

Ametric's specially formulated lubricant is a solution for rust and corrosion prevention as well as an excellent lubricant for general lubrication where a light-weight lubricant with P.T.F.E. is desired. This lubricant is used by factories, machine shops, service stations, air lines, air maintenance shops and general industries.

*Ametric® is continually developing new lubrication products.
Ask about our new product lines.*

AMETRIC® BLOCK CORROSION PROTECTION



Long Term Coating

Sprays a Durable Wax Coating
Prevents and Stops Corrosion
Lasts Indefinitely Indoors
Removed With Solvents
10 oz.

Ametric's specially formulated corrosion prevention is a spray that can be used for long-term prevention of rust or corrosion that would occur in long-term storage resulting from humidity. This product is recommended with Ametric shafting and linear products. Applications for this product can be found in marinas, heavy equipment and road maintenance facilities, aircraft hangars, ship yards, farms, bus barns, train and transit service, and others where metal exposure is a problem.

Metric Linear Shafting



Solid*Steel Shafts, Induction Hardened to HRC 62±2
Material: ISO CF-53 (1.1213)/ANSI 1050

Solid*Shafts, Hard-Chrome Plated 5-10µm Thickness, Hardness HV 900/1100
Material: ISO CF-53 (1.1213)/ANSI 1050

Part No.	Shaft o/d Ø mm	Weight per meter kg/m	Max Production Lengths mm	Depth of Hardened Zone DIN 50190 mm	Standard Tolerance ISO h6 µm
WV 5	5	0.154	4000	0.8	0 -8
WV 6	6	0.222	4000	0.8	0 -9
WV 8	8	0.395	5000	1	0 -9
WV 10	10	0.617	5000	1	0 -11
WV 12	12	0.888	6000	1.3	0 -11
WV 14	14	1.208	6000	1.3	0 -11
WV 15	15	1.387	6000	1.3	0 -11
WV 16	16	1.578	6000	1.6	0 -13
WV 18	18	1.998	6000	1.6	0 -13
WV 20	20	2.466	6500	1.6	0 -13
WV 22	22	2.984	6500	1.8	0 -13
WV 25	25	3.853	6500	1.8	0 -16
WV 30	30	5.549	6500	2	0 -16
WV 35	35	7.553	6500	2.5	0 -19
WV 40	40	9.865	6500	2.5	0 -19
WV 45	45	12.480	6500	2.5	0 -19
WV 50	50	15.410	6500	3	0 -19
WV 55	55	-	-	-	-
WV 60	60	22.200	6500	3	0 -19
WV 65	65	-	-	-	-
WV 70	70	30.210	6500	3	0 -19
WV 75	75	-	-	-	-
WV 80	80	39.460	6500	3	0 -19
WV 100	100	61.650	6500	3.3	0 -22

Part No.	Shaft o/d Ø mm	Weight per meter kg/m	Max Production Lengths mm	Depth of Hardened Zone DIN 50190 mm	Standard Tolerance ISO h6 µm
WV1 8	8	0.395	5000	1	0 -15
WV1 10	10	0.617	5000	1	0 -18
WV1 12	12	0.888	6000	1.3	0 -18
WV1 14	14	1.208	6000	1.3	0 -18
WV1 15	15	1.387	6000	1.3	0 -18
WV1 16	16	1.578	6000	1.6	0 -18
WV1 20	20	2.466	6500	1.6	0 -21
WV1 25	25	3.853	6500	1.8	0 -21
WV1 30	30	5.549	6500	2	0 -21
WV1 32	32	6.313	6500	2	0 -21
WV1 35	35	7.553	6500	2.5	0 -25
WV1 40	40	9.865	6500	2.5	0 -25
WV1 50	50	15.410	6500	3	0 -25
WV1 60	60	22.200	6500	3	0 -25
WV1 70	70	-	-	-	-
WV1 80	80	39.460	6500	3	0 -30
WV1 100	100	-	-	-	-

Note: Linear Shafting sold in 0.1m (100 mm) length segments. Shafting can be cut to exact mm lengths +/- 5 mm but billed by the next largest 0.1m (100 mm) length. For example if you order Ø25 mm x 1360 mm Linear Shafting your order will state:

(1) ea WV 25x1.4m Hardened and Ground Shafting
 (Cut to 1,360 mm)

(one meter 1m = 1,000 mm)

Metric Linear Shafting



Rust and Acid Resistant HRC 51-55

Material: X-40Cr13 (1.4034)/ANSI 420B

Part No.	Shaft o/d Ø mm	Weight per meter kg/m	Max Production Lengths mm	Depth of Hardened Zone DIN 50190 mm	Standard Tolerance ISO h6 µm
WRS1 6	6	0.222	3900	0.7	0 -9
WRS1 8	8	0.395	3900	0.9	0 -9
WRS1 10	10	0.617	3900	1.1	0 -11
WRS1 12	12	0.888	4900	1.3	0 -11
WRS1 14	14	1.208	4900	1.5	0 -11
WRS1 15	15	1.387	4900	1.6	0 -11
WRS1 16	16	1.578	4900	1.6	0 -11
WRS1 20	20	2.466	4900	1.8	0 -13
WRS1 25	25	3.853	4900	2	0 -13
WRS1 30	30	5.549	4900	2.4	0 -13
WRS1 40	40	9.865	4900	2.6	0 -13
WRS1 50	50	15.410	4900	2.9	0 -13
WRS1 60	60	22.200	4900	3	0 -16

Stainless Steel, Acid Resistant HRC 52-56

Material: X-90CrMoV18 (1.4112)

Part No.	Shaft o/d Ø mm	Weight per meter kg/m	Max Production Lengths mm	Depth of Hardened Zone DIN 50190 mm	Standard Tolerance ISO h6 µm
WRS2 5	5	0.154	3800	0.7	0 -8
WRS2 8	8	0.395	3800	0.9	0 -9
WRS2 10	10	0.617	3800	1.1	0 -11
WRS2 12	12	0.888	7800	1.3	0 -11
WRS2 14	14	1.208	7800	1.5	0 -11
WRS2 15	15	1.387	7800	1.6	0 -11
WRS2 16	16	1.578	7800	1.6	0 -11
WRS2 20	20	2.466	7800	1.8	0 -13
WRS2 25	25	3.853	7800	2	0 -13
WRS2 30	30	5.549	7800	2.4	0 -13
WRS2 40	40	9.865	7800	2.6	0 -13
WRS2 50	50	15.410	7800	2.9	0 -13
WRS2 60	60	22.200	7800	3	0 -16

Stainless Steel, Acid Resistant HRC 52-56

Material: X105CrMo17 (1.41252)/ANSI

Part No.	Shaft o/d Ø mm	Weight per meter kg/m	Max Production Lengths mm	Depth of Hardened Zone DIN 50190 mm	Standard Tolerance ISO h6 µm
WRS3 5	5	-	-	-	-
WRS3 8	8	-	-	-	-
WRS3 10	10	-	-	-	-
WRS3 12	12	0.888	6000	1.3	0 -11
WRS3 14	14	1.208	6000	1.5	0 -11
WRS3 15	15	1.387	6000	1.6	0 -11
WRS3 16	16	1.578	6000	1.6	0 -11
WRS3 20	20	2.466	6000	1.8	0 -13

Hollow/Tubular Shafts, Induction Hardened HRC 62±2

Material: C60 or 100Cr 6(1.0601)/ANSI 52100

Part No.	Shaft o/d Ø mm	Weight per meter kg/m	Max Production Lengths mm	Depth of Hardened Zone DIN 50190 mm	Standard Tolerance ISO h6 µm
WH 12X3.5	12	0.790	6000	1.3	0 -11
WH 16X8	16	1.280	6000	1.6	0 -11
WH 20X12	20	1.250	6000	1.8	0 -13
WH 25X14	25	2.350	6000	2	0 -13
WH 30X19	30	3.500	6000	2.4	0 -13
WH 40X26	40	4.990	6000	2.6	0 -16
WH 50X35	50	9.910	6000	2.9	0 -16
WH 60X36	60	14.200	6000	3	0 -19
WH 80X53	80	19.430	6000	3.2	0 -19

Note: Linear Shafting sold in 0.1m (100 mm) length segments. Shafting can be cut to exact mm lengths +/- 5 mm but billed by the next largest 0.1m (100 mm) length. For example if you order Ø25 mm x 1360 mm Linear Shafting your order will state:

(1) ea WV 25x1.4m Hardened and Ground Shafting
(Cut to 1,360 mm)

(one meter 1m = 1,000 mm)