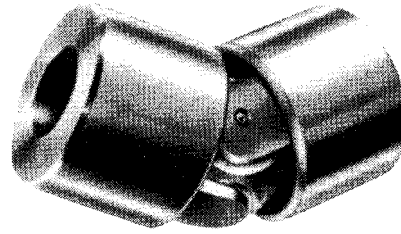
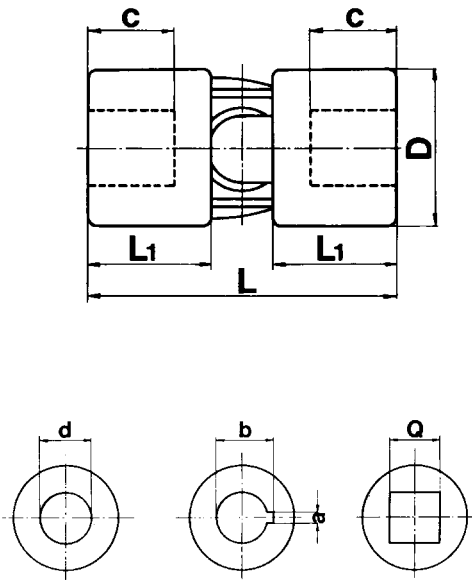


Universal Joints



Single Universal Joint with Bore

| Part No. | Bore $\varnothing d$ | Outside Diameter $\varnothing D$ | Length L | Bore Depth C | | Keyway | | Square Hole Q | Weight kg |
|----------|----------------------|----------------------------------|----------|--------------|------|--------|------|---------------|-----------|
| | | | | | | a | b | | |
| S6X16 | 6 | 16 | 34 | 9 | 17 | | | 6 | 0.05 |
| S8X18 | 8 | 18 | 40 | 11 | 20 | | | 8 | 0.06 |
| S10X22 | 10 | 22 | 48 | 14 | 24 | 3 | 11.4 | 10 | 0.10 |
| S12X26 | 12 | 26 | 56 | 16 | 28 | 4 | 13.8 | 12 | 0.15 |
| S14X29 | 14 | 29 | 60 | 17 | 30 | 5 | 16.3 | 14 | 0.20 |
| S16X32 | 16 | 32 | 68 | 20 | 34 | 5 | 18.3 | 16 | 0.30 |
| S18X37 | 18 | 37 | 74 | 21 | 37 | 6 | 20.8 | 18 | 0.45 |
| S20X42 | 20 | 42 | 82 | 23 | 41 | 6 | 22.8 | 20 | 0.67 |
| S22X47 | 22 | 47 | 95 | 25 | 47.5 | 6 | 24.8 | 22 | 1.00 |
| S25X52 | 25 | 52 | 108 | 29 | 54 | 8 | 28.3 | 25 | 1.35 |
| S30X58 | 30 | 58 | 122 | 34 | 61 | 8 | 33.3 | 30 | 1.85 |
| S35X70 | 35 | 70 | 140 | 35 | 70 | 10 | 38.3 | 35 | 3.15 |
| S40X80 | 40 | 80 | 160 | 40 | 80 | 12 | 43.3 | 40 | 4.60 |
| S50X95 | 50 | 95 | 190 | 50 | 95 | 14 | 53.8 | 50 | 7.60 |

Central block and forks from one piece of Nickel Chrome steel cemented and hardened HRC ≥ 60 , R ≥ 200 kg/mm². High wear resistance, long life. Pre-lubricated. Greaser built-in. Maximum angle: 45° type "S", 90° type "D". Maximum speed 1000 rpm. Special executions on request.

Stainless steel available upon special request through Special Products Dept.

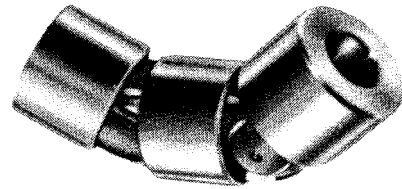
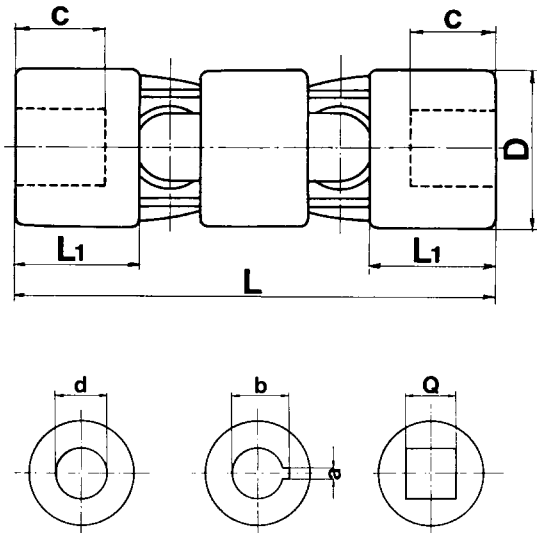
Ordering examples:

S6X16
S = Single Universal Joint
6 = $\varnothing 6$ mm diameter bore
16 = $\varnothing 16$ mm outside diameter

S10X22X3
S = Single Universal Joint
10 = $\varnothing 10$ mm diameter bore
22 = $\varnothing 22$ mm outside diameter
3 = 3 mm keyway

SQ10X22
S = Single Universal Joint
Q10 = 10 mm square hole
22 = $\varnothing 22$ mm outside diameter
(request price)

Universal Joints



Double Universal Joint with Bore

| Part No. | Bore $\varnothing d$ | Outside Diameter $\varnothing D$ | Length L | Bore Depth C | L1 | Keyway | | Square Hole Q | Weight kg |
|----------|----------------------|----------------------------------|----------|--------------|------|--------|------|---------------|-----------|
| | | | | | | a | b | | |
| D12X25 | 12 | 25 | 86 | 13 | 28 | 4 | 13.8 | 12 | 0.25 |
| D14X28 | 14 | 28 | 96 | 13 | 30 | 5 | 16.3 | 14 | 0.40 |
| D16X32 | 16 | 32 | 104 | 16 | 34 | 5 | 18.3 | 16 | 0.45 |
| D18X36 | 18 | 36 | 114 | 17 | 37 | 6 | 20.8 | 18 | 0.70 |
| D20X42 | 20 | 42 | 128 | 18 | 41 | 6 | 22.8 | 20 | 1.00 |
| D22X45 | 22 | 45 | 145 | 22 | 47.5 | 6 | 24.8 | 22 | 1.55 |
| D25X50 | 25 | 50 | 163 | 26 | 54 | 8 | 28.3 | 25 | 2.00 |
| D30X58 | 30 | 58 | 190 | 29 | 61 | 8 | 33.3 | 30 | 2.90 |
| D35X70 | 35 | 70 | 212 | 35 | 70 | 10 | 38.3 | 35 | 4.75 |
| D40X80 | 40 | 80 | 245 | 40 | 80 | 12 | 43.3 | 40 | 7.20 |
| D50X95 | 50 | 95 | 290 | 50 | 95 | 14 | 53.8 | 50 | 12.00 |

Central block and forks from one piece of Nickel Chrome steel cemented and hardened HRC ≥ 60 , R ≥ 200 kg/mm². High wear resistance, long life. Pre-lubricated. Greaser built-in. Maximum angle: 45° type "S", 90° type "D". Maximum speed 1000 rpm. Special executions on request.

Stainless steel available upon special request through Special Products Dept.

Ordering examples:

D12X26

D = Double Universal Joint

12 = $\varnothing 12$ mm diameter bore

26 = $\varnothing 26$ mm outside diameter

D12X26X4

D = Double Universal Joint

12 = $\varnothing 12$ mm diameter bore

26 = $\varnothing 26$ mm outside diameter

4 = 4 mm keyway

DQ12X26

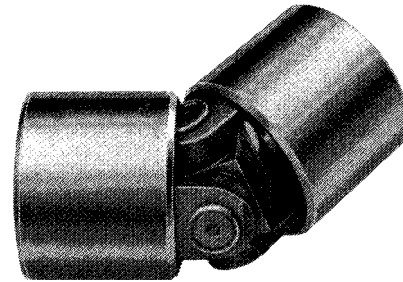
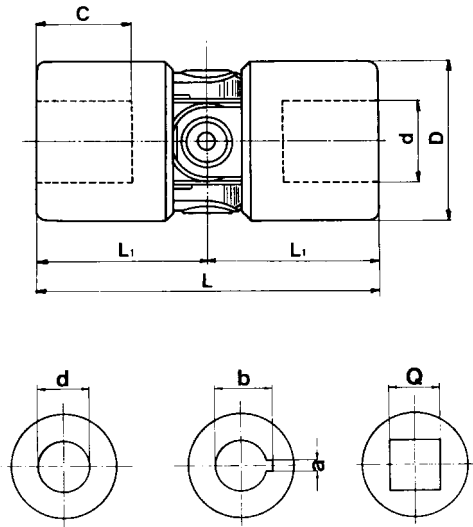
D = Double Universal Joint

Q12 = 12 mm square hole

26 = $\varnothing 26$ mm outside diameter

(request price)

Universal Joints



Single High Speed Universal Joint with Bore

| Part No. | Bore $\varnothing d$ | Outside Diameter $\varnothing D$ | Length L | Bore Depth C | L1 | Keyway | | Square Hole Q | Weight kg |
|----------|----------------------|----------------------------------|----------|--------------|------|--------|------|---------------|-----------|
| | | | | | | a | b | | |
| SHS10X22 | 10 | 22 | | | | | | | |
| SHS12X26 | 12 | 26 | 56 | 14 | 28 | 4 | 13.8 | 12 | 0.15 |
| SHS14X29 | 14 | 29 | 60 | 16 | 30 | 5 | 16.3 | 14 | 0.20 |
| SHS16X32 | 16 | 32 | 68 | 18 | 34 | 5 | 18.3 | 16 | 0.30 |
| SHS18X37 | 18 | 37 | 74 | 20 | 37 | 6 | 20.8 | 18 | 0.45 |
| SHS20X42 | 20 | 42 | 82 | 18 | 41 | 6 | 22.8 | 20 | 0.60 |
| SHS22X47 | 22 | 47 | 95 | 23 | 47.5 | 6 | 24.8 | 22 | 1.00 |
| SHS25X50 | 25 | 50 | 108 | 26 | 54 | 8 | 28.3 | 25 | 1.20 |
| SHS30X58 | 30 | 58 | 122 | 29 | 61 | 8 | 33.3 | 30 | 1.85 |

Central block and forks from one piece of Nickel Chrome steel cemented and hardened HRC ≥ 60 , R ≥ 200 kg/mm². High wear resistance, long life. Pre-lubricated. Greaser built-in. Maximum angle: 45° type "S", 90° type "D". Maximum speed 1000 rpm. Special executions on request.

Stainless steel available upon special request through Special Products Dept.

Ordering examples:

SHS12X26

S = Single Universal Joint

HS = High speed

12 = $\varnothing 12$ mm diameter bore

26 = $\varnothing 26$ mm outside diameter

SHS12X26X4

S = Single Universal Joint

HS = High speed

12 = $\varnothing 12$ mm diameter bore

26 = $\varnothing 26$ mm outside diameter

4 = 4 mm keyway

SHSQ12X26

S = Single Universal Joint

HS = High speed

Q12 = 12 mm square hole

26 = $\varnothing 26$ mm outside diameter

(request price)

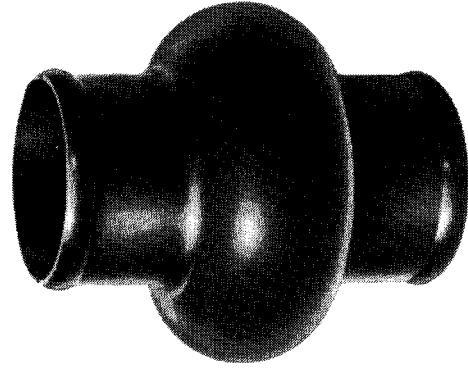
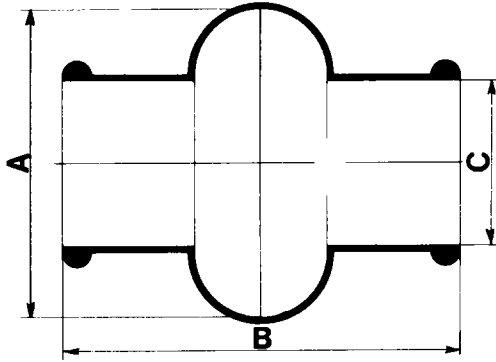


American Metric® Corporation

GROUP: 052

1-052 - 00225

Universal Joints



Universal Joint Boots

| Part No. | For Joint Numbers | Outside Diameter Ø A | Length B | Opening Ø C |
|----------|---|-------------------------|-------------|----------------|
| B15 | S6X16 | 28 | 34 | 15 |
| B16.5 | S8X18 | 32 | 40 | 16.5 |
| B20.5 | S10X22 • S10X22X3 | 40 | 45 | 20.5 |
| B24.5 | S12X26 • S12X26X4 • SHS12X26 • SHS12X26X4 | 48 | 50 | 24.5 |
| B27.5 | S14X29 • S14X29X4 • SHS14X29 • SHS14X29X4 | 52 | 56 | 27.5 |
| B30.5 | S16X32 • S16X32X5 • SHS16X32 • SHS16X32X5 | 56 | 65 | 30.5 |
| B35.5 | S18X37 • S18X37X6 • SHS18X37 • SHS18X37X6 | 66 | 72 | 35.5 |
| B40 | S20X42 • S20X42X6 • SHS20X42 • SHS20X42X6 | 75 | 82 | 40 |
| B45 | S22X47 • S22X47X6 | 84 | 95 | 45 |
| B50 | S25X52 • S25X52X8 • SHS25X52 • SHS25X52X8 | 92 | 108 | 50 |
| B56 | S30X58 • S30X58X8 • SHS30X58X8 • SHS30X58X8 | 100 | 122 | 56 |

Special neoprene rubber. Resistant to: acids, oils, greases, dust, and moisture. Filled with grease, ensure constant lubrication.

Ordering example:

B15

B = Boot

15 = Ø15 mm diameter opening