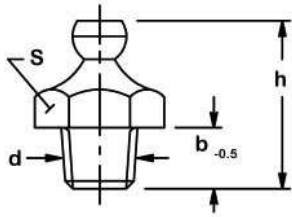
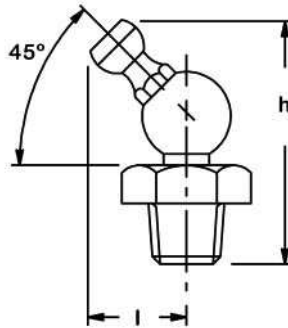


Grease Fittings DIN 71412

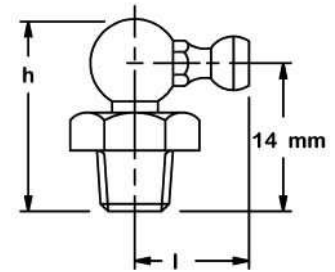
FORM A



FORM B



FORM C



FORM A (straight, tapered thread)

Part No.	Thread d	b _{-0.5}	h max.	l ≈	S Hex.	Material
M6X1	M6X1	5.5	16		7	Bronze
M6X1PF	Ø6 Press Fit	5.5	16		7	Bronze
M6X1SS	M6X1	5.5	16		7	Stainless Steel
M8X1	M8X1	5.5	17		9	Bronze
M8X1PF	Ø8 Press Fit	5.5	17		9	Bronze
M8X1SS	M8X1	5.5	17		9	Stainless Steel
M8X1.25	M8X1.25	5.5	17		9	Bronze
M10X1	M10X1	5.5	18		11	Bronze
M10X1SS	M10X1	5.5	18		11	Stainless Steel
M10X1.5	M10X1.5	5.5	18		11	Bronze

Also Available in Steel IE. M6X1ST

FORM B (45 degree, tapered thread)

Part No.	Thread d	b _{-0.5}	h max.	l ≈	S Hex.	Material
M6X1X45	M6X1	5.5	21	10	11	Bronze
M6X1X45SS	M6X1	5.5	21	10	11	Stainless Steel
M8X1X45	M8X1	5.5	21	10	11	Bronze
M8X1X45SS	M8X1	5.5	21	10	11	Stainless Steel
M8X1.25X45	M8X1.25	5.5	21	10	11	Bronze
M10X1X45	M10X1	5.5	21	11	11	Bronze
M10X1X45SS	M10X1	5.5	21	11	11	Stainless Steel
M10X1.5X45	M10X1.5	5.5	21	11	11	Bronze

Also Available in Steel IE. M6X1X45ST

FORM C (90 degree, tapered thread)

Part No.	Thread d	b _{-0.5}	h max.	l ≈	S Hex.	Material
M6X1X90	M6X1	5.5	18	14.3	11	Bronze
M6X1X90SS	M6X1	5.5	18	14.3	11	Stainless Steel
M8X1X90	M8X1	5.5	18	14.3	11	Bronze
M8X1X90SS	M8X1	5.5	18	14.3	11	Stainless Steel
M8X1.25X90	M8X1.25	5.5	18	14.3	11	Bronze
M10X1X90	M10X1	5.5	18	15.3	11	Bronze
M10X1X90SS	M10X1	5.5	18	15.3	11	Stainless Steel
M10X1.5X90	M10X1.5	5.5	18	15.3	11	Bronze

Also Available in Steel IE. M6X1X90ST

Grease Fittings Inch Series



1/8 PTF 5/8



1/8 PTF 1-1/32X45



1/8 PTF 15/16X65



1/8 PTF 15/16X65



1/4-28T 17/32



1/4-28T 3/4X90



3/16 PF 1/2N



1/8 PTF 3/4 BH

1/8" PTF

Part No.	Type	Thread	Length
1/8 PTF 5/8	Straight	1/8" PTF- <i>SAE Short</i>	0.62"
1/8 PTF 1-1/4	Straight	1/8" PTF- <i>SAE Short</i>	1.25"
1/8 PTF 1-3/4	Straight	1/8" PTF- <i>SAE Short</i>	1.77"
1/8 PTF 1-1/32X45	45°	1/8" PTF- <i>SAE Short</i>	0.98"
1/8 PTF 15/16X65	65°	1/8" PTF- <i>SAE Short</i>	0.88"
1/8 PTF 27/32X90	90°	1/8" PTF- <i>SAE Short</i>	0.82"
1/8 PTF 3/4	Straight	1/8" PTF- <i>SAE Short</i>	0.74"

1/4" PTF

Part No.	Type	Thread	Length
1/4 PTF 13/16	Straight	1/4" PTF	0.80"
1/4 PTF 1X67.5	67½°	1/4" PTF	0.96"

1/4" -28 Taper Thread

Part No.	Type	Thread	Length
1/4-28T 29/32X45	45°	1/4"-28 Taper	0.88"
1/4-28T 17/32	Straight	1/4"-28 Taper	0.54"
1/4-28T 11/16	Straight	1/4"-28 Taper	0.69"
1/4-28T 15/16	Straight	1/4"-28 Taper	0.93"
1/4-28T 15/16X45	45°	1/4"-28 Taper	0.97"
1/4-28T 3/4X90	90°	1/4"-28 Taper	0.69"
1/4-28T 31/64	Straight	UNF-2A Straight	0.49"

Self Tapping Thread

Part No.	Type	Thread	Length
1/8 ST 19/32	Straight	1/8" Taper	0.60"
1/4-28ST 33/64	Straight	1/4"-28 Taper	0.52"

Special Thread

Part No.	Type	Thread	Length
5/16-24UNF-2A5/8	Straight	5/16"-24 UNF-2A	0.62"
3/8-24UNF-3A 5/8	Straight	3/8"-24 UNF-3A	0.62"

BSP Thread Button Head

Part No.	Type	Thread	Length
1/8-28BSPF	-	1/8"-28BSPF	0.59"

BSF Threads

Part No.	Type	Thread	Length
1/4-26BSF	Straight	1/4"-26BSF	0.54"

Drive Type

Part No.	Type	Drill Size	Length
1/4 PF 15/32N	Straight	1/4"	0.51"
3/16 PF 15/32N	Straight	3/16"	0.51"
3/16 PF 31/64N	Straight	3/16"	0.48"
3/16 PF 1/2	Straight	3/16"	0.50"
3/16 PF 1/2N	Straight	3/16"	0.50"
1/4 PF 7/16N	Straight	1/4"	0.41"
1/4 PF 1/2	Straight	1/4"	0.50"
5/16 PF 9/16	Straight	5/16"	0.58"
1/4 PF 3/4X65	65°	1/4"	0.75"

Buttonhead

Part No.	Type	Thread	Length
1/8 PTF 3/4 BH	Straight	1/8" PTF Short	0.75"
1/4 NPT 13/16 BH	Straight	1/4" NPT	0.82"

Stainless Steel

Part No.	Type	Thread	Length
1/4-28T13/16X45SS	45°	1/4"-28 Taper	0.80"
1/4-28T3/4X90SS	90°	1/4"-28 Taper	0.75"
1/8 SAE 21/32 SS	Straight	1/8" PTF	0.62"
1/8 PTF 1X45SS	45°	1/8" PTF	0.99"
1/8 PTF13/16X90SS	90°	1/8" PTF	0.82"
1/4 PTF 13/16SS	Straight	1/4" PTF	0.82"
1/4 PF 1/2SS	Drive	3/16" Drill	0.50"

Steel BSP Threads

Part No.	Type	Thread	Length
1/4-19BSP	Straight	1/4" PTF	0.80"
1/4-19X45BSP	45°	1/4"-19 Taper	1.11"
1/4-19X67.5BSP	67.5°	1/4"-19 Taper	0.99"
1/4-19X90BSP	90°	1/4"-19 Taper	0.92"
1/8 -28BSP	Straight	1/8" PTF	0.60"
1/8 -28X45BSP	45°	1/8" PTF	0.95"
1/8-28X67.5BSP	67.5°	1/8" PTF	0.81"
1/8-28X90BSP	90°	3/16" Drill	0.75"

Stainless Steel BSP Threads

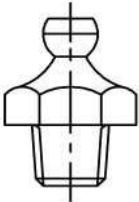
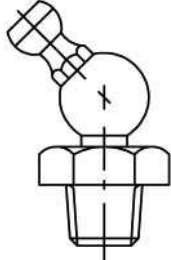
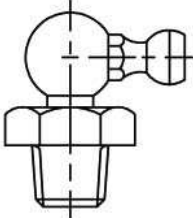
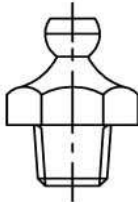
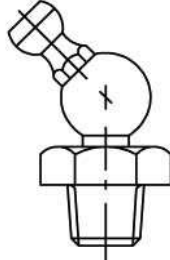
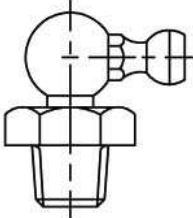
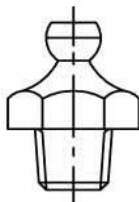
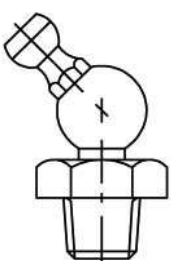
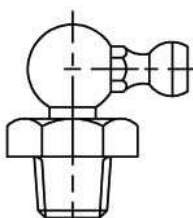
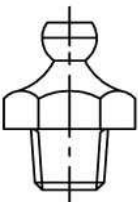
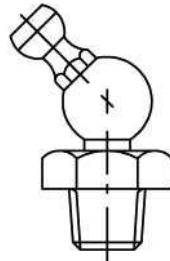
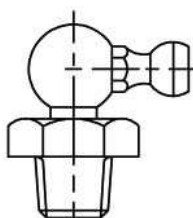
Part No.	Type	Thread	Length
1/4-19BSP SS	Straight	1/4" PTF	0.80"
1/4-19X45BSP SS	45°	1/4"-19 Taper	1.11"
1/4-19X67.5BSP SS	67.5°	1/4"-19 Taper	0.99"
1/4-19X90BSP SS	90°	1/4"-19 Taper	0.93"
1/8 -28BSP SS	Straight	1/8" PTF	0.60"
1/8 -28X45BSP SS	45°	1/8" PTF	0.91"
1/8-28X67.5BSP SS	67.5°	1/8" PTF	0.81"
1/8-28X90BSP SS	90°	3/16" Drill	0.75"

Metric Grease Fitting Assortment Kit

DIN 71412

METRIC STEEL GREASE FITTINGS IN PLASTIC BOX
(10) PCS. PER SIZE

12 KIT

					
6x1	6x1x45	6x1x90	8x1	8x1x45	8x1x90
					
10x1	10x1x45	10x1x90	8x1.25	10x1.5	10x1.5x45