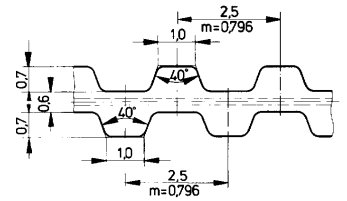


Metric Synchronous Belts

POLYURETHANE WITH STEEL CORDS*



T2.5 (2.5 mm Pitch)

T2.5 Belt Length	T2.5D Belt Length	No. Teeth
2.5/55		22
2.5/120		48
2.5/145		58
2.5/160		64
2.5/177		71
2.5/180		72
2.5/182		73
2.5/200		80
2.5/230		92
2.5/245		98
2.5/265		106
2.5/285		114
2.5/290		116
2.5/305		122
2.5/317	2.5D317	127
2.5/330		132
2.5/380		152
2.5/420		168
2.5/480	2.5D457	183
2.5/500		192
2.5/500		200
2.5/600		240
2.5/620		248
2.5/650		260
2.5/680		272
2.5/780		312
2.5/880		352
2.5/915		366
2.5/950		380
2.5/1300		520

Standard Belt Width (mm)	6	7	8	10	11	12	14	16	20	25	32	50
--------------------------	---	---	---	----	----	----	----	----	----	----	----	----

Ordering Example:

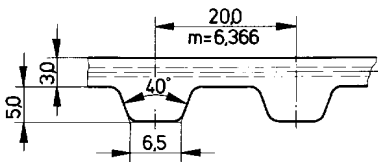
2.5D317.6
 2.5----- Pitch
 D----- Double Sided
 317----- Length (mm)
 6----- Width (mm)

2.5D317.6
 2.5----- Pitch
 D----- Double Sided
 317----- Length (mm)
 6----- Width (mm)

*Kevlar material available upon request.

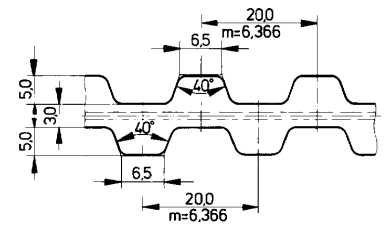
Note: Very narrow belts, such as 4 mm or 6 mm, have a reduced number of steel cords and are only suitable for light loads. Special wire configurations for narrow widths are available by special quote.





Metric Synchronous Belts

POLYURETHANE WITH STEEL CORDS*



T20 (20 mm Pitch)

T20 Belt Length	T20D Belt Length	No. Teeth
20.1260		63
20.1460		73
20.1780		89
20.1880		94
20.2360		118
20.2600	20D2600	130
20.3100		155
20.3620	20D3620	181

Standard Belt Width (mm)	6	7	8	10	11	12	14	16	20	25	32	50	60	75	100
--------------------------	---	---	---	----	----	----	----	----	----	----	----	----	----	----	-----

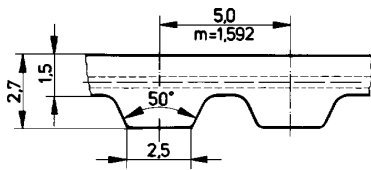
Ordering Example:

20.1260.6
 20----- Pitch
 1260----- Length (mm)
 6----- Width (mm)

20D2600.12
 20----- Pitch
 D----- Double Sided
 2600----- Length (mm)
 12----- Width (mm)

*Kevlar material available upon request.

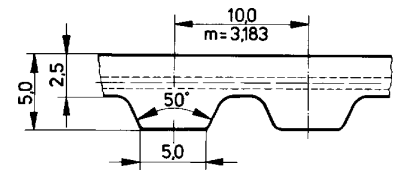
Note: Very narrow belts, such as 4 mm or 6 mm, have a reduced number of steel cords and are only suitable for light loads. Special wire configurations for narrow widths are available by special quote.



Metric Synchronous Belts

POLYURETHANE WITH STEEL CORDS*

AT PROFILE



T3 AT (3 mm Pitch)

Type	Belt Length (mm)	No. Teeth
3A150	150	50
3A201	201	67
3A252	252	84
3A267	267	89
3A270	270	90
3A300	300	100
3A351	351	117
3A399	399	133
3A417	417	139
3A450	450	150
3A501	501	167
3A549	549	183
3A600	600	200
3A639	639	213
3A900	900	300
3A1011	1011	337

T5 AT (5 mm Pitch)

Type	Belt Length (mm)	No. Teeth
5A225	225	45
5A255	255	51
5A260	260	52
5A280	280	56
5A300	300	60
5A330	330	66
5A340	340	68
5A375	375	75
5A390	390	78
5A420	420	84
5A450	450	90
5A455	455	91
5A480	480	96
5A500	500	100
5A525	525	105
5A545	545	109
5A600	600	120
5A610	610	122
5A620	620	124
5A630	630	126
5A660	660	132
5A710	710	142
5A720	720	144
5A750	750	150
5A780	780	156
5A825	825	165
5A860	860	172
5A975	975	195
5A1050	1050	210
5A1125	1125	225
5A1500	1500	300
5A1750	1750	350
5A2000	2000	400

T10 AT (10 mm Pitch)

Type	Belt Length (mm)	No. Teeth
10A500	500	50
10A560	560	56
10A580	580	58
10A600	600	60
10A610	610	61
10A660	660	66
10A700	700	70
10A730	730	73
10A780	780	78
10A800	800	80
10A840	840	84
10A880	880	88
10A890	890	89
10A920	920	92
10A960	960	96
10A980	980	98
10A1000	1000	100
10A1010	1010	101
10A1050	1050	105
10A1080	1080	108
10A1100	1100	110
10A1150	1150	115
10A1200	1200	120
10A1210	1210	121
10A1250	1250	125
10A1280	1280	128
10A1300	1300	130
10A1320	1320	132
10A1350	1350	135
10A1360	1360	136
10A1400	1400	140
10A1420	1420	142
10A1480	1480	148
10A1500	1500	150
10A1600	1600	160
10A1700	1700	170
10A1720	1720	172
10A1800	1800	180
10A1860	1860	186
10A1940	1940	194

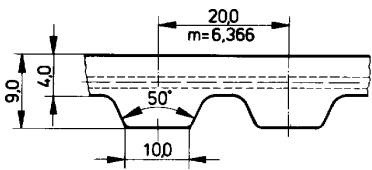
Standard Belt Width (mm)	6	7	8	10	11	12	14	16	20	25	32	50	60	75	100
--------------------------	---	---	---	----	----	----	----	----	----	----	----	----	----	----	-----

Ordering Example:

5A225.6
 5A----- Pitch
 225----- Length (mm)
 6----- Width (mm)

*Kevlar material available upon request.

Note: Very narrow belts, such as 4 mm or 6 mm, have a reduced number of steel cords and are only suitable for light loads. Special wire configurations for narrow widths are available by special quote.

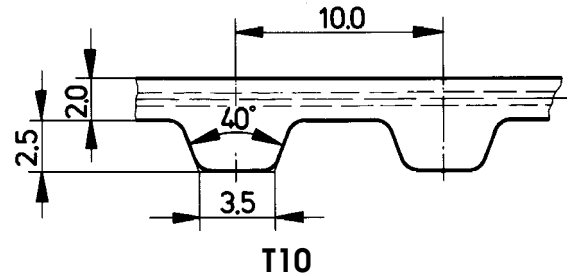


Metric Synchronous Belts

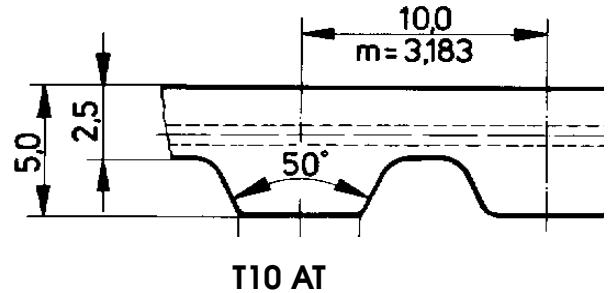
POLYURETHANE WITH STEEL CORDS*

T20 AT (20 mm Pitch, AT Profile)

Type	Belt Length (mm)	No. Teeth
20A1000	1000	50
20A1100	1100	55
20A1200	1200	60
20A1260	1260	63
20A1500	1500	75
20A1600	1600	80
20A1700	1700	85
20A1760	1760	88
20A1800	1800	90
20A1900	1900	95
20A1960	1960	98



COMPARISON BETWEEN STANDARD AND "AT" PROFILES



Standard Belt Width (mm)	6	7	8	10	11	12	14	16	20	25	32	50	60	75	100
--------------------------	---	---	---	----	----	----	----	----	----	----	----	----	----	----	-----

Ordering Example:

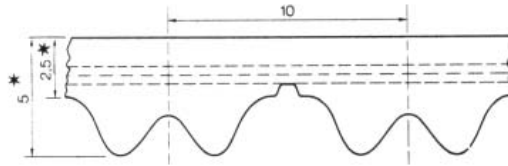
20A1000.6
 20A----- Pitch
 1000----- Length (mm)
 6----- Width (mm)

*Kevlar material available upon request.

Note: Very narrow belts, such as 4 mm or 6 mm, have a reduced number of steel cords and are only suitable for light loads. Special wire configurations for narrow widths are available by special quote.

High Power Timing Belts

"ATP 10"



Type	No. Teeth
10ATP630 ¹	63
10ATP660 ¹	66
10ATP700 ¹	70
10ATP780 ¹	78
10ATP840 ¹	84
10ATP890 ¹	89
10ATP920 ¹	92
10ATP1010 ¹	101
10ATP1080 ¹	108
10ATP1150 ¹	115
10ATP1280 ¹	128
10ATP1400 ¹	140
10ATP1500 ²	150
10ATP1600 ²	160
10ATP1650 ¹	165
10ATP1700 ²	170
10ATP1760 ¹	176
10ATP1800 ¹	180
10ATP1900 ²	190
10ATP2000 ²	200
10ATP2120 ²	

Type	No. Teeth
10ATP2240 ²	212
10ATP2360 ²	224
10ATP2500 ²	236
10ATP2650 ²	250
	265
10ATP2800 ²	
10ATP3000 ²	280
10ATP3150 ²	300
10ATP3350 ²	315
10ATP3550 ²	335
	355
10ATP3750 ²	
10ATP4000 ²	375
10ATP4250 ²	400
10ATP4500 ²	425
10ATP4750 ²	450
	475
10ATP5000 ²	
10ATP5300 ²	500
10ATP5600 ²	530
10ATP6000 ²	560
10ATP6300 ²	600
	630

Standard Belt Width (mm)	16	25	32	50	75	100
--------------------------	----	----	----	----	----	-----

¹Material: cast PUR DADU 9311

²Material: PUR 92° shore A

Ordering Example:

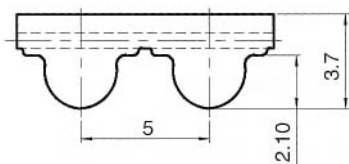
10ATP630.16
 630 ----- Length (mm)
 16 ----- Width (mm)

HTD Synchronous Belts

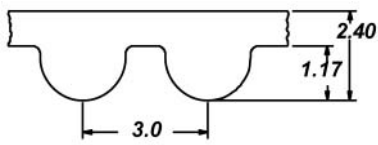
Polyurethane with Steel Cords

3mm Pitch

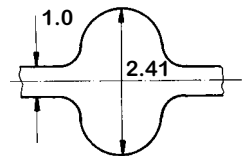
5mm Pitch



Belt Part No.	Teeth No.	Belt Part No.	Teeth No.
PU 150-3m	50	PU 500-5m	100
PU 174-3m	58	PU 525-5m	105
PU 312-3m	104	PU 535-5m	107
PU 321-3m	107	PU 550-5m	110
PU 357-3m	119	PU 600-5m	120
PU 486-3m	162	PU 635-5m	127
PU 669-3m	223	PU 675-5m	135
		PU 700-5m	140
		PU 740-5m	148
		PU 890-5m	178



HTD[®] Synchronous Belts



3 mm Pitch

Belt Length	Belt Length Double Pitch	No. Teeth
111-3 M	-	37
117-3 M	-	39
120-3 M	-	40
123-3 M	-	41
126-3 M	-	42
129-3 M	-	43
141-3 M	-	47
144-3 M	-	48
150-3 M	-	50
156-3 M	-	52
159-3 M	-	53
165-3 M	-	55
168-3 M	-	56
171-3 M	-	57
174-3 M	-	58
177-3 M	-	59
180-3 M	-	60
183-3 M	-	61
186-3 M	-	62
192-3 M	-	64
195-3 M	-	65
201-3 M	-	67
204-3 M	-	68
207-3 M	-	69
210-3 M	-	70
213-3 M	-	71
216-3 M	-	72
225-3 M	-	75
237-3 M	-	79
240-3 M	-	80
243-3 M	-	81
246-3 M	-	82
249-3 M	-	83
252-3 M	-	84
255-3 M	-	85
261-3 M	-	87
264-3 M	-	88
267-3 M	-	89
276-3 M	-	92
282-3 M	-	94
285-3 M	-	95
288-3 M	-	96
291-3 M	-	97
294-3 M	-	98
300-3 M	-	100
306-3 M	-	102
312-3 M	-	104
315-3 M	-	105
318-3 M	-	106
330-3 M	-	110
333-3 M	-	111
336-3 M	-	112
339-3 M	-	113
345-3 M	-	115
357-3 M	-	119
363-3 M	-	121
366-3 M	-	122
384-3 M	-	128
390-3 M	-	130
393-3 M	-	131
420-3 M	-	140

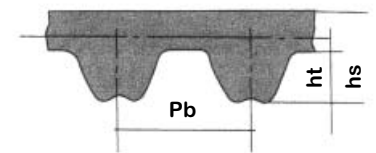
3 mm Pitch

Belt Length	Belt Length Double Pitch	No. Teeth
426-3 M	-	142
447-3 M	-	149
462-3 M	-	154
474-3 M	-	158
477-3 M	-	159
480-3 M	-	160
483-3 M	-	161
486-3 M	-	162
489-3 M	-	163
495-3 M	-	165
501-3 M	D501 3M	167
513-3 M	D513 3M	171
519-3 M	-	173
522-3 M	D522 3M	174
525-3 M	D525 3M	175
531-3 M	D531 3M	177
537-3 M	D537 3M	179
558-3 M	-	186
564-3 M	D564 3M	188
570-3 M	-	190
-	D576 3M	192
582-3 M	-	194
591-3 M	-	197
594-3 M	-	198
597-3 M	D597 3M	199
600-3 M	-	200
606-3 M	D606 3M	202
-	D609 3M	203
612-3 M	D612 3M	204
615-3 M	-	205
633-3 M	D633 3M	211
-	D639 3M	213
648-3 M	-	216
669-3 M	D669 3M	223
672-3 M	-	224
675-3 M	D675 3M	225
-	D699 3M	233
708-3 M	-	236
711-3 M	D711 3M	237
738-3 M	-	246
-	D750 3M	250
753-3 M	D753 3M	251
-	D801 3M	267
804-3 M	-	268
-	D813 3M	271
816-3 M	-	272
822-3 M	-	274
843-3 M	D843 3M	281
882-3 M	-	294
-	D885 3M	295
888-3 M	-	296
-	D936 3M	312
945-3 M	-	315
960-3 M	-	320
1041-3 M	-	347
1062-3 M	-	354
1068-3 M	-	356
1071-3 M	D1071 3M	357
1125-3 M	D1125 3M	375
1176-3 M	-	392
1245-3 M	D1245 3M	418

3 mm Pitch

Belt Length	Belt Length Double Pitch	No. Teeth
-	D1260 3M	420
1263-3 M	D1263 3M	421
-	D1344 3M	448
-	D1401 3M	467
1500-3 M	-	500
1530-3 M	-	510
1569-3 M	D1569 3M	523
1587-3 M	-	529
1589-3 M	-	530
-	D1800 3M	600
1863-3 M	-	621
-	D2388 3M	796
-	D2640 3M	880
-	D3000 3M	1000

Note:
 American Metric Corporation's
 Advanced Polymer Group has
 developed a new state-of-the-art
 revolutionary molding process
 whereby special profiles can be
 produced at very minimal cost.
 If you need it, We can produce it.



Also Available in RPP Tooth

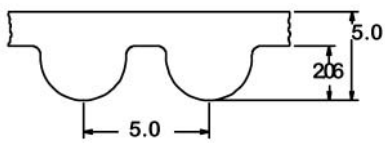
Standard Belt Width (mm)	6	9	15
--------------------------	---	---	----

Ordering Example:

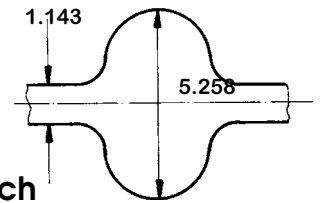
1113M6
 111----- Length (mm)
 3M----- Pitch
 6----- Width (mm)

Ordering Example:

DG633M6
 D----- Double
 633----- Length (mm)
 3M----- Pitch
 6----- Width (mm)



HTD[®] Synchronous Belts



5 mm Pitch

Belt Length	Belt Length Double Pitch	No. Teeth
120-5 M	-	24
125-5 M	-	25
180-5 M	-	36
225-5 M	-	45
255-5 M	-	51
265-5 M	-	53
270-5 M	-	54
275-5 M	-	55
280-5 M	-	56
295-5 M	-	59
300-5 M	-	60
305-5 M	-	61
325-5 M	-	65
330-5 M	-	66
340-5 M	-	68
345-5 M	-	69
350-5 M	-	70
355-5 M	-	71
360-5 M	-	72
365-5 M	-	73
370-5 M	-	74
375-5 M	-	75
385-5 M	-	77
400-5 M	-	80
405-5 M	-	81
415-5 M	-	83
425-5 M	D425 5M	85
450-5 M	-	90
460-5 M	-	92
475-5 M	D475 5M	95
490-5 M	-	98
500-5 M	D500 5M	100
520-5 M	D520 5M	104
525-5 M	-	105
535-5 M	D535 5M	107
540-5 M	D540 5M	108
550-5 M	D550 5M	110
560-5 M	D560 5M	112
565-5 M	D565 5M	113
575-5 M	D575 5M	115
580-5 M	-	116
600-5 M	D600 5M	120
610-5 M	-	122
615-5 M	D615 5M	123
620-5 M	D620 5M	124
625-5 M	D625 5M	125
630-5 M	D630 5M	126
635-5 M	D635 5M	127
640-5 M	D640 5M	128
645-5 M	D645 5M	129
650-5 M	-	130
-	D655 5M	131
665-5 M	D655 5M	133
670-5 M	D670 5M	134
-	D690 5M	138
-	D695 5M	139
700-5 M	D700 5M	140
710-5 M	D710 5M	142
720-5 M	-	144
740-5 M	D740 5M	148
-	D745 5M	149

5 mm Pitch

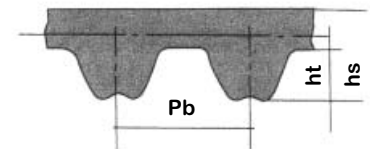
Belt Length	Belt Length Double Pitch	No. Teeth
750-5 M	D750 5M	150
755-5 M	D755 5M	151
-	D770 5M	154
775-5 M	-	155
800-5 M	D800 5M	160
-	D810 5M	162
825-5 M	D825 5M	165
-	D830 5M	166
835-5 M	D835 5M	167
-	D845 5M	169
850-5 M	D850 5M	170
860-5 M	D860 5M	172
-	D870 5M	174
890-5 M	D890 5M	178
900-5 M	D900 5M	180
-	D920 5M	184
925-5 M	D925 5M	185
-	D930 5M	186
935-5 M	D935 5M	187
940-5 M	D940 5M	188
950-5 M	D950 5M	190
-	D960 5M	192
965-5 M	-	193
-	D975 5M	195
980-5 M	-	196
1000-5 M	D1000 5M	200
-	D1025 5M	205
1035-5 M	-	207
1050-5 M	D1050 5M	210
1100-5 M	D1100 5M	220
1125-5 M	D1125 5M	225
1135-5 M	-	227
-	D1145 5M	229
1150-5 M	-	230
-	D1180 5M	236
-	D1185 5M	237
1200-5 M	D1200 5M	240
-	D1225 5M	245
1270-5 M	D1270 5M	254
-	D1280 5M	256
-	D1295 5M	259
1300-5 M	D1300 5M	260
-	D1350 5M	270
-	D1380 5M	276
-	D1400 5M	280
1420-5 M	D1420 5M	284
1425-5 M	-	285
1450-5 M	-	290
-	D1455 5M	291
1500-5 M	D1500 5M	300
1595-5 M	D1595 5M	319
1600-5 M	-	320
-	D1615 5M	323
1690-5 M	-	338
-	D1700 5M	340
1720-5 M	-	344
1790-5 M	-	358
1800-5 M	D1800 5M	360
1870-5 M	D1870 5M	374
1895-5 M	-	379
2000-5 M	D2000 5M	400

5 mm Pitch

Belt Length	Belt Length Double Pitch	No. Teeth
-	D2050 5M	410
2100-5 M	-	420
2110-5 M	-	422
2350-5 M	D2350 5M	470
2525-5 M	-	505
-	D3255 5M	651
-	D3750 5M	750

Note:

American Metric Corporation's Advanced Polymer Group has developed a new state-of-the-art revolutionary molding process whereby special profiles can be produced at very minimal cost. If you need it, We can produce it.



Also Available in RPP Tooth

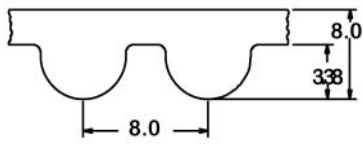
Standard Belt Width (mm)	9	15	25
--------------------------	---	----	----

Ordering Example:

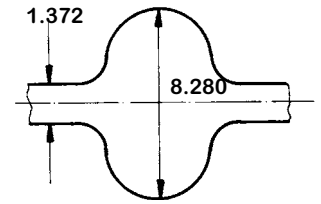
1205M9
 120----- Length (mm)
 5M----- Pitch
 9----- Width (mm)

Ordering Example:

D4255M9
 D ----- Double
 425----- Length (mm)
 5M----- Pitch
 9----- Width (mm)



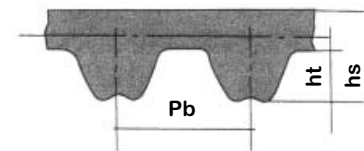
HTD® Synchronous Belts



8 mm Pitch

Belt Length	Belt Length Double Pitch	No. Teeth
288-8 M	-	36
320-8M	-	40
352-8 M	-	44
376-8M	-	47
416-8 M	-	52
424-8M	-	53
472-8 M	-	59
480-8M	D480 8M	60
512-8M	D512 8M	64
520-8 M	-	65
536-8M	D536 8M	67
560-8M	D560 8M	70
576-8M	D576 8M	72
600-8M	D600 8M	75
608-8M	-	76
624-8M	D624 8M	78
632-8M	D632 8M	79
640-8M	D640 8M	80
656-8M	D656 8M	82
680-8 M	D680 8M	85
712-8 M	D712 8M	89
720-8M	D720 8M	90
760-8M	D760 8M	95
776-8M	D776 8M	97
784-8M	D784 8M	98
800-8M	D800 8M	100
824-8 M	-	103
840-8M	D840 8M	105
848-8 M	-	106
856-8 M	D856 8M	107
-	D864 8M	108
-	D872 8M	109
880-8M	D880 8M	110
896-8 M	D896 8M	112
912-8M	D912 8M	114
920-8M	D920 8M	115
-	D928 8M	116
960-8M	D960 8M	120
-	D968 8M	121
976-8M	-	122
1000-8M	D1000 8M	125
1040-8M	D1040 8M	130
1056-8 M	D1056 8M	132
1064-8M	-	133
1080-8M	D1080 8M	135
1096-8 M	-	137
-	D1104 8M	138
1120-8M	D1120 8M	140
1128-8M	-	141
-	D1136 8M	142
1152-8M	D1152 8M	144
1160-8M	-	145
-	D1168 8M	146
1184-8 M	D1184 8M	148
1200-8M	D1200 8M	150
1216-8M	D1216 8M	152
1224-8M	D1224 8M	153
1248-8 M	D1248 8M	156
1256-8M	D1256 8M	157
1264-8M	D1264 8M	158
1280-8M	D1280 8M	160

Belt Length	Belt Length Double Pitch	No. Teeth
1304-8M	D1304 8M	163
-	D1312 8M	164
1328-8M	D1328 8M	166
1344-8 M	-	168
1360-8M	D1360 8M	170
-	D1392 8M	174
1400-8 M	D1400 8M	175
1424-8M	D1424 8M	178
1432-8M	-	179
1440-8M	D1440 8M	180
-	D1480 8M	185
1520-8M	D1520 8M	190
1552-8 M	-	194
-	D1576 8M	197
1600-8M	D1600 8M	200
1680-8 M	-	210
1696-8M	D1696 8M	212
1728-8 M	-	216
1760-8M	D1760 8M	220
-	D1792 8M	224
1800-8M	D1800 8M	225
-	D1896 8M	237
1904-8 M	D1904 8M	238
1936-8 M	-	242
2000-8M	D2000 8M	250
2104-8 M	D2104 8M	263
2080-8M	-	260
2240-8M	D2240 8M	280
2248-8M	D2248 8M	281
2272-8M	D2272 8M	284
-	D2392 8M	299
2400-8M	D2400 8M	300
2504-8 M	-	313
2600-8M	D2600 8M	325
2800-8M	D2800 8M	350
3008-8 M	-	376
3048-8 M	D3048 8M	381
-	D3120 8M	390
3280-8 M	-	410
3408-8 M	-	426
3600-8 M	-	450
3808-8 M	-	476
4400-8M	D4400 8M	550



Also Available in RPP Tooth

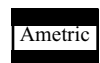
Standard Belt Width (mm)	20	30	50	85
--------------------------	----	----	----	----

Ordering Example:

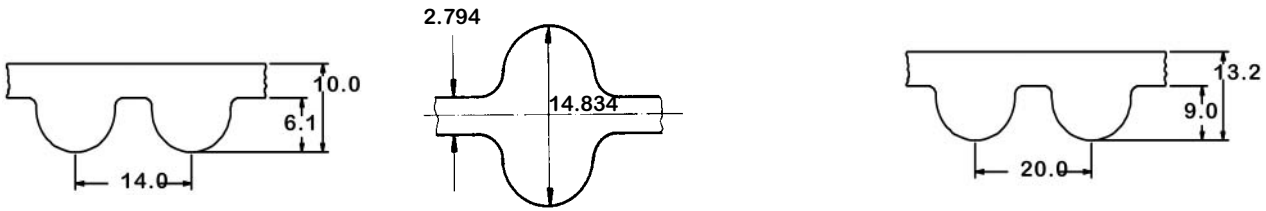
376M20
 376----- Length (mm)
 8M----- Pitch
 20----- Width (mm)

Ordering Example:

D480M20
 D ----- Double
 480----- Length (mm)
 8M----- Pitch
 20----- Width (mm)



HTD® Synchronous Belts



14 mm Pitch

Belt Length	Belt Length Double Pitch	No. Teeth
826-14M	-	59
924-14M	-	66
966-14M	D966 14M	69
-	D1036 14M	74
1092-14M	-	78
-	D1120 14M	80
1190-14M	D1190 14M	85
-	D1246 14M	89
1400-14M	D1400 14M	100
-	D1414 14M	101
-	D1540 14M	110
-	D1568 14M	112
1610-14M	D1610-14M	115
-	D1750 14M	125
1778-14M	D1778-14M	127
-	D1806 14M	129
-	D1848 14M	132
1890-14M	D1890-14M	135
-	D1960 14M	140
-	D2002 14M	143
2100-14M	D2100-14M	150
-	D2198 14M	157
-	D2240 14M	160
2310-14M	D2310-14M	165
2450-14M	D2450-14M	175
2590-14M	D2590-14M	185
2800-14M	D2800-14M	200
-	D3108 14M	222
3150-14M	D3150-14M	225
3360-14M	-	240
3500-14M	D3500 14M	250
3850-14M	-	275
4004-14M	-	286
4326-14M	-	309
4578-14M	-	327

20 mm Pitch

Belt Length	Belt Length Double Pitch	No. Teeth
2000-20M		100
2500-20M		125
3200-20M		160
3220-20M		161
3400-20M		170
3800-20M		190
4200-20M		210
4600-20M		230
5000-20M		250
5200-20M		260
5400-20M		270
5600-20M		280
5800-20M		290
6000-20M		300

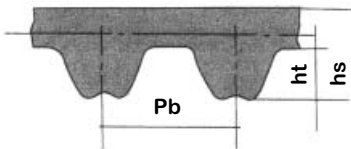
Standard Belt Width (mm)	40	55	85	115	170
--------------------------	----	----	----	-----	-----

Standard Belt Width (mm)	115	170	230	290	340
--------------------------	-----	-----	-----	-----	-----

Ordering Example:

82614M40
 826----- Length (mm)
 14M----- Pitch
 40----- Width (mm)

D161014M40
 D----- Double Pitch
 1610----- Length (mm)
 14M----- Pitch
 40----- Width (mm)

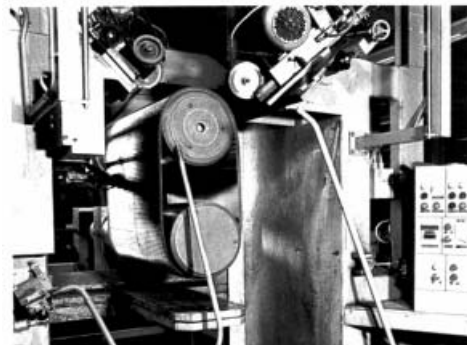


Ordering Example:

200020M115
 2000----- Length (mm)
 20M----- Pitch
 115----- Width (mm)

RPP Ordering Example:

120R5M15
 120----- Length (mm)
 R5M----- Pitch
 15----- Width (mm)



Produced in our South Carolina Plant

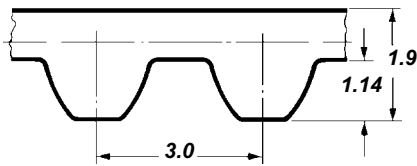
Also Available in RPP Tooth

American Metric® Corporation



GROUP: 093

1-093-110606



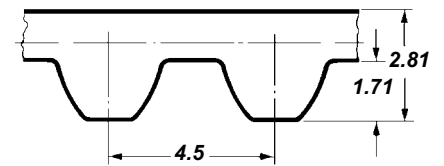
3 mm Pitch

Belt No.	Pitch Length (mm)	No. Teeth
111 S3M	111	37
117 S3M	117	39
120 S3M	120	40
123 S3M	123	41
126 S3M	126	42
129 S3M	129	43
141 S3M	141	47
144 S3M	144	48
150 S3M	150	50
156 S3M	156	52
159 S3M	159	53
165 S3M	165	55
168 S3M	168	56
171 S3M	171	57
174 S3M	174	58
177 S3M	177	59
180 S3M	180	60
183 S3M	183	61
186 S3M	186	62
192 S3M	192	64
195 S3M	195	65
201 S3M	201	67
204 S3M	204	68
207 S3M	207	69
210 S3M	210	70
213 S3M	213	71
216 S3M	216	72
225 S3M	225	75
237 S3M	237	79
240 S3M	240	80
243 S3M	243	81
246 S3M	246	82
249 S3M	249	83
252 S3M	252	84
255 S3M	255	85
261 S3M	261	87
264 S3M	264	88
267 S3M	267	89
276 S3M	276	92
282 S3M	282	94
285 S3M	285	95
288 S3M	288	96
291 S3M	291	97
294 S3M	294	98
300 S3M	300	100
306 S3M	306	102
312 S3M	312	104
315 S3M	315	105
318 S3M	318	106
330 S3M	330	110
333 S3M	333	111
336 S3M	336	112
339 S3M	339	113
345 S3M	345	115
357 S3M	357	119
363 S3M	363	121
366 S3M	366	122
384 S3M	384	128
390 S3M	390	130
393 S3M	393	131
420 S3M	420	140

"Super Torque" Synchronous Belts

3 mm Pitch

Belt No.	Pitch Length (mm)	No. Teeth
426 S3M	426	142
447 S3M	447	149
459 S3M	459	153
462 S3M	462	154
474 S3M	474	158
477 S3M	477	159
480 S3M	480	160
483 S3M	483	161
486 S3M	486	162
489 S3M	489	163
495 S3M	495	165
501 S3M	501	167
504 S3M	504	168
507 S3M	507	169
513 S3M	513	171
519 S3M	519	173
522 S3M	522	174
525 S3M	525	175
531 S3M	531	177
537 S3M	537	179
558 S3M	558	186
564 S3M	564	188
570 S3M	570	190
573 S3M	573	191
579 S3M	579	193
582 S3M	582	194
585 S3M	585	195
591 S3M	591	197
594 S3M	594	198
597 S3M	597	199
600 S3M	600	200
606 S3M	606	202
612 S3M	612	204
615 S3M	615	205
621 S3M	621	207
633 S3M	633	211
636 S3M	636	212
648 S3M	648	216
657 S3M	657	219
660 S3M	660	220
669 S3M	669	223
672 S3M	672	224
675 S3M	675	225
681 S3M	681	227
699 S3M	699	233
708 S3M	708	236
711 S3M	711	237
714 S3M	714	238
738 S3M	738	246
750 S3M	750	250
753 S3M	753	251
765 S3M	765	255
789 S3M	789	263
804 S3M	804	268
810 S3M	810	270
816 S3M	816	272
822 S3M	822	274
843 S3M	843	281
882 S3M	882	294
888 S3M	888	296
900 S3M	900	300
945 S3M	945	315



3 mm Pitch

Belt No.	Pitch Length (mm)	No. Teeth
960 S3M	945	320
1041 S3M	960	347
1062 S3M	1041	354
1068 S3M	1062	356
1071 S3M	1068	357
1125 S3M	1071	375
1176 S3M	1125	392
1245 S3M	1176	415
1263 S3M	1245	421
1500 S3M	1263	500
1530 S3M	1500	510
1569 S3M	1530	523
1587 S3M	1569	529
1863 S3M	1587	621
	1863	

4.5 mm Pitch

Belt No.	Pitch Length (mm)	No. Teeth
504 S4.5M	504	112
518 S4.5M	518	115
558 S4.5M	558	124
565 S4.5M	565	125
567 S4.5M	567	126
612 S4.5M	612	136
617 S4.5M	617	137
630 S4.5M	630	140
675 S4.5M	675	150
711 S4.5M	711	158
801 S4.5M	801	178

Note:
American Metric Corporation's Advanced Polymer Group has developed a new state-of-the-art revolutionary molding process whereby special profiles can be produced at very minimal cost. If you need it, We can produce it.

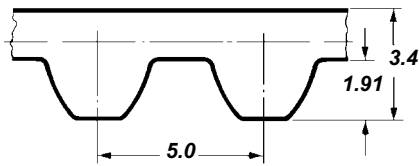
Standard Belt Width (mm)	6	9	15
--------------------------	---	---	----

Ordering Example:

120S3M6
 120----- Length (mm)
 S----- Super Torque
 3M----- Pitch
 6----- Width (mm)

Standard Belt Width (mm)	6	10	15
--------------------------	---	----	----

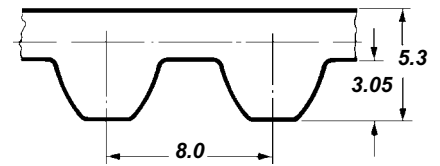
Note: Special widths and constructions available by special order.



5 mm Pitch

Belt No.	Pitch Length (mm)	No. Teeth
120 S5M	120	24
125 S5M	125	25
180 S5M	180	36
225 S5M	225	45
255 S5M	255	51
265 S5M	265	53
270 S5M	270	54
275 S5M	275	55
280 S5M	280	56
295 S5M	295	59
300 S5M	300	60
305 S5M	305	61
325 S5M	325	65
330 S5M	330	66
340 S5M	340	68
345 S5M	345	69
350 S5M	350	70
355 S5M	355	71
360 S5M	360	72
365 S5M	365	73
370 S5M	370	74
375 S5M	375	75
385 S5M	385	77
390 S5M	390	78
400 S5M	400	80
405 S5M	405	81
415 S5M	415	83
425 S5M	425	85
450 S5M	450	90
460 S5M	460	92
475 S5M	475	95
490 S5M	490	98
500 S5M	500	100
520 S5M	520	104
525 S5M	525	105
535 S5M	535	107
540 S5M	540	108
550 S5M	550	110
560 S5M	560	112
565 S5M	565	113
575 S5M	575	115
580 S5M	580	116
600 S5M	600	120
610 S5M	610	122
615 S5M	615	123
620 S5M	620	124
625 S5M	625	125
630 S5M	630	126
635 S5M	635	127
640 S5M	640	128
645 S5M	645	129
650 S5M	650	130
665 S5M	665	133
670 S5M	670	134
675 S5M	675	135
700 S5M	700	140
710 S5M	710	142
720 S5M	720	144
740 S5M	740	148
750 S5M	750	150
755 S5M	755	151

"Super Torque" Synchronous Belts



8 mm Pitch

Belt No.	Pitch Length (mm)	No. Teeth
775 S5M	775	155
800 S5M	800	160
825 S5M	825	165
835 S5M	835	167
850 S5M	850	170
860 S5M	860	172
890 S5M	890	178
900 S5M	900	180
925 S5M	925	185
935 S5M	935	187
940 S5M	940	188
950 S5M	950	190
965 S5M	965	193
980 S5M	980	196
1000 S5M	1000	200
1035 S5M	1035	207
1050 S5M	1050	210
1100 S5M	1100	220
1125 S5M	1125	225
1135 S5M	1135	227
1150 S5M	1150	230
1200 S5M	1200	240
1270 S5M	1270	254
1300 S5M	1300	260
1350 S5M	1350	270
1420 S5M	1420	284
1425 S5M	1425	285
1450 S5M	1450	290
1500 S5M	1500	300
1595 S5M	1595	319
1600 S5M	1600	320
1690 S5M	1690	338
1720 S5M	1720	344
1790 S5M	1790	358
1800 S5M	1800	360
1870 S5M	1870	374
1895 S5M	1895	379
2000 S5M	2000	400
2100 S5M	2100	420
2110 S5M	2110	422
2350 S5M	2350	470
2525 S5M	2525	505

8 mm Pitch

Belt No.	Pitch Length (mm)	No. Teeth
288 S8M	288	36
320 S8M	320	40
352 S8M	352	44
376 S8M	376	47
416 S8M	416	52
424 S8M	424	53
440 S8M	440	55
472 S8M	472	59
480 S8M	480	60
512 S8M	512	64
520 S8M	520	65
536 S8M	536	67

Belt No.	Pitch Length (mm)	No. Teeth
560 S8M	560	70
576 S8M	576	72
600 S8M	600	75
608 S8M	608	76
624 S8M	624	78
632 S8M	632	79
640 S8M	640	80
656 S8M	656	82
680 S8M	680	85
688 S8M	688	86
696 S8M	696	87
712 S8M	712	89
720 S8M	720	90
728 S8M	728	91
736 S8M	736	92
760 S8M	760	95
768 S8M	768	96
776 S8M	776	97
784 S8M	784	98
792 S8M	792	99
800 S8M	800	100
824 S8M	824	103
840 S8M	840	105
848 S8M	848	106
856 S8M	856	107
864 S8M	864	108
880 S8M	880	110
896 S8M	896	112
912 S8M	912	114
920 S8M	920	115
944 S8M	944	118
960 S8M	960	120
976 S8M	976	122
992 S8M	992	124
1000 S8M	1000	125
1024 S8M	1024	128
1032 S8M	1032	129
1040 S8M	1040	130
1056 S8M	1056	132
1064 S8M	1064	133
1072 S8M	1072	134
1080 S8M	1080	135
1096 S8M	1096	137
1120 S8M	1120	140
1128 S8M	1128	141
1136 S8M	1136	142
1152 S8M	1152	144
1160 S8M	1160	145
1168 S8M	1168	146
1176 S8M	1176	147
1184 S8M	1184	148
1192 S8M	1192	149
1200 S8M	1200	150
1208 S8M	1208	151
1216 S8M	1216	152
1224 S8M	1224	153
1240 S8M	1240	155
1248 S8M	1248	156
1256 S8M	1256	157
1264 S8M	1264	158
1280 S8M	1280	160

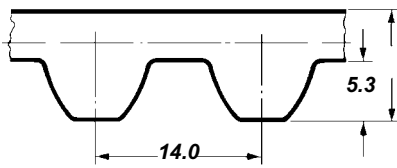
Ordering Example:

440S8M20
 440----- Length (mm)
 S----- Super Torque
 8M----- Pitch
 20----- Width (mm)

Standard Belt Width (mm)	9	15	25
--------------------------	---	----	----

Note: Special widths and constructions available by special order.

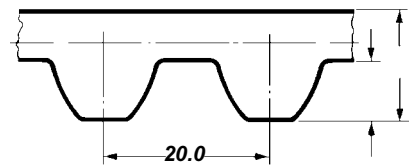
Standard Belt Width (mm)	20	30	50	85
--------------------------	----	----	----	----



8 mm Pitch

Belt No.	Pitch Length (mm)	No. Teeth
1304 S8M	1304	163
1312 S8M	1312	164
1328 S8M	1328	166
1344 S8M	1344	168
1352 S8M	1352	169
1360 S8M	1360	170
1400 S8M	1400	175
1408 S8M	1408	176
1424 S8M	1424	178
1432 S8M	1432	179
1440 S8M	1440	180
1480 S8M	1480	185
1520 S8M	1520	190
1552 S8M	1552	194
1600 S8M	1600	200
1680 S8M	1680	210
1696 S8M	1696	212
1728 S8M	1728	216
1760 S8M	1760	220
1776 S8M	1776	222
1800 S8M	1800	225
1816 S8M	1816	227
1904 S8M	1904	238
1912 S8M	1912	239
1936 S8M	1936	242
2000 S8M	2000	250
2080 S8M	2080	260
2104 S8M	2104	263
2240 S8M	2240	280
2248 S8M	2248	281
2272 S8M	2272	284
2392 S8M	2392	299
2400 S8M	2400	300
2496 S8M	2496	312
2504 S8M	2504	313
2600 S8M	2600	325
2800 S8M	2800	350
3008 S8M	3008	376
3048 S8M	3048	381
3200 S8M	3200	400
3280 S8M	3280	410
3408 S8M	3408	426
3600 S8M	3600	450

"Super Torque" Synchronous Belts



14 mm Pitch

Belt No.	Pitch Length (mm)	No. Teeth
826 S14M	826	59
924 S14M	924	66
966 S14M	966	69
1092 S14M	1092	78
1190 S14M	1190	85
1400 S14M	1400	100
1540 S14M	1540	110
1610 S14M	1610	115
1778 S14M	1778	127
1890 S14M	1890	135
2002 S14M	2002	143
2100 S14M	2100	150
2240 S14M	2240	160
2310 S14M	2310	165
2450 S14M	2450	175
2590 S14M	2590	185
2800 S14M	2800	200
3150 S14M	3150	225
3360 S14M	3360	240
3500 S14M	3500	250
3850 S14M	3850	275
4004 S14M	4004	286
4326 S14M	4326	309
4508 S14M	4508	322
5012 S14M	5012	358

Note:
American Metric Corporation's Advanced Polymer Group has developed a new state-of-the-art revolutionary molding process whereby special profiles can be produced at very minimal cost. If you need it, We can produce it.

20 mm Pitch

Belt No.	Pitch Length (mm)	No. Teeth
2000 S20M	2000	100
2500 S20M	2500	125
3200 S20M	3200	160
3220 S20M	3220	161
3400 S20M	3400	170
3800 S20M	3800	190

Standard Belt Width (mm)	20	30	50	85
--------------------------	----	----	----	----

Note: Special widths and constructions available by special order.

Ordering Example:

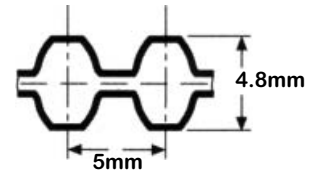
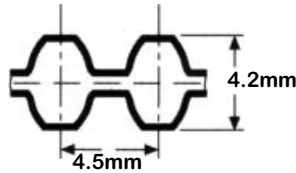
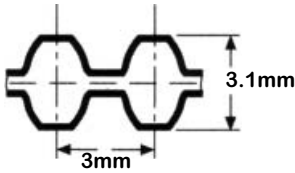
1400S14M40
 1400 ----- Length (mm)
 S ----- Super Torque
 14M ----- Pitch
 40 ----- Width (mm)

Standard Belt Width (mm)	40	55	85	115	170
--------------------------	----	----	----	-----	-----

Standard Belt Width (mm)	115	170	230	290	340
--------------------------	-----	-----	-----	-----	-----



Double "Super Torque" Synchronous Belts



3 mm Pitch

Belt No.	Pitch Length (mm)	No. Teeth
D501 S3M	501	167
D504 S3M	504	168
D507 S3M	507	169
D513 S3M	513	171
D522 S3M	522	174
D525 S3M	525	175
D531 S3M	531	177
D537 S3M	537	179
D564 S3M	564	188
D573 S3M	573	191
D576 S3M	576	192
D579 S3M	579	193
D582 S3M	582	194
D585 S3M	585	195
D597 S3M	597	199
D600 S3M	600	200
D606 S3M	606	202
D609 S3M	609	203
D612 S3M	612	204
D621 S3M	621	207
D633 S3M	633	211
D636 S3M	636	212
D639 S3M	639	213
D657 S3M	657	219
D660 S3M	660	220
D669 S3M	669	223
D675 S3M	675	225
D681 S3M	681	227
D699 S3M	699	233
D711 S3M	711	237
D714 S3M	714	238
D750 S3M	750	250
D753 S3M	753	251
D765 S3M	765	255
D789 S3M	789	263
D801 S3M	801	267
D804 S3M	804	268
D810 S3M	810	270
D813 S3M	813	271
D843 S3M	843	281
D885 S3M	885	295
D900 S3M	900	300
D936 S3M	936	312
D1005 S3M	1005	335
D1050 S3M	1050	350
D1071 S3M	1071	357
D1125 S3M	1125	375
D1245 S3M	1245	415
D1260 S3M	1260	420
D1263 S3M	1263	421
D1344 S3M	1344	448
D1401 S3M	1401	467
D1569 S3M	1569	523
D1800 S3M	1800	600
D2388 S3M	2388	796
D2640 S3M	2640	880
D3000 S3M	3000	1000

Standard Belt Widths

3 mm: 6, 9, 15
 4.5 mm: 6, 10, 15
 5 mm: 9, 15, 25

4.5 mm Pitch

Belt No.	Pitch Length (mm)	No. Teeth
D504 S4.5M	504	112
D518 S4.5M	518	115
D558 S4.5M	558	124
D563 S4.5M	563	125
D567 S4.5M	567	126
D612 S4.5M	612	136
D617 S4.5M	617	137
D630 S4.5M	630	140
D675 S4.5M	675	150
D711 S4.5M	711	158
D801 S4.5M	801	178
D1031 S4.5M	1031	229

5 mm Pitch

Belt No.	Pitch Length (mm)	No. Teeth
D475 S5M	475	95
D500 S5M	500	100
D520 S5M	520	104
D525 S5M	525	105
D535 S5M	535	107
D540 S5M	540	108
D550 S5M	550	110
D560 S5M	560	112
D565 S5M	565	113
D575 S5M	575	115
D600 S5M	600	120
D615 S5M	615	123
D625 S5M	625	125
D630 S5M	630	126
D635 S5M	635	127
D640 S5M	640	128
D645 S5M	645	129
D650 S5M	650	130
D655 S5M	655	131
D665 S5M	665	133
D670 S5M	670	134
D675 S5M	675	135
D690 S5M	690	138
D695 S5M	695	139
D700 S5M	700	140
D710 S5M	710	142
D740 S5M	740	148
D745 S5M	745	149
D750 S5M	750	150
D755 S5M	755	151
D770 S5M	770	154
D800 S5M	800	160
D810 S5M	810	162
D825 S5M	825	165
D830 S5M	830	166
D835 S5M	835	167
D845 S5M	845	169
D850 S5M	850	170
D860 S5M	860	172
D870 S5M	870	174
D890 S5M	890	178
D900 S5M	900	180

Ordering Example: D501 S3M 6

D = Double
 501 = Length (mm)
 S = Super Torque
 3M = Pitch
 6 = Width

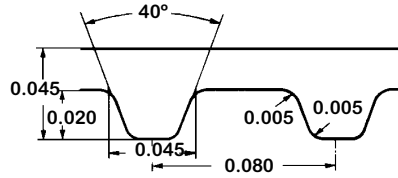
5 mm Pitch

Belt No.	Pitch Length (mm)	No. Teeth
D920 S5M	920	184
D930 S5M	930	186
D935 S5M	935	187
D940 S5M	940	188
D950 S5M	950	190
D960 S5M	960	192
D975 S5M	975	195
D1000 S5M	1000	200
D1025 S5M	1025	205
D1050 S5M	1050	210
D1100 S5M	1100	220
D1125 S5M	1125	225
D1145 S5M	1145	229
D1180 S5M	1180	236
D1185 S5M	1185	237
D1225 S5M	1225	245
D1270 S5M	1270	254
D1280 S5M	1280	256
D1295 S5M	1295	259
D1300 S5M	1300	260
D1350 S5M	1350	270
D1380 S5M	1380	276
D1400 S5M	1400	280
D1420 S5M	1420	284
D1455 S5M	1455	291
D1500 S5M	1500	300
D1595 S5M	1595	319
D1615 S5M	1615	323
D1700 S5M	1700	340
D1800 S5M	1800	360
D1870 S5M	1870	374
D2000 S5M	2000	400
D2050 S5M	2050	410
D2350 S5M	2350	470
D3255 S5M	3255	651
D3750 S5M	3750	750

Note:

American Metric Corporation's Advanced Polymer Group has developed a new state-of-the-art revolutionary molding process whereby special profiles can be produced at very minimal cost. If you need it, We can produce it.

American Standard (Inch Pitch) Synchronous Belts Polyurethane Construction



MXL (0.080") Pitch

Belt No.	Pitch Length		No. Teeth
	(inch)	(mm)	
PU 440MXL	4.40	111.76	55
PU 448MXL	4.48	113.79	56
PU 456MXL	4.56	115.82	57
PU 464MXL	4.64	117.86	58
PU 480MXL	4.80	121.92	60
PU 488MXL	4.88	123.95	61
PU 504MXL	5.04	128.02	63
PU 520MXL	5.20	132.08	65
PU 528MXL	5.28	134.11	66
PU 536MXL	5.36	136.14	67
PU 544MXL	5.44	138.18	68
PU 560MXL	5.60	142.24	70
PU 568MXL	5.68	144.27	71
PU 576MXL	5.76	146.30	72
PU 600MXL	6.00	152.40	75
PU 608MXL	6.08	154.43	76
PU 616MXL	6.16	156.46	77
PU 624MXL	6.24	158.50	78
PU 632MXL	6.32	160.53	79
PU 640MXL	6.40	162.56	80
PU 656MXL	6.56	166.62	82
PU 664MXL	6.64	168.66	83
PU 672MXL	6.72	170.69	84
PU 680MXL	6.80	172.72	85
PU 688MXL	6.88	174.75	86
PU 696MXL	6.96	176.78	87
PU 704MXL	7.04	178.82	88
PU 712MXL	7.12	180.85	89
PU 720MXL	7.20	182.88	90
PU 728MXL	7.28	184.91	91
PU 736MXL	7.36	186.94	92
PU 752MXL	7.52	191.01	94
PU 760MXL	7.60	193.04	95
PU 768MXL	7.68	195.07	96
PU 776MXL	7.76	197.10	97
PU 784MXL	7.84	199.14	98
PU 800MXL	8.00	203.20	100
PU 808MXL	8.08	205.23	101
PU 816MXL	8.16	207.26	102
PU 824MXL	8.24	209.30	103
PU 840MXL	8.40	213.36	105
PU 848MXL	8.48	215.39	106
PU 856MXL	8.56	217.42	107
PU 864MXL	8.64	219.46	108
PU 880MXL	8.80	223.52	110
PU 888MXL	8.88	225.55	111
PU 896MXL	8.96	227.58	112
PU 904MXL	9.04	229.62	113
PU 912MXL	9.12	231.65	114
PU 944MXL	9.44	239.78	118
PU 960MXL	9.60	243.84	120
PU 976MXL	9.76	247.90	122
PU 984MXL	9.84	249.94	123
PU 1000MXL	10.00	254.00	125
PU 1008MXL	10.08	256.03	126
PU 1040MXL	10.40	264.16	130
PU 1048MXL	10.48	266.19	131
PU 1056MXL	10.56	268.22	132
PU 1072MXL	10.72	272.29	134
PU 1080MXL	10.80	274.32	135

Belt No.	Pitch Length		No. Teeth
	(inch)	(mm)	
PU 1112MXL	11.12	282.45	139
PU 1120MXL	11.20	284.48	140
PU 1136MXL	11.36	288.54	142
PU 1152MXL	11.52	292.61	144
PU 1160MXL	11.60	294.64	145
PU 1172MXL	11.72	297.69	147
PU 1184MXL	11.84	300.74	148
PU 1192MXL	11.92	302.77	149
PU 1200MXL	12.00	304.80	150
PU 1216MXL	12.16	308.86	152
PU 1224MXL	12.24	310.90	153
PU 1240MXL	12.40	314.96	155
PU 1272MXL	12.72	323.09	159
PU 1280MXL	12.80	325.12	160
PU 1312MXL	13.12	333.25	164
PU 1320MXL	13.20	335.28	165
PU 1328MXL	13.28	337.31	166
PU 1344MXL	13.44	341.38	168
PU 1360MXL	13.60	345.44	170
PU 1384MXL	13.84	351.54	173
PU 1400MXL	14.00	355.60	175
PU 1440MXL	14.40	365.76	180
PU 1472MXL	14.72	373.89	184
PU 1520MXL	15.20	386.08	190
PU 1536MXL	15.36	390.14	192
PU 1552MXL	15.52	394.21	194
PU 1560MXL	15.60	396.24	195
PU 1600MXL	16.00	406.40	200
PU 1680MXL	16.80	426.72	210
PU 1696MXL	16.96	430.78	212
PU 1728MXL	17.28	438.91	216
PU 1766MXL	17.66	448.56	221
PU 1768MXL	17.68	449.07	221
PU 1800MXL	18.00	457.20	225
PU 1856MXL	18.56	471.42	232
PU 1888MXL	18.88	479.55	236
PU 1920MXL	19.20	487.68	240
PU 1984MXL	19.84	503.94	248
PU 1992MXL	19.92	505.97	249
PU 2000MXL	20.00	508.00	250
PU 2008MXL	20.08	510.03	251
PU 2048MXL	20.48	520.19	256
PU 2120MXL	21.20	538.48	265
PU 2144MXL	21.44	544.58	268
PU 2208MXL	22.08	560.83	276
PU 2240MXL	22.40	568.96	280
PU 2280MXL	22.80	579.12	285
PU 2304MXL	23.04	585.22	288
PU 2320MXL	23.20	589.28	290
PU 2360MXL	23.60	599.44	295
PU 2384MXL	23.84	605.54	298
PU 2400MXL	24.00	609.60	300
PU 2440MXL	24.40	619.76	305
PU 2464MXL	24.64	625.86	308
PU 2480MXL	24.80	629.92	310
PU 2496MXL	24.96	633.98	312
PU 2520MXL	25.20	640.08	315
PU 2544MXL	25.44	646.18	318
PU 2560MXL	25.60	650.24	320
PU 2592MXL	25.92	658.37	324

Belt No.	Pitch Length		No. Teeth
	(inch)	(mm)	
PU 2624MXL	26.24	666.50	328
PU 2656MXL	26.56	674.62	332
PU 2680MXL	26.80	680.72	335
PU 2688MXL	26.88	682.75	336
PU 2776MXL	27.76	705.10	347
PU 2816MXL	28.16	715.26	352
PU 2824MXL	28.24	717.30	353
PU 2880MXL	28.80	731.52	360
PU 2896MXL	28.96	735.58	362
PU 2920MXL	29.20	741.68	365
PU 2968MXL	29.68	753.87	371
PU 2976MXL	29.76	755.90	372
PU 3024MXL	30.24	768.10	378
PU 3040MXL	30.40	772.16	380
PU 3160MXL	31.60	802.64	395
PU 3200MXL	32.00	812.80	400
PU 3240MXL	32.40	822.96	405
PU 3264MXL	32.64	829.06	408
PU 3296MXL	32.96	837.18	412
PU 3440MXL	34.40	873.76	430
PU 3456MXL	34.56	877.82	432
PU 3472MXL	34.72	881.89	434
PU 3624MXL	36.24	920.50	453
PU 3632MXL	36.32	922.53	454
PU 3704MXL	37.04	940.82	463
PU 3712MXL	37.12	942.85	464
PU 3880MXL	38.80	985.52	485
PU 3984MXL	39.84	1011.94	498
PU 4024MXL	40.24	1022.10	503
PU 4032MXL	40.32	1024.13	504
PU 4040MXL	40.40	1026.16	505
PU 4176MXL	41.76	1060.70	522
PU 4248MXL	42.48	1078.99	531
PU 4560MXL	45.60	1158.24	570
PU 4664MXL	46.64	1184.66	583
PU 4800MXL	48.00	1219.20	600
PU 5184MXL	51.84	1316.74	648
PU 6000MXL	60.00	1524.00	750
PU 6080MXL	60.80	1544.32	760
PU 6240MXL	62.40	1584.96	780
PU 8096MXL	80.96	2056.38	1012
PU 8480MXL	84.80	2153.92	1060
PU 9096MXL	90.96	2310.38	1137
PU 10000MXL	100.00	2540.00	1250
PU 10416MXL	104.16	2645.66	1302
PU 11704MXL	117.04	2972.82	1463

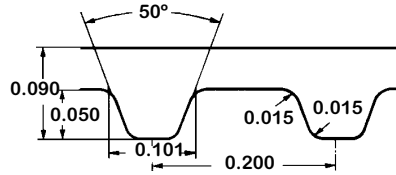
Note:
American Metric Corporation's Advanced Polymer Group has developed a new state-of-the-art revolutionary molding process whereby special profiles can be produced at very minimal cost. If you need it, We can produce it.

Ordering Example:

PU 440 MXL 012
 PU ----- Polyurethane
 440 ----- Length (inch)
 MXL ----- Type
 012 ----- Width

Standard Belt Width (inch)	12	19	25	31
----------------------------	----	----	----	----

American Standard (Inch Pitch) Synchronous Belts Polyurethane Construction



XL (0.200") Pitch

Belt No.	Pitch Length		No. Teeth
	(inch)	(mm)	
PU 60XL	6.0	152.40	30
PU 70XL	7.0	177.80	35
PU 76XL	7.6	193.04	38
PU 80XL	8.0	203.20	40
PU 86XL	8.6	218.44	43
PU 88XL	8.8	223.52	44
PU 90XL	9.0	228.60	45
PU 92XL	9.2	233.68	46
PU 94XL	9.4	238.76	47
PU 96XL	9.6	243.84	48
PU 100XL	10.0	254.00	50
PU 102XL	10.2	259.08	51
PU 106XL	10.6	269.24	53
PU 108XL	10.8	274.32	54
PU 110XL	11.0	279.40	55
PU 112XL	11.2	284.48	56
PU 114XL	11.4	289.56	57
PU 116XL	11.6	294.64	58
PU 118XL	11.8	299.72	59
PU 120XL	12.0	304.80	60
PU 124XL	12.4	320.04	62
PU 126XL	12.6	314.96	63
PU 128XL	12.8	325.12	64
PU 130XL	13.0	330.20	65
PU 134XL	13.4	340.36	67
PU 136XL	13.6	345.44	68
PU 138XL	13.8	350.52	69
PU 140XL	14.0	355.60	70
PU 148XL	14.8	375.92	74
PU 150XL	15.0	381.00	75
PU 154XL	15.4	391.16	77
PU 156XL	15.6	396.24	78
PU 160XL	16.0	406.40	80
PU 162XL	16.2	411.72	81
PU 166XL	16.6	421.64	83
PU 168XL	16.8	426.72	84
PU 170XL	17.0	431.80	85
PU 174XL	17.4	441.96	87
PU 176XL	17.6	447.04	88
PU 178XL	17.8	452.12	89
PU 180XL	18.0	457.20	90
PU 182XL	18.2	462.28	91
PU 184XL	18.4	467.36	92
PU 188XL	18.8	477.52	94
PU 190XL	19.0	482.60	95
PU 192XL	19.2	487.68	96
PU 196XL	19.6	497.84	98
PU 198XL	19.8	502.92	99
PU 200XL	20.0	508.00	100
PU 210XL	21.0	533.40	105
PU 220XL	22.0	558.80	110
PU 230XL	23.0	584.20	115
PU 232XL	23.2	589.28	116
PU 240XL	24.0	609.60	120
PU 244XL	24.4	619.76	122
PU 248XL	24.8	629.92	124
PU 250XL	25.0	635.00	125
PU 260XL	26.0	660.40	130
PU 270XL	27.0	685.80	135
PU 272XL	27.2	690.88	136

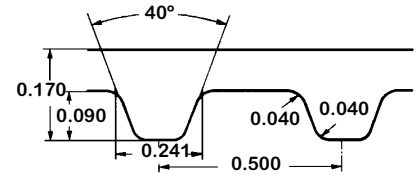
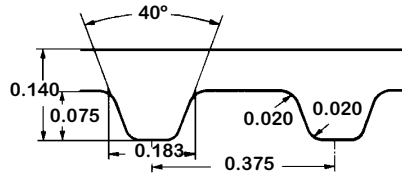
Belt No.	Pitch Length		No. Teeth
	(inch)	(mm)	
PU 274XL	27.4	695.96	137
PU 280XL	28.0	711.20	140
PU 286XL	28.6	726.44	143
PU 288XL	28.8	731.52	144
PU 290XL	29.0	736.60	145
PU 296XL	29.6	751.84	148
PU 300XL	30.0	762.00	150
PU 306XL	30.6	777.24	153
PU 310XL	31.0	787.40	155
PU 316XL	31.6	802.64	158
PU 320XL	32.0	812.80	160
PU 322XL	32.2	817.88	161
PU 330XL	33.0	838.20	165
PU 340XL	34.0	863.60	170
PU 344XL	34.4	873.76	172
PU 350XL	35.0	889.00	175
PU 360XL	36.0	914.40	180
PU 380XL	38.0	965.20	190
PU 382XL	38.2	970.28	191
PU 388XL	38.8	985.52	194
PU 390XL	39.0	990.60	195
PU 392XL	39.2	995.68	196
PU 412XL	41.2	1046.48	206
PU 414XL	41.4	1051.56	207
PU 432XL	43.2	1097.28	216
PU 438XL	43.8	1112.52	219
PU 460XL	46.0	1168.40	230
PU 498XL	49.8	1264.92	249
PU 506XL	50.6	1285.24	253
PU 514XL	51.4	1305.56	257
PU 580XL	58.0	1473.20	290
PU 630XL	63.0	1600.20	315

Note:
American Metric Corporation's
Advanced Polymer Group has
developed a new state-of-the-art
revolutionary molding process
whereby special profiles can be
produced at very minimal cost.
If you need it, We can produce it.

Standard Belt Width (inch)	25	31	37	50	75	100
----------------------------	----	----	----	----	----	-----

Ordering Example:
PU 60 XL 025
PU -----Polyurethane
60L ----- Length (inch)
XL ----- Type
025 ----- Width (inch)

American Standard (Inch Pitch) Synchronous Belts Polyurethane Construction



L (0.375") Pitch

H (0.500") Pitch

Belt No.	Pitch Length		No. Teeth
	(inch)	(mm)	
PU 124L	12.40	314.96	33
PU 150L	15.00	381.00	40
PU 169L	16.90	429.26	45
PU 173L	17.30	439.42	46
PU 187L	18.75	476.20	50
PU 202L	20.20	513.08	53
PU 210L	21.00	533.40	56
PU 225L	22.50	571.50	60
PU 236L	23.60	600.70	63
PU 240L	24.00	609.60	64
PU 244L	24.40	619.76	65
PU 255L	25.50	647.70	68
PU 258L	25.80	655.32	69
PU 270L	27.00	685.80	72
PU 285L	28.50	723.90	76
PU 300L	30.00	762.00	80
PU 322L	32.25	819.10	86
PU 345L	34.50	876.30	92
PU 367L	36.75	933.40	98
PU 390L	39.00	990.60	104
PU 405L	40.50	1028.70	108
PU 420L	42.00	1066.80	112
PU 435L	43.50	1104.90	116
PU 450L	45.00	1143.00	120
PU 454L	45.40	1152.53	121
PU 480L	48.00	1219.20	128
PU 510L	51.00	1295.40	136
PU 525L	52.50	1333.50	140
PU 540L	54.00	1371.60	144
PU 600L	60.00	1524.00	160
PU 630L	63.00	1600.20	168
PU 660L	66.00	1676.40	176
PU 817L	81.70	2075.18	217

Belt No.	Pitch Length		No. Teeth
	(inch)	(mm)	
PU 200H	20.00	508.00	40
PU 230H	23.00	584.20	46
PU 240H	24.00	609.6	48
PU 255H	25.50	647.7	51
PU 270H	27.00	685.8	54
PU 280H	28.00	711.20	56
PU 300H	30.00	762.0	60
PU 330H	33.00	838.2	66
PU 335H	33.50	850.9	67
PU 360H	36.00	914.4	72
PU 370H	37.00	939.8	74
PU 390H	39.00	990.6	78
PU 400H	40.00	1016.0	80
PU 420H	42.00	1066.8	84
PU 430H	43.00	1092.20	86
PU 450H	45.00	1143.0	90
PU 465H	46.50	1181.10	93
PU 480H	48.00	1219.2	96
PU 510H	51.00	1295.4	102
PU 540H	54.00	1371.6	108
PU 560H	56.00	1422.40	112
PU 570H	57.00	1447.8	114
PU 600H	60.00	1524.0	120
PU 630H	63.00	1600.2	126
PU 640H	64.00	1625.60	128
PU 650H	65.00	1651.00	130
PU 660H	66.00	1676.4	132
PU 680H	68.00	1727.20	136
PU 700H	70.00	1778.0	140
PU 720H	72.00	1828.80	144
PU 730H	73.00	1854.2	146
PU 750H	75.00	1905.0	150
PU 770H	77.00	1955.80	154
PU 800H	80.00	2032.0	160
PU 850H	85.00	2159.0	170
PU 860H	86.00	2184.40	172
PU 900H	90.00	2286.0	180
PU 950H	95.00	2413.00	190
PU 1000H	100.00	2540.0	200
PU 1100H	110.00	2794.0	220
PU 1250H	125.00	3175.0	250
PU 1400H	140.00	3556.0	280
PU 1700H	170.00	4318.0	340

Standard Belt Width (inch)	50	75	100	150	200	300
----------------------------	----	----	-----	-----	-----	-----

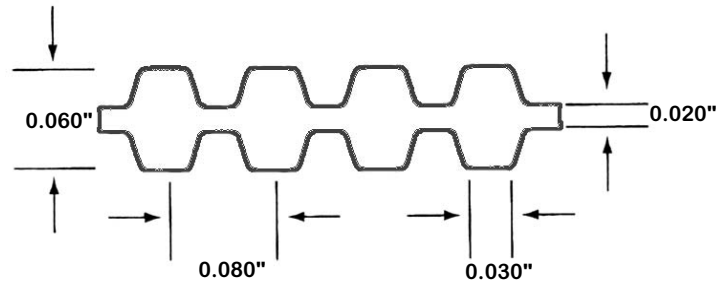
Standard Belt Width (inch)	75	100	150	200	300	400	500
----------------------------	----	-----	-----	-----	-----	-----	-----

Ordering Example:
 PU 124 L 050
 PU -----Polyurethane
 124 ----- Length (inch)
 L ----- Type
 050 ----- Width (inch)

Note:
 American Metric Corporation's
 Advanced Polymer Group has
 developed a new state-of-the-art
 revolutionary molding process
 whereby special profiles can be
 produced at very minimal cost.
 If you need it, We can produce it.

American (Inch Pitch) Double Synchronous Belts

MXL Pitch



0.080 Inch Pitch (MXL) for 1/8", 3/16", & 1/4" Wide

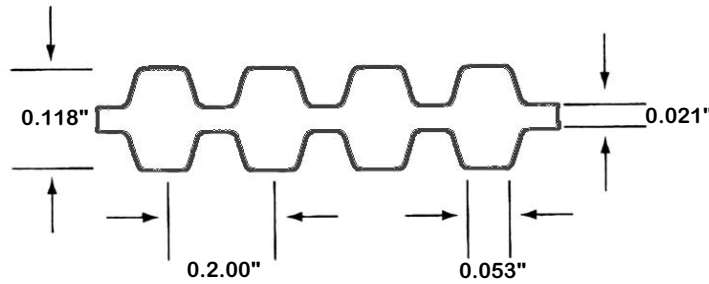
Part Number	Approx. Weight (Lbs)	Belt Length (inches)	Belt Width (inches)	Pitch (inches)	No. of Teeth
D403 MXL 012	-	40.30	1/8	2/25	504
D403 MXL 019	-	40.30	1/5	2/25	504
D403 MXL 025	-	40.30	1/4	2/25	504
D403 MXL 031	-	40.30	1/3	2/25	504
D403 MXL SLV	-	40.30	-	2/25	504
D418 MXL 012	-	41.80	1/8	2/25	523
D418 MXL 019	-	41.80	1/5	2/25	523
D418 MXL 025	-	41.80	1/4	2/25	523
D418 MXL 031	-	41.80	1/3	2/25	523
D418 MXL SLV	-	41.80	-	2/25	523
D425 MXL 012	-	42.50	1/8	2/25	531
D425 MXL 019	-	42.50	1/5	2/25	531
D425 MXL 025	-	42.50	1/4	2/25	531
D425 MXL 031	-	42.50	1/3	2/25	531
D425 MXL SLV	-	42.50	-	2/25	531
D456 MXL 012	-	45.60	1/8	2/25	570
D456 MXL 019	-	45.60	1/5	2/25	570
D456 MXL 025	-	45.60	1/4	2/25	570
D456 MXL 031	-	45.60	1/3	2/25	570
D456 MXL SLV	-	45.60	-	2/25	570
D466 MXL 012	-	46.60	1/8	2/25	583
D466 MXL 019	-	46.60	1/5	2/25	583
D466 MXL 025	-	46.60	1/4	2/25	583
D466 MXL 031	-	46.60	1/3	2/25	583
D466 MXL SLV	-	46.60	-	2/25	583
D480 MXL 012	-	48.00	1/8	2/25	600
D480 MXL 019	-	48.00	1/5	2/25	600
D480 MXL 025	-	48.00	1/4	2/25	600
D480 MXL 031	-	48.00	1/3	2/25	600
D480 MXL SLV	-	48.00	-	2/25	600
D518 MXL 012	-	51.80	1/8	2/25	648
D518 MXL 019	-	51.80	1/5	2/25	648
D518 MXL 025	-	51.80	1/4	2/25	648
D518 MXL 031	-	51.80	1/3	2/25	648
D518 MXL SLV	-	51.80	-	2/25	648
D600 MXL 012	-	60.00	1/8	2/25	750
D600 MXL 019	-	60.00	1/5	2/25	750
D600 MXL 025	-	60.00	1/4	2/25	750
D600 MXL 031	-	60.00	1/3	2/25	750
D600 MXL SLV	-	60.00	-	2/25	750
D608 MXL 012	-	60.80	1/8	2/25	760
D608 MXL 019	-	60.80	1/5	2/25	760
D608 MXL 025	-	60.80	1/4	2/25	760
D608 MXL 031	-	60.80	1/3	2/25	760
D608 MXL SLV	-	60.80	-	2/25	760
D624 MXL 012	-	62.40	1/8	2/25	780
D624 MXL 019	-	62.40	1/5	2/25	780
D624 MXL 025	-	62.40	1/4	2/25	780
D624 MXL 031	-	62.40	1/3	2/25	780
D624 MXL SLV	-	62.40	-	2/25	780
D810 MXL 012	-	81.00	1/8	2/25	1013
D810 MXL 019	-	81.00	1/5	2/25	1013
D810 MXL 025	-	81.00	1/4	2/25	1013
D810 MXL 031	-	81.00	1/3	2/25	1013
D810 MXL SLV	-	81.00	-	2/25	1013
D848 MXL 012	-	84.80	1/8	2/25	1060
D848 MXL 019	-	84.80	1/5	2/25	1060

D848 MXL 025

Part Number	Approx. Weight (Lbs)	Belt Length (inches)	Belt Width (inches)	Pitch (inches)	No. of Teeth
D848 MXL 031	-	84.80	1/4	2/25	1060
D848 MXL SLV	-	84.80	1/3	2/25	1060
D910 MXL 012	-	84.80	-	2/25	1060
D910 MXL 019	-	91.00	1/8	2/25	1138
D910 MXL 025	-	91.00	1/5	2/25	1138
D910 MXL 031	-	91.00	1/4	2/25	1138
D910 MXL SLV	-	91.00	1/3	2/25	1138
D1000 MXL 012	-	91.00	-	2/25	1138
D1000 MXL 019	-	100.00	1/8	2/25	1250
D1000 MXL 025	-	100.00	1/5	2/25	1250
D1000 MXL 031	-	100.00	1/4	2/25	1250
D1000 MXL SLV	-	100.00	1/3	2/25	1250
D1024 MXL 012	-	100.00	-	2/25	1250
D1024 MXL 019	-	102.40	1/8	2/25	1280
D1024 MXL 025	-	102.40	1/5	2/25	1280
D1024 MXL 031	-	102.40	1/4	2/25	1280
D1024 MXL SLV	-	102.40	1/3	2/25	1280
D1170 MXL 012	-	102.40	-	2/25	1280
D1170 MXL 019	-	117.00	1/8	2/25	1463
D1170 MXL 025	-	117.00	1/5	2/25	1463
D1170 MXL 031	-	117.00	1/4	2/25	1463
D1170 MXL SLV	-	117.00	1/3	2/25	1463

Note:
 American Metric Corporation's Advanced Polymer Group has developed a new state-of-the-art revolutionary molding process whereby special profiles can be produced at very minimal cost. If you need it, We can produce it.

American (Inch Pitch) Double Synchronous Belts XL Pitch

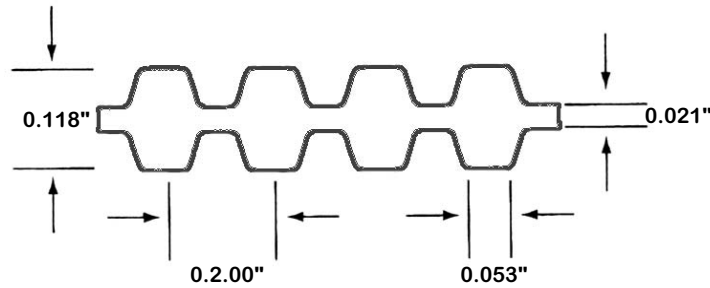


1/5 Inch Pitch (XL) for 1/4" & 3/8" Wide Belts

Part Number	Approx. Weight (Lbs)	Belt Length (inches)	Belt Width (inches)	Pitch (inches)	No. of Teeth
D140 XL 025	.020	14.00	1/4	1/5	70
D140 XL 031	-	14.00	1/3	1/5	70
D140 XL 037	.030	14.00	3/8	1/5	70
D140 XL SLV	-	14.00	-	1/5	70
D150 XL 025	.020	15.00	1/4	1/5	75
D150 XL 031	-	15.00	1/3	1/5	75
D150 XL 037	.030	15.00	3/8	1/5	75
D150 XL SLV	-	15.00	-	1/5	75
D156 XL 025	-	15.60	1/4	1/5	78
D156 XL 031	-	15.60	1/3	1/5	78
D156 XL 037	-	15.60	3/8	1/5	78
D156 XL SLV	-	15.60	-	1/5	78
D160 XL 025	.020	16.00	1/4	1/5	80
D160 XL 031	-	16.00	1/3	1/5	80
D160 XL 037	.030	16.00	3/8	1/5	80
D160 XL SLV	-	16.00	-	1/5	80
D170 XL 025	.020	17.00	1/4	1/5	85
D170 XL 031	-	17.00	1/3	1/5	85
D170 XL 037	.030	17.00	3/8	1/5	85
D170 XL SLV	-	17.00	-	1/5	85
D180 XL 025	.030	18.00	1/4	1/5	90
D180 XL 031	-	18.00	1/3	1/5	90
D180 XL 037	.040	18.00	3/8	1/5	90
D180 XL SLV	-	18.00	-	1/5	90
D190 XL 025	.030	19.00	1/4	1/5	95
D190 XL 031	-	19.00	1/3	1/5	95
D190 XL 037	.040	19.00	3/8	1/5	95
D190 XL SLV	-	19.00	-	1/5	95
D200 XL 025	.030	20.00	1/4	1/5	100
D200 XL 031	-	20.00	1/3	1/5	100
D200 XL 037	.040	20.00	3/8	1/5	100
D200 XL SLV	-	20.00	-	1/5	100
D206 XL 025	.030	20.60	1/4	1/5	103
D206 XL 031	-	20.60	1/3	1/5	103
D206 XL 037	.040	20.60	3/8	1/5	103
D206 XL SLV	-	20.60	-	1/5	103
D210 XL 025	.030	21.00	1/4	1/5	105
D210 XL 031	-	21.00	1/3	1/5	105
D210 XL 037	.040	21.00	3/8	1/5	105
D210 XL SLV	-	21.00	-	1/5	105
D214 XL 025	-	21.40	1/4	1/5	107
D214 XL 031	-	21.40	1/3	1/5	107
D214 XL 037	-	21.40	3/8	1/5	107
D214 XL SLV	-	21.40	-	1/5	107
D220 XL 025	.030	22.00	1/4	1/5	110
D220 XL 031	-	22.00	1/3	1/5	110
D220 XL 037	.040	22.00	3/8	1/5	110
D220 XL SLV	-	22.00	-	1/5	110
D228 XL 025	.030	22.80	1/4	1/5	114
D228 XL 031	-	22.80	1/3	1/5	114
D228 XL 037	.050	22.80	3/8	1/5	114
D228 XL SLV	-	22.80	-	1/5	114
D230 XL 025	.030	23.00	1/4	1/5	115
D230 XL 031	-	23.00	1/3	1/5	115
D230 XL 037	.050	23.00	3/8	1/5	115
D230 XL SLV	-	23.00	-	1/5	115
D236 XL 025	-	23.60	1/4	1/5	118

Part Number	Approx. Weight (Lbs)	Belt Length (inches)	Belt Width (inches)	Pitch (inches)	No. of Teeth
D236 XL 031	-	23.60	1/3	1/5	118
D236 XL 037	-	23.60	3/8	1/5	118
D236 XL SLV	-	23.60	-	1/5	118
D240 XL 025	.030	24.00	1/4	1/5	120
D240 XL 031	-	24.00	1/3	1/5	120
D240 XL 037	.050	24.00	3/8	1/5	120
D240 XL SLV	-	24.00	-	1/5	120
D248 XL 025	-	24.80	1/4	1/5	124
D248 XL 031	-	24.80	1/3	1/5	124
D248 XL 037	-	24.80	3/8	1/5	124
D248 XL SLV	-	24.80	-	1/5	124
D250 XL 025	.030	25.00	1/4	1/5	125
D250 XL 031	-	25.00	1/3	1/5	125
D250 XL 037	.050	25.00	3/8	1/5	125
D250 XL SLV	-	25.00	-	1/5	125
D260 XL 025	.030	26.00	1/4	1/5	130
D260 XL 031	-	26.00	1/3	1/5	130
D260 XL 037	.050	26.00	3/8	1/5	130
D260 XL SLV	-	26.00	-	1/5	130
D270 XL 025	.030	27.00	1/4	1/5	135
D270 XL 031	-	27.00	1/3	1/5	135
D270 XL 037	.050	27.00	3/8	1/5	135
D270 XL SLV	-	27.00	-	1/5	135
D276 XL 025	-	27.60	1/4	1/5	138
D276 XL 031	-	27.60	1/3	1/5	138
D276 XL 037	-	27.60	3/8	1/5	138
D276 XL SLV	-	27.60	-	1/5	138
D280 XL 025	.030	28.00	1/4	1/5	140
D280 XL 031	-	28.00	1/3	1/5	140
D280 XL 037	.050	28.00	3/8	1/5	140
D280 XL SLV	-	28.00	-	1/5	140
D290 XL 025	.030	29.00	1/4	1/5	145
D290 XL 031	-	29.00	1/3	1/5	145
D290 XL 037	.050	29.00	3/8	1/5	145
D290 XL SLV	-	29.00	-	1/5	145
D300 XL 025	.040	30.00	1/4	1/5	150
D300 XL 031	-	30.00	1/3	1/5	150
D300 XL 037	.060	30.00	3/8	1/5	150
D300 XL SLV	-	30.00	-	1/5	150
D304 XL 025	-	30.40	1/4	1/5	152
D304 XL 031	-	30.40	1/3	1/5	152
D304 XL 037	-	30.40	3/8	1/5	152
D304 XL SLV	-	30.40	-	1/5	152
D310 XL 025	.040	31.00	1/4	1/5	155
D310 XL 031	-	31.00	1/3	1/5	155
D310 XL 037	.060	31.00	3/8	1/5	155
D310 XL SLV	-	31.00	-	1/5	155
D316 XL 025	-	31.60	1/4	1/5	158
D316 XL 031	-	31.60	1/3	1/5	158
D316 XL 037	-	31.60	3/8	1/5	158
D316 XL SLV	-	31.60	-	1/5	158
D320 XL 025	.040	32.00	1/4	1/5	160
D320 XL 031	-	32.00	1/3	1/5	160
D320 XL 037	.060	32.00	3/8	1/5	160
D320 XL SLV	-	32.00	-	1/5	160
D326 XL 025	-	32.60	1/4	1/5	163
D326 XL 031	-	32.60	1/3	1/5	163

American (Inch Pitch) Double Synchronous Belts XL Pitch



1/5 Inch Pitch (XL) for 1/4" & 3/8" Wide Belts

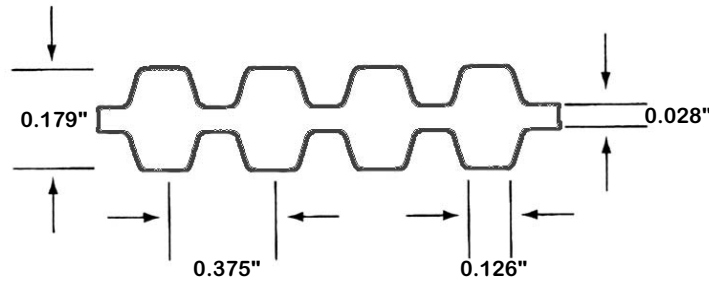
Part Number	Approx. Weight (Lbs)	Belt Length (inches)	Belt Width (inches)	Pitch (inches)	No. of Teeth
D326 XL 037	-	32.60	3/8	1/5	163
D326 XL SLV	-	32.60	-	1/5	163
D330 XL 025	.040	33.00	1/4	1/5	165
D330 XL 031	-	33.00	1/3	1/5	165
D330 XL 037	.060	33.00	3/8	1/5	165
D330 XL SLV	-	33.00	-	1/5	165
D340 XL 025	.040	34.00	1/4	1/5	170
D340 XL 031	-	34.00	1/3	1/5	170
D340 XL 037	.060	34.00	3/8	1/5	170
D340 XL SLV	-	34.00	-	1/5	170
D348 XL 025	.040	34.80	1/4	1/5	174
D348 XL 031	-	34.80	1/3	1/5	174
D348 XL 037	.060	34.80	3/8	1/5	174
D348 XL SLV	-	34.80	-	1/5	174
D352 XL 025	.050	35.20	1/4	1/5	176
D352 XL 031	-	35.20	1/3	1/5	176
D352 XL 037	.070	35.20	3/8	1/5	176
D352 XL SLV	-	35.20	-	1/5	176
D360 XL 025	.050	36.00	1/4	1/5	180
D360 XL 031	-	36.00	1/3	1/5	180
D360 XL 037	.070	36.00	3/8	1/5	180
D360 XL SLV	-	36.00	-	1/5	180
D364 XL 025	.050	36.40	1/4	1/5	182
D364 XL 031	-	36.40	1/3	1/5	182
D364 XL 037	.070	36.40	3/8	1/5	182
D364 XL SLV	-	36.40	-	1/5	182
D372 XL 025	-	37.20	1/4	1/5	186
D372 XL 031	-	37.20	1/3	1/5	186
D372 XL 037	-	37.20	3/8	1/5	186
D372 XL SLV	-	37.20	-	1/5	186
D376 XL 025	.050	37.60	1/4	1/5	188
D376 XL 031	-	37.60	1/3	1/5	188
D376 XL 037	.070	37.60	3/8	1/5	188
D376 XL SLV	-	37.60	-	1/5	188
D380 XL 025	-	38.00	1/4	1/5	190
D380 XL 031	-	38.00	1/3	1/5	190
D380 XL 037	-	38.00	3/8	1/5	190
D380 XL SLV	-	38.00	-	1/5	190
D384 XL 025	.050	38.40	1/4	1/5	192
D384 XL 031	-	38.40	1/3	1/5	192
D384 XL 037	.070	38.40	3/8	1/5	192
D384 XL SLV	-	38.40	-	1/5	192
D400 XL 025	.060	40.00	1/4	1/5	200
D400 XL 031	-	40.00	1/3	1/5	200
D400 XL 037	.080	40.00	3/8	1/5	200
D400 XL SLV	-	40.00	-	1/5	200
D424 XL 025	.060	42.40	1/4	1/5	212
D424 XL 031	-	42.40	1/3	1/5	212
D424 XL 037	.090	42.40	3/8	1/5	212
D424 XL SLV	-	42.40	-	1/5	212
D432 XL 025	-	43.20	1/4	1/5	216
D432 XL 031	-	43.20	1/3	1/5	216
D432 XL 037	-	43.20	3/8	1/5	216
D432 XL SLV	-	43.20	-	1/5	216
D450 XL 025	.060	45.00	1/4	1/5	225
D450 XL 031	-	45.00	1/3	1/5	225
D450 XL 037	.090	45.00	3/8	1/5	225

Part Number	Approx. Weight (Lbs)	Belt Length (inches)	Belt Width (inches)	Pitch (inches)	No. of Teeth
D450 XL SLV	-	45.00	-	1/5	225
D460 XL 025	.060	46.00	1/4	1/5	230
D460 XL 031	-	46.00	1/3	1/5	230
D460 XL 037	.090	46.00	3/8	1/5	230
D460 XL SLV	-	46.00	-	1/5	230
D490 XL 025	.060	49.00	1/4	1/5	245
D490 XL 031	-	49.00	1/3	1/5	245
D490 XL 037	.090	49.00	3/8	1/5	245
D490 XL SLV	-	49.00	-	1/5	245
D496 XL 025	-	49.60	1/4	1/5	248
D496 XL 031	-	49.60	1/3	1/5	248
D496 XL 037	-	49.60	3/8	1/5	248
D496 XL SLV	-	49.60	-	1/5	248
D564 XL 025	-	56.40	1/4	1/5	282
D564 XL 031	-	56.40	1/3	1/5	282
D564 XL 037	-	56.40	3/8	1/5	282
D564 XL SLV	-	56.40	-	1/5	282
D612 XL 025	-	61.20	1/4	1/5	306
D612 XL 031	-	61.20	1/3	1/5	306
D612 XL 037	-	61.20	3/8	1/5	306
D612 XL SLV	-	61.20	-	1/5	306
D630 XL 025	.070	63.00	1/4	1/5	315
D630 XL 031	-	63.00	1/3	1/5	315
D630 XL 037	.100	63.00	3/8	1/5	315
D630 XL SLV	-	63.00	-	1/5	315
D670 XL 025	-	67.00	1/4	1/5	335
D670 XL 031	-	67.00	1/3	1/5	335
D670 XL 037	-	67.00	3/8	1/5	335
D670 XL SLV	-	67.00	-	1/5	335
D720 XL 025	-	72.00	1/4	1/5	360
D720 XL 031	-	72.00	1/3	1/5	360
D720 XL 037	-	72.00	3/8	1/5	360
D720 XL SLV	-	72.00	-	1/5	360
D1300 XL 025	-	130.00	1/4	1/5	650
D1300 XL 031	-	130.00	1/3	1/5	650
D1300 XL 037	-	130.00	3/8	1/5	650
D1300 XL SLV	-	130.00	-	1/5	650

Note:
American Metric Corporation's Advanced Polymer Group has developed a new state-of-the-art revolutionary molding process whereby special profiles can be produced at very minimal cost. If you need it, We can produce it.

American (Inch Pitch) Double Synchronous Belts

L Pitch



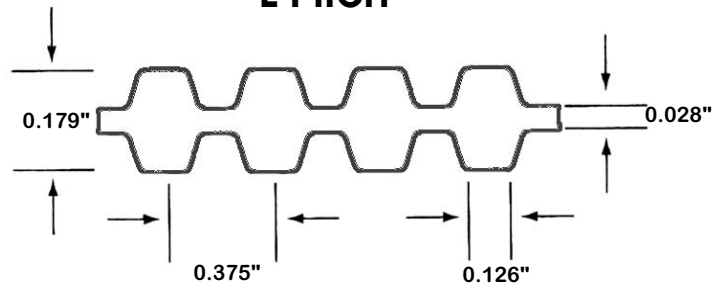
3/8 Inch Pitch (L) for 1/2", 3/4" & 1.0" Wide Belts

Part Number	Approx. Weight (Lbs)	Belt Length (inches)	Belt Width (inches)	Pitch (inches)	No. of Teeth
D150 L 050	.06	15.00	1/2	3/8	40
D150 L 075	.08	15.00	3/4	3/8	40
D150 L 100	.11	15.00	1	3/8	40
D150 L SLV	-	15.00	-	3/8	40
D173 L 050	-	17.30	1/2	3/8	46
D173 L 075	-	17.30	3/4	3/8	46
D173 L 100	-	17.30	1	3/8	46
D173 L SLV	-	17.30	-	3/8	46
D187 L 050	.07	18.70	1/2	3/8	50
D187 L 075	.10	18.70	3/4	3/8	50
D187 L 100	.14	18.70	1	3/8	50
D187 L SLV	-	18.70	-	3/8	50
D202 L 050	-	20.20	1/2	3/8	54
D202 L 075	-	20.20	3/4	3/8	54
D202 L 100	-	20.20	1	3/8	54
D202 L SLV	-	20.20	-	3/8	54
D203 L 050	.07	20.30	1/2	3/8	54
D203 L 075	.09	20.30	3/4	3/8	54
D203 L 100	.13	20.30	1	3/8	54
D203 L SLV	-	20.30	-	3/8	54
D210 L 050	.070	21.00	1/2	3/8	56
D210 L 075	.100	21.00	3/4	3/8	56
D210 L 100	.130	21.00	1	3/8	56
D210 L SLV	-	21.00	-	3/8	56
D217 L 050	-	21.70	1/2	3/8	58
D217 L 075	-	21.70	3/4	3/8	58
D217 L 100	-	21.70	1	3/8	58
D217 L SLV	-	21.70	-	3/8	58
D225 L 050	.070	22.50	1/2	3/8	60
D225 L 075	.100	22.50	3/4	3/8	60
D225 L 100	.140	22.50	1	3/8	60
D225 L SLV	-	22.50	-	3/8	60
D233 L 050	-	23.30	1/2	3/8	62
D233 L 075	-	23.30	3/4	3/8	62
D233 L 100	-	23.30	1	3/8	62
D233 L SLV	-	23.30	-	3/8	62
D240 L 050	.080	24.00	1/2	3/8	64
D240 L 075	.120	24.00	3/4	3/8	64
D240 L 100	.160	24.00	1	3/8	64
D240 L SLV	-	24.00	-	3/8	64
D244 L 050	-	24.40	1/2	3/8	65
D244 L 075	-	24.40	3/4	3/8	65
D244 L 100	-	24.40	1	3/8	65
D244 L SLV	-	24.40	-	3/8	65
D255 L 050	.080	25.50	1/2	3/8	68
D255 L 075	.120	25.50	3/4	3/8	68
D255 L 100	.170	25.50	1	3/8	68
D255 L SLV	-	25.50	-	3/8	68
D263 L 050	.080	26.30	1/2	3/8	70
D263 L 075	.120	26.30	3/4	3/8	70
D263 L 100	.170	26.30	1	3/8	70
D263 L SLV	-	26.30	-	3/8	70
D270 L 050	.090	27.00	1/2	3/8	72
D270 L 075	.130	27.00	3/4	3/8	72
D270 L 100	.170	27.00	1	3/8	72
D270 L SLV	-	27.00	-	3/8	72
D275 L 050	-	27.50	1/2	3/8	73

Part Number	Approx. Weight (Lbs)	Belt Length (inches)	Belt Width (inches)	Pitch (inches)	No. of Teeth
D275 L 075	-	27.50	3/4	3/8	73
D275 L 100	-	27.50	1	3/8	73
D275 L SLV	-	27.50	-	3/8	73
D277 L 050	.090	27.70	1/2	3/8	74
D277 L 075	.130	27.70	3/4	3/8	74
D277 L 100	.170	27.70	1	3/8	74
D277 L SLV	-	27.70	-	3/8	74
D280 L 050	-	28.00	1/2	3/8	75
D280 L 075	-	28.00	3/4	3/8	75
D280 L 100	-	28.00	1	3/8	75
D280 L SLV	-	28.00	-	3/8	75
D285 L 050	.090	28.50	1/2	3/8	76
D285 L 075	.130	28.50	3/4	3/8	76
D285 L 100	.180	28.50	1	3/8	76
D285 L SLV	-	28.50	-	3/8	76
D300 L 050	.100	30.00	1/2	3/8	80
D300 L 075	.140	30.00	3/4	3/8	80
D300 L 100	.200	30.00	1	3/8	80
D300 L SLV	-	30.00	-	3/8	80
D304 L 050	.100	30.40	1/2	3/8	81
D304 L 075	.140	30.40	3/4	3/8	81
D304 L 100	.200	30.40	1	3/8	81
D304 L SLV	-	30.40	-	3/8	81
D315 L 050	.100	31.50	1/2	3/8	84
D315 L 075	.150	31.50	3/4	3/8	84
D315 L 100	.200	31.50	1	3/8	84
D315 L SLV	-	31.50	-	3/8	84
D322 L 050	.100	32.20	1/2	3/8	86
D322 L 075	.160	32.20	3/4	3/8	86
D322 L 100	.210	32.20	1	3/8	86
D322 L SLV	-	32.20	-	3/8	86
D330 L 050	-	33.00	1/2	3/8	88
D330 L 075	-	33.00	3/4	3/8	88
D330 L 100	-	33.00	1	3/8	88
D330 L SLV	-	33.00	-	3/8	88
D337 L 050	.110	33.70	1/2	3/8	90
D337 L 075	.170	33.70	3/4	3/8	90
D337 L 100	.210	33.70	1	3/8	90
D337 L SLV	-	33.70	-	3/8	90
D345 L 050	.110	34.50	1/2	3/8	92
D345 L 075	.170	34.50	3/4	3/8	92
D345 L 100	.220	34.50	1	3/8	92
D345 L SLV	-	34.50	-	3/8	92
D352 L 050	-	35.20	1/2	3/8	94
D352 L 075	-	35.20	3/4	3/8	94
D352 L 100	-	35.20	1	3/8	94
D352 L SLV	-	35.20	-	3/8	94
D356 L 050	-	35.60	1/2	3/8	95
D356 L 075	-	35.60	3/4	3/8	95
D356 L 100	-	35.60	1	3/8	95
D356 L SLV	-	35.60	-	3/8	95
D360 L 050	.120	36.00	1/2	3/8	96
D360 L 075	.170	36.00	3/4	3/8	96
D360 L 100	.220	36.00	1	3/8	96
D360 L SLV	-	36.00	-	3/8	96
D367 L 050	.120	36.70	1/2	3/8	98
D367 L 075	.170	36.70	3/4	3/8	98

American (Inch Pitch) Double Synchronous Belts

L Pitch

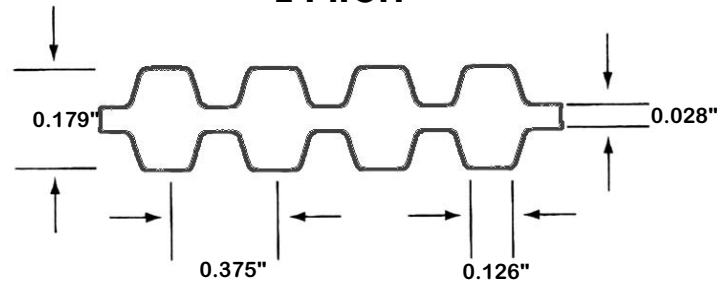


3/8 Inch Pitch (L) for 1/2", 3/4" & 1.0" Wide Belts

Part Number	Approx. Weight (Lbs)	Belt Length (inches)	Belt Width (inches)	Pitch (inches)	No. of Teeth
D367 L 100	.230	36.70	1	3/8	98
D367 L SLV	-	36.70	-	3/8	98
D375 L 050	.120	37.50	1/2	3/8	100
D375 L 075	.180	37.50	3/4	3/8	100
D375 L 100	.240	37.50	1	3/8	100
D375 L SLV	-	37.50	-	3/8	100
D382 L 050	.120	38.20	1/2	3/8	102
D382 L 075	.180	38.20	3/4	3/8	102
D382 L 100	.240	38.20	1	3/8	102
D382 L SLV	-	38.20	-	3/8	102
D390 L 050	.130	39.00	1/2	3/8	104
D390 L 075	.180	39.00	3/4	3/8	104
D390 L 100	.250	39.00	1	3/8	104
D390 L SLV	-	39.00	-	3/8	104
D394 L 050	-	39.40	1/2	3/8	105
D394 L 075	-	39.40	3/4	3/8	105
D394 L 100	-	39.40	1	3/8	105
D394 L SLV	-	39.40	-	3/8	105
D397 L 050	-	39.70	1/2	3/8	106
D397 L 075	-	39.70	3/4	3/8	106
D397 L 100	-	39.70	1	3/8	106
D397 L SLV	-	39.70	-	3/8	106
D405 L 050	-	40.50	1/2	3/8	108
D405 L 075	-	40.50	3/4	3/8	108
D405 L 100	-	40.50	1	3/8	108
D405 L SLV	-	40.50	-	3/8	108
D408 L 050	-	40.80	1/2	3/8	109
D408 L 075	-	40.80	3/4	3/8	109
D408 L 100	-	40.80	1	3/8	109
D408 L SLV	-	40.80	-	3/8	109
D412 L 050	-	41.20	1/2	3/8	110
D412 L 075	-	41.20	3/4	3/8	110
D412 L 100	-	41.20	1	3/8	110
D412 L SLV	-	41.20	-	3/8	110
D420 L 050	.140	42.00	1/2	3/8	112
D420 L 075	.200	42.00	3/4	3/8	112
D420 L 100	.270	42.00	1	3/8	112
D420 L SLV	-	42.00	-	3/8	112
D427 L 050	.140	42.70	1/2	3/8	114
D427 L 075	.200	42.70	3/4	3/8	114
D427 L 100	.270	42.70	1	3/8	114
D427 L SLV	-	42.70	-	3/8	114
D435 L 050	-	43.50	1/2	3/8	116
D435 L 075	-	43.50	3/4	3/8	116
D435 L 100	-	43.50	1	3/8	116
D435 L SLV	-	43.50	-	3/8	116
D442 L 050	-	44.20	1/2	3/8	118
D442 L 075	-	44.20	3/4	3/8	118
D442 L 100	-	44.20	1	3/8	118
D442 L SLV	-	44.20	-	3/8	118
D450 L 050	.150	45.00	1/2	3/8	120
D450 L 075	.200	45.00	3/4	3/8	120
D450 L 100	.290	45.00	1	3/8	120
D450 L SLV	-	45.00	-	3/8	120
D480 L 050	.160	48.00	1/2	3/8	128
D480 L 075	.220	48.00	3/4	3/8	128
D480 L 100	.310	48.00	1	3/8	128

Part Number	Approx. Weight (Lbs)	Belt Length (inches)	Belt Width (inches)	Pitch (inches)	No. of Teeth
D480 L SLV	-	48.00	-	3/8	128
D495 L 050	-	49.50	1/2	3/8	132
D495 L 075	-	49.50	3/4	3/8	132
D495 L 100	-	49.50	1	3/8	132
D495 L SLV	-	49.50	-	3/8	132
D510 L 050	.170	51.00	1/2	3/8	136
D510 L 075	.260	51.00	3/4	3/8	136
D510 L 100	.320	51.00	1	3/8	136
D510 L SLV	-	51.00	-	3/8	136
D525 L 050	.170	52.50	1/2	3/8	140
D525 L 075	.260	52.50	3/4	3/8	140
D525 L 100	.340	52.50	1	3/8	140
D525 L SLV	-	52.50	-	3/8	140
D540 L 050	.180	52.50	1/2	3/8	140
D540 L 075	.280	52.50	3/4	3/8	140
D540 L 100	.340	52.50	1	3/8	140
D540 L SLV	-	52.50	-	3/8	140
D548 L 050	.180	54.80	1/2	3/8	146
D548 L 075	.280	54.80	3/4	3/8	146
D548 L 100	.340	54.80	1	3/8	146
D548 L SLV	-	54.80	-	3/8	146
D555 L 050	-	55.50	1/2	3/8	148
D555 L 075	-	55.50	3/4	3/8	148
D555 L 100	-	55.50	1	3/8	148
D555 L SLV	-	55.50	-	3/8	148
D570 L 050	-	57.00	1/2	3/8	152
D570 L 075	-	57.00	3/4	3/8	152
D570 L 100	-	57.00	1	3/8	152
D570 L SLV	-	57.00	-	3/8	152
D574 L 050	-	57.40	1/2	3/8	153
D574 L 075	-	57.40	3/4	3/8	153
D574 L 100	-	57.40	1	3/8	153
D574 L SLV	-	57.40	-	3/8	153
D585 L 050	-	58.50	1/2	3/8	156
D585 L 075	-	58.50	3/4	3/8	156
D585 L 100	-	58.50	1	3/8	156
D585 L SLV	-	58.50	-	3/8	156
D600 L 050	.200	60.00	1/2	3/8	160
D600 L 075	.300	60.00	3/4	3/8	160
D600 L 100	.360	60.00	1	3/8	160
D600 L SLV	-	60.00	-	3/8	160
D630 L 050	-	63.00	1/2	3/8	168
D630 L 075	-	63.00	3/4	3/8	168
D630 L 100	-	63.00	1	3/8	168
D630 L SLV	-	63.00	-	3/8	168
D660 L 050	.220	66.00	1/2	3/8	176
D660 L 075	.330	66.00	3/4	3/8	176
D660 L 100	.420	66.00	1	3/8	176
D660 L SLV	-	66.00	-	3/8	176
D694 L 050	-	69.40	1/2	3/8	185
D694 L 075	-	69.40	3/4	3/8	185
D694 L 100	-	69.40	1	3/8	185
D694 L SLV	-	69.40	-	3/8	185
D720 L 050	-	72.00	1/2	3/8	192
D720 L 075	-	72.00	3/4	3/8	192
D720 L 100	-	72.00	1	3/8	192
D720 L SLV	-	72.00	-	3/8	192

American (Inch Pitch) Double Synchronous Belts L Pitch



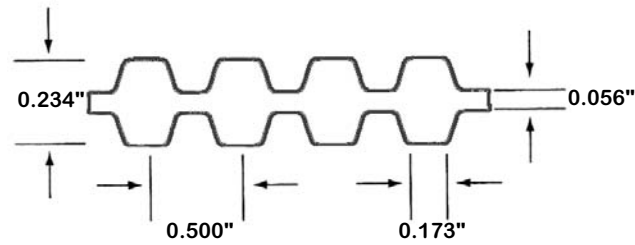
3/8 Inch Pitch (L) for 1/2", 3/4" & 1.0" Wide Belts

Part Number	Approx. Weight (Lbs)	Belt Length (inches)	Belt Width (inches)	Pitch (inches)	No. of Teeth
D728 L 050	.240	72.80	1/2	3/8	194
D728 L 075	.340	72.80	3/4	3/8	194
D728 L 100	.450	72.80	1	3/8	194
D728 L SLV	-	72.80	-	3/8	194
D731 L 050	.240	73.10	1/2	3/8	195
D731 L 075	.340	73.10	3/4	3/8	195
D731 L 100	.450	73.10	1	3/8	195
D731 L SLV	-	73.10	-	3/8	195
D765 L 050	-	76.50	1/2	3/8	204
D765 L 075	-	76.50	3/4	3/8	204
D765 L 100	-	76.50	1	3/8	204
D765 L SLV	-	76.50	-	3/8	204
D817 L 050	-	81.70	1/2	3/8	218
D817 L 075	-	81.70	3/4	3/8	218
D817 L 100	-	81.70	1	3/8	218
D817 L SLV	-	81.70	-	3/8	218
D863 L 050	.280	86.30	1/2	3/8	230
D863 L 075	.400	86.30	3/4	3/8	230
D863 L 100	.550	86.30	1	3/8	230
D863 L SLV	-	86.30	-	3/8	230
D881 L 050	.280	88.10	1/2	3/8	235
D881 L 075	.400	88.10	3/4	3/8	235
D881 L 100	.560	88.10	1	3/8	235
D881 L SLV	-	88.10	-	3/8	235
D1028 L 050	-	102.80	1/2	3/8	274
D1028 L 075	-	102.80	3/4	3/8	274
D1028 L 100	-	102.80	1	3/8	274
D1028 L SLV	-	102.80	-	3/8	274
D1148 L 050	-	114.80	1/2	3/8	306
D1148 L 075	-	114.80	3/4	3/8	306
D1148 L 100	-	114.80	1	3/8	306
D1148 L SLV	-	114.80	-	3/8	306
D1192 L 050	-	119.20	1/2	3/8	318
D1192 L 075	-	119.20	3/4	3/8	318
D1192 L 100	-	119.20	1	3/8	318
D1192 L SLV	-	119.20	-	3/8	318
D1418 L 050	-	141.80	1/2	3/8	378
D1418 L 075	-	141.80	3/4	3/8	378
D1418 L 100	-	141.80	1	3/8	378
D1418 L SLV	-	141.80	-	3/8	378

Note:
American Metric Corporation's Advanced Polymer Group has developed a new state-of-the-art revolutionary molding process whereby special profiles can be produced at very minimal cost. If you need it, We can produce it.

American (Inch Pitch) Double Synchronous Belts

H Pitch

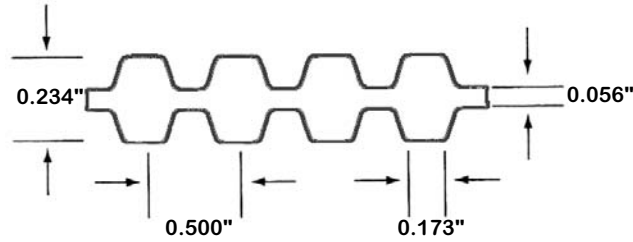


1/2 Inch Pitch (H) for 1.0", 1 1/2", 2.0" & 3.0" Wide Belts

Part Number	Approx. Weight (Lbs)	Belt Length (inches)	Belt Width (inches)	Pitch (inches)	No. of Teeth	Part Number	Approx. Weight (Lbs)	Belt Length (inches)	Belt Width (inches)	Pitch (inches)	No. of Teeth
D200 H 075	-	20.00	3/4	1/2	40	D285 H 200	-	28.50	2	1/2	57
D200 H 100	-	20.00	1	1/2	40	D285 H 300	-	28.50	3	1/2	57
D200 H 150	-	20.00	1 1/2	1/2	40	D285 H SLV	-	28.50	-	1/2	57
D200 H 200	-	20.00	2	1/2	40	D290 H 075	-	29.00	3/4	1/2	58
D200 H 300	-	20.00	3	1/2	40	D290 H 100	-	29.00	1	1/2	58
D200 H SLV	-	20.00	-	1/2	40	D290 H 150	-	29.00	1 1/2	1/2	58
D210 H 075	-	21.00	3/4	1/2	42	D290 H 200	-	29.00	2	1/2	58
D210 H 100	-	21.00	1	1/2	42	D290 H 300	-	29.00	3	1/2	58
D210 H 150	-	21.00	1 1/2	1/2	42	D290 H SLV	-	29.00	-	1/2	58
D210 H 200	-	21.00	2	1/2	42	D300 H 075	.23	30.00	3/4	1/2	60
D210 H 300	-	21.00	3	1/2	42	D300 H 100	.300	30.00	1	1/2	60
D210 H SLV	-	21.00	-	1/2	42	D300 H 150	.450	30.00	1 1/2	1/2	60
D220 H 075	-	22.00	3/4	1/2	44	D300 H 200	.600	30.00	2	1/2	60
D220 H 100	-	22.00	1	1/2	44	D300 H 300	.910	30.00	3	1/2	60
D220 H 150	-	22.00	1 1/2	1/2	44	D300 H SLV	-	30.00	-	1/2	60
D220 H 200	-	22.00	2	1/2	44	D310 H 075	-	31.00	3/4	1/2	62
D220 H 300	-	22.00	3	1/2	44	D310 H 100	.310	31.00	1	1/2	62
D220 H SLV	-	22.00	-	1/2	44	D310 H 150	.470	31.00	1 1/2	1/2	62
D230 H 075	-	23.00	3/4	1/2	46	D310 H 200	.620	31.00	2	1/2	62
D230 H 100	.240	23.00	1	1/2	46	D310 H 300	.930	31.00	3	1/2	62
D230 H 150	.360	23.00	1 1/2	1/2	46	D310 H SLV	-	31.00	-	1/2	62
D230 H 200	.480	23.00	2	1/2	46	D320 H 075	-	32.00	3/4	1/2	64
D230 H 300	.720	23.00	3	1/2	46	D320 H 100	.320	32.00	1	1/2	64
D230 H SLV	-	23.00	-	1/2	46	D320 H 150	.480	32.00	1 1/2	1/2	64
D240 H 075	.180	24.00	3/4	1/2	48	D320 H 200	.640	32.00	2	1/2	64
D240 H 100	.250	24.00	1	1/2	48	D320 H 300	.960	32.00	3	1/2	64
D240 H 150	.380	24.00	1 1/2	1/2	48	D320 H SLV	-	32.00	-	1/2	64
D240 H 200	.490	24.00	2	1/2	48	D330 H 075	.25	33.00	3/4	1/2	66
D240 H 300	.750	24.00	3	1/2	48	D330 H 100	.330	33.00	1	1/2	66
D240 H SLV	-	24.00	-	1/2	48	D330 H 150	.490	33.00	1 1/2	1/2	66
D250 H 075	-	25.00	3/4	1/2	50	D330 H 200	.660	33.00	2	1/2	66
D250 H 100	-	25.00	1	1/2	50	D330 H 300	.990	33.00	3	1/2	66
D250 H 150	-	25.00	1 1/2	1/2	50	D330 H SLV	-	33.00	-	1/2	66
D250 H 200	-	25.00	2	1/2	50	D335 H 075	-	33.50	3/4	1/2	67
D250 H 300	-	25.00	3	1/2	50	D335 H 100	-	33.50	1	1/2	67
D250 H SLV	-	25.00	-	1/2	50	D335 H 150	-	33.50	1 1/2	1/2	67
D260 H 075	-	26.00	3/4	1/2	52	D335 H 200	-	33.50	2	1/2	67
D260 H 100	-	26.00	1	1/2	52	D335 H 300	-	33.50	3	1/2	67
D260 H 150	-	26.00	1 1/2	1/2	52	D335 H SLV	-	33.50	-	1/2	67
D260 H 200	-	26.00	2	1/2	52	D340 H 075	-	34.00	3/4	1/2	68
D260 H 300	-	26.00	3	1/2	52	D340 H 100	.340	34.00	1	1/2	68
D260 H SLV	-	26.00	-	1/2	52	D340 H 150	.510	34.00	1 1/2	1/2	68
D270 H 075	.20	27.00	3/4	1/2	54	D340 H 200	.680	34.00	2	1/2	68
D270 H 100	.270	27.00	1	1/2	54	D340 H 300	1.020	34.00	3	1/2	68
D270 H 150	.410	27.00	1 1/2	1/2	54	D340 H SLV	-	34.00	-	1/2	68
D270 H 200	.540	27.00	2	1/2	54	D345 H 075	-	34.50	3/4	1/2	69
D270 H 300	.820	27.00	3	1/2	54	D345 H 100	-	34.50	1	1/2	69
D270 H SLV	-	27.00	-	1/2	54	D345 H 150	-	34.50	1 1/2	1/2	69
D280 H 075	-	28.00	3/4	1/2	56	D345 H 200	-	34.50	2	1/2	69
D280 H 100	.280	28.00	1	1/2	56	D345 H 300	-	34.50	3	1/2	69
D280 H 150	.420	28.00	1 1/2	1/2	56	D345 H SLV	-	34.50	-	1/2	69
D280 H 200	.560	28.00	2	1/2	56	D350 H 075	-	35.00	3/4	1/2	70
D280 H 300	.840	28.00	3	1/2	56	D350 H 100	.350	35.00	1	1/2	70
D280 H SLV	-	28.00	-	1/2	56	D350 H 150	.520	35.00	1 1/2	1/2	70
D285 H 075	-	28.50	3/4	1/2	57	D350 H 200	.700	35.00	2	1/2	70
D285 H 100	-	28.50	1	1/2	57	D350 H 300	1.040	35.00	3	1/2	70
D285 H 150	-	28.50	1 1/2	1/2	57	D350 H SLV	-	35.00	-	1/2	70

American (Inch Pitch) Double Synchronous Belts

H Pitch

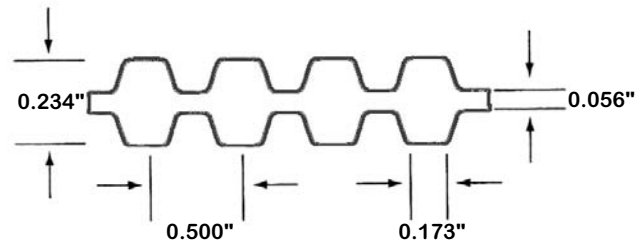


1/2 Inch Pitch (H) for 1.0", 1 1/2", 2.0" & 3.0" Wide Belts

Part Number	Approx. Weight (Lbs)	Belt Length (inches)	Belt Width (inches)	Pitch (inches)	No. of Teeth	Part Number	Approx. Weight (Lbs)	Belt Length (inches)	Belt Width (inches)	Pitch (inches)	No. of Teeth
D360 H 075	.27	36.00	3/4	1/2	72	D450 H 200	.910	45.00	2	1/2	90
D360 H 100	.360	36.00	1	1/2	72	D450 H 300	1.370	45.00	3	1/2	90
D360 H 150	.540	36.00	1 1/2	1/2	72	D450 H SLV	-	45.00	-	1/2	90
D360 H 200	.730	36.00	2	1/2	72	D460 H 075	-	46.00	3/4	1/2	92
D360 H 300	1.090	36.00	3	1/2	72	D460 H 100	-	46.00	1	1/2	92
D360 H SLV	-	36.00	-	1/2	72	D460 H 150	-	46.00	1 1/2	1/2	92
D370 H 075	-	37.00	3/4	1/2	74	D460 H 200	-	46.00	2	1/2	92
D370 H 100	.370	37.00	1	1/2	74	D460 H 300	-	46.00	3	1/2	92
D370 H 150	.550	37.00	1 1/2	1/2	74	D460 H SLV	-	46.00	-	1/2	92
D370 H 200	.740	37.00	2	1/2	74	D470 H 075	-	47.00	3/4	1/2	94
D370 H 300	1.100	37.00	3	1/2	74	D470 H 100	-	47.00	1	1/2	94
D370 H SLV	-	37.00	-	1/2	74	D470 H 150	-	47.00	1 1/2	1/2	94
D380 H 075	-	38.00	3/4	1/2	76	D470 H 200	-	47.00	2	1/2	94
D380 H 100	-	38.00	1	1/2	76	D470 H 300	-	47.00	3	1/2	94
D380 H 150	-	38.00	1 1/2	1/2	76	D470 H SLV	-	47.00	-	1/2	94
D380 H 200	-	38.00	2	1/2	76	D480 H 075	.350	48.00	3/4	1/2	96
D380 H 300	-	38.00	3	1/2	76	D480 H 100	.480	48.00	1	1/2	96
D380 H SLV	-	38.00	-	1/2	76	D480 H 150	.730	48.00	1 1/2	1/2	96
D390 H 075	.290	39.00	3/4	1/2	78	D480 H 200	.980	48.00	2	1/2	96
D390 H 100	.390	39.00	1	1/2	78	D480 H 300	1.460	48.00	3	1/2	96
D390 H 150	.580	39.00	1 1/2	1/2	78	D480 H SLV	-	48.00	-	1/2	96
D390 H 200	.780	39.00	2	1/2	78	D490 H 075	-	49.00	3/4	1/2	98
D390 H 300	1.170	39.00	3	1/2	78	D490 H 100	.490	49.00	1	1/2	98
D390 H SLV	-	39.00	-	1/2	78	D490 H 150	.740	49.00	1 1/2	1/2	98
D400 H 075	-	40.00	3/4	1/2	80	D490 H 200	.980	49.00	2	1/2	98
D400 H 100	.400	40.00	1	1/2	80	D490 H 300	1.480	49.00	3	1/2	98
D400 H 150	.600	40.00	1 1/2	1/2	80	D490 H SLV	-	49.00	-	1/2	98
D400 H 200	.800	40.00	2	1/2	80	D500 H 075	-	50.00	3/4	1/2	100
D400 H 300	1.200	40.00	3	1/2	80	D500 H 100	-	50.00	1	1/2	100
D400 H SLV	-	40.00	-	1/2	80	D500 H 150	-	50.00	1 1/2	1/2	100
D410 H 075	-	41.00	3/4	1/2	82	D500 H 200	-	50.00	2	1/2	100
D410 H 100	.410	41.00	1	1/2	82	D500 H 300	-	50.00	3	1/2	100
D410 H 150	.610	41.00	1 1/2	1/2	82	D500 H SLV	-	50.00	-	1/2	100
D410 H 200	.820	41.00	2	1/2	82	D510 H 075	.380	51.00	3/4	1/2	102
D410 H 300	1.220	41.00	3	1/2	82	D510 H 100	.510	51.00	1	1/2	102
D410 H SLV	-	41.00	-	1/2	82	D510 H 150	.770	51.00	1 1/2	1/2	102
D420 H 075	.320	42.00	3/4	1/2	84	D510 H 200	1.030	51.00	2	1/2	102
D420 H 100	.420	42.00	1	1/2	84	D510 H 300	1.550	51.00	3	1/2	102
D420 H 150	.630	42.00	1 1/2	1/2	84	D510 H SLV	-	51.00	-	1/2	102
D420 H 200	.850	42.00	2	1/2	84	D520 H 075	-	52.00	3/4	1/2	104
D420 H 300	1.270	42.00	3	1/2	84	D520 H 100	-	52.00	1	1/2	104
D420 H SLV	-	42.00	-	1/2	84	D520 H 150	-	52.00	1 1/2	1/2	104
D430 H 075	-	43.00	3/4	1/2	86	D520 H 200	-	52.00	2	1/2	104
D430 H 100	.430	43.00	1	1/2	86	D520 H 300	-	52.00	3	1/2	104
D430 H 150	.650	43.00	1 1/2	1/2	86	D520 H SLV	-	52.00	-	1/2	104
D430 H 200	.860	43.00	2	1/2	86	D530 H 075	-	53.00	3/4	1/2	106
D430 H 300	1.300	43.00	3	1/2	86	D530 H 100	.530	53.00	1	1/2	106
D430 H SLV	-	43.00	-	1/2	86	D530 H 150	.800	53.00	1 1/2	1/2	106
D445 H 075	-	44.50	3/4	1/2	89	D530 H 200	1.060	53.00	2	1/2	106
D445 H 100	-	44.50	1	1/2	89	D530 H 300	1.800	53.00	3	1/2	106
D445 H 150	-	44.50	1 1/2	1/2	89	D530 H SLV	-	53.00	-	1/2	106
D445 H 200	-	44.50	2	1/2	89	D540 H 075	.400	54.00	3/4	1/2	108
D445 H 300	-	44.50	3	1/2	89	D540 H 100	.530	54.00	1	1/2	108
D445 H SLV	-	44.50	-	1/2	89	D540 H 150	.820	54.00	1 1/2	1/2	108
D450 H 075	.330	45.00	3/4	1/2	90	D540 H 200	1.090	54.00	2	1/2	108
D450 H 100	.460	45.00	1	1/2	90	D540 H 300	1.640	54.00	3	1/2	108
D450 H 150	.680	45.00	1 1/2	1/2	90	D540 H SLV	-	54.00	-	1/2	108

American (Inch Pitch) Double Synchronous Belts

H Pitch

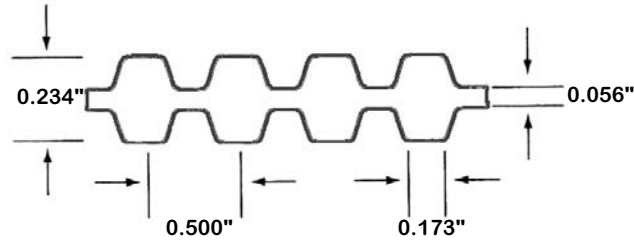


1/2 Inch Pitch (H) for 1.0", 1 1/2", 2.0" & 3.0" Wide Belts

Part Number	Approx. Weight (Lbs)	Belt Length (inches)	Belt Width (inches)	Pitch (inches)	No. of Teeth	Part Number	Approx. Weight (Lbs)	Belt Length (inches)	Belt Width (inches)	Pitch (inches)	No. of Teeth
D550 H 075	-	55.00	3/4	1/2	110	D680 H 200	1.360	68.00	2	1/2	136
D550 H 100	-	55.00	1	1/2	110	D680 H 300	2.040	68.00	3	1/2	136
D550 H 150	-	55.00	1 1/2	1/2	110	D680 H SLV	-	68.00	-	1/2	136
D550 H 200	-	55.00	2	1/2	110	D700 H 075	.510	70.00	3/4	1/2	140
D550 H 300	-	55.00	3	1/2	110	D700 H 100	.700	70.00	1	1/2	140
D550 H SLV	-	55.00	-	1/2	110	D700 H 150	1.050	70.00	1 1/2	1/2	140
D560 H 075	-	56.00	3/4	1/2	112	D700 H 200	1.420	70.00	2	1/2	140
D560 H 100	.560	56.00	1	1/2	112	D700 H 300	2.130	70.00	3	1/2	140
D560 H 150	.840	56.00	1 1/2	1/2	112	D700 H SLV	-	70.00	-	1/2	140
D560 H 200	1.120	56.00	2	1/2	112	D710 H 075	-	71.00	3/4	1/2	142
D560 H 300	1.680	56.00	3	1/2	112	D710 H 100	-	71.00	1	1/2	142
D560 H SLV	-	56.00	-	1/2	112	D710 H 150	-	71.00	1 1/2	1/2	142
D570 H 075	.420	57.00	3/4	1/2	114	D710 H 200	-	71.00	2	1/2	142
D570 H 100	.570	57.00	1	1/2	114	D710 H 300	-	71.00	3	1/2	142
D570 H 150	.860	57.00	1 1/2	1/2	114	D710 H SLV	-	71.00	-	1/2	142
D570 H 200	1.160	57.00	2	1/2	114	D725 H 075	-	72.50	3/4	1/2	145
D570 H 300	1.730	57.00	3	1/2	114	D725 H 100	-	72.50	1	1/2	145
D570 H SLV	-	57.00	-	1/2	114	D725 H 150	-	72.50	1 1/2	1/2	145
D580 H 075	-	58.00	3/4	1/2	116	D725 H 200	-	72.50	2	1/2	145
D580 H 100	.580	58.00	1	1/2	116	D725 H 300	-	72.50	3	1/2	145
D580 H 150	.870	58.00	1 1/2	1/2	116	D725 H SLV	-	72.50	-	1/2	145
D580 H 200	1.160	58.00	2	1/2	116	D730 H 075	-	73.00	3/4	1/2	146
D580 H 300	1.740	58.00	3	1/2	116	D730 H 100	-	73.00	1	1/2	146
D580 H SLV	-	58.00	-	1/2	116	D730 H 150	-	73.00	1 1/2	1/2	146
D600 H 075	.440	60.00	3/4	1/2	120	D730 H 200	-	73.00	2	1/2	146
D600 H 100	.600	60.00	1	1/2	120	D730 H 300	-	73.00	3	1/2	146
D600 H 150	.910	60.00	1 1/2	1/2	120	D730 H SLV	-	73.00	-	1/2	146
D600 H 200	1.210	60.00	2	1/2	120	D750 H 075	-	75.00	3/4	1/2	150
D600 H 300	1.820	60.00	3	1/2	120	D750 H 100	.750	75.00	1	1/2	150
D600 H SLV	-	60.00	-	1/2	120	D750 H 150	1.130	75.00	1 1/2	1/2	150
D630 H 075	.470	63.00	3/4	1/2	126	D750 H 200	1.510	75.00	2	1/2	150
D630 H 100	.620	63.00	1	1/2	126	D750 H 300	2.280	75.00	3	1/2	150
D630 H 150	.950	63.00	1 1/2	1/2	126	D750 H SLV	-	75.00	-	1/2	150
D630 H 200	1.270	63.00	2	1/2	126	D770 H 075	-	77.00	3/4	1/2	154
D630 H 300	1.910	63.00	3	1/2	126	D770 H 100	.770	77.00	1	1/2	154
D630 H SLV	-	63.00	-	1/2	126	D770 H 150	1.160	77.00	1 1/2	1/2	154
D640 H 075	-	64.00	3/4	1/2	128	D770 H 200	1.540	77.00	2	1/2	154
D640 H 100	-	64.00	1	1/2	128	D770 H 300	2.320	77.00	3	1/2	154
D640 H 150	-	64.00	1 1/2	1/2	128	D770 H SLV	-	77.00	-	1/2	154
D640 H 200	-	64.00	2	1/2	128	D800 H 075	.580	80.00	3/4	1/2	160
D640 H 300	-	64.00	3	1/2	128	D800 H 100	.790	80.00	1	1/2	160
D640 H SLV	-	64.00	-	1/2	128	D800 H 150	1.210	80.00	1 1/2	1/2	160
D650 H 075	-	65.00	3/4	1/2	130	D800 H 200	1.610	80.00	2	1/2	160
D650 H 100	.650	65.00	1	1/2	130	D800 H 300	2.430	80.00	3	1/2	160
D650 H 150	.980	65.00	1 1/2	1/2	130	D800 H SLV	-	80.00	-	1/2	160
D650 H 200	1.300	65.00	2	1/2	130	D810 H 075	-	81.00	3/4	1/2	162
D650 H 300	1.960	65.00	3	1/2	130	D810 H 100	.810	81.00	1	1/2	162
D650 H SLV	-	65.00	-	1/2	130	D810 H 150	1.220	81.00	1 1/2	1/2	162
D660 H 075	.490	66.00	3/4	1/2	132	D810 H 200	1.620	81.00	2	1/2	162
D660 H 100	.660	66.00	1	1/2	132	D810 H 300	2.440	81.00	3	1/2	162
D660 H 150	1.000	66.00	1 1/2	1/2	132	D810 H SLV	-	81.00	-	1/2	162
D660 H 200	1.330	66.00	2	1/2	132	D840 H 075	-	84.00	3/4	1/2	168
D660 H 300	2.000	66.00	3	1/2	132	D840 H 100	.840	84.00	1	1/2	168
D660 H SLV	-	66.00	-	1/2	132	D840 H 150	1.260	84.00	1 1/2	1/2	168
D680 H 075	-	68.00	3/4	1/2	136	D840 H 200	1.680	84.00	2	1/2	168
D680 H 100	.680	68.00	1	1/2	136	D840 H 300	2.520	84.00	3	1/2	168
D680 H 150	1.020	68.00	1 1/2	1/2	136	D840 H SLV	-	84.00	-	1/2	168

American (Inch Pitch) Double Synchronous Belts

H Pitch

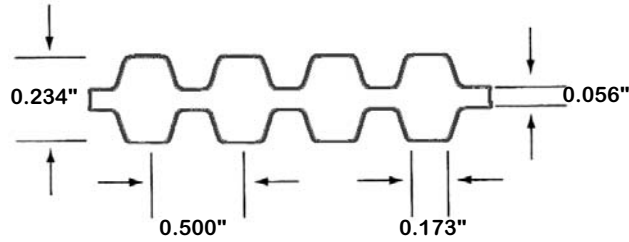


1/2 Inch Pitch (H) for 1.0", 1 1/2", 2.0" & 3.0" Wide Belts

Part Number	Approx. Weight (Lbs)	Belt Length (inches)	Belt Width (inches)	Pitch (inches)	No. of Teeth
D850 H 075	.630	85.00	3/4	1/2	170
D850 H 100	.850	85.00	1	1/2	170
D850 H 150	1.290	85.00	1 1/2	1/2	170
D850 H 200	1.720	85.00	2	1/2	170
D850 H 300	2.590	85.00	3	1/2	170
D850 H SLV	-	85.00	-	1/2	170
D860 H 075	-	85.00	3/4	1/2	170
D860 H 100	.860	85.00	1	1/2	170
D860 H 150	1.290	85.00	1 1/2	1/2	170
D860 H 200	1.720	85.00	2	1/2	170
D860 H 300	2.580	85.00	3	1/2	170
D860 H SLV	-	85.00	-	1/2	170
D880 H 075	-	88.00	3/4	1/2	176
D880 H 100	.880	88.00	1	1/2	176
D880 H 150	1.320	88.00	1 1/2	1/2	176
D880 H 200	1.760	88.00	2	1/2	176
D880 H 300	2.640	88.00	3	1/2	176
D880 H SLV	-	88.00	-	1/2	176
D900 H 075	.660	90.00	3/4	1/2	180
D900 H 100	.900	90.00	1	1/2	180
D900 H 150	1.350	90.00	1 1/2	1/2	180
D900 H 200	1.820	90.00	2	1/2	180
D900 H 300	2.730	90.00	3	1/2	180
D900 H SLV	-	90.00	-	1/2	180
D950 H 075	-	95.00	3/4	1/2	190
D950 H 100	.950	95.00	1	1/2	190
D950 H 150	1.430	95.00	1 1/2	1/2	190
D950 H 200	1.900	95.00	2	1/2	190
D950 H 300	2.860	95.00	3	1/2	190
D950 H SLV	-	95.00	-	1/2	190
D960 H 075	-	96.00	3/4	1/2	192
D960 H 100	-	96.00	1	1/2	192
D960 H 150	-	96.00	1 1/2	1/2	192
D960 H 200	-	96.00	2	1/2	192
D960 H 300	-	96.00	3	1/2	192
D960 H SLV	-	96.00	-	1/2	192
D980 H 075	-	98.00	3/4	1/2	196
D980 H 100	-	98.00	1	1/2	196
D980 H 150	-	98.00	1 1/2	1/2	196
D980 H 200	-	98.00	2	1/2	196
D980 H 300	-	98.00	3	1/2	196
D980 H SLV	-	98.00	-	1/2	196
D1000 H 075	.730	100.00	3/4	1/2	200
D1000 H 100	1.000	100.00	1	1/2	200
D1000 H 150	1.510	100.00	1 1/2	1/2	200
D1000 H 200	2.020	100.00	2	1/2	200
D1000 H 300	3.060	100.00	3	1/2	200
D1000 H SLV	-	100.00	-	1/2	200
D1020 H 075	-	102.00	3/4	1/2	204
D1020 H 100	1.000	102.00	1	1/2	204
D1020 H 150	1.500	102.00	1 1/2	1/2	204
D1020 H 200	2.000	102.00	2	1/2	204
D1020 H 300	3.000	102.00	3	1/2	204
D1020 H SLV	-	102.00	-	1/2	204
D1050 H 075	-	105.00	3/4	1/2	210
D1050 H 100	1.050	105.00	1	1/2	210
D1050 H 150	1.580	105.00	1 1/2	1/2	210

Part Number	Approx. Weight (Lbs)	Belt Length (inches)	Belt Width (inches)	Pitch (inches)	No. of Teeth
D1050 H 200	2.100	105.00	2	1/2	210
D1050 H 300	3.160	105.00	3	1/2	210
D1050 H SLV	-	105.00	-	1/2	210
D1085 H 075	-	108.50	3/4	1/2	217
D1085 H 100	-	108.50	1	1/2	217
D1085 H 150	-	108.50	1 1/2	1/2	217
D1085 H 200	-	108.50	2	1/2	217
D1085 H 300	-	108.50	3	1/2	217
D1085 H SLV	-	108.50	-	1/2	217
D1100 H 075	.820	110.00	3/4	1/2	220
D1100 H 100	1.090	110.00	1	1/2	220
D1100 H 150	1.650	110.00	1 1/2	1/2	220
D1100 H 200	2.180	110.00	2	1/2	220
D1100 H 300	3.340	110.00	3	1/2	220
D1100 H SLV	-	110.00	-	1/2	220
D1120 H 075	-	112.00	3/4	1/2	224
D1120 H 100	-	112.00	1	1/2	224
D1120 H 150	-	112.00	1 1/2	1/2	224
D1120 H 200	-	112.00	2	1/2	224
D1120 H 300	-	112.00	3	1/2	224
D1120 H SLV	-	112.00	-	1/2	224
D1130 H 075	-	113.00	3/4	1/2	226
D1130 H 100	-	113.00	1	1/2	226
D1130 H 150	-	113.00	1 1/2	1/2	226
D1130 H 200	-	113.00	2	1/2	226
D1130 H 300	-	113.00	3	1/2	226
D1130 H SLV	-	113.00	-	1/2	226
D1140 H 075	-	114.00	3/4	1/2	228
D1140 H 100	1.150	114.00	1	1/2	228
D1140 H 150	1.730	114.00	1 1/2	1/2	228
D1140 H 200	2.300	114.00	2	1/2	228
D1140 H 300	3.460	114.00	3	1/2	228
D1140 H SLV	-	114.00	-	1/2	228
D1150 H 075	-	115.00	3/4	1/2	230
D1150 H 100	-	115.00	1	1/2	230
D1150 H 150	-	115.00	1 1/2	1/2	230
D1150 H 200	-	115.00	2	1/2	230
D1150 H 300	-	115.00	3	1/2	230
D1150 H SLV	-	115.00	-	1/2	230
D1250 H 075	.930	125.00	3/4	1/2	250
D1250 H 100	1.250	125.00	1	1/2	250
D1250 H 150	1.890	125.00	1 1/2	1/2	250
D1250 H 200	2.500	125.00	2	1/2	250
D1250 H 300	3.800	125.00	3	1/2	250
D1250 H SLV	-	125.00	-	1/2	250
D1270 H 075	-	127.00	3/4	1/2	254
D1270 H 100	-	127.00	1	1/2	254
D1270 H 150	-	127.00	1 1/2	1/2	254
D1270 H 200	-	127.00	2	1/2	254
D1270 H 300	-	127.00	3	1/2	254
D1270 H SLV	-	127.00	-	1/2	254
D1325 H 075	-	132.50	3/4	1/2	265
D1325 H 100	-	132.50	1	1/2	265
D1325 H 150	-	132.50	1 1/2	1/2	265
D1325 H 200	-	132.50	2	1/2	265
D1325 H 300	-	132.50	3	1/2	265
D1325 H SLV	-	132.50	-	1/2	265

American (Inch Pitch) Double Synchronous Belts H / XH Pitch



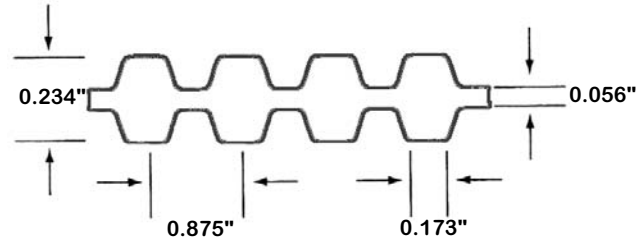
1/2 Inch Pitch (H) for 1.0", 1 1/2", 2.0" & 3.0" Wide Belts

Part Number	Approx. Weight (Lbs)	Belt Length (inches)	Belt Width (inches)	Pitch (inches)	No. of Teeth
D1350 H 075	-	135.00	3/4	1/2	270
D1350 H 100	1.350	135.00	1	1/2	270
D1350 H 150	2.030	135.00	1 1/2	1/2	270
D1350 H 200	2.700	135.00	2	1/2	270
D1350 H 300	4.060	135.00	3	1/2	270
D1350 H SLV	-	135.00	-	1/2	270
D1400 H 075	1.020	140.00	3/4	1/2	280
D1400 H 100	1.400	140.00	1	1/2	280
D1400 H 150	2.110	140.00	1 1/2	1/2	280
D1400 H 200	2.800	140.00	2	1/2	280
D1400 H 300	4.250	140.00	3	1/2	280
D1400 H SLV	-	140.00	-	1/2	280
D1450 H 075	-	145.00	3/4	1/2	290
D1450 H 100	-	145.00	1	1/2	290
D1450 H 150	-	145.00	1 1/2	1/2	290
D1450 H 200	-	145.00	2	1/2	290
D1450 H 300	-	145.00	3	1/2	290
D1450 H SLV	-	145.00	-	1/2	290
D1560 H 075	-	156.00	3/4	1/2	312
D1560 H 100	-	156.00	1	1/2	312
D1560 H 150	-	156.00	1 1/2	1/2	312
D1560 H 200	-	156.00	2	1/2	312
D1560 H 300	-	156.00	3	1/2	312
D1560 H SLV	-	156.00	-	1/2	312
D1700 H 075	1.260	170.00	3/4	1/2	340
D1700 H 100	1.700	170.00	1	1/2	340
D1700 H 150	2.550	170.00	1 1/2	1/2	340
D1700 H 200	3.400	170.00	2	1/2	340
D1700 H 300	5.100	170.00	3	1/2	340
D1700 H SLV	-	170.00	-	1/2	340

Part Number	Approx. Weight (Lbs)	Belt Length (inches)	Belt Width (inches)	Pitch (inches)	No. of Teeth
D507 XH 200	-	50.70	2	7/8	58
D507 XH 300	-	50.70	3	7/8	58
D507 XH 400	-	50.70	4	7/8	58
D507 XH 500	-	50.70	5	7/8	58
D507 XH 600	-	50.70	6	7/8	58
D507 XH 700	-	50.70	7	7/8	58
D507 XH SLV	-	50.70	-	7/8	58
D560 XH 200	-	56.00	2	7/8	64
D560 XH 300	-	56.00	3	7/8	64
D560 XH 400	-	56.00	4	7/8	64
D560 XH 500	-	56.00	5	7/8	64
D560 XH 600	-	56.00	6	7/8	64
D560 XH 700	-	56.00	7	7/8	64
D560 XH SLV	-	56.00	-	7/8	64
D570 XH 200	-	57.00	2	7/8	65
D570 XH 300	-	57.00	3	7/8	65
D570 XH 400	-	57.00	4	7/8	65
D570 XH 500	-	57.00	5	7/8	65
D570 XH 600	-	57.00	6	7/8	65
D570 XH 700	-	57.00	7	7/8	65
D570 XH SLV	-	57.00	-	7/8	65
D580 XH 200	-	58.00	2	7/8	66
D580 XH 300	-	58.00	3	7/8	66
D580 XH 400	-	58.00	4	7/8	66
D580 XH 500	-	58.00	5	7/8	66
D580 XH 600	-	58.00	6	7/8	66
D580 XH 700	-	58.00	7	7/8	66
D580 XH SLV	-	58.00	-	7/8	66
D610 XH 200	-	61.00	2	7/8	70
D610 XH 300	-	61.00	3	7/8	70
D610 XH 400	-	61.00	4	7/8	70
D610 XH 500	-	61.00	5	7/8	70
D610 XH 600	-	61.00	6	7/8	70
D610 XH 700	-	61.00	7	7/8	70
D610 XH SLV	-	61.00	-	7/8	70
D630 XH 200	-	63.00	2	7/8	72
D630 XH 300	-	63.00	3	7/8	72
D630 XH 400	-	63.00	4	7/8	72
D630 XH 500	-	63.00	5	7/8	72
D630 XH 600	-	63.00	6	7/8	72
D630 XH 700	-	63.00	7	7/8	72
D630 XH SLV	-	63.00	-	7/8	72
D700 XH 200	-	70.00	2	7/8	80
D700 XH 300	-	70.00	3	7/8	80
D700 XH 400	-	70.00	4	7/8	80
D700 XH 500	-	70.00	5	7/8	80
D700 XH 600	-	70.00	6	7/8	80
D700 XH 700	-	70.00	7	7/8	80
D700 XH SLV	-	70.00	-	7/8	80
D752 XH 200	-	75.20	2	7/8	86
D752 XH 300	-	75.20	3	7/8	86
D752 XH 400	-	75.20	4	7/8	86
D752 XH 500	-	75.20	5	7/8	86
D752 XH 600	-	75.20	6	7/8	86
D752 XH 700	-	75.20	7	7/8	86
D752 XH SLV	-	75.20	-	7/8	86
D770 XH 200	-	77.00	2	7/8	88

Note:
American Metric Corporation's Advanced Polymer Group has developed a new state-of-the-art revolutionary molding process whereby special profiles can be produced at very minimal cost. If you need it, We can produce it.

American (Inch Pitch) Double Synchronous Belts XH Pitch



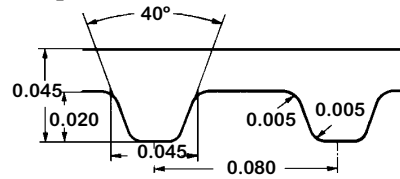
7/8 Inch Pitch (XH) for 3", 4", 5", 6" & 7" Wide Belts

Part Number	Approx. Weight (Lbs)	Belt Length (inches)	Belt Width (inches)	Pitch (inches)	No. of Teeth
D770 XH 300	-	77.00	3	7/8	88
D770 XH 400	-	77.00	4	7/8	88
D770 XH 500	-	77.00	5	7/8	88
D770 XH 600	-	77.00	6	7/8	88
D770 XH 700	-	77.00	7	7/8	88
D770 XH SLV	-	77.00	-	7/8	88
D800 XH 200	-	80.00	2	7/8	91
D800 XH 300	-	80.00	3	7/8	91
D800 XH 400	-	80.00	4	7/8	91
D800 XH 500	-	80.00	5	7/8	91
D800 XH 600	-	80.00	6	7/8	91
D800 XH 700	-	80.00	7	7/8	91
D800 XH SLV	-	80.00	-	7/8	91
D840 XH 200	-	84.00	2	7/8	96
D840 XH 300	-	84.00	3	7/8	96
D840 XH 400	-	84.00	4	7/8	96
D840 XH 500	-	84.00	5	7/8	96
D840 XH 600	-	84.00	6	7/8	96
D840 XH 700	-	84.00	7	7/8	96
D840 XH SLV	-	84.00	-	7/8	96
D980 XH 200	-	98.00	2	7/8	112
D980 XH 300	-	98.00	3	7/8	112
D980 XH 400	-	98.00	4	7/8	112
D980 XH 500	-	98.00	5	7/8	112
D980 XH 600	-	98.00	6	7/8	112
D980 XH 700	-	98.00	7	7/8	112
D980 XH SLV	-	98.00	-	7/8	112
D1000 XH 200	-	100.00	2	7/8	114
D1000 XH 300	-	100.00	3	7/8	114
D1000 XH 400	-	100.00	4	7/8	114
D1000 XH 500	-	100.00	5	7/8	114
D1000 XH 600	-	100.00	6	7/8	114
D1000 XH 700	-	100.00	7	7/8	114
D1000 XH SLV	-	100.00	-	7/8	114
D1120 XH 200	-	112.00	2	7/8	128
D1120 XH 300	-	112.00	3	7/8	128
D1120 XH 400	-	112.00	4	7/8	128
D1120 XH 500	-	112.00	5	7/8	128
D1120 XH 600	-	112.00	6	7/8	128
D1120 XH 700	-	112.00	7	7/8	128
D1120 XH SLV	-	112.00	-	7/8	128
D1260 XH 200	-	126.00	2	7/8	144
D1260 XH 300	-	126.00	3	7/8	144
D1260 XH 400	-	126.00	4	7/8	144
D1260 XH 500	-	126.00	5	7/8	144
D1260 XH 600	-	126.00	6	7/8	144
D1260 XH 700	-	126.00	7	7/8	144
D1260 XH SLV	-	126.00	-	7/8	144
D1400 XH 200	-	140.00	2	7/8	160
D1400 XH 300	-	140.00	3	7/8	160
D1400 XH 400	-	140.00	4	7/8	160
D1400 XH 500	-	140.00	5	7/8	160
D1400 XH 600	-	140.00	6	7/8	160
D1400 XH 700	-	140.00	7	7/8	160
D1400 XH SLV	-	140.00	-	7/8	160
D1540 XH 200	-	154.00	2	7/8	176
D1540 XH 300	-	154.00	3	7/8	176

Part Number	Approx. Weight (Lbs)	Belt Length (inches)	Belt Width (inches)	Pitch (inches)	No. of Teeth
D1540 XH 400	-	154.00	4	7/8	176
D1540 XH 500	-	154.00	5	7/8	176
D1540 XH 600	-	154.00	6	7/8	176
D1540 XH 700	-	154.00	7	7/8	176
D1540 XH SLV	-	154.00	-	7/8	176
D1575 XH 200	-	157.50	2	7/8	180
D1575 XH 300	-	157.50	3	7/8	180
D1575 XH 400	-	157.50	4	7/8	180
D1575 XH 500	-	157.50	5	7/8	180
D1575 XH 600	-	157.50	6	7/8	180
D1575 XH 700	-	157.50	7	7/8	180
D1575 XH SLV	-	157.50	-	7/8	180

Note:
American Metric Corporation's Advanced Polymer Group has developed a new state-of-the-art revolutionary molding process whereby special profiles can be produced at very minimal cost. If you need it, We can produce it.

American (Imperial) Pitch Synchronous Belts Neoprene Construction



MXL (0.080") Pitch

Belt No.	Pitch Length		No. Teeth	Belt No.	Pitch Length		No. Teeth
	(inch)	(mm)			(inch)	(mm)	
432MXL	4.32	109.73	54	2008MXL	20.08	510.03	251
440MXL	4.40	111.76	55	2384MXL	23.84	605.54	298
448MXL	4.48	113.79	56	2776MXL	27.76	705.10	347
464MXL	4.64	117.86	58	2824MXL	28.24	717.30	353
480MXL	4.80	121.92	60	2920MXL	29.20	741.68	365
544MXL	5.44	138.18	68	2968MXL	29.68	753.87	371
560MXL	5.60	142.24	70	2976MXL	29.76	755.90	372
568MXL	5.68	144.27	71	3200MXL	32.00	812.80	400
576MXL	5.76	146.30	72	3296MXL	32.96	837.18	412
600MXL	6.00	152.40	75	3440MXL	34.40	873.76	430
616MXL	6.16	156.46	77	3472MXL	34.72	881.89	434
640MXL	6.40	162.56	80	3624MXL	36.24	920.50	453
656MXL	6.56	166.62	82	3704MXL	37.04	940.82	463
672MXL	6.72	170.69	84	3984MXL	39.84	1011.94	498
680MXL	6.80	172.72	85	4024MXL	40.24	1022.10	503
696MXL	6.96	176.78	87	4040MXL	40.40	1026.16	505
704MXL	7.04	178.82	88				
720MXL	7.20	182.88	90				
752MXL	7.52	191.01	94				
760MXL	7.60	193.04	95				
776MXL	7.76	197.10	97				
800MXL	8.00	203.20	100				
808MXL	8.08	205.23	101				
824MXL	8.24	209.30	103				
840MXL	8.40	213.36	105				
848MXL	8.48	215.39	106				
880MXL	8.80	223.52	110				
896MXL	8.96	227.58	112				
904MXL	9.04	229.62	113				
912MXL	9.12	231.65	114				
944MXL	9.44	239.78	118				
960MXL	9.60	243.84	120				
976MXL	9.76	247.90	122				
984MXL	9.84	249.94	123				
1000MXL	10.00	254.00	125				
1008MXL	10.08	256.03	126				
1040MXL	10.40	264.16	130				
1056MXL	10.56	268.22	132				
1120MXL	11.20	284.48	140				
1200MXL	12.00	304.80	150				
1240MXL	12.40	314.96	155				
1312MXL	13.12	333.25	164				
1328MXL	13.28	337.31	167				
1320MXL	13.20	335.28	165				
1360MXL	13.60	345.44	170				
1400MXL	14.00	355.60	175				
1440MXL	14.40	365.76	180				
1472MXL	14.72	373.89	184				
1800MXL	18.00	457.20	225				
1888MXL	18.88	479.55	236				

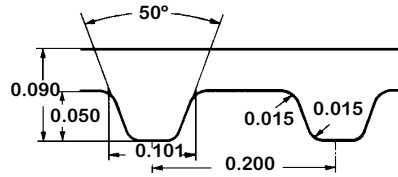
Standard Belt Width (inch)	12	19	25	31
----------------------------	----	----	----	----

Ordering Example:
 360 MXL 012
 360----- Length (inch)
 MXL----- Type
 012----- Width (inch)



American Metric® Corporation

American (Imperial) Pitch Synchronous Belts Neoprene Construction



XL (0.200") Pitch

Belt No.	Pitch Length		No. Teeth
	(inch)	(mm)	
60XL	6.0	152.40	30
70XL	7.0	177.80	35
76XL	7.6	193.04	38
80XL	8.0	203.20	40
86XL	8.6	218.44	43
88XL	8.8	223.52	44
90XL	9.0	228.60	45
92XL	9.2	233.68	46
94XL	9.4	238.76	47
96XL	9.6	243.84	48
100XL	10.0	254.00	50
102XL	10.2	259.08	51
106XL	10.6	269.24	53
108XL	10.8	274.32	54
110XL	11.0	279.40	55
112XL	11.2	284.48	56
116XL	11.6	294.64	58
118XL	11.8	299.72	59
120XL	12.0	304.80	60
124XL	12.4	320.04	62
126XL	12.6	314.96	63
128XL	12.8	325.12	64
130XL	13.0	330.20	65
134XL	13.4	340.36	67
136XL	13.6	345.44	68
138XL	13.8	350.52	69
140XL*	14.0	355.60	70
148XL	14.8	375.92	74
150XL*	15.0	381.00	75
154XL	15.4	391.16	77
156XL*	15.6	396.24	78
160XL*	16.0	406.40	80
162XL	16.2	411.72	81
166XL	16.6	421.64	83
168XL	16.8	426.72	84
170XL*	17.0	431.80	85
174XL	17.4	441.96	87
176XL	17.6	447.04	88
178XL	17.8	452.12	89
180XL*	18.0	457.20	90
182XL	18.2	462.28	91
184XL	18.4	467.36	92
188XL	18.8	477.52	94
190XL*	19.0	482.60	95
196XL	19.6	497.84	98
198XL	19.8	502.92	99
200XL*	20.0	508.00	100
210XL*	21.0	533.40	105
220XL*	22.0	558.80	110
230XL*	23.0	584.20	115

Belt No.	Pitch Length		No. Teeth
	(inch)	(mm)	
240XL*	24.0	609.60	120
244XL	24.4	619.76	122
248XL	24.8	629.92	124
250XL*	25.0	635.00	125
260XL*	26.0	660.40	130
270XL	27.0	685.80	135
272XL	27.2	690.88	136
274XL	27.4	695.96	137
280XL*	28.0	711.20	140
286XL	28.6	726.44	143
290XL	29.0	736.60	145
296XL	29.6	751.84	148
300XL*	30.0	762.00	150
306XL	30.6	777.24	153
310XL*	31.0	787.40	155
316XL	31.6	802.64	158
322XL	32.2	817.88	161
330XL	33.0	838.20	165
340XL	34.0	863.60	170
344XL	34.4	873.76	172
350XL	35.0	889.00	175
380XL	38.0	965.20	190
382XL	38.2	970.28	191
388XL	38.8	985.52	194
390XL	39.0	990.60	195
392XL	39.2	995.68	196
412XL	41.2	1046.48	206
414XL	41.4	1051.56	207
438XL	43.8	1112.52	219
460XL	46.0	1168.40	230
498XL	49.8	1264.92	249
506XL	50.6	1285.24	253
514XL	51.4	1305.56	257
580XL	58.0	1473.20	290
630XL	63.0	1600.20	315

Standard Belt Width (inch)	25	31	37	50	75	100
----------------------------	----	----	----	----	----	-----

*Double Sided Available

American Metric® Corporation

Ordering Example:

60 XL 025

60----- Length (inch)

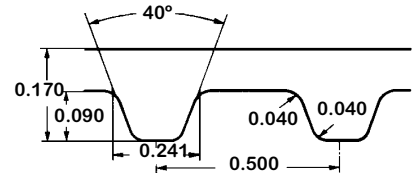
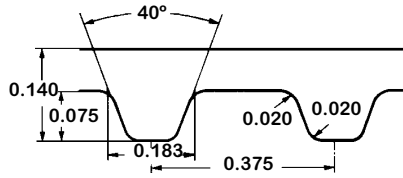
XL----- Type

025----- Width (inch)

GROUP: 091

1-091 - 060216

American (Imperial) Pitch Synchronous Belts Neoprene Construction



L (0.375") Pitch

Belt No.	Pitch Length		No. Teeth
	(inch)	(mm)	
124L	12.375	314.30	33
150L*	15.00	381.00	40
169L	16.90	429.26	45
173L*	17.30	439.42	46
187L*	18.75	476.20	50
202L*	20.20	513.08	53
210L*	21.00	533.40	56
225L*	22.50	571.50	60
236L	23.60	600.70	63
240L*	24.00	609.60	64
244L	24.40	619.76	65
255L*	25.50	647.70	68
270L*	27.00	685.80	72
285L*	28.50	723.90	76
300L*	30.00	762.00	80
322L*	32.25	819.10	86
345L*	34.50	876.30	92
367L*	36.75	933.40	98
390L*	39.00	990.60	104
405L	40.50	1028.70	108
420L*	42.00	1066.80	112
450L*	45.00	1143.00	120
454L	45.40	1152.53	121
480L*	48.00	1219.20	128
510L*	51.00	1295.40	136
540L*	54.00	1371.60	144
600L*	60.00	1524.00	160
660L*	66.00	1676.40	176
817L*	81.70	2075.18	217

H (0.500") Pitch

Belt No.	Pitch Length		No. Teeth
	(inch)	(mm)	
240H*	24.0	609.6	48
255H	25.5	647.7	51
270H*	27.0	685.8	54
300H*	30.0	762.0	60
330H*	33.0	838.2	66
335H	33.5	850.9	67
360H*	36.0	914.4	72
370H	37.0	939.8	74
390H*	39.0	990.6	78
400H	40.0	1016.0	80
420H*	42.0	1066.8	84
450H*	45.0	1143.0	90
480H*	48.0	1219.2	96
510H*	51.0	1295.4	102
540H*	54.0	1371.6	108
570H*	57.0	1447.8	114
600H*	60.0	1524.0	120
630H*	63.0	1600.2	126
660H*	66.0	1676.4	132
700H*	70.0	1778.0	140
730H	73.0	1854.2	146
750H*	75.0	1905.0	150
800H*	80.0	2032.0	160
850H*	85.0	2159.0	170
900H*	90.0	2286.0	180
1000H*	100.0	2540.0	200
1100H*	110.0	2794.0	220
1250H*	125.0	3175.0	250
1400H*	140.0	3556.0	280
1700H*	170.0	4318.0	340

Standard Belt Width (inch)	50	75	100	150	200	300
----------------------------	----	----	-----	-----	-----	-----

Standard Belt Width (inch)	75	100	150	200	300	400	500
----------------------------	----	-----	-----	-----	-----	-----	-----

Ordering Example:

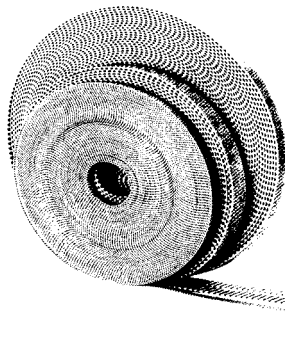
124 L 050
 124----- Length (inch)
 L----- Type
 050----- Width (inch)

*Double Sided Available

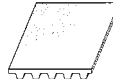
Open End and Spliced Synchronous Belting

Polyurethane with Steel or Kevlar® Cords

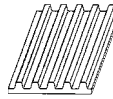
For Special Requirements



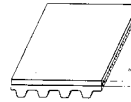
Timing Belt Clamping Plates available



PAR Type belt (Nylon facing on back of belt)



PAZ Type belt (Nylon facing on teeth of belt)



Belt with polyurethane back cover

Metric T Pitch (Open End Rolls Available in 30m, 50m, 100m)

T 5 mm						T 10 mm					
Steel Cord Belt No.	Kevlar® Cord Belt No.	Width mm	Max Traction Load		Breaking Strength N	Steel Cord Belt No.	Kevlar® Cord Belt No.	Width mm	Max Traction Load		Breaking Strength N
			Open End N	Spliced N					Open End N	Spliced N	
5 T5 OE S		5	150		475	10 T10 OE S	10 T10 OE K	10	1,050		3,350
6 T5 OE S	6 T5 OE K	6	190		570	12 T10 OE S	12 T10 OE K	12	1,280		4,020
8 T5 OE S	8 T5 OE K	8	240		730	15 T10 OE S		15	1,520		4,790
10 T5 OE S	10 T5 OE K	10	305	150	915	16 T10 OE S	16 T10 OE K	16	1,630	815	5,110
12 T5 OE S	12 T5 OE K	12	440	220	1,300	20 T10 OE S	20 T10 OE K	20	2,030	1,010	6,430
15 T5 OE S		15	570	285	1,715	25 T10 OE S	25 T10 OE K	25	2,560	1,280	8,040
16 T5 OE S	16 T5 OE K	16	610	305	1,830	30 T10 OE S	30 T10 OE K	30	3,150	1,550	9,935
20 T5 OE S	20 T5 OE K	20	780	390	2,300	32 T10 OE S	32 T10 OE K	32	3,370	1,685	10,600
25 T5 OE S	25 T5 OE K	25	985	490	2,975	40 T10 OE S	40 T10 OE K	40	4,150	2,075	13,160
32 T5 OE S	32 T5 OE K	32	1,290	645	3,890	50 T10 OE S	50 T10 OE K	50	5,230	2,615	16,450
50 T5 OE S	50 T5 OE K	50	1,970	985	5,950	75 T10 OE S	75 T10 OE K	75	8,260	4,130	25,960
75 T5 OE S	75 T5 OE K	75	2,680	1,340	8,100	85 T10 OE S	85 T10 OE K	85	8,800	4,400	27,950
100 T5 OE S	100 T5 OE K	100	3,400	1,700	10,200	100 T10 OE S	100 T10 OE K	100	10,470	5,235	32,900
						150 T10 OE S	150 T10 OE K	150	12,000	6,000	38,000
T 20 mm											
25 T20 OE S	25 T20 OE K	25	3,660	1,830	12,460						
32 T20 OE S	32 T20 OE K	32	4,880	2,440	16,620						
50 T20 OE S	50 T20 OE K	50	8,050	4,025	27,430						
75 T20 OE S	75 T20 OE K	75	12,200	6,100	41,560						
100 T20 OE S	100 T20 OEK	100	16,100	8,050	54,860						
125 T20 OE S	125 T20 OE K	125	21,050	10,500	42,000						
150 T20 OE S		150	25,300	12,650	86,400						

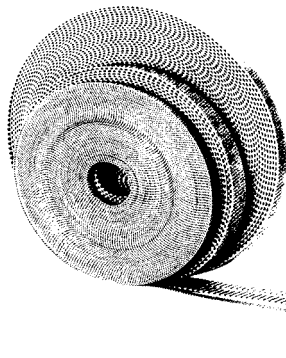
Metric AT Pitch (Open End Rolls Available in 30m, 50m, 100m)

AT 5 mm						AT 10 mm					
5 AT5 OE S		5			1,020	10 AT10 OE S		10			
6 AT5 OE S	6 AT5 OE K	6	395		1,225	15 AT10 OE S		15			
10 AT5 OE S		10	630	315	1,960	16 AT10 OE S	16 AT10 OE K	16	2,190		7,480
12 AT5 OE S	12 AT5 OE K	12	940	375	2,350	20 AT10 OE S	20 AT10 OE K	20	2,900		
15 AT5 OE S		15	1,180	585	3,675	25 AT10 OE S	25 AT10 OE K	25	3,660	1,830	12,450
16 AT5 OE S	16 AT5 OE K	16	1,260	630	3,920	30 AT10 OE S		30	4,550		
20 AT5 OE S	20 AT5 OE K	20	1,730	865	5,390	32 AT10 OE S	32 AT10 OE K	32	4,880	2,440	16,600
25 AT5 OE S	25 AT5 OE K	25	2,050	1,025	6,370	40 AT10 OE S	40 AT10 OE K	40	6,400		
32 AT5 OE S	32 AT5 OE K	32	2,680	1,340	8,330	50 AT10 OE S	50 AT10 OE K	50	8,050	4,025	27,400
50 AT5 OE S	50 AT5 OE K	50	4,255	2,125	13,230	75 AT10 OE S		75	12,200	6,100	41,500
75 AT5 OE S	75 AT5 OE K	75	6,390	3,190	19,900	85 AT10 OE S	85 AT10 OE K	85	14,000		
100 AT5 OE S	100 AT5 OE K	100	8,600	4,300	26,500	100 AT10 OE S	100 AT10 OE K	100	16,600	8,300	56,500
						125 AT10 OE S	125 AT10 OE K	125	21,000		
						150 AT10 OE S	150 AT10 OE K	150	25,300	12,600	86,400
AT 20 mm											
25 AT20 OE S	25 AT20 OE K	25	6,020	3,010	19,630						
32 AT20 OE S	32 AT20 OE K	32	7,400	3,700	24,160						
50 AT20 OE S	50 AT20 OE K	50	12,040	6,020	39,270						
75 AT20 OE S	75 AT20 OE K	75	18,050	9,025	58,900						
100 AT20 OE S	100 AT20 OE K	100	25,000	12,500	81,560						
120 AT20 OE S	120 AT20 OE K	120	29,000	14,000	117,000						
150 AT20 OE S		150	36,400	18,050	119,000						
200 AT20 OE S	200 AT20 OE K	200	49,100	24,550	160,500						

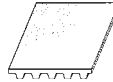
Open End and Spliced Synchronous Belting

Polyurethane with Steel or Kevlar® Cords

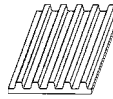
For Special Requirements



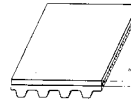
Timing Belt Clamping Plates available



PAR Type belt (Nylon facing on back of belt)



PAZ Type belt (Nylon facing on teeth of belt)



Belt with polyurethane back cover

Metric T Pitch (Open End Rolls Available in 30m, 50m, 100m)

T 5 mm						T 10 mm					
Steel Cord Belt No.	Kevlar® Cord Belt No.	Width mm	Max Traction Load		Breaking Strength N	Steel Cord Belt No.	Kevlar® Cord Belt No.	Width mm	Max Traction Load		Breaking Strength N
			Open End N	Spliced N					Open End N	Spliced N	
5 T5 OE S		5	150		475	10 T10 OE S	10 T10 OE K	10	1,050		3,350
6 T5 OE S	6 T5 OE K	6	190		570	12 T10 OE S	12 T10 OE K	12	1,280		4,020
8 T5 OE S	8 T5 OE K	8	240		730	15 T10 OE S		15	1,520		4,790
10 T5 OE S	10 T5 OE K	10	305	150	915	16 T10 OE S	16 T10 OE K	16	1,630	815	5,110
12 T5 OE S	12 T5 OE K	12	440	220	1,300	20 T10 OE S	20 T10 OE K	20	2,030	1,010	6,430
15 T5 OE S		15	570	285	1,715	25 T10 OE S	25 T10 OE K	25	2,560	1,280	8,040
16 T5 OE S	16 T5 OE K	16	610	305	1,830	30 T10 OE S	30 T10 OE K	30	3,150	1,550	9,935
20 T5 OE S	20 T5 OE K	20	780	390	2,300	32 T10 OE S	32 T10 OE K	32	3,370	1,685	10,600
25 T5 OE S	25 T5 OE K	25	985	490	2,975	40 T10 OE S	40 T10 OE K	40	4,150	2,075	13,160
32 T5 OE S	32 T5 OE K	32	1,290	645	3,890	50 T10 OE S	50 T10 OE K	50	5,230	2,615	16,450
50 T5 OE S	50 T5 OE K	50	1,970	985	5,950	75 T10 OE S	75 T10 OE K	75	8,260	4,130	25,960
75 T5 OE S	75 T5 OE K	75	2,680	1,340	8,100	85 T10 OE S	85 T10 OE K	85	8,800	4,400	27,950
100 T5 OE S	100 T5 OE K	100	3,400	1,700	10,200	100 T10 OE S	100 T10 OE K	100	10,470	5,235	32,900
						150 T10 OE S	150 T10 OE K	150	12,000	6,000	38,000

T 20 mm					
25 T20 OE S	25 T20 OE K	25	3,660	1,830	12,460
32 T20 OE S	32 T20 OE K	32	4,880	2,440	16,620
50 T20 OE S	50 T20 OE K	50	8,050	4,025	27,430
75 T20 OE S	75 T20 OE K	75	12,200	6,100	41,560
100 T20 OE S	100 T20 OEK	100	16,100	8,050	54,860
125 T20 OE S	125 T20 OE K	125	21,050	10,500	42,000
150 T20 OE S		150	25,300	12,650	86,400

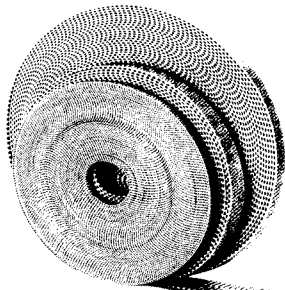
Metric AT Pitch (Open End Rolls Available in 30m, 50m, 100m)

AT 5 mm						AT 10 mm					
5 AT5 OE S		5			1,020	10 AT10 OE S		10			
6 AT5 OE S	6 AT5 OE K	6	395		1,225	15 AT10 OE S		15			
10 AT5 OE S		10	630	315	1,960	16 AT10 OE S	16 AT10 OE K	16	2,190		7,480
12 AT5 OE S	12 AT5 OE K	12	940	375	2,350	20 AT10 OE S	20 AT10 OE K	20	2,900		
15 AT5 OE S		15	1,180	585	3,675	25 AT10 OE S	25 AT10 OE K	25	3,660	1,830	12,450
16 AT5 OE S	16 AT5 OE K	16	1,260	630	3,920	30 AT10 OE S		30	4,550		
20 AT5 OE S	20 AT5 OE K	20	1,730	865	5,390	32 AT10 OE S	32 AT10 OE K	32	4,880	2,440	16,600
25 AT5 OE S	25 AT5 OE K	25	2,050	1,025	6,370	40 AT10 OE S	40 AT10 OE K	40	6,400		
32 AT5 OE S	32 AT5 OE K	32	2,680	1,340	8,330	50 AT10 OE S	50 AT10 OE K	50	8,050	4,025	27,400
50 AT5 OE S	50 AT5 OE K	50	4,255	2,125	13,230	75 AT10 OE S		75	12,200	6,100	41,500
75 AT5 OE S	75 AT5 OE K	75	6,390	3,190	19,900	85 AT10 OE S	85 AT10 OE K	85	14,000		
100 AT5 OE S	100 AT5 OE K	100	8,600	4,300	26,500	100 AT10 OE S	100 AT10 OE K	100	16,600	8,300	56,500
						125 AT10 OE S	125 AT10 OE K	125	21,000		
						150 AT10 OE S	150 AT10 OE K	150	25,300	12,600	86,400

AT 20 mm					
25 AT20 OE S	25 AT20 OE K	25	6,020	3,010	19,630
32 AT20 OE S	32 AT20 OE K	32	7,400	3,700	24,160
50 AT20 OE S	50 AT20 OE K	50	12,040	6,020	39,270
75 AT20 OE S	75 AT20 OE K	75	18,050	9,025	58,900
100 AT20 OE S	100 AT20 OE K	100	25,000	12,500	81,560
120 AT20 OE S	120 AT20 OE K	120	29,000	14,000	117,000
150 AT20 OE S		150	36,400	18,050	119,000
200 AT20 OE S	200 AT20 OE K	200	49,100	24,550	160,500

Open End and Spliced Synchronous Belting

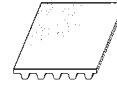
Polyurethane with Steel or Kevlar® Cords



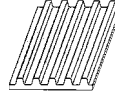
Timing Belt Clamping Plates available



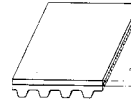
For Special Requirements



PAR Type belt (Nylon facing on back of belt)



PAZ Type belt (Nylon facing on teeth of belt)



Belt with polyurethane back cover

HTD Pitch (Open End Rolls Available in 30m, 50m, 100m)

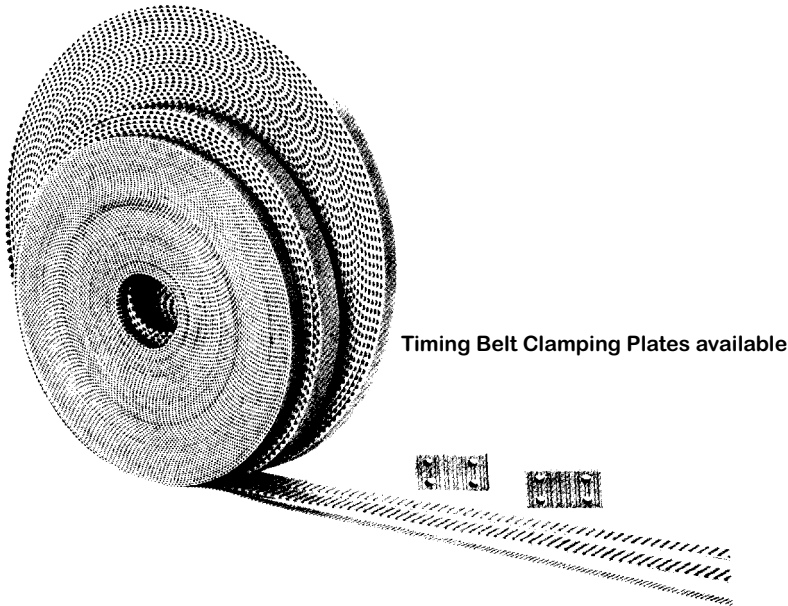
3M						5M					
Steel Cord Belt No.	Kevlar® Cord Belt No.	Width mm	Max Traction Load		Breaking Strength N	Steel Cord Belt No.	Kevlar® Cord Belt No.	Width mm	Max Traction Load		Breaking Strength N
			Open End N	Spliced N					Open End N	Spliced N	
5 3M OE S		5	152	76	470	5 5M OE K	5 5M OE S	5	330	151	940
10 3M OE S		10	315	158	980	10 5M OE K	10 5M OE S	10	630	315	1,960
15 3M OE S		15	590	295	1,838	15 5M OE K	15 5M OE S	15	1,180	590	3,675
25 3M OES		25	1,025	513	3,185	25 5M OEK	25 5M OES	25	2,050	1,025	6,370
50 3M OE S		50	2,128	1,064	6,615	50 5M OE K	50 5M OE S	50	4,255	2,128	13,230
8M						14 M					
10 8M OE S	10 8M OE K	10	1,220	610	4,150	25 14M OE S	25 14M OE K	25	6,020	3,010	19,630
15 8M OE S	15 8M OE K	15	1,950	975	6,640	40 14M OE S	40 14M OE K	40	9,260	4,630	30,200
20 8M OE S	20 8M OE K	20	2,920	1,460	9,960	55 14M OE S	55 14M OE K	55	11,570	5,785	37,760
25 8M OE S	25 8M OE K	25	3,900	1,950	13,280	85 14M OE S	85 14M OE K	85	20,830	10,415	67,960
30 8M OE S	30 8M OE K	30	4,390	2,195	14,940	100 14M OE S	100 14M OE K	100	25,000	12,500	81,560
50 8M OE S	50 8M OE K	50	8,050	4,025	27,400		114 14M OE K	114	30,000	15,000	98,000
85 8M OE S	85 8M OE K	85	13,900	6,950	47,320	120 14M OE S	120 14M OE K	120	36,000	18,000	117,500
100 8M OE S	100 8M OE K	100	16,600	8,300	56,500						

Super Torque (Open End Rolls Available in 30m, 50m, 100m)

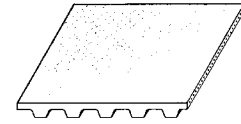
S5M						S8M					
Steel Cord Belt No.	Kevlar® Cord Belt No.	Width mm	Max Traction Load		Breaking Strength N	Steel Cord Belt No.	Kevlar® Cord Belt No.	Width mm	Max Traction Load		Breaking Strength N
			Open End N	Spliced N					Open End N	Spliced N	
5 S5M OE S		5	303	151	940	10 S8M OE S		10	1,220	610	4,150
10 S5M OE S		10	630	315	1,960	15 S8M OE S		15	1,950	975	6,640
15 S5M OE S		15	1,180	590	3,675	20 S8M OES		20	2,920	1,460	9,960
25 S5M OES		25	2,050	1,025	6,370	30 S8M OE S		30	4,390	2,195	14,940
50 S5M OE S		50	4,255	2,128	13,230	50 S5M OE S		50	8,050	4,025	27,400
						85 S8M OE S		85	13,900	6,950	47,320
						100 S8M OE S		100	16,600	8,300	56,500

Open End and Spliced Synchronous Belting

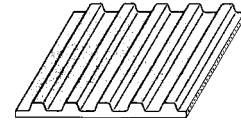
Polyurethane with Steel or Kevlar® Cords



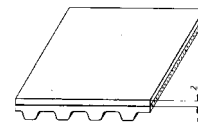
For Special Requirements



PAR Type belt (Nylon facing on back of belt)



PAZ Type belt (Nylon facing on teeth of belt)



Belt with polyurethane back cover

American Standard (Inch Pitch) (Open End Available in 30m, 50m, 100m)

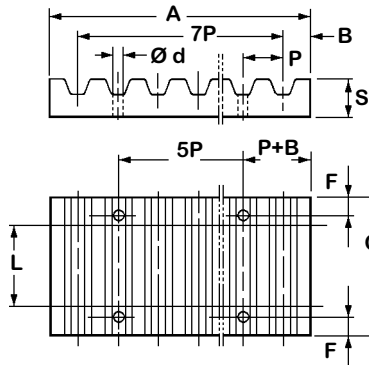
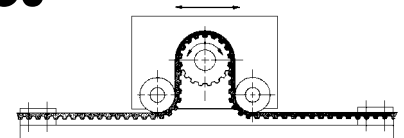
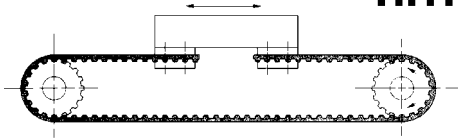
XL (1/5")						L (3/8")					
Steel Cord Belt No.	Kevlar® Cord Belt No.	Width Inch	Max Traction Load		Breaking Strength lbf	Steel Cord Belt No.	Kevlar® Cord Belt No.	Width Inch	Max Traction Load		Breaking Strength lbf
			Open End lbf	Spliced lbf					Open End lbf	Spliced lbf	
025 XL OE S	025 XL OE K	0.25	43		128	037 L OE S	037 L OE K	0.37	142	71	418
031 XL OE S	031 XL OE K	0.31	51		154	050 L OE S	050 L OE K	0.50	212	106	661
037 XL OE S	037 XL OE K	0.37	69	34	206	075 L OE S	075 L OE K	0.75	335	167	1045
050 XL OE S	050 XL OE K	0.50	101	51	308	100 L OE S	100 L OE K	1.00	461	230	1360
075 XL OE S	075 XL OE K	0.75	162	81	488	150 L OE S	150 L OE K	1.50	708	354	2203
100 XL OE S	100 XL OE K	1.00	221	110	669	200 L OE S	200 L OE L	2.00	955	478	2974
150 XL OE S		1.50	239	120	718	300 L OE S		3.00	1980	989	6497
200 XL OE S	200 XL OE K	2.00	461	230	1387	400 L OE S	400 L OE K	4.00	4103	2051	14219

American Standard (Inch Pitch)

H (1/2")						XH (7/8")					
050 H OE S	050 H OE K	0.50	261	130	821	100 XH OE S	100 XH OE K	1.00	823	411	2801
075 H OE S	075 H OE K	0.75	443	221	1396	150 XH OE S	150 XH OE K	1.50	1261	631	4294
100 H OE S	100 H OE K	1.00	575	288	1807	200 XH OE S	200 XH OE K	2.00	1810	905	6160
150 H OE S	150 H OE K	1.50	836	418	2630	300 XH OE S	300 XH OE K	3.00	2743	1371	9329
200 H OE S	200 H OE K	2.00	1176	588	3698	400 XH OE S	400 XH OE K	4.00	3619	1810	12333
300 H OE S	300 H OE K	3.00	1675	837	5687	600 XH OE S	600 XH OE K	6.00	5687	2844	19423
400 H OE S	400 H OE K	4.00	2354	1177	7396						
500 H OE S		5.00	3033	1516	9104						
600 H OE S		6.00	3709	1855	10790						

Timing Belt Clamping Plates

Material: Aluminum

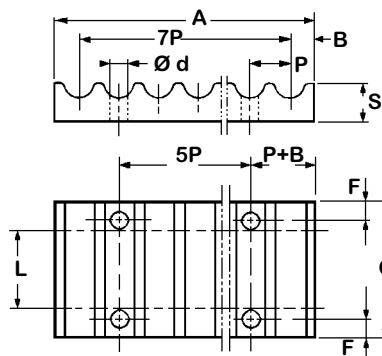


American (Imperial) Pitch Clamp

Pitch	F	Ø d	B	A	S	L (belt width)				
						025	037	050	075	100
						C (clamp width)				
XL	6	5.5	3.5	42.5	8	25.5	28.5			
L	8	9	5	76.6	15			39	45	51.5
H	10	11	9	106.9	22			45	51	57.5

Metric Pitch Clamp

Pitch	F	Ø d	B	A	S	L (belt width)				
						10	16	25	32	50
						C (clamp width)				
T5	6	5.5	3.2	41.8	8	29	35	44		
T10	8	9	5	80	15			50	57	75
AT5	6	5.5	3.2	41.8	8	29	35	44		
AT10	8	9	5	80	15			50	57	75



HTD® / Super Torque Pitch Clamp (Interchangeable for either belt profile)

Pitch	F	Ø d	B	A	S	L (belt width)											
						09	15	20	25	30	40	50	55	85	100	115	170
						C (clamp width)											
5M / S5M	6	5.5	3.2	41.8	8	28	34										
8M / S8M	8	9	5	66	15					55		75		110			
14M / S14M	10	11	9	116	22						71		86	116	131	146	201

ALSO PRODUCED TO CUSTOMER DRAWINGS

Long Length Clamping Plates (maximum length 4 m)



American Metric® Corporation