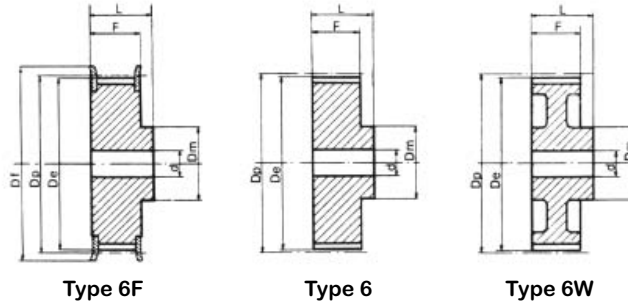


# American Standard (Inch Pitch) MPB Synchronous Belt Pulleys



Bored to Size Pulleys Available in Standard ANSI or Metric (ISO) Bores, Keyways and (2) Setscrews

## XL 037 Pitch 1/5" (5.08 mm)

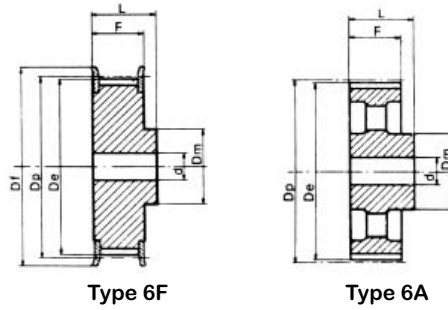
Part No.	Type/Mat.	Teeth	Dp	De	Approx. Df	Approx. Dm	Approx. F	Approx. L	Bore*2 ±1/16"	Weight lbs	Flange Size*1 mm
10 XL 037	6F/A	10	0.64	0.62	7/8	3/8	9/16	13/16	1/4	0.02	12.5x23x1
11 XL 037	6F/A	11	0.70	0.68	7/8	3/8	9/16	13/16	1/4	0.02	12.5x23x1
12 XL 037	6F/A	12	0.76	0.74	1	3/8	9/16	13/16	1/4	0.02	15x25x1
13 XL 037	6F/A	13	0.83	0.81	1	3/8	9/16	13/16	1/4	0.02	15x25x1
14 XL 037	6F/A	14	0.89	0.91	1 1/8	9/16	9/16	13/16	1/4	0.04	17.8x28x1
15 XL 037	6F/A	15	0.96	0.94	1 1/8	9/16	9/16	13/16	1/4	0.04	17.8x28x1
16 XL 037	6F/A	16	1.02	1.00	1 1/4	5/8	9/16	13/16	1/4	0.07	20x32x1
17 XL 037	6F/A	17	1.08	1.06	1 1/4	13/16	9/16	13/16	1/4	0.07	23x32x1
18 XL 037	6F/A	18	1.15	1.13	1 3/8	13/16	9/16	13/16	1/4	0.09	23x35x1
19 XL 037	6F/A	19	1.21	1.19	1 3/8	13/16	9/16	7/8	1/4	0.09	23x35x1
20 XL 037	6F/A	20	1.27	1.25	1 1/2	15/16	9/16	7/8	1/4	0.11	26.5x38x1
21 XL 037	6F/A	21	1.34	1.32	1 1/2	15/16	9/16	7/8	1/4	0.11	26.5x38x1
22 XL 037	6F/A	22	1.40	1.38	1 5/8	1	9/16	7/8	1/4	0.13	30x41x1
24 XL 037	6F/A	24	1.53	1.51	1 3/4	1 3/16	9/16	7/8	5/16	0.13	32.5x44x1
26 XL 037	6F/A	26	1.66	1.64	1 7/8	1 3/16	9/16	7/8	5/16	0.20	37x48x1
27 XL 037	6F/A	27	1.72	1.70	1 7/8	1 3/16	9/16	7/8	5/16	0.20	37x48x1
28 XL 037	6F/A	28	1.78	1.76	2	1 5/16	9/16	7/8	5/16	0.22	40x51x1
29 XL 037	6F/A	29	1.85	1.83	2	1 5/16	9/16	7/8	5/16	0.24	40x51x1
30 XL 037	6F/A	30	1.91	1.89	2 1/8	1 1/2	9/16	7/8	5/16	0.26	43x54x1
32 XL 037	6F/A	32	2.04	2.02	2 1/4	1 1/2	9/16	1	5/16	0.26	47x57x1
34 XL 037	6F/A	34	2.16	2.14	2 3/8	1 1/2	9/16	1	5/16	0.29	49x61x1
35 XL 037	6F/A	35	2.23	2.21	2 3/8	1 1/2	9/16	1	5/16	0.31	49x61x1
36 XL 037	6/A	36	2.29	2.27		1 3/4	9/16	1	5/16	0.31	
38 XL 037	6/A	38	2.42	2.40		1 3/4	9/16	1	5/16	0.33	
39 XL 037	6/A	39	2.48	2.46		1 3/4	9/16	1	5/16	0.33	
40 XL 037	6/A	40	2.55	2.53		1 3/4	9/16	1	5/16	0.35	
42 XL 037	6/A	42	2.67	2.65		1 3/4	9/16	1	5/16	0.40	
44 XL 037	6/A	44	2.80	2.78		1 3/4	9/16	1	5/16	0.42	
45 XL 037	6/A	45	2.86	2.84		1 3/4	9/16	1	3/8	0.42	
48 XL 037	6/A	48	3.06	3.04		1 3/4	9/16	1	3/8	0.42	
52 XL 037	6W/A	52	3.31	3.29		1 3/4	9/16	1	3/8	0.42	
56 XL 037	6W/A	56	3.56	3.54		1 3/4	9/16	1	3/8	0.44	
57 XL 037	6W/A	57	3.63	3.61		1 3/4	9/16	1	3/8	0.44	
60 XL 037	6W/A	60	3.82	3.80		1 3/4	9/16	1	3/8	0.48	
68 XL 037	6W/A	68	4.33	4.31		1 3/4	9/16	1	3/8	0.53	
70 XL 037	6W/A	70	4.46	4.44		1 3/4	9/16	1	3/8	0.55	
72 XL 037	6W/A	72	4.58	4.56		1 3/4	9/16	1	3/8	0.57	

\*1Recommended flange size (I.D. x O.D. x Thickness); steel.  
 Material: /A = Aluminum • /C = Cast Iron • /S = Steel  
 Metric tolerances correspond to ISO standard H9 for bores and keyways. Inch tolerances correspond to ANSI B17.1 for bores and keyways.

\*2 Some bores smaller than listed. Some may only have a starter hole.



# American Standard (Inch Pitch) MPB Synchronous Belt Pulleys



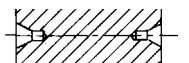
Bored to Size Pulleys  
Available in Standard ANSI  
or Metric (ISO) Bores,  
Keyways and (2) Setscrews

L 050 Pitch 3/8" (9.525 mm)

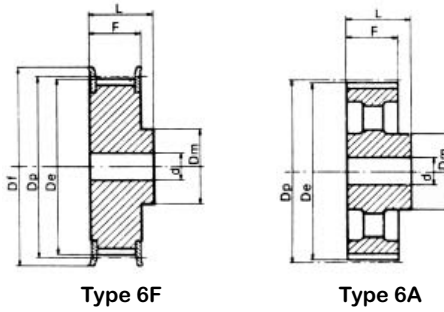
Part No.	Type/ Mat.	Teeth	Dp	De	Approx. Df	Approx. Dm	Approx. F	Approx. L	Bore*2 ±1/16"	Weight lbs	Flange Size*1 mm
10 L 050	6F/S	10	1.19	1.16	1 7/16	13/16	3/4	1 1/8	5/16	0.24	25x37x1.5
11 L 050	6F/S	11	1.31	1.28	1 1/2	15/16	3/4	1 3/16	5/16	0.31	25x37x1.5
12 L 050	6F/S	12	1.43	1.40	1 5/8	15/16	3/4	1 3/16	5/16	0.37	31x43x1.5
13 L 050	6F/S	13	1.55	1.52	1 3/4	1 1/8	3/4	1 3/16	5/16	0.46	32.5x44x1.5
14 L 050	6F/S	14	1.67	1.64	1 7/8	1 1/8	3/4	1 3/16	3/8	0.53	37x48x1.5
15 L 050	6F/S	15	1.79	1.76	2	1 5/16	3/4	1 3/16	3/8	0.64	38.5x51x1.5
16 L 050	6F/S	16	1.91	1.88	2 1/8	1 7/16	3/4	1 1/4	3/8	0.73	43x54x1.5
17 L 050	6F/S	17	2.03	2.00	2 1/4	1 7/16	3/4	1 1/4	3/8	0.84	46x57x1.5
18 L 050	6F/S	18	2.15	2.12	2 3/8	1 9/16	3/4	1 1/4	3/8	0.97	48x60x1.5
19 L 050	6F/S	19	2.27	2.24	2 1/2	1 9/16	3/4	1 1/4	3/8	1.04	47x64x1.5
20 L 050	6F/S	20	2.39	2.36	2 5/8	1 9/16	3/4	1 1/4	3/8	1.12	53x66.5x1.5
21 L 050	6F/S	21	2.51	2.48	2 13/16	1 3/4	3/4	1 1/4	3/8	1.32	53x70x1.5
22 L 050	6F/S	22	2.63	2.60	2 15/16	1 3/4	3/4	1 1/4	3/8	1.41	57x75x1.5
23 L 050	6F/S	23	2.75	2.72	3 1/8	2 3/16	3/4	1 1/4	3/8	1.72	60x79x1.5
24 L 050	6F/S	24	2.86	2.83	3 1/8	2 3/16	3/4	1 1/4	3/8	1.79	60x79x1.5
25 L 050	6F/S	25	2.98	2.95	3 1/4	2 5/16	3/4	1 1/4	3/8	1.96	64x82.5x1.5
26 L 050	6F/S	26	3.10	3.07	3 7/16	2 5/16	3/4	1 1/4	1/2	2.07	68x86x1.5
27 L 050	6F/S	27	3.22	3.19	3 7/16	2 5/16	3/4	1 1/4	1/2	2.18	68x86x1.5
28 L 050	6F/S	28	3.34	3.31	3 9/16	2 5/16	3/4	1 1/4	1/2	2.29	73x91x1.5
30 L 050	6F/S	30	3.58	3.55	3 13/16	2 3/4	3/4	1 1/4	1/2	2.58	79x97x1.5
32 L 050	6F/S	32	3.82	3.79	4 1/16	2 3/4	3/4	1 1/4	1/2	3.11	82.5x102x1.5
33 L 050	6F/S	33	3.94	3.91	4 3/16	2 3/4	3/4	1 1/4	1/2	3.28	86x106x1.5
34 L 050	6F/S	34	4.06	4.03	4 3/8	2 3/4	3/4	1 1/4	1/2	3.46	91x112x1.5
35 L 050	6F/S	35	4.18	4.15	4 3/8	2 3/4	3/4	1 1/4	1/2	3.57	91x112x1.5
36 L 050	6F/S	36	4.30	4.27	4 1/2	2 3/4	3/4	1 1/4	1/2	3.75	94x115x1.5
40 L 050	6F/S	40	4.78	4.74	5	2 3/4	3/4	1 1/4	1/2	4.47	107x128x1.5
42 L 050	6F/S	42	5.01	4.98	5 5/16	2 3/4	3/4	1 1/4	1/2	4.87	115x135x1.5
44 L 050	6F/S	44	5.25	5.22	5 1/2	2 3/4	3/4	1 1/4	1/2	5.25	120x142x1.5
45 L 050	6F/S	45	5.37	5.34	5 5/8	2 3/4	3/4	1 1/4	1/2	5.47	120x142x1.5
48 L 050	6F/S	48	5.73	5.70	6	2 3/4	3/4	1 1/4	1/2	6.13	130x150x1.5
50 L 050	6A/C	50	5.97	5.94		2 3/4	3/4	1 1/4	9/16		
52 L 050	6A/C	52	6.21	6.18		2 3/4	3/4	1 1/4	9/16		
56 L 050	6A/C	56	6.68	6.65		2 3/4	3/4	1 1/4	9/16		
57 L 050	6A/C	57	6.80	6.77		2 3/4	3/4	1 1/4	9/16		
60 L 050	6A/C	60	7.16	7.13		2 15/16	3/4	1 5/8	9/16		
72 L 050	6A/C	72	8.59	8.56		2 15/16	3/4	1 5/8	9/16		
84 L 050	6A/C	84	10.03	10.00		2 15/16	3/4	1 5/8	9/16		
96 L 050	6A/C	96	11.46	11.43		2 15/16	3/4	1 5/8	9/16		

\*1 Recommended flange size (I.D. x O.D. x Thickness); steel.  
Material: /A = Aluminum • /C = Cast Iron • /S = Steel  
Metric tolerances correspond to ISO standard H9 for bores and  
keyways. Inch tolerances correspond to ANSI B17.1 for bores  
and keyways.

\*2 Some bores smaller  
than listed. Some may  
only have a starter hole.



# American Standard (Inch Pitch) MPB Synchronous Belt Pulleys



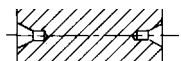
Bored to Size Pulleys  
Available in Standard ANSI  
or Metric (ISO) Bores,  
Keyways and (2) Setscrews

## L 075 Pitch 3/8" (9.525 mm)

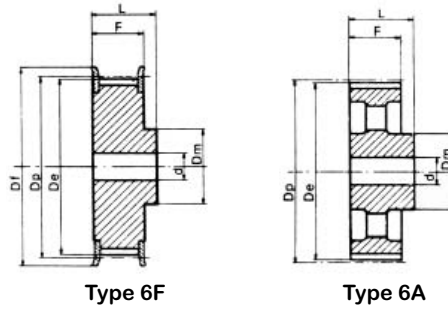
Part No.	Type/ Mat.	Teeth	Dp	De	Approx. Df	Approx. Dm	Approx. F	Approx. L	Bore*2 ±1/16"	Weight lbs	Flange Size*1 mm
10 L 075	6F/S	10	1.19	1.16	1 7/16	13/16	1	1 1/2	5/16	0.31	25x37x1.5
11 L 075	6F/S	11	1.31	1.28	1 1/2	15/16	1	1 1/2	5/16	0.40	25x37x1.5
12 L 075	6F/S	12	1.43	1.40	1 5/8	15/16	1	1 1/2	5/16	0.48	31x43x1.5
13 L 075	6F/S	13	1.55	1.52	1 3/4	1 1/8	1	1 1/2	5/16	0.57	32.5x44x1.5
14 L 075	6F/S	14	1.67	1.64	1 7/8	1 1/8	1	1 1/2	1/2	0.66	37x48x1.5
15 L 075	6F/S	15	1.79	1.76	2	1 5/16	1	1 1/2	1/2	0.82	38.5x51x1.5
16 L 075	6F/S	16	1.91	1.88	2 1/8	1 7/16	1	1 1/2	1/2	0.95	43x54x1.5
17 L 075	6F/S	17	2.03	2.00	2 1/4	1 7/16	1	1 1/2	1/2	1.01	46x57x1.5
18 L 075	6F/S	18	2.15	2.12	2 3/8	1 9/16	1	1 1/2	1/2	1.19	48x60x1.5
19 L 075	6F/S	19	2.27	2.24	2 1/2	1 9/16	1	1 1/2	1/2	1.28	47x64x1.5
20 L 075	6F/S	20	2.39	2.36	2 5/8	1 9/16	1	1 1/2	1/2	1.41	53x66.5x1.5
21 L 075	6F/S	21	2.51	2.48	2 13/16	1 3/4	1	1 1/2	1/2	1.56	53x70x1.5
22 L 075	6F/S	22	2.63	2.60	2 15/16	1 3/4	1	1 1/2	1/2	1.74	57x75x1.5
23 L 075	6F/S	23	2.75	2.72	3 1/8	2 3/16	1	1 1/2	1/2	2.07	60x79x1.5
24 L 075	6F/S	24	2.86	2.83	3 1/8	2 3/16	1	1 1/2	1/2	2.20	60x79x1.5
25 L 075	6F/S	25	2.98	2.95	3 1/4	2 5/16	1	1 1/2	1/2	2.42	64x82.5x1.5
26 L 075	6F/S	26	3.10	3.07	3 7/16	2 5/16	1	1 1/2	1/2	2.56	68x86x1.5
27 L 075	6F/S	27	3.22	3.19	3 7/16	2 5/16	1	1 1/2	1/2	2.69	68x86x1.5
28 L 075	6F/S	28	3.34	3.31	3 9/16	2 5/16	1	1 1/2	1/2	2.87	73x91x1.5
30 L 075	6F/S	30	3.58	3.55	3 13/16	2 3/4	1	1 1/2	1/2	3.24	79x97x1.5
32 L 075	6F/S	32	3.82	3.79	4 1/16	2 3/4	1	1 1/2	1/2	3.86	82.5x102x1.5
33 L 075	6F/S	33	3.94	3.91	4 3/16	2 3/4	1	1 1/2	1/2	4.08	86x106x1.5
34 L 075	6F/S	34	4.06	4.03	4 3/8	2 3/4	1	1 1/2	1/2	4.25	91x112x1.5
35 L 075	6F/S	35	4.18	4.15	4 3/8	2 3/4	1	1 1/2	1/2	4.47	91x112x1.5
36 L 075	6F/S	36	4.30	4.27	4 1/2	2 3/4	1	1 1/2	1/2	4.72	94x115x1.5
40 L 075	6F/S	40	4.78	4.74	5	2 3/4	1	1 1/2	1/2	5.64	107x128x1.5
42 L 075	6F/S	42	5.01	4.98	5 5/16	2 3/4	1	1 1/2	1/2	6.19	115x135x1.5
44 L 075	6F/S	44	5.25	5.22	5 1/2	2 3/4	1	1 1/2	1/2	6.66	120x142x1.5
45 L 075	6F/S	45	5.37	5.34	5 5/8	2 3/4	1	1 1/2	1/2	6.96	120x142x1.5
48 L 075	6F/S	48	5.73	5.70	6	2 3/4	1	1 1/2	1/2	7.87	130x150x1.5
50 L 075	6A/C	50	5.97	5.94		2 3/4	1	1 1/2	9/16		
52 L 075	6A/C	52	6.21	6.18		2 3/4	1	1 1/2	9/16		
56 L 075	6A/C	56	6.68	6.65		2 3/4	1	1 1/2	9/16		
57 L 075	6A/C	57	6.80	6.77		2 3/4	1	1 1/2	9/16		
60 L 075	6A/C	60	7.16	7.13		2 15/16	1	1 3/4	9/16		
72 L 075	6A/C	72	8.59	8.56		2 15/16	1	1 3/4	9/16		
84 L 075	6A/C	84	10.03	10.00		2 15/16	1	1 3/4	9/16		
96 L 075	6A/C	96	11.46	11.43		2 15/16	1	1 3/4	9/16		

\*1 Recommended flange size (I.D. x O.D. x Thickness); steel.  
Material: /A = Aluminum • /C = Cast Iron • /S = Steel  
Metric tolerances correspond to ISO standard H9 for bores and keyways. Inch tolerances correspond to ANSI B17.1 for bores and keyways.

\*2 Some bores smaller than listed. Some may only have a starter hole.



# American Standard (Inch Pitch) MPB Synchronous Belt Pulleys



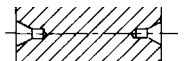
Bored to Size Pulleys  
Available in Standard ANSI  
or Metric (ISO) Bores,  
Keyways and (2) Setscrews

## L 100 Pitch 3/8" (9.525 mm)

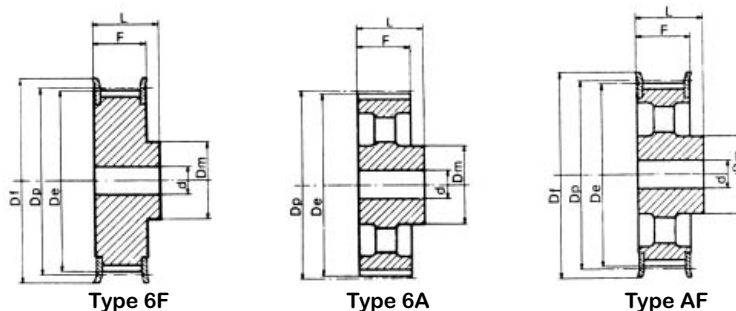
Part No.	Type/ Mat.	Teeth	Dp	De	Approx. Df	Approx. Dm	Approx. F	Approx. L	Bore*2 ±1/16"	Weight lbs	Flange Size*1 mm
10 L 100	6F/S	10	1.19	1.16	1 7/16	13/16	1 1/4	1 3/4	5/16	0.37	25x37x1.5
11 L 100	6F/S	11	1.31	1.28	1 1/2	15/16	1 1/4	1 3/4	5/16	0.48	25x37x1.5
12 L 100	6F/S	12	1.43	1.40	1 5/8	15/16	1 1/4	1 3/4	5/16	0.57	31x43x1.5
13 L 100	6F/S	13	1.55	1.52	1 3/4	1 1/8	1 1/4	1 3/4	5/16	0.71	32.5x44x1.5
14 L 100	6F/S	14	1.67	1.64	1 7/8	1 1/8	1 1/4	1 3/4	1/2	0.77	37x48x1.5
15 L 100	6F/S	15	1.79	1.76	2	1 5/16	1 1/4	1 3/4	1/2	0.95	38.5x51x1.5
16 L 100	6F/S	16	1.91	1.88	2 1/8	1 7/16	1 1/4	1 3/4	1/2	1.10	43x54x1.5
17 L 100	6F/S	17	2.03	2.00	2 1/4	1 7/16	1 1/4	1 3/4	1/2	1.23	46x57x1.5
18 L 100	6F/S	18	2.15	2.12	2 3/8	1 9/16	1 1/4	1 3/4	1/2	1.41	48x60x1.5
19 L 100	6F/S	19	2.27	2.24	2 1/2	1 9/16	1 1/4	1 3/4	1/2	1.54	47x64x1.5
20 L 100	6F/S	20	2.39	2.36	2 5/8	1 9/16	1 1/4	1 3/4	1/2	1.70	53x66.5x1.5
21 L 100	6F/S	21	2.51	2.48	2 13/16	1 3/4	1 1/4	1 3/4	9/16	1.94	53x70x1.5
22 L 100	6F/S	22	2.63	2.60	2 15/16	1 3/4	1 1/4	1 3/4	9/16	2.09	57x75x1.5
23 L 100	6F/S	23	2.75	2.72	3 1/8	2 3/16	1 1/4	1 3/4	9/16	2.45	60x79x1.5
24 L 100	6F/S	24	2.86	2.83	3 1/8	2 3/16	1 1/4	1 3/4	9/16	2.60	60x79x1.5
25 L 100	6F/S	25	2.98	2.95	3 1/4	2 5/16	1 1/4	1 3/4	9/16	2.87	64x82.5x1.5
26 L 100	6F/S	26	3.10	3.07	3 7/16	2 5/16	1 1/4	1 3/4	9/16	3.09	68x86x1.5
27 L 100	6F/S	27	3.22	3.19	3 7/16	2 5/16	1 1/4	1 3/4	9/16	3.24	68x86x1.5
28 L 100	6F/S	28	3.34	3.31	3 9/16	2 5/16	1 1/4	1 3/4	9/16	3.48	73x91x1.5
30 L 100	6F/S	30	3.58	3.55	3 13/16	2 3/4	1 1/4	1 3/4	9/16	3.92	79x97x1.5
32 L 100	6F/S	32	3.82	3.79	4 1/16	2 3/4	1 1/4	1 3/4	9/16	4.65	82.5x102x1.5
33 L 100	6F/S	33	3.94	3.91	4 3/16	2 3/4	1 1/4	1 3/4	9/16	4.91	86x106x1.5
34 L 100	6F/S	34	4.06	4.03	4 3/8	2 3/4	1 1/4	1 3/4	9/16	5.27	91x112x1.5
35 L 100	6F/S	35	4.18	4.15	4 3/8	2 3/4	1 1/4	1 3/4	9/16	5.40	91x112x1.5
36 L 100	6F/S	36	4.30	4.27	4 1/2	2 3/4	1 1/4	1 3/4	9/16	5.71	94x115x1.5
40 L 100	6F/S	40	4.78	4.74	5	2 3/4	1 1/4	1 3/4	9/16	6.90	107x128x1.5
42 L 100	6F/S	42	5.01	4.98	5 5/16	2 3/4	1 1/4	1 3/4	9/16	7.56	115x135x1.5
44 L 100	6F/S	44	5.25	5.22	5 1/2	2 3/4	1 1/4	1 3/4	9/16	8.20	120x142x1.5
45 L 100	6F/S	45	5.37	5.34	5 5/8	2 3/4	1 1/4	1 3/4	9/16	8.57	120x142x1.5
48 L 100	6F/S	48	5.73	5.70	6	2 3/4	1 1/4	1 3/4	9/16	9.65	130x150x1.5
50 L 100	6A/C	50	5.97	5.94		2 3/4	1 1/4	1 3/4	9/16		
52 L 100	6A/C	52	6.21	6.18		2 3/4	1 1/4	1 3/4	9/16		
56 L 100	6A/C	56	6.68	6.65		2 3/4	1 1/4	1 3/4	9/16		
57 L 100	6A/C	57	6.80	6.77		2 3/4	1 1/4	1 3/4	9/16		
60 L 100	6A/C	60	7.16	7.13		2 15/16	1 1/4	1 3/4	9/16		
72 L 100	6A/C	72	8.59	8.56		2 15/16	1 1/4	1 3/4	9/16		
84 L 100	6A/C	84	10.03	10.00		2 15/16	1 1/4	1 3/4	9/16		
96 L 100	6A/C	96	11.46	11.43		2 15/16	1 1/4	1 3/4	9/16		

\*1 Recommended flange size (I.D. x O.D. x Thickness); steel.  
Material: /A = Aluminum • /C = Cast Iron • /S = Steel  
Metric tolerances correspond to ISO standard H9 for bores and keyways. Inch tolerances correspond to ANSI B17.1 for bores and keyways.

\*2 Some bores smaller than listed. Some may only have a starter hole.



# American Standard (Inch Pitch) MPB Synchronous Belt Pulleys



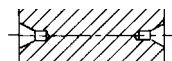
H 075 Pitch 1/2" (12.7 mm)

Part No.	Type/Mat.	Teeth	Dp	De	Approx. Df	Approx. Dm	Approx. F	Approx. L	Bore*2 ±1/16"	Weight lbs	Flange Size*1 mm
14 H 075	6F/S	14	2.23	2.17	2 1/2	1 9/16	1 1/16	1 9/16	1/2	1.28	47x64x1.5
15 H 075	6F/S	15	2.39	2.33	2 5/8	1 3/4	1 1/16	1 9/16	1/2	1.52	53x66.5x1.5
16 H 075	6F/S	16	2.55	2.49	2 13/16	1 3/4	1 1/16	1 9/16	1/2	1.70	53x70x1.5
17 H 075	6F/S	17	2.71	2.65	2 15/16	1 3/4	1 1/16	1 9/16	1/2	1.85	57x75x1.5
18 H 075	6F/S	18	2.86	2.81	3 1/8	2 3/16	1 1/16	1 9/16	1/2	2.23	60x79x1.5
19 H 075	6F/S	19	3.02	2.97	3 1/4	2 3/8	1 1/16	1 9/16	1/2	2.53	64x82.5x1.5
20 H 075	6F/S	20	3.18	3.13	3 7/16	2 7/16	1 1/16	1 9/16	1/2	2.80	72x87x1.5
21 H 075	6F/S	21	3.34	3.29	3 9/16	2 9/16	1 1/16	1 9/16	1/2	3.11	73x91x1.5
22 H 075	6F/S	22	3.50	3.45	3 11/16	2 11/16	1 1/16	1 9/16	1/2	3.42	76x94x1.5
23 H 075	6F/S	23	3.66	3.61	3 13/16	2 13/16	1 1/16	1 9/16	1/2	3.77	79x97x1.5
24 H 075	6F/S	24	3.82	3.77	4 1/16	2 13/16	1 1/16	1 9/16	1/2	4.03	82.5x102x1.5
25 H 075	6F/S	25	3.98	3.92	4 3/16	2 13/16	1 1/16	1 9/16	1/2	4.32	86x106x1.5
26 H 075	6F/S	26	4.14	4.08	4 3/8	3 1/8	1 1/16	1 9/16	1/2	4.83	91x112x1.5
27 H 075	6F/S	27	4.30	4.24	4 1/2	3 1/8	1 1/16	1 9/16	1/2	5.11	94x115x1.5
28 H 075	6F/S	28	4.46	4.40	4 11/16	3 1/8	1 1/16	1 9/16	1/2	5.44	99.5x120x1.5
30 H 075	6F/S	30	4.78	4.72	5	3 1/8	1 1/16	1 9/16	9/16	6.08	107x128x1.5
32 H 075	6F/S	32	5.09	5.04	5 5/16	3 1/8	1 1/16	1 9/16	9/16	6.79	115x135x1.5
33 H 075	6F/S	33	5.25	5.20	5 1/2	3 1/8	1 1/16	1 9/16	9/16	7.16	120x142x1.5
34 H 075	6F/S	34	5.41	5.36	5 5/8	3 1/8	1 1/16	1 9/16	9/16	7.54	120x142x1.5
35 H 075	6F/S	35	5.57	5.52	5 13/16	3 1/8	1 1/16	1 9/16	9/16	7.96	130x150x1.5
36 H 075	6F/S	36	5.73	5.68	6	3 1/8	1 1/16	1 9/16	9/16	8.35	130x150x1.5
38 H 075	6F/S	38	6.05	5.99	6 1/4	3 1/8	1 1/16	1 9/16	9/16	9.17	138.5x158x1.5
40 H 075	6F/S	40	6.37	6.31	6 5/8	3 1/8	1 1/16	1 9/16	9/16	10.09	148x168x1.5
42 H 075	6F/S	42	6.69	6.63	7 1/4	3 1/8	1 1/16	1 9/16	9/16	11.02	154x180x1.5
44 H 075	6AF/C	44	7.00	6.95	7 1/4	3 1/8	1 1/16	1 9/16	11/16		162x184x1.5
48 H 075	6AF/C	48	7.64	7.59	7 7/8	3 9/16	1 1/16	1 3/4	11/16		180x200x1.5
50 H 075	6A/C	50	7.96	7.90		3 9/16	1 1/16	1 3/4	11/16		

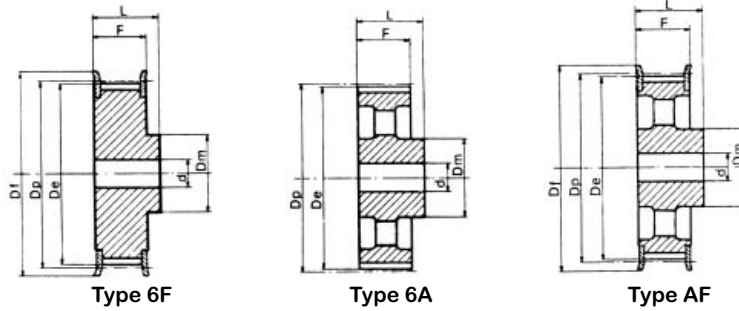
Bored to Size Pulleys  
Available in Standard ANSI  
or Metric (ISO) Bores,  
Keyways and (2) Setscrews

\*1Recommended flange size (I.D. x O.D. x Thickness); steel.  
Material: /A = Aluminum • /C = Cast Iron • /S = Steel  
Metric tolerances correspond to ISO standard H9 for bores and keyways. Inch tolerances correspond to ANSI B17.1 for bores and keyways.

\*2 Some bores smaller than listed. Some may only have a starter hole.



# American Standard (Inch Pitch) MPB Synchronous Belt Pulleys



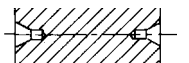
Bored to Size Pulleys  
Available in Standard ANSI  
or Metric (ISO) Bores,  
Keyways and (2) Setscrews

## H 100 Pitch 1/2" (12.7 mm)

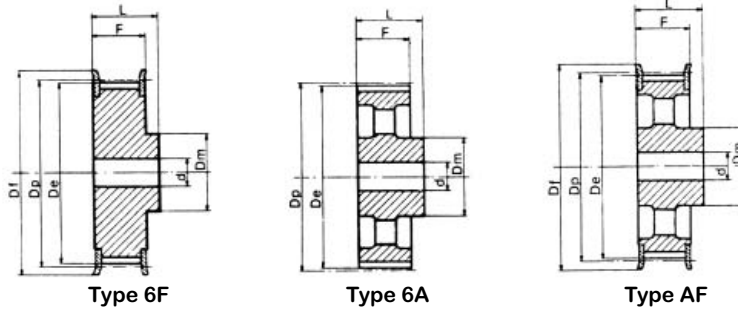
Part No.	Type/ Mat.	Teeth	Dp	De	Approx. Df	Approx. Dm	Approx. F	Approx. L	Bore*2 ±1/16"	Weight lbs	Flange Size*1 mm
14 H 100	6F/S	14	2.23	2.17	2 1/2	1 9/16	1 1/4	1 3/4	1/2	1.43	47x64x1.5
15 H 100	6F/S	15	2.39	2.33	2 5/8	1 3/4	1 1/4	1 3/4	1/2	1.70	53x66.5x1.5
16 H 100	6F/S	16	2.55	2.49	2 13/16	1 3/4	1 1/4	1 3/4	1/2	1.92	53x70x1.5
17 H 100	6F/S	17	2.71	2.65	2 15/16	1 3/4	1 1/4	1 3/4	1/2	2.14	57x75x1.5
18 H 100	6F/S	18	2.86	2.81	3 1/8	2 3/16	1 1/4	1 3/4	1/2	2.56	60x79x1.5
19 H 100	6F/S	19	3.02	2.97	3 1/4	2 3/8	1 1/4	1 3/4	9/16	2.87	64x82.5x1.5
20 H 100	6F/S	20	3.18	3.13	3 7/16	2 7/16	1 1/4	1 3/4	9/16	3.17	72x87x1.5
21 H 100	6F/S	21	3.34	3.29	3 9/16	2 9/16	1 1/4	1 3/4	9/16	3.53	73x91x1.5
22 H 100	6F/S	22	3.50	3.45	3 11/16	2 11/16	1 1/4	1 3/4	9/16	3.88	76x94x1.5
23 H 100	6F/S	23	3.66	3.61	3 13/16	2 13/16	1 1/4	1 3/4	9/16	4.28	79x97x1.5
24 H 100	6F/S	24	3.82	3.77	4 1/16	2 13/16	1 1/4	1 3/4	9/16	4.61	82.5x102x1.5
25 H 100	6F/S	25	3.98	3.92	4 3/16	2 13/16	1 1/4	1 3/4	9/16	4.94	86x106x1.5
26 H 100	6F/S	26	4.14	4.08	4 3/8	3 1/8	1 1/4	1 3/4	9/16	5.49	91x112x1.5
27 H 100	6F/S	27	4.30	4.24	4 1/2	3 1/8	1 1/4	1 3/4	9/16	5.86	94x115x1.5
28 H 100	6F/S	28	4.46	4.40	4 11/16	3 1/8	1 1/4	1 3/4	9/16	6.24	99.5x120x1.5
29 H 100	6F/S	29	4.62	4.56	4 13/16	3 1/8	1 1/4	1 3/4	9/16	6.63	99.5x120x1.5
30 H 100	6F/S	30	4.78	4.72	5	3 1/8	1 1/4	1 3/4	9/16	7.03	107x128x1.5
32 H 100	6F/S	32	5.09	5.04	5 5/16	3 1/8	1 1/4	1 3/4	9/16	7.87	115x135x1.5
33 H 100	6F/S	33	5.25	5.20	5 1/2	3 1/8	1 1/4	1 3/4	9/16	8.35	120x142x1.5
34 H 100	6F/S	34	5.41	5.36	5 5/8	3 1/8	1 1/4	1 3/4	9/16	8.79	120x142x1.5
35 H 100	6F/S	35	5.57	5.52	5 13/16	3 1/8	1 1/4	1 3/4	9/16	9.26	130x150x1.5
36 H 100	6F/S	36	5.73	5.68	6	3 1/8	1 1/4	1 3/4	9/16	9.79	130x150x1.5
38 H 100	6F/S	38	6.05	5.99	6 1/4	3 1/8	1 1/4	1 3/4	9/16	10.80	138.5x158x1.5
40 H 100	6F/S	40	6.37	6.31	6 5/8	3 1/8	1 1/4	1 3/4	9/16	11.88	148x168x1.5
42 H 100	6F/S	42	6.69	6.63	7 1/4	3 1/8	1 1/4	1 3/4	9/16	13.18	154x180x1.5
44 H 100	6AF/C	44	7.00	6.95	7 1/4	3 1/8	1 1/4	1 15/16	11/16		162x184x1.5
45 H 100	6AF/C	45	7.16	7.11	7 9/16	3 1/8	1 1/4	1 15/16	11/16		165x192x1.5
48 H 100	6AF/C	48	7.64	7.59	7 7/8	3 9/16	1 1/4	1 15/16	11/16		180x200x1.5
50 H 100	6A/C	50	7.96	7.90		3 9/16	1 1/4	1 15/16	13/16		
52 H 100	6A/C	52	8.28	8.22		3 9/16	1 1/4	1 15/16	13/16		
58 H 100	6A/C	58	9.23	9.18		3 9/16	1 1/4	1 15/16	13/16		
60 H 100	6A/C	60	9.55	9.50		4 3/4	1 1/4	1 15/16	13/16		
70 H 100	6A/C	70	11.14	11.09		4 3/4	1 1/4	2 3/16	13/16		
72 H 100	6A/C	72	11.46	11.41		4 3/4	1 1/4	2 3/16	13/16		
84 H 100	6A/C	84	13.37	13.31		4 3/4	1 1/4	2 3/16	13/16		
96 H 100	6A/C	96	15.28	15.22		4 3/4	1 1/4	2 3/8	13/16		
120 H 100	6A/C	120	19.10	19.04		4 3/4	1 1/4	2 3/8	13/16		
150 H 100	6A/C	150	23.87	23.82		4 3/4	1 1/4	2 3/8	13/16		

\*1 Recommended flange size (I.D. x O.D. x Thickness); steel.  
Material: /A = Aluminum • /C = Cast Iron • /S = Steel  
Metric tolerances correspond to ISO standard H9 for bores and keyways. Inch tolerances correspond to ANSI B17.1 for bores and keyways.

\*2 Some bores smaller than listed. Some may only have a starter hole.



# American Standard (Inch Pitch) MPB Synchronous Belt Pulleys



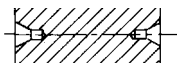
Bored to Size Pulleys Available in Standard ANSI or Metric (ISO) Bores, Keyways and (2) Setscrews

## H 150 Pitch 1/2" (12.7 mm)

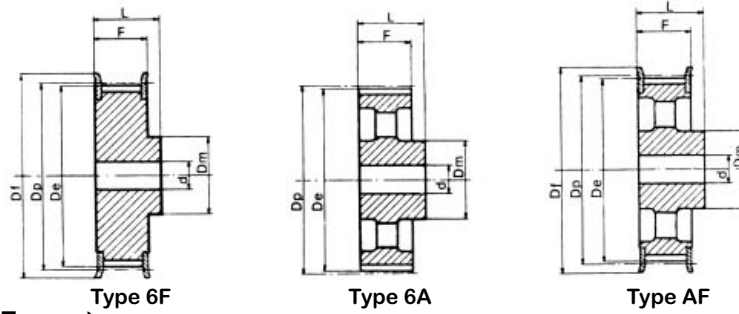
Part No.	Type/Mat.	Teeth	Dp	De	Approx. Df	Approx. Dm	Approx. F	Approx. L	Bore*2 ±1/16"	Weight lbs	Flange Size*1 mm
14 H 150	6F/S	14	2.23	2.17	2 1/2	1 9/16	1 13/16	2 5/16	13/16	1.79	47x64x1.5
15 H 150	6F/S	15	2.39	2.33	2 5/8	1 3/4	1 13/16	2 5/16	13/16	2.14	53x66.5x1.5
16 H 150	6F/S	16	2.55	2.49	2 13/16	1 3/4	1 13/16	2 5/16	13/16	2.45	53x70x1.5
17 H 150	6F/S	17	2.71	2.65	2 15/16	1 3/4	1 13/16	2 5/16	13/16	2.76	57x75x1.5
18 H 150	6F/S	18	2.86	2.81	3 1/8	2 3/16	1 13/16	2 5/16	13/16	3.26	60x79x1.5
19 H 150	6F/S	19	3.02	2.97	3 1/4	2 3/8	1 13/16	2 5/16	13/16	3.70	64x82.5x1.5
20 H 150	6F/S	20	3.18	3.13	3 7/16	2 7/16	1 13/16	2 5/16	13/16	4.14	72x87x1.5
21 H 150	6F/S	21	3.34	3.29	3 9/16	2 9/16	1 13/16	2 5/16	13/16	4.58	73x91x1.5
22 H 150	6F/S	22	3.50	3.45	3 11/16	2 11/16	1 13/16	2 5/16	13/16	5.07	76x94x1.5
23 H 150	6F/S	23	3.66	3.61	3 13/16	2 13/16	1 13/16	2 5/16	13/16	5.60	79x97x1.5
24 H 150	6F/S	24	3.82	3.77	4 1/16	2 13/16	1 13/16	2 5/16	13/16	6.06	82.5x102x1.5
25 H 150	6F/S	25	3.98	3.92	4 3/16	2 13/16	1 13/16	2 5/16	13/16	6.55	86x106x1.5
26 H 150	6F/S	26	4.14	4.08	4 3/8	3 1/8	1 13/16	2 5/16	13/16	7.25	91x112x1.5
27 H 150	6F/S	27	4.30	4.24	4 1/2	3 1/8	1 13/16	2 5/16	13/16	7.76	94x115x1.5
28 H 150	6F/S	28	4.46	4.40	4 11/16	3 1/8	1 13/16	2 5/16	13/16	8.33	99.5x120x1.5
29 H 150	6F/S	29	4.62	4.56	4 13/16	3 1/8	1 13/16	2 5/16	13/16	8.88	99.5x120x1.5
30 H 150	6F/S	30	4.78	4.72	5	3 1/8	1 13/16	2 5/16	13/16	9.46	107x128x1.5
32 H 150	6F/S	32	5.09	5.04	5 5/16	3 1/8	1 13/16	2 5/16	13/16	10.71	115x135x1.5
33 H 150	6F/S	33	5.25	5.20	5 1/2	3 1/8	1 13/16	2 5/16	13/16	11.35	120x142x1.5
34 H 150	6F/S	34	5.41	5.36	5 5/8	3 1/8	1 13/16	2 5/16	13/16	12.03	120x142x1.5
35 H 150	6F/S	35	5.57	5.52	5 13/16	3 1/8	1 13/16	2 5/16	13/16	12.74	130x150x1.5
36 H 150	6F/S	36	5.73	5.68	6	3 1/8	1 13/16	2 5/16	13/16	13.42	130x150x1.5
38 H 150	6F/S	38	6.05	5.99	6 1/4	3 1/8	1 13/16	2 5/16	13/16	14.85	138.5x158x1.5
40 H 150	6F/S	40	6.37	6.31	6 5/8	3 1/8	1 13/16	2 5/16	13/16	16.44	148x168x1.5
42 H 150	6F/S	42	6.68	6.63	7 1/4	3 1/8	1 13/16	2 5/16	13/16	18.03	154x180x1.5
44 H 150	6AF/C	44	7.00	6.95	7 1/4	3 1/8	1 13/16	2 5/16	13/16		162x184x1.5
45 H 150	6AF/C	45	7.16	7.11	7 9/16	3 1/8	1 13/16	2 5/16	13/16		165x192x1.5
48 H 150	6AF/C	48	7.64	7.59	7 7/8	3 9/16	1 13/16	2 9/16	13/16		180x200x1.5
50 H 150	6A/C	50	7.96	7.90		3 9/16	1 13/16	2 9/16	13/16		
52 H 150	6A/C	52	8.28	8.22		3 9/16	1 13/16	2 9/16	13/16		
58 H 150	6A/C	58	9.23	9.18		3 9/16	1 13/16	2 9/16	13/16		
60 H 150	6A/C	60	9.55	9.50		3 15/16	1 13/16	2 9/16	13/16		
70 H 150	6A/C	70	11.14	11.09		3 15/16	1 13/16	2 9/16	1		
72 H 150	6A/C	72	11.46	11.41		4 3/4	1 13/16	2 9/16	1		
84 H 150	6A/C	84	13.37	13.31		4 3/4	1 13/16	2 9/16	1		
96 H 150	6A/C	96	15.28	15.22		4 3/4	1 13/16	2 9/16	1		
120 H 150	6A/C	120	19.10	19.04		4 3/4	1 13/16	2 9/16	1		
150 H 150	6A/C	150	23.87	23.82		4 3/4	1 13/16	2 9/16	1		

\*1 Recommended flange size (I.D. x O.D. x Thickness); steel.  
 Material: /A = Aluminum • /C = Cast Iron • /S = Steel  
 Metric tolerances correspond to ISO standard H9 for bores and keyways. Inch tolerances correspond to ANSI B17.1 for bores and keyways.

\*2 Some bores smaller than listed. Some may only have a starter hole.



# American Standard (Inch Pitch) MPB Synchronous Belt Pulleys



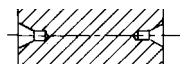
Bored to Size Pulleys  
Available in Standard ANSI  
or Metric (ISO) Bores,  
Keyways and (2) Setscrews

H 200 Pitch 1/2" (12.7 mm)

Part No.	Type/ Mat.	Teeth	Dp	De	Approx. Df	Approx. Dm	Approx. F	Approx. L	Bore*2 ±1/16"	Weight lbs	Flange Size*1 mm
14 H 200	6F/S	14	2.23	2.17	2 1/2	1 9/16	2 5/16	2 3/4	13/16	2.43	47x64x1.5
15 H 200	6F/S	15	2.39	2.33	2 5/8	1 3/4	2 5/16	2 3/4	13/16	2.93	53x66.5x1.5
16 H 200	6F/S	16	2.55	2.49	2 13/16	1 3/4	2 5/16	2 3/4	13/16	3.39	53x70x1.5
17 H 200	6F/S	17	2.71	2.65	2 15/16	1 3/4	2 5/16	2 3/4	13/16	3.72	57x75x1.5
18 H 200	6F/S	18	2.86	2.81	3 1/8	2 3/16	2 5/16	2 3/4	13/16	4.30	60x79x1.5
19 H 200	6F/S	19	3.02	2.97	3 1/4	2 3/8	2 5/16	2 3/4	13/16	4.85	64x82.5x1.5
20 H 200	6F/S	20	3.18	3.13	3 7/16	2 7/16	2 5/16	2 3/4	13/16	5.38	72x87x1.5
21 H 200	6F/S	21	3.34	3.29	3 9/16	2 9/16	2 5/16	2 3/4	13/16	5.95	73x91x1.5
22 H 200	6F/S	22	3.50	3.45	3 11/16	2 11/16	2 5/16	2 3/4	13/16	6.55	76x94x1.5
23 H 200	6F/S	23	3.66	3.61	3 13/16	2 13/16	2 5/16	2 3/4	13/16	7.16	79x97x1.5
24 H 200	6F/S	24	3.82	3.77	4 1/16	2 13/16	2 5/16	2 3/4	13/16	7.85	82.5x102x1.5
25 H 200	6F/S	25	3.98	3.92	4 3/16	2 13/16	2 5/16	2 3/4	13/16	8.40	86x106x1.5
26 H 200	6F/S	26	4.14	4.08	4 3/8	3 1/8	2 5/16	2 3/4	13/16	9.21	91x112x1.5
27 H 200	6F/S	27	4.30	4.24	4 1/2	3 1/8	2 5/16	2 3/4	13/16	9.90	94x115x1.5
28 H 200	6F/S	28	4.46	4.40	4 11/16	3 1/8	2 5/16	2 3/4	13/16	10.60	99.5x120x1.5
29 H 200	6F/S	29	4.62	4.56	4 13/16	3 1/8	2 5/16	2 3/4	13/16	11.33	99.5x120x1.5
30 H 200	6F/S	30	4.78	4.72	5	3 1/8	2 5/16	2 3/4	13/16	12.06	107x128x1.5
32 H 200	6F/S	32	5.09	5.04	5 5/16	3 1/8	2 5/16	2 3/4	13/16	13.60	115x135x1.5
33 H 200	6F/S	33	5.25	5.20	5 1/2	3 1/8	2 5/16	2 3/4	13/16	14.46	120x142x1.5
34 H 200	6F/S	34	5.41	5.36	5 5/8	3 1/8	2 5/16	2 3/4	13/16	15.30	120x142x1.5
35 H 200	6F/S	35	5.57	5.52	5 13/16	3 1/8	2 5/16	2 3/4	13/16	16.18	130x150x1.5
36 H 200	6F/S	36	5.73	5.68	6	3 1/8	2 5/16	2 3/4	13/16	17.08	130x150x1.5
38 H 200	6F/S	38	6.05	5.99	6 1/4	3 1/8	2 5/16	2 3/4	13/16	19.00	138.5x158x1.5
40 H 200	6F/S	40	6.37	6.31	6 5/8	3 1/8	2 5/16	2 3/4	13/16	20.94	148x168x1.5
42 H 200	6F/S	42	6.68	6.63	7 1/4	3 1/8	2 5/16	2 3/4	13/16	22.88	154x180x1.5
44 H 200	6AF/C	44	7.00	6.95	7 1/4	3 1/8	2 5/16	2 3/4	13/16		162x184x1.5
45 H 200	6AF/C	45	7.16	7.11	7 9/16	3 1/8	2 5/16	2 3/4	13/16		165x192x1.5
48 H 200	6AF/C	48	7.64	7.59	7 7/8	3 9/16	2 5/16	2 15/16	1		180x200x1.5
50 H 200	6A/C	50	7.96	7.90		3 9/16	2 5/16	2 15/16	1		
52 H 200	6A/C	52	8.28	8.22		3 9/16	2 5/16	2 15/16	1		
58 H 200	6A/C	58	9.23	9.18		3 9/16	2 5/16	2 15/16	1		
60 H 200	6A/C	60	9.55	9.50		3 15/16	2 5/16	2 15/16	1		
70 H 200	6A/C	70	11.14	11.09		3 15/16	2 5/16	2 15/16	1 1/8		
72 H 200	6A/C	72	11.46	11.41		4 3/4	2 5/16	2 15/16	1 1/8		
84 H 200	6A/C	84	13.37	13.31		4 3/4	2 5/16	2 15/16	1 1/8		
96 H 200	6A/C	96	15.28	15.22		4 3/4	2 5/16	2 15/16	1 1/8		
120 H 200	6A/C	120	19.10	19.04		4 3/4	2 5/16	2 15/16	1 1/8		
150 H 200	6A/C	150	23.87	23.82		4 3/4	2 5/16	2 15/16	1 1/8		

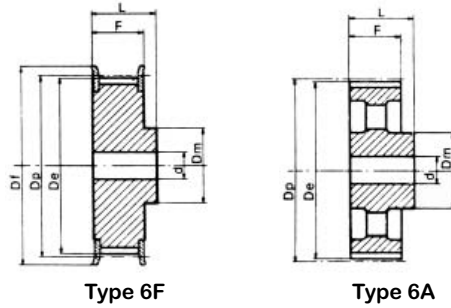
\*1 Recommended flange size (I.D. x O.D. x Thickness); steel.  
Material: /A = Aluminum • /C = Cast Iron • /S = Steel  
Metric tolerances correspond to ISO standard H9 for bores and keyways. Inch tolerances correspond to ANSI B17.1 for bores and keyways.

\*2 Some bores smaller than listed. Some may only have a starter hole.





# American Standard (Inch Pitch) MPB Synchronous Belt Pulleys



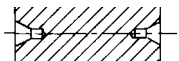
Bored to Size Pulleys  
Available in Standard ANSI  
or Metric (ISO) Bores,  
Keyways and (2) Setscrews

## H 300 Pitch 1/2" (12.7 mm)

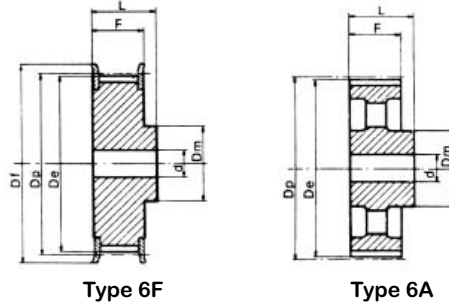
Part No.	Type/ Mat.	Teeth	Dp	De	Approx. Df	Approx. Dm	Approx. F	Approx. L	Bore*2 ±1/16"	Weight lbs	Flange Size*1 mm
14 H 300	6F/S	14	2.23	2.17	2 1/2	1 9/16	3 3/8	3 15/16	13/16	3.61	47x64x1.5
15 H 300	6F/S	15	2.39	2.33	2 5/8	1 3/4	3 3/8	3 15/16	13/16	4.21	53x66.5x1.5
16 H 300	6F/S	16	2.55	2.49	2 13/16	1 3/4	3 3/8	3 15/16	13/16	4.76	53x70x1.5
17 H 300	6F/S	17	2.71	2.65	2 15/16	1 3/4	3 3/8	3 15/16	13/16	5.36	57x75x1.5
18 H 300	6F/S	18	2.86	2.81	3 1/8	2 3/16	3 3/8	3 15/16	13/16	6.17	60x79x1.5
19 H 300	6F/S	19	3.02	2.97	3 1/4	2 3/8	3 3/8	3 15/16	13/16	6.96	64x82.5x1.5
20 H 300	6F/S	20	3.18	3.13	3 7/16	2 7/16	3 3/8	3 15/16	13/16	7.71	72x87x1.5
21 H 300	6F/S	21	3.34	3.29	3 9/16	2 9/16	3 3/8	3 15/16	13/16	8.53	73x91x1.5
22 H 300	6F/S	22	3.50	3.45	3 11/16	2 11/16	3 3/8	3 15/16	13/16	9.39	76x94x1.5
23 H 300	6F/S	23	3.66	3.61	3 13/16	2 13/16	3 3/8	3 15/16	13/16	10.31	79x97x1.5
24 H 300	6F/S	24	3.82	3.77	4 1/16	2 13/16	3 3/8	3 15/16	13/16	11.20	82.5x102x1.5
25 H 300	6F/S	25	3.98	3.92	4 3/16	2 13/16	3 3/8	3 15/16	13/16	12.01	86x106x1.5
26 H 300	6F/S	26	4.14	4.08	4 3/8	3 1/8	3 3/8	3 15/16	13/16	13.25	91x112x1.5
27 H 300	6F/S	27	4.30	4.24	4 1/2	3 1/8	3 3/8	3 15/16	13/16	14.22	94x115x1.5
28 H 300	6F/S	28	4.46	4.40	4 11/16	3 1/8	3 3/8	3 15/16	13/16	15.23	99.5x120x1.5
30 H 300	6F/S	30	4.78	4.72	5	3 1/8	3 3/8	3 15/16	13/16	17.41	107x128x1.5
32 H 300	6F/S	32	5.09	5.04	5 5/16	3 1/8	3 3/8	3 15/16	13/16	19.66	115x135x1.5
33 H 300	6F/S	33	5.25	5.20	5 1/2	3 1/8	3 3/8	3 15/16	13/16	20.85	120x142x1.5
34 H 300	6F/S	34	5.41	5.36	5 5/8	3 1/8	3 3/8	3 15/16	13/16	22.13	120x142x1.5
35 H 300	6F/S	35	5.57	5.52	5 13/16	3 1/8	3 3/8	3 15/16	1	23.41	130x150x1.5
36 H 300	6F/S	36	5.73	5.68	6	3 1/8	3 3/8	3 15/16	1	24.77	130x150x1.5
38 H 300	6F/S	38	6.05	5.99	6 1/4	3 1/8	3 3/8	3 15/16	1	27.42	138.5x158x1.5
40 H 300	6F/S	40	6.37	6.31	6 5/8	3 1/8	3 3/8	3 15/16	1	30.42	148x168x1.5
42 H 300	6F/S	42	6.68	6.63	7 1/16	3 1/8	3 3/8	3 15/16	1		154x180x1.5
44 H 300	6A/C	44	7.00	6.95		3 1/8	3 3/8	3 15/16	1		
45 H 300	6A/C	45	7.16	7.11		3 9/16	3 3/8	3 15/16	1		
48 H 300	6A/C	48	7.64	7.59		3 9/16	3 3/8	3 15/16	1		
50 H 300	6A/C	50	7.96	7.90		3 9/16	3 3/8	3 15/16	1		
52 H 300	6A/C	52	8.28	8.22		3 9/16	3 3/8	3 15/16	1		
58 H 300	6A/C	58	9.23	9.18		3 9/16	3 3/8	3 15/16	1		
60 H 300	6A/C	60	9.55	9.50		3 15/16	3 3/8	3 15/16	1		
70 H 300	6A/C	70	11.14	11.09		4 3/4	3 3/8	3 15/16	1 3/16		
72 H 300	6A/C	72	11.46	11.41		4 3/4	3 3/8	3 15/16	1 3/16		
84 H 300	6A/C	84	13.37	13.31		4 3/4	3 3/8	3 15/16	1 3/16		
96 H 300	6A/C	96	15.28	15.22		4 3/4	3 3/8	3 15/16	1 3/16		
120 H 300	6A/C	120	19.10	19.04		4 3/4	3 3/8	3 15/16	1 3/16		
150 H 300	6A/C	150	23.87	23.82		4 3/4	3 3/8	3 15/16	1 3/16		
156 H 300	6A/C	156	24.83	24.77		4 3/4	3 3/8	3 15/16	1 3/16		

\*1 Recommended flange size (I.D. x O.D. x Thickness); steel.  
Material: /A = Aluminum • /C = Cast Iron • /S = Steel  
Metric tolerances correspond to ISO standard H9 for bores and keyways. Inch tolerances correspond to ANSI B17.1 for bores and keyways.

\*2 Some bores smaller than listed. Some may only have a starter hole.



# American Standard (Inch Pitch) MPB Synchronous Belt Pulleys



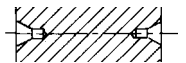
## XH 200 Pitch 7/8" (22.22 mm)

Part No.	Type/ Mat.	Teeth	Dp	De	Approx. Df	Approx. Dm	Approx. F	Approx. L	Bore*2 ±1/16"	Weight lbs	Flange Size*1 mm
18 XH 200	6F/S	18	5.01	4.90	5 7/16	3 15/16	2 9/16	3 1/8	1	13.22	107x140x2.5
19 XH 200	6F/S	19	5.29	5.18	5 3/4	3 15/16	2 9/16	3 1/8	1	14.55	107x146x2.5
20 XH 200	6F/S	20	5.57	5.46	6 1/16	3 15/16	2 9/16	3 1/8	1	16.09	107x155x2.5
21 XH 200	6F/S	21	5.85	5.74	6 5/16	4 5/16	2 9/16	3 1/8	1	17.63	120x160x2.5
22 XH 200	6F/S	22	6.13	6.02	6 5/8	4 5/16	2 9/16	3 1/8	1	19.40	120x170x2.5
24 XH 200	6F/S	24	6.68	6.57	7 3/16	4 3/4	2 9/16	3 1/8	1	23.36	135x184x2.5
25 XH 200	6F/S	25	6.96	6.85	7 3/8	4 3/4	2 9/16	3 1/8	1	25.35	150x188x2.5
26 XH 200	6F/S	26	7.24	7.13	7 13/16	4 3/4	2 9/16	3 1/8	1	27.11	150x198x2.5
27 XH 200	6F/S	27	7.52	7.41	7 7/8	4 3/4	2 9/16	3 1/8	1	29.97	160x205x2.5
28 XH 200	6F/S	28	7.80	7.69	8 5/16	4 3/4	2 9/16	3 1/8	1	31.96	162x212x2.5
30 XH 200	6F/S	30	8.36	8.25	8 7/8	4 3/4	2 9/16	3 1/8	1	35.70	176x227x2.5
32 XH 200	6F/S	32	8.91	8.80	9 7/16	4 3/4	2 9/16	3 1/8	1	39.23	192x240x2.5
34 XH 200	6F/S	34	9.47	9.36	10 1/16	4 3/4	2 9/16	3 1/8	1	41.66	220x256x2.5
38 XH 200	6A/C	38	10.58	10.47		5 7/8	2 9/16	3 15/16	1 1/8		
40 XH 200	6A/C	40	11.14	11.03		5 7/8	2 9/16	3 15/16	1 1/8		
46 XH 200	6A/C	46	12.81	12.70		5 7/8	2 9/16	3 15/16	1 1/8		
48 XH 200	6A/C	48	13.37	13.26		5 7/8	2 9/16	3 15/16	1 1/8		
58 XH 200	6A/C	58	16.15	16.04		5 7/8	2 9/16	3 15/16	1 1/8		
60 XH 200	6A/C	60	16.71	16.60		5 7/8	2 9/16	3 15/16	1 1/8		
70 XH 200	6A/C	70	19.50	19.39		5 7/8	2 9/16	3 15/16	1 1/8		
72 XH 200	6A/C	72	20.05	19.94		6 5/16	2 9/16	3 15/16	1 3/16		
78 XH 200	6A/C	78	21.72	21.61		6 5/16	2 9/16	3 15/16	1 3/16		
80 XH 200	6A/C	80	22.28	22.17		6 5/16	2 9/16	3 15/16	1 3/16		
82 XH 200	6A/C	82	22.86	22.73		6 5/16	2 9/16	3 15/16	1 3/16		
84 XH 200	6A/C	84	23.40	23.29		6 5/16	2 9/16	3 15/16	1 3/16		
94 XH 200	6A/C	94	26.18	26.07		6 5/16	2 9/16	3 15/16	1 3/16		
96 XH 200	6A/C	96	26.74	26.63		6 5/16	2 9/16	3 15/16	1 3/16		
118 XH 200	6A/C	118	32.87	32.76		6 5/16	2 9/16	3 15/16	1 3/16		
120 XH 200	6A/C	120	33.42	33.31		6 5/16	2 9/16	3 15/16	1 3/16		

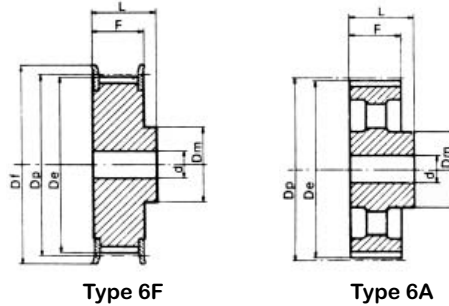
Bored to Size Pulleys  
Available in Standard ANSI  
or Metric (ISO) Bores,  
Keyways and (2) Setscrews

\*1 Recommended flange size (I.D. x O.D. x Thickness); steel.  
Material: /A = Aluminum • /C = Cast Iron • /S = Steel  
Metric tolerances correspond to ISO standard H9 for bores and  
keyways. Inch tolerances correspond to ANSI B17.1 for bores  
and keyways.

\*2 Some bores smaller  
than listed. Some may  
only have a starter hole.



# American Standard (Inch Pitch) MPB Synchronous Belt Pulleys



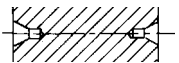
## XH 300 Pitch 7/8" (22.22 mm)

Part No.	Type/ Mat.	Teeth	Dp	De	Approx. Df	Approx. Dm	Approx. F	Approx. L	Bore*2 ±1/16"	Weight lbs	Flange Size*1 mm
18 XH 300	6F/S	18	5.01	4.90	5 7/16	3 15/16	3 5/8	4 5/16	1 1/8	19.62	107x140x2.5
19 XH 300	6F/S	19	5.29	5.18	5 3/4	3 15/16	3 5/8	4 5/16	1 1/8	20.28	107x146x2.5
20 XH 300	6F/S	20	5.57	5.46	6 1/16	3 15/16	3 5/8	4 5/16	1 1/8	20.94	107x155x2.5
21 XH 300	6F/S	21	5.85	5.74	6 5/16	4 5/16	3 5/8	4 5/16	1 1/8	23.80	120x160x2.5
22 XH 300	6F/S	22	6.13	6.02	6 5/8	4 5/16	3 5/8	4 5/16	1 1/8	27.11	120x170x2.5
24 XH 300	6F/S	24	6.68	6.57	7 3/16	4 3/4	3 5/8	4 5/16	1 1/8	31.30	135x184x2.5
25 XH 300	6F/S	25	6.96	6.85	7 3/8	4 3/4	3 5/8	4 5/16	1 1/8	34.16	150x188x2.5
26 XH 300	6F/S	26	7.24	7.13	7 13/16	4 3/4	3 5/8	4 5/16	1 1/8	36.81	150x198x2.5
27 XH 300	6F/S	27	7.52	7.41	7 7/8	4 3/4	3 5/8	4 5/16	1 1/8	40.77	160x205x2.5
28 XH 300	6F/S	28	7.80	7.69	8 5/16	4 3/4	3 5/8	4 5/16	1 1/8	44.74	162x212x2.5
30 XH 300	6F/S	30	8.36	8.25	8 7/8	4 3/4	3 5/8	4 5/16	1 1/8	52.68	176x227x2.5
32 XH 300	6F/S	32	8.91	8.80	9 7/16	4 3/4	3 5/8	4 5/16	1 1/8	58.63	192x240x2.5
34 XH 300	6F/S	34	9.47	9.36	10 1/16	4 3/4	3 5/8	4 5/16	1 1/8	69.43	220x256x2.5
38 XH 300	6A/C	38	10.58	10.47		5 7/8	3 5/8	4 3/4	1 1/4		
40 XH 300	6A/C	40	11.14	11.03		5 7/8	3 5/8	4 3/4	1 1/4		
46 XH 300	6A/C	46	12.81	12.70		6 7/8	3 5/8	4 3/4	1 1/4		
48 XH 300	6A/C	48	13.37	13.26		6 7/8	3 5/8	4 3/4	1 1/4		
58 XH 300	6A/C	58	16.15	16.04		6 7/8	3 5/8	4 3/4	1 1/4		
60 XH 300	6A/C	60	16.71	16.60		6 7/8	3 5/8	4 3/4	1 1/4		
70 XH 300	6A/C	70	19.50	19.39		6 7/8	3 5/8	4 3/4	1 1/4		
72 XH 300	6A/C	72	20.05	19.94		6 7/8	3 5/8	4 3/4	1 1/4		
78 XH 300	6A/C	78	21.72	21.61		6 7/8	3 5/8	4 3/4	1 1/4		
80 XH 300	6A/C	80	22.28	22.17		6 7/8	3 5/8	4 3/4	1 1/4		
82 XH 300	6A/C	82	22.86	22.73		6 7/8	3 5/8	4 3/4	1 1/4		
84 XH 300	6A/C	84	23.40	23.29		6 7/8	3 5/8	4 3/4	1 1/4		
94 XH 300	6A/C	94	26.18	26.07		6 7/8	3 5/8	4 3/4	1 1/4		
96 XH 300	6A/C	96	26.74	26.63		6 7/8	3 5/8	4 3/4	1 1/4		
118 XH 300	6A/C	118	32.87	32.76		6 7/8	3 5/8	4 3/4	1 1/4		
120 XH 300	6A/C	120	33.42	33.31		6 7/8	3 5/8	4 3/4	1 1/4		

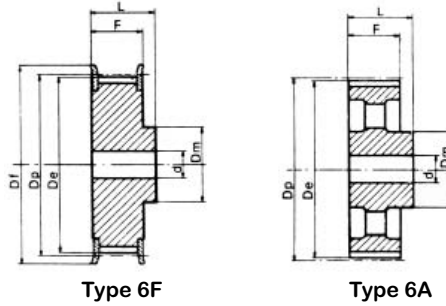
Bored to Size Pulleys  
Available in Standard ANSI  
or Metric (ISO) Bores,  
Keyways and (2) Setscrews

\*1Recommended flange size (I.D. x O.D. x Thickness); steel.  
Material: /A = Aluminum • /C = Cast Iron • /S = Steel  
Metric tolerances correspond to ISO standard H9 for bores and keyways. Inch tolerances correspond to ANSI B17.1 for bores and keyways.

\*2 Some bores smaller than listed. Some may only have a starter hole.



# American Standard (Inch Pitch) MPB Synchronous Belt Pulleys



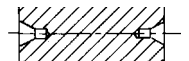
## XH 400 Pitch 7/8" (22.22 mm)

Part No.	Type/ Mat.	Teeth	Dp	De	Approx. Df	Approx. Dm	Approx. F	Approx. L	Bore*2 ±1/16"	Weight lbs	Flange Size*1 mm
18 XH 400	6F/S	18	5.01	4.90	5 7/16	3 15/16	4 11/16	5 3/16	1 1/4	21.16	107x140x2.5
19 XH 400	6F/S	19	5.29	5.18	5 3/4	3 15/16	4 11/16	5 3/16	1 1/4	23.80	107x146x2.5
20 XH 400	6F/S	20	5.57	5.46	6 1/16	3 15/16	4 11/16	5 3/16	1 1/4	26.45	107x155x2.5
21 XH 400	6F/S	21	5.85	5.74	6 5/16	4 5/16	4 11/16	5 3/16	1 1/4	29.31	120x160x2.5
22 XH 400	6F/S	22	6.13	6.02	6 5/8	4 5/16	4 11/16	5 3/16	1 1/4	32.84	120x170x2.5
24 XH 400	6F/S	24	6.68	6.57	7 3/16	4 3/4	4 11/16	5 3/16	1 1/4	39.45	135x184x2.5
25 XH 400	6F/S	25	6.96	6.85	7 3/8	4 3/4	4 11/16	5 3/16	1 1/4	43.20	150x188x2.5
26 XH 400	6F/S	26	7.24	7.13	7 13/16	4 3/4	4 11/16	5 3/16	1 1/4	46.72	150x198x2.5
27 XH 400	6F/S	27	7.52	7.41	7 7/8	4 3/4	4 11/16	5 3/16	1 1/4	50.25	160x205x2.5
28 XH 400	6F/S	28	7.80	7.69	8 5/16	5 7/8	4 11/16	5 3/16	1 1/4	54.44	162x212x2.5
30 XH 400	6F/S	30	8.36	8.25	8 7/8	5 7/8	4 11/16	5 3/16	1 1/4	63.48	176x227x2.5
32 XH 400	6F/S	32	8.91	8.80	9 7/16	5 7/8	4 11/16	5 3/16	1 1/4	72.07	192x240x2.5
34 XH 400	6F/S	34	9.47	9.36	10 1/16	5 7/8	4 11/16	5 3/16	1 1/4	80.89	220x256x2.5
38 XH 400	6A/C	38	10.58	10.47		5 7/8	4 11/16	5 3/16	1 1/4		
40 XH 400	6A/C	40	11.14	11.03		5 7/8	4 11/16	5 3/16	1 1/4		
46 XH 400	6A/C	46	12.81	12.70		6 7/8	4 11/16	5 3/16	1 1/4		
48 XH 400	6A/C	48	13.37	13.26		6 7/8	4 11/16	5 3/16	1 1/4		
58 XH 400	6A/C	58	16.15	16.04		6 7/8	4 11/16	5 3/16	1 1/4		
60 XH 400	6A/C	60	16.71	16.60		6 7/8	4 11/16	5 3/16	1 1/4		
70 XH 400	6A/C	70	19.10	19.39		6 7/8	4 11/16	5 3/16	1 1/4		
72 XH 400	6A/C	72	20.05	19.94		6 7/8	4 11/16	5 3/16	1 1/4		
78 XH 400	6A/C	78	21.72	21.61		6 7/8	4 11/16	5 3/16	1 1/4		
80 XH 400	6A/C	80	22.28	22.17		6 7/8	4 11/16	5 3/16	1 1/4		
82 XH 400	6A/C	82	22.84	22.73		6 7/8	4 11/16	5 3/16	1 1/4		
84 XH 400	6A/C	84	23.40	23.29		6 7/8	4 11/16	5 3/16	1 1/4		
94 XH 400	6A/C	94	26.18	33.94		6 7/8	4 11/16	5 3/16	1 1/4		
96 XH 400	6A/C	96	26.74	26.63		6 7/8	4 11/16	5 3/16	1 1/4		
118 XH 400	6A/C	118	32.87	32.76		6 7/8	4 11/16	5 3/16	1 1/4		
120 XH 400	6A/C	120	33.42	33.31		6 7/8	4 11/16	5 3/16	1 1/4		

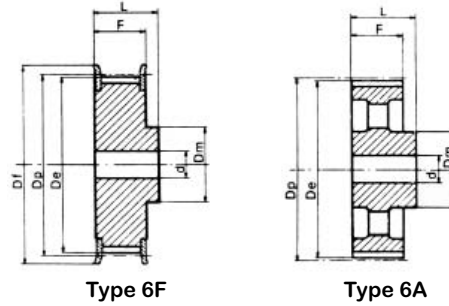
Bored to Size Pulleys  
Available in Standard ANSI  
or Metric (ISO) Bores,  
Keyways and (2) Setscrews

\*1 Recommended flange size (I.D. x O.D. x Thickness); steel.  
Material: /A = Aluminum • /C = Cast Iron • /S = Steel  
Metric tolerances correspond to ISO standard H9 for bores and  
keyways. Inch tolerances correspond to ANSI B17.1 for bores  
and keyways.

\*2 Some bores smaller  
than listed. Some may  
only have a starter hole.



# American Standard (Inch Pitch) MPB Synchronous Belt Pulleys



Bored to Size Pulleys Available in Standard ANSI or Metric (ISO) Bores, Keyways and (2) Setscrews

## XXH 200 Pitch 1-1/4" (31.75 mm)

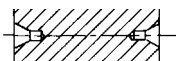
Part No.	Type/Mat.	Teeth	Dp	De	Approx. Df	Approx. Dm	Approx. F	Approx. L	Bore*2 ±1/16"	Flange Size*1 mm
18 XXH 200	6F/S	18	7.16	7.04	7 13/16	5 1/2	2 1/2	3 15/16	1 1/8	150x198x2.5
20 XXH 200	6F/S	20	7.96	7.84	8 3/8	5 7/8	2 1/2	3 15/16	1 1/8	162x212x2.5
22 XXH 200	6F/S	22	8.75	8.63	9 7/16	5 7/8	2 1/2	3 15/16	1 1/8	192x240x2.5
24 XXH 200	6F/S	24	9.55	9.43	10 1/2	5 7/8	2 1/2	3 15/16	1 1/8	220x267x2.5
26 XXH 200	6F/S	26	10.34	10.23	11 7/16	5 7/8	2 1/2	3 15/16	1 1/8	230x290x2.5
30 XXH 200	6A/C	30	11.94	11.82		5 7/8	2 1/2	3 15/16	1 1/8	
40 XXH 200	6A/C	40	15.92	15.80		5 7/8	2 1/2	3 15/16	1 1/8	
48 XXH 200	6A/C	48	19.10	18.98		6 7/8	2 1/2	4 3/4	1 1/4	
60 XXH 200	6A/C	60	23.87	23.75		6 7/8	2 1/2	4 3/4	1 1/4	
72 XXH 200	6A/C	72	28.65	28.53		6 7/8	2 1/2	4 3/4	1 1/2	
90 XXH 200	6A/C	90	35.81	35.69		6 7/8	2 1/2	4 3/4	1 1/2	

## XXH 300 Pitch 1-1/4" (31.75 mm)

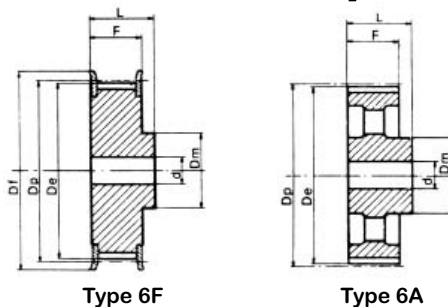
Part No.	Type/Mat.	Teeth	Dp	De	Approx. Df	Approx. Dm	Approx. F	Approx. L	Bore*2 ±1/16"	Flange Size*1 mm
18 XXH 300	6F/S	18	7.16	7.04	7 13/16	5 1/2	3 5/8	4 5/16	1 1/8	150x198x2.5
20 XXH 300	6F/S	20	7.96	7.84	8 3/8	5 7/8	3 5/8	4 5/16	1 1/8	162x212x2.5
22 XXH 300	6F/S	22	8.75	8.63	9 7/16	5 7/8	3 5/8	4 5/16	1 1/8	192x240x2.5
24 XXH 300	6F/S	24	9.55	9.43	10 1/2	5 7/8	3 5/8	4 5/16	1 1/8	220x267x2.5
26 XXH 300	6F/S	26	10.34	10.23	11 7/16	5 7/8	3 5/8	4 5/16	1 1/8	230x290x2.5
30 XXH 300	6A/C	30	11.94	11.82		5 7/8	3 5/8	4 5/16	1 1/8	
40 XXH 300	6A/C	40	15.92	15.80		5 7/8	3 5/8	4 5/16	1 1/8	
48 XXH 300	6A/C	48	19.10	18.98		6 7/8	3 5/8	4 3/4	1 1/4	
60 XXH 300	6A/C	60	23.87	23.75		6 7/8	3 5/8	4 3/4	1 1/4	
72 XXH 300	6A/C	72	28.65	28.53		6 7/8	3 5/8	4 3/4	1 1/2	
90 XXH 300	6A/C	90	35.81	35.69		6 7/8	3 5/8	4 3/4	1 1/2	

\*1Recommended flange size (I.D. x O.D. x Thickness); steel.  
Material: /A = Aluminum • /C = Cast Iron • /S = Steel  
Metric tolerances correspond to ISO standard H9 for bores and keyways. Inch tolerances correspond to ANSI B17.1 for bores and keyways.

\*2 Some bores smaller than listed. Some may only have a starter hole.



# American Standard (Inch Pitch) MPB Synchronous Belt Pulleys



Bored to Size Pulleys  
Available in Standard ANSI  
or Metric (ISO) Bores,  
Keyways and (2) Setscrews

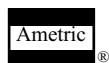
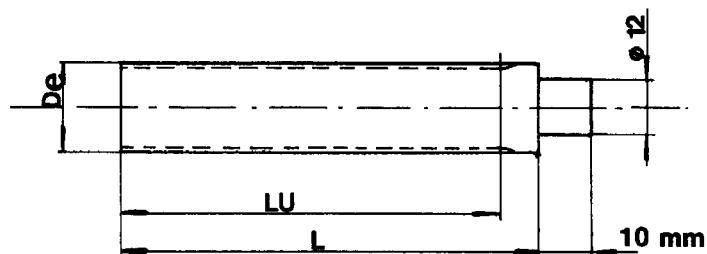
## XXH 400 Pitch 1-1/4" (31.75 mm)

Part No.	Type/ Mat.	Teeth	Dp	De	Approx. Df	Approx. Dm	Approx. F	Approx. L	Bore*2 ±1/16"	Flange Size*1 mm
18 XXH 400	6F/S	18	7.16	7.04	7 13/16	5 1/2	4 5/8	5 1/2	1 1/4	150x198x2.5
20 XXH 400	6F/S	20	7.96	7.84	8 3/8	5 7/8	4 5/8	5 1/2	1 1/4	162x212x2.5
22 XXH 400	6F/S	22	8.75	8.63	9 7/16	5 7/8	4 5/8	5 1/2	1 1/4	192x240x2.5
24 XXH 400	6F/S	24	9.55	9.43	10 1/2	5 7/8	4 5/8	5 1/2	1 1/4	220x267x2.5
26 XXH 400	6F/S	26	10.34	10.23	11 7/16	5 7/8	4 5/8	5 1/2	1 1/4	230x290x2.5
30 XXH 400	6A/C	30	11.94	11.82		7 5/16	4 5/8	5 1/2	1 1/4	
40 XXH 400	6A/C	40	15.92	15.80		7 5/16	4 5/8	5 1/2	1 1/4	
48 XXH 400	6A/C	48	19.10	18.98		7 5/16	4 5/8	5 1/2	1 1/2	
60 XXH 400	6A/C	60	23.87	23.75		7 5/16	4 5/8	5 1/2	1 1/2	
72 XXH 400	6A/C	72	28.65	28.53		8 11/16	4 5/8	5 1/2	1 1/2	
90 XXH 400	6A/C	90	35.81	35.69		8 11/16	4 5/8	5 1/2	1 1/2	

## XXH 500 Pitch 1-1/4" (31.75 mm)

Part No.	Type/ Mat.	Teeth	Dp	De	Approx. Df	Approx. Dm	Approx. F	Approx. L	Bore*2 ±1/16"	Flange Size*1 mm
18 XXH 500	6F/S	18	7.16	7.04	7 13/16	5 1/2	5 3/4	6 5/8	1 1/4	150x198x2.5
20 XXH 500	6F/S	20	7.96	7.84	8 3/8	5 7/8	5 3/4	6 5/8	1 1/4	162x212x2.5
22 XXH 500	6F/S	22	8.75	8.63	9 7/16	5 7/8	5 3/4	6 5/8	1 1/4	192x240x2.5
24 XXH 500	6F/S	24	9.55	9.43	10 1/2	5 7/8	5 3/4	6 5/8	1 1/4	220x267x2.5
26 XXH 500	6F/S	26	10.34	10.23	11 7/16	5 7/8	5 3/4	6 5/8	1 1/4	230x290x2.5
30 XXH 500	6A/C	30	11.94	11.82		8 7/16	5 3/4	6 5/8	1 1/4	
40 XXH 500	6A/C	40	15.92	15.80		8 7/16	5 3/4	6 5/8	1 1/4	
48 XXH 500	6A/C	48	19.10	18.98		8 7/16	5 3/4	6 5/8	1 1/2	
60 XXH 500	6A/C	60	23.87	23.75		9 7/16	5 3/4	6 5/8	1 1/2	
72 XXH 500	6A/C	72	28.65	28.53		9 7/16	5 3/4	6 5/8	1 1/2	
90 XXH 500	6A/C	90	35.81	35.69		9 7/16	5 3/4	6 5/8	1 1/2	

American (Imperial) Pitch Synchronous Belt Pulley Bar Stock also available



American Metric® Corporation

Group: 081

1-081 - 90914