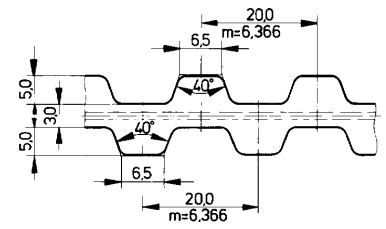


Metric Synchronous Belts

POLYURETHANE WITH STEEL CORDS*



T20 (20 mm Pitch)

T20 Belt Length	T20D Belt Length	No. Teeth
20.1260		63
20.1460		73
20.1780		89
20.1880		94
20.2360		118
20.2600	20D2600	130
20.3100		155
20.3620	20D3620	181

Standard Belt Width (mm)	6	7	8	10	11	12	14	16	20	25	32	50	60	75	100
--------------------------	---	---	---	----	----	----	----	----	----	----	----	----	----	----	-----

Ordering Example:

20.1260.6
 20----- Pitch
 1260----- Length (mm)
 6----- Width (mm)

20D2600.12
 20----- Pitch
 D----- Double Sided
 2600----- Length (mm)
 12----- Width (mm)

*Kevlar material available upon request.

Note: Very narrow belts, such as 4 mm or 6 mm, have a reduced number of steel cords and are only suitable for light loads. Special wire configurations for narrow widths are available by special quote.