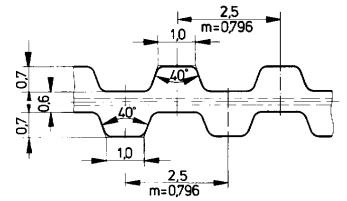


Metric Synchronous Belts

POLYURETHANE WITH STEEL CORDS*



T2.5 (2.5 mm Pitch)

T2.5 Belt Length	T2.5D Belt Length	No. Teeth
2.5/55		22
2.5/120		48
2.5/145		58
2.5/160		64
2.5/177		71
2.5/180		72
2.5/182		73
2.5/200		80
2.5/230		92
2.5/245		98
2.5/265		106
2.5/285		114
2.5/290		116
2.5/305		122
2.5/317	2.5D317	127
2.5/330		132
2.5/380		152
2.5/420		168
2.5/480	2.5D457	183
2.5/500		192
2.5/500		200
2.5/600		240
2.5/620		248
2.5/650		260
2.5/680		272
2.5/780		312
2.5/880		352
2.5/915		366
2.5/950		380
2.5/1300		520

Standard Belt Width (mm)	6	7	8	10	11	12	14	16	20	25	32	50
--------------------------	---	---	---	----	----	----	----	----	----	----	----	----

Ordering Example:

2.5D317.6
 2.5----- Pitch
 D----- Double Sided
 317----- Length (mm)
 6----- Width (mm)

2.5D317.6
 2.5----- Pitch
 D----- Double Sided
 317----- Length (mm)
 6----- Width (mm)

*Kevlar material available upon request.

Note: Very narrow belts, such as 4 mm or 6 mm, have a reduced number of steel cords and are only suitable for light loads. Special wire configurations for narrow widths are available by special quote.

